

ETL PERFORMANCE
ETL PRODUCTS, INC
HIGH PERFORMANCE INTERCOOLERS



UNLEASH MORE... POWER / EFFICIENCY / AIRFLOW

CORE KITS | HOSES | CLAMPS | PIPES | JOINERS



Located in Salem Ohio, ETL Performance Inc. is a premier manufacturer of Aluminum Intercoolers, Piping, Clamps and Silicone Hoses. Our goal is to produce superior cooling systems for high performance or stock cars and trucks. Our team strives to give you the best performance outputs for your vehicle through our extensive research and detail oriented development.



MISSION STATEMENT

Our mission statement at ETL Performance is “Our reputation is predicated on the concerted effort we put forth at ETL Performance in all facets of our company beginning with fundamental product development to punctual delivery resulting in a perpetual, positive and cordial customer experience.”

Our attention to detail is what really separates us from our competitors in the market today. We use only the finest materials in our manufacturing process to complement the innovative engineering that goes into each unit produced.

We aim to be transparent in our approach to not only boost the engine performance of your vehicle, but also the confidence in our products by our consumers.

We value customer feedback as we are continually growing into new markets and honoring different customer needs.

SHOP ONLINE



amazonPrime
ebay

PICK YOUR SHOP, WE'RE EVERYWHERE.

ETL Performance is proud to announce to our customers that we have made shopping for your favorite automotive performance parts even easier for you! We have a very large presence on ebay and Amazon and offer free 2 day shipping to Amazon Prime customers, as well as Fast-N-Free shipping on eBay orders! All orders placed on Amazon and eBay before 4pm EST will be shipped same business day from our Salem, Ohio Warehouse. Shop from your home, office, and even on your phone.



WWW.ETLPERFORMANCE.COM
SALES@ETLPERFORMANCE.COM

amazonPrime
ebay

Follow ETL Performance on Instagram,
Twitter and Facebook or visit our website
at www.etlperformance.com





999.95

CUMMINS

ETL POWER UNLOCKED!

ETL Performance has released a performance intercooler kit for the 2013+ Dodge 6.7L Cummins. This kit includes everything you need to improve airflow, substantially decrease charge-air temperatures, reduce EGTs, and support your truck at any power level. The first key component is the ETL Performance 6.7L Cummins intercooler piping kit. Our engineers have maximized airflow by eliminating restrictive bends, allowing for smooth and unimpeded airflow. The piping is constructed of mandrel-bent 3" aluminum for smooth flow and rugged durability. Also included are ETL Performance silicone boots and ETL Performance Constant-Tension T-Bolt Clamps for accurate and consistent holding force. ETL Performance Compared to normal silicone, ETL Performance silicone provides superior resistance to heat, pressure, fuel, and oil. This effectively increases the life of your boots and prevents leaks or blowouts. This package also includes the ETL Performance 6.7L Cummins

intercooler. Extremely durable cast aluminum end tanks and a bar-and-plate core provide cool, dense air to your engine, with the reliability you need.

Available in Brush Silver, Part #242008 or in Black #242008-A



THE KIT

- (1) Intercooler Core
- (2) T304SS + Brushed or Black color bend tubes
- (2) Straight Silicone Hoses
- (1) Hump Hose
- (1) CAC High-Pressure Silicone Hose
- (2) 3.00" T-Bolt Clamp
- (6) 4.00" T-Bolt Clamp
- (18) Black Nylon bolt kit



~~1,299.95~~

ETL POWER RELEASED!

ETL Performance has released a performance intercooler for the 2011+ Chevrolet/GMC 6.6L Duramax LML. High intake and exhaust gas temperatures can reduce performance and potentially cause engine damage. Protect your investment by upgrading to the ETL Performance 6.6L Duramax LML intercooler. This Duramax intercooler is precision engineered with durable cast aluminum end tanks and an efficient bar-and-plate core. This is all designed for improved airflow, lower intake temperatures, and improved EGTs. The ETL Performance Duramax intercooler will support substantial boost pressure in your stock or highly modified truck.

Available in Brush Silver, Part #242009 or in Black #242009-A



THE KIT

- (1) Intercooler core
- (3) T304SS Brushed Finished / Black Color Bend Tubes
- (4) Hump Silicone Hoses (Black color)
- (1) Reducer Silicone Hoses (Black color)
- (8) T304SS 3-1/4" T-Bolt Clamps
- (5) Nylon Rivets



WWW.ETLPERFORMANCE.COM
SALES@ETLPERFORMANCE.COM

amazonPrime **eBay**



UNIVERSAL INTERCOOLER CORE KITS

ETL Performance provides an exceptional line of Universal Intercoolers that feature aluminum bar and plate construction that is designed to deliver maximum cooling efficiency while minimizing pressure drop. The overall strength and durability of these intercoolers make them capable of handling even the most extreme, high boost, race applications. Traditional intercoolers with a tube and fin construction have a limited cooling capacity, while ETL Performance bar & plate Intercoolers deliver significantly cooler, denser air to your engine.

THE KIT

- (1) Intercooler Core
- (2) 180 Degree Aluminum Piping
- (2) 90 Degree Aluminum Piping
- (2) 45 Degree Aluminum Piping
- (2) 18" Aluminum Straight Piping
- (2) 90 Degree Silicone Hoses
- (6) Silicone Coupler Hoses
- (16) Aluminum T - Bolt Clamps



AUDI BMW

AUDI

ETL Performance features a new direct fit intercooler applicable to four different Audi Models. The Audi A4, A5, 2.0T and Q5 are among the models that provides our customers a Bolt-on application with a high-performance output.



BMW

ETL Performance features a direct fit intercooler applicable to four different BMW Vehicle Models. The BMW 1 Series, 2 Series, 3 Series and 4 Series are among the models that provides our customers a bolt-on application with a high-performance output.



ETL PERFORMANCE

- Increased Engine Torque
- Increased Engine Horsepower
- Lower Intake Temperature
- Audi Part #241009
- BMW Part #241007



WWW.ETLPERFORMANCE.COM
SALES@ETLPERFORMANCE.COM





HONDA

ETL Performance introduces a new line of Oil Coolers. ETL Oil Coolers are direct fit applicable to the 2016 Honda Civic 1.5T & CVT. 1.5T. Along with Honda, ETL offers a direct fit Oil Cooler for the Toyota GT86 Concept & BRZ.



DIRECT FIT INTERCOOLER KIT AVAILABLE

ETL Performance features a direct fit intercooler applicable to the 2016 Honda Civic 1.5T.



PERFORMANCE

- Increased Engine Torque
- Increased Engine Horsepower
- Lower Intake Temperature



2016 Honda Civic CVT



2016 Honda Civic 1.5T



Toyota GT86 Concept & BRZ



ETL Performance features and exclusive intercooler applicable to the Ford Mustang 2.30T Ecoboost.



ETL
PERFORMANCE

- Increased Engine Torque
- Increased Engine Horsepower
- Lower Intake Temperature
- Part #241008



WWW.ETLPERFORMANCE.COM
SALES@ETLPERFORMANCE.COM

[amazonPrime](#) [ebay](#)



Because Jeep enthusiasts need more power from idle to 3,000 RPM, ETL Performance designed their Jeep Exhaust to enhance low and mid range performance for climbing and towing. This Hi Temp Black Ceramic Coated Dual Extreme Rear Exhaust exits behind each rear tire to provide plenty of ground clearance both On Road and Off Road. Offered with Dual Large diameter Rolled Edge Black Ceramic Exhaust tips, a Hassle free, bolt-on installation with professional results.



- 2007-2017 Jeep JK Exhaust Kit
- Stainless Steel Construction
- Mandrel Bent Tubing
- Dyno-Proven Power
- Part # 332001



WWW.ETLPERFORMANCE.COM
SALES@ETLPERFORMANCE.COM

[amazonPrime](#) [ebay](#)



UNIVERSAL INTERCOOLER CORES

ETL Performance air-to-air intercooler cores cool the air intake temperature of your turbocharged engine. ETL bar and plate intercoolers provides cooler, denser air to your engine, reducing the odds of engine detonation and maximizes your turbo's power threshold. Not only are the ETL Bar & Plate style more efficient than traditional tube and fin styles, but the design also makes them more durable to handle extreme, high-boost applications.

| Parts No. | Inlet Diameter | Outlet Diameter | Core Thickness | Core Height | Core Width | Overall Width with End Tanks | Inlet / Outlet Neck Location | HP Rating |
|-----------|----------------|-----------------|----------------|-------------|------------|------------------------------|------------------------------|-----------|
| 241001 | 2.50" | 2.50" | 3.23"6 | .50" | 20.00" | 26.00" | Center | 350HP |
| 241002 | 2.50" | 2.50" | 3.23"9 | .00" | 24.00" | 30.00"O | ffset | 550HP |
| 241003 | 3.00" | 3.00" | 3.50" | 12.00" | 27.00" | 33.00"O | ffset | 875HP |
| 241004 | 2.50" | 2.50" | 3.50" | 12.00" | 27.00" | 33.00"O | ffset | 875HP |
| 241005 | 2.00" | 2.00" | 2.56"7 | .08" | 21.50" | 27.30"O | ffset | 875HP |
| 241006 | 3.00" | 3.00" | 3.00" | 11.70" | 23.40" | 31.00"O | ffset | 875HP |

See page 15 for a complete list of Intercooler Kits



ALUMINUM PIPES



ALUMINUM JOINERS



ALUMINUM T-JOINERS



ALUMINUM 45° TUBES



ALUMINUM 180° TUBES



ALUMINUM STRAIGHT TUBES



ALUMINUM 90° TUBES

Manufactured with T-6061 Polished Aluminum, ETL Performance offers a wide variety of aluminum piping to meet your custom needs. ETL offers 180, 90, 45 Degree Mandrel Bend, Straight Piping and Custom Bends. Aluminum T-Joiners and couplers are available as well.

See page 16 & 17 for a complete list of Aluminum Pipes



WWW.ETLPERFORMANCE.COM
SALES@ETLPERFORMANCE.COM



ETL SILICONE HOSES



STRAIGHT HOSES



REDUCER HOSES



HUMP HOSES



HIGH TEMPERATURE HOSES



4 PLY 90° HOSES



4 PLY 45° HOSES



4 PLY 90° REDUCER HOSES

ETL Silicone Hoses are manufactured with a 4 Ply, High Quality Aramid - Silicone blend designed to withstand extreme temperatures of -65 Degrees Fahrenheit to 350 Degrees Fahrenheit. Each Silicone component has been burst pressure tested to 140 PSI to ensure quality.

See page 18 & 19 for a complete list of Silicone Hoses



WORM GEAR & T-BOLT CLAMPS



ETL Worm Gear and T-Bolt Clamps are manufactured from T-304 Stainless Steel. We offer a variety of clamping ranges to fit your custom needs.

See page 20 for a complete list of Clamps

V-BAND FLANGE ASSEMBLIES



ETL V-Band Clamps and Flanges are manufactured from T-304 Stainless Steel. We offer a variety of clamping ranges and Flange sizes to meet your custom needs.

See page 21 for a complete list of Flange Assemblies



WWW.ETLPERFORMANCE.COM
SALES@ETLPERFORMANCE.COM

amazonPrime **ebay**

ETL UNIVERSAL CORE KITS

242 SERIES UNIVERSAL INTERCOOLER KITS & PIPING KITS

| Parts No. | Universal Intercooler Kits | | Color Options |
|-----------|--------------------------------------|-----------|---------------|
| 242002 | 2" Intercooler - 27" - 241005 | Universal | BLACK - HOSE |
| | 2Pcs x 2.00" 180 Deg. Pipe - 215003 | | RED - HOSE |
| | 2Pcs x 2.00" 90 Deg. Pipe - 214003 | | BLUE - HOSE |
| | 2Pcs x 2.00" 45 Deg. Pipe - 213003 | | |
| | 2Pcs x 2.00" Straight Pipe - 216003 | | |
| | 2Pcs x 2.00" Silicone Elbow Hose | | |
| | 6Pcs x 2.00" Silicone Straight Hose | | |
| | 16Pcs x 2.00" T-Bolt Clamps - 221005 | | |
| 242003 | 2.5" Intercooler - 26" - 241001 | Universal | BLACK - HOSE |
| | 2Pcs x 2.50" 180 Deg. Pipe - 215006 | | RED - HOSE |
| | 2Pcs x 2.50" 90 Deg. Pipe - 214006 | | BLUE - HOSE |
| | 2Pcs x 2.50" 45 Deg. Pipe - 213006 | | |
| | 2Pcs x 2.50" Straight Pipe - 216006 | | |
| | 2Pcs x 2.50" Silicone Elbow Hose | | |
| | 6Pcs x 2.50" Silicone Straight Hose | | |
| | 16Pcs x 2.50" T-Bolt Clamps - 221007 | | |
| 242004 | 2.5" Intercooler - 30" - 241002 | Universal | BLACK - HOSE |
| | 2Pcs x 2.50" 180 Deg. Pipe - 215006 | | RED - HOSE |
| | 2Pcs x 2.50" 90 Deg. Pipe - 214006 | | BLUE - HOSE |
| | 2Pcs x 2.50" 45 Deg. Pipe - 213006 | | |
| | 2Pcs x 2.50" Straight Pipe - 216006 | | |
| | 2Pcs x 2.50" Silicone Elbow Hose | | |
| | 6Pcs x 2.50" Silicone Straight Hose | | |
| | 16Pcs x 2.50" T-Bolt Clamps - 221007 | | |
| 242005 | 2.5" Intercooler - 33" - 241004 | Universal | BLACK - HOSE |
| | 2Pcs x 2.50" 180 Deg. Pipe - 215006 | | RED - HOSE |
| | 2Pcs x 2.50" 90 Deg. Pipe - 214006 | | BLUE - HOSE |
| | 2Pcs x 2.50" 45 Deg. Pipe - 213006 | | |
| | 2Pcs x 2.50" Straight Pipe - 216006 | | |
| | 2Pcs x 2.50" Silicone Elbow Hose | | |
| | 6Pcs x 2.50" Silicone Straight Hose | | |
| | 16Pcs x 2.50" T-Bolt Clamps - 221007 | | |
| 242006 | 3" Intercooler - 33" - 241003 | Universal | BLACK - HOSE |
| | 2Pcs x 3.00" 180 Deg. Pipe - 215008 | | RED - HOSE |
| | 2Pcs x 3.00" 90 Deg. Pipe - 214008 | | BLUE - HOSE |
| | 2Pcs x 3.00" 45 Deg. Pipe - 213008 | | |
| | 2Pcs x 3.00" Straight Pipe - 216008 | | |
| | 2Pcs x 3.00" Silicone Elbow Hose | | |
| | 6Pcs x 3.00" Silicone Straight Hose | | |
| | 16Pcs x 3.00" T-Bolt Clamps - 221009 | | |
| 242007 | 3" Intercooler - 31" - 241006 | Universal | BLACK - HOSE |
| | 2Pcs x 3.00" 180 Deg. Pipe - 215008 | | RED - HOSE |
| | 2Pcs x 3.00" 90 Deg. Pipe - 214008 | | BLUE - HOSE |
| | 2Pcs x 3.00" 45 Deg. Pipe - 213008 | | |
| | 2Pcs x 3.00" Straight Pipe - 216008 | | |
| | 2Pcs x 3.00" Silicone Elbow Hose | | |
| | 6Pcs x 3.00" Silicone Straight Hose | | |
| | 16Pcs x 3.00" T-Bolt Clamps - 221009 | | |

273 SERIES UNIVERSAL INTERCOOLER KITS & PIPING KITS

| Parts No. | Universal Piping Kits | | Color Options |
|-----------|--------------------------------------|-----------|---------------|
| 273001 | 2.00" Universal Pipe Kit | | BLACK - HOSE |
| | 2Pcs x 2.00" 180 Deg. Pipe - 215003 | | RED - HOSE |
| | 2Pcs x 2.00" 90 Deg. Pipe - 214003 | | BLUE - HOSE |
| | 2Pcs x 2.00" 45 Deg. Pipe - 213003 | | |
| | 2Pcs x 2.00" Straight Pipe - 216003 | | |
| | 2Pcs x 2.00" Silicone Elbow Hose | | |
| | 6Pcs x 2.00" Silicone Straight Hose | | |
| | 16Pcs x 2.00" T-Bolt Clamps - 221005 | | |
| 273002 | 2.50" Universal Pipe Kit | Universal | BLACK - HOSE |
| | 2Pcs x 2.50" 180 Deg. Pipe - 215006 | | RED - HOSE |
| | 2Pcs x 2.50" 90 Deg. Pipe - 214006 | | BLUE - HOSE |
| | 2Pcs x 2.50" 45 Deg. Pipe - 213006 | | |
| | 2Pcs x 2.50" Straight Pipe - 216006 | | |
| | 2Pcs x 2.50" Silicone Elbow Hose | | |
| | 6Pcs x 2.50" Silicone Straight Hose | | |
| | 16Pcs x 2.50" T-Bolt Clamps - 221007 | | |
| 273003 | 3.00" Universal Pipe Kit | Universal | BLACK - HOSE |
| | 2Pcs x 3.00" 180 Deg. Pipe - 215008 | | RED - HOSE |
| | 2Pcs x 3.00" 90 Deg. Pipe - 214008 | | BLUE - HOSE |
| | 2Pcs x 3.00" 45 Deg. Pipe - 213008 | | |
| | 2Pcs x 3.00" Straight Pipe - 216008 | | |
| | 2Pcs x 3.00" Silicone Elbow Hose | | |
| | 6Pcs x 3.00" Silicone Straight Hose | | |
| | 16Pcs x 3.00" T-Bolt Clamps - 221009 | | |



JOINERS

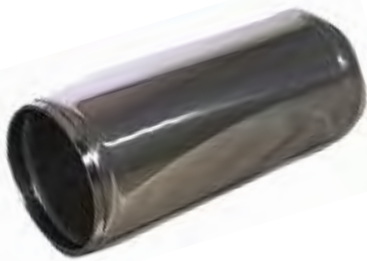
| Parts No. | Tube O.D. | Overall Length |
|-----------|------------------|------------------|
| 211001 | 1.00" (25.40mm) | 3.00" (76.00mm) |
| 211002 | 1.00" (25.40mm) | 6.00" (150.00mm) |
| 211003 | 1.25" (32.00mm) | 3.00" (76.00mm) |
| 211004 | 1.25" (32.00mm) | 6.00" (150.00mm) |
| 211005 | 1.50" (38.00mm) | 3.00" (76.00mm) |
| 211006 | 1.50" (38.00mm) | 6.00" (150.00mm) |
| 211007 | 1.77" (45.00mm) | 3.00" (76.00mm) |
| 211008 | 1.77" (45.00mm) | 6.00" (150.00mm) |
| 211009 | 2.00" (50.80mm) | 3.00" (76.00mm) |
| 211010 | 2.00" (50.80mm) | 6.00" (150.00mm) |
| 211011 | 2.12" (54.00mm) | 3.00" (76.00mm) |
| 211012 | 2.12" (54.00mm) | 6.00" (150.00mm) |
| 211013 | 2.36" (60.00mm) | 3.00" (76.00mm) |
| 211014 | 2.36" (60.00mm) | 6.00" (150.00mm) |
| 211015 | 2.50" (63.50mm) | 3.00" (76.00mm) |
| 211016 | 2.50" (63.50mm) | 6.00" (150.00mm) |
| 211017 | 2.75" (70.00mm) | 3.00" (76.00mm) |
| 211018 | 2.75" (70.00mm) | 6.00" (150.00mm) |
| 211019 | 3.00" (76.00mm) | 3.00" (76.00mm) |
| 211020 | 3.00" (76.00mm) | 6.00" (150.00mm) |
| 211021 | 3.15" (80.00mm) | 3.00" (76.00mm) |
| 211022 | 3.15" (80.00mm) | 6.00" (150.00mm) |
| 211023 | 3.50" (89.00mm) | 3.00" (76.00mm) |
| 211024 | 3.50" (89.00mm) | 6.00" (150.00mm) |
| 211025 | 4.00" (102.00mm) | 3.00" (76.00mm) |
| 211026 | 4.00" (102.00mm) | 6.00" (150.00mm) |

45° TUBES

| Parts No. | Tube O.D. | Leg Length | CLR |
|-----------|------------------|------------------|--------------------|
| 213001 | 1.50" (38.00mm) | 6.00" (150.00mm) | R2.36" (R60.00mm) |
| 213002 | 1.77" (45.00mm) | 6.00" (150.00mm) | R2.75" (R70.00mm) |
| 213003 | 2.00" (50.00mm) | 6.00" (150.00mm) | R3.15" (R80.00mm) |
| 213004 | 2.12" (54.00mm) | 6.00" (150.00mm) | R3.35" (R85.00mm) |
| 213005 | 2.36" (60.00mm) | 6.00" (150.00mm) | R3.74" (R95.00mm) |
| 213006 | 2.50" (63.50mm) | 6.00" (150.00mm) | R3.94" (R100.00mm) |
| 213007 | 2.75" (70.00mm) | 6.00" (150.00mm) | R4.33" (R110.00mm) |
| 213008 | 3.00" (76.00mm) | 6.00" (150.00mm) | R4.72" (R120.00mm) |
| 213009 | 3.15" (80.00mm) | 6.00" (150.00mm) | R5.00" (R128.00mm) |
| 213010 | 3.50" (89.00mm) | 8.00" (203.00mm) | R5.63" (R143.00mm) |
| 213011 | 4.00" (101.60mm) | 8.00" (203.00mm) | R6.50" (R165.00mm) |

90° TUBES

| Parts No. | Tube O.D. | Leg Length | CLR |
|-----------|------------------|------------------|--------------------|
| 214001 | 1.50" (38.00mm) | 6.00" (150.00mm) | R2.36" (R60.00mm) |
| 214002 | 1.77" (45.00mm) | 6.00" (150.00mm) | R2.75" (R70.00mm) |
| 214003 | 2.00" (50.00mm) | 6.00" (150.00mm) | R3.15" (R80.00mm) |
| 214004 | 2.12" (54.00mm) | 6.00" (150.00mm) | R3.35" (R85.00mm) |
| 214005 | 2.36" (60.00mm) | 6.00" (150.00mm) | R3.74" (R95.00mm) |
| 214006 | 2.50" (63.50mm) | 6.00" (150.00mm) | R3.94" (R100.00mm) |
| 214007 | 2.75" (70.00mm) | 6.00" (150.00mm) | R4.33" (R110.00mm) |
| 214008 | 3.00" (76.00mm) | 6.00" (150.00mm) | R4.72" (R120.00mm) |
| 214009 | 3.15" (80.00mm) | 6.00" (150.00mm) | R5.00" (R128.00mm) |
| 214010 | 3.50" (89.00mm) | 8.00" (203.00mm) | R5.63" (R143.00mm) |
| 214011 | 4.00" (101.60mm) | 8.00" (203.00mm) | R6.50" (R165.00mm) |



180° TUBES

| Parts No. | Tube O.D. | Leg Length | CLR |
|-----------|------------------|------------------|--------------------|
| 215001 | 1.50" (38.00mm) | 6.00" (150.00mm) | R2.36" (R60.00mm) |
| 215002 | 1.77" (45.00mm) | 6.00" (150.00mm) | R2.75" (R70.00mm) |
| 215003 | 2.00" (50.00mm) | 6.00" (150.00mm) | R3.15" (R80.00mm) |
| 215004 | 2.12" (54.00mm) | 6.00" (150.00mm) | R3.35" (R85.00mm) |
| 215005 | 2.36" (60.00mm) | 6.00" (150.00mm) | R3.74" (R95.00mm) |
| 215006 | 2.50" (63.50mm) | 6.00" (150.00mm) | R3.94" (R100.00mm) |
| 215007 | 2.75" (70.00mm) | 6.00" (150.00mm) | R4.33" (R110.00mm) |
| 215008 | 3.00" (76.00mm) | 6.00" (150.00mm) | R4.72" (R120.00mm) |
| 215009 | 3.15" (80.00mm) | 6.00" (150.00mm) | R5.00" (R128.00mm) |
| 215010 | 3.50" (89.00mm) | 8.00" (203.00mm) | R5.63" (R143.00mm) |
| 215011 | 4.00" (101.60mm) | 8.00" (203.00mm) | R6.50" (R165.00mm) |

STRAIGHT TUBES

| Parts No. | Tube O.D. | Overall Length |
|-----------|------------------|-------------------|
| 216001 | 1.50" (38.00mm) | 18.00" (450.00mm) |
| 216002 | 1.77" (45.00mm) | 18.00" (450.00mm) |
| 216003 | 2.00" (50.00mm) | 18.00" (450.00mm) |
| 216004 | 2.12" (54.00mm) | 18.00" (450.00mm) |
| 216005 | 2.36" (60.00mm) | 18.00" (450.00mm) |
| 216006 | 2.50" (63.50mm) | 18.00" (450.00mm) |
| 216007 | 2.75" (70.00mm) | 18.00" (450.00mm) |
| 216008 | 3.00" (76.00mm) | 18.00" (450.00mm) |
| 216009 | 3.15" (80.00mm) | 18.00" (450.00mm) |
| 216010 | 3.50" (89.00mm) | 18.00" (450.00mm) |
| 216011 | 4.00" (101.60mm) | 18.00" (450.00mm) |

4" T-JOINERS

| Parts No. | Tube O.D. | Sub-Tube O.D. | Sub-Tube Overall Length |
|-----------|-----------------|-----------------|-------------------------|
| 212001 | 1.97" (50.00mm) | 1.00" (25.00mm) | 1.62" (41.00mm) |
| 212002 | 1.97" (50.00mm) | 1.25" (32.00mm) | 1.62" (41.00mm) |
| 212003 | 2.16" (55.00mm) | 1.00" (25.00mm) | 1.62" (41.00mm) |
| 212004 | 2.16" (55.00mm) | 1.25" (32.00mm) | 1.62" (41.00mm) |
| 212005 | 2.36" (60.00mm) | 1.00" (25.00mm) | 1.62" (41.00mm) |
| 212006 | 2.36" (60.00mm) | 1.25" (32.00mm) | 1.62" (41.00mm) |
| 212007 | 2.50" (63.50mm) | 1.00" (25.00mm) | 1.62" (41.00mm) |
| 212008 | 2.50" (63.50mm) | 1.25" (32.00mm) | 1.62" (41.00mm) |
| 212009 | 2.75" (70.00mm) | 1.00" (25.00mm) | 1.62" (41.00mm) |
| 212010 | 2.75" (70.00mm) | 1.25" (32.00mm) | 1.62" (41.00mm) |
| 212011 | 3.00" (76.00mm) | 1.00" (25.00mm) | 1.62" (41.00mm) |
| 212012 | 3.00" (76.00mm) | 1.25" (32.00mm) | 1.62" (41.00mm) |
| 212013 | 3.50" (89.00mm) | 1.00" (25.00mm) | 1.62" (41.00mm) |
| 212014 | 3.50" (89.00mm) | 1.25" (32.00mm) | 1.62" (41.00mm) |



WWW.ETLPERFORMANCE.COM
SALES@ETLPERFORMANCE.COM

amazonPrime ebay

ETL SILICONE HOSES

3" STRAIGHT HOSES

| Inlet I.D. | Outlet I.D. | Black Part No. | Blue Part No. | Red Part No. |
|------------|-------------|----------------|---------------|--------------|
| 1.00" | 1.00" | 231001 | 231015 | 231029 |
| 1.25" | 1.25" | 231002 | 231016 | 231030 |
| 1.50" | 1.50" | 231003 | 231017 | 231031 |
| 1.75" | 1.75" | 231004 | 231018 | 231032 |
| 2.00" | 2.00" | 231005 | 231019 | 231033 |
| 2.25" | 2.25" | 231006 | 231020 | 231034 |
| 2.50" | 2.50" | 231007 | 231021 | 231035 |
| 2.75" | 2.75" | 231008 | 231022 | 231036 |
| 3.00" | 3.00" | 231009 | 231023 | 231037 |
| 3.25" | 3.25" | 231010 | 231024 | 231038 |
| 3.50" | 3.50" | 231011 | 231025 | 231039 |
| 4.00" | 4.00" | 231012 | 231026 | 231040 |
| 4.50" | 4.50" | 231013 | 231027 | 231041 |
| 5.00" | 5.00" | 231014 | 231028 | 231042 |

12" STRAIGHT HOSES

| Inlet I.D. | Outlet I.D. | Black Part No. | Blue Part No. | Red Part No. |
|------------|-------------|----------------|---------------|--------------|
| 1.00" | 1.00" | 231043 | 231057 | 231071 |
| 1.25" | 1.25" | 231044 | 231058 | 231072 |
| 1.50" | 1.50" | 231045 | 231059 | 231073 |
| 1.75" | 1.75" | 231046 | 231060 | 231074 |
| 2.00" | 2.00" | 231047 | 231061 | 231075 |
| 2.25" | 2.25" | 231048 | 231062 | 231076 |
| 2.50" | 2.50" | 231049 | 231063 | 231077 |
| 2.75" | 2.75" | 231050 | 231064 | 231078 |
| 3.00" | 3.00" | 231051 | 231065 | 231079 |
| 3.25" | 3.25" | 231052 | 231066 | 231080 |
| 3.50" | 3.50" | 231053 | 231067 | 231081 |
| 4.00" | 4.00" | 231054 | 231068 | 231082 |
| 4.50" | 4.50" | 231055 | 231069 | 231083 |
| 5.00" | 5.00" | 231056 | 231070 | 231084 |

36" STRAIGHT HOSES

| Inlet I.D. | Outlet I.D. | Black Part No. | Blue Part No. | Red Part No. |
|------------|-------------|----------------|---------------|--------------|
| 1.00" | 1.00" | 231085 | 231099 | 231113 |
| 1.25" | 1.25" | 231086 | 231100 | 231114 |
| 1.50" | 1.50" | 231087 | 231101 | 231115 |
| 1.75" | 1.75" | 231088 | 231102 | 231116 |
| 2.00" | 2.00" | 231089 | 231103 | 231117 |
| 2.25" | 2.25" | 231090 | 231104 | 231118 |
| 2.50" | 2.50" | 231091 | 231105 | 231119 |
| 2.75" | 2.75" | 231092 | 231106 | 231120 |
| 3.00" | 3.00" | 231093 | 231107 | 231121 |
| 3.25" | 3.25" | 231094 | 231108 | 231122 |
| 3.50" | 3.50" | 231095 | 231109 | 231123 |
| 4.00" | 4.00" | 231096 | 231110 | 231124 |
| 4.50" | 4.50" | 231097 | 231111 | 231125 |
| 5.00" | 5.00" | 231098 | 231112 | 231126 |

45° ELBOWS

| Inlet I.D. | Outlet I.D. | CLR. | Leg Length | Black Part No. | Blue Part No. | Red Part No. |
|------------|-------------|-------|------------|----------------|---------------|--------------|
| 1.50" | 1.50" | 1.50" | 6.00" | 236001 | 236012 | 236023 |
| 1.75" | 1.75" | 1.75" | 6.00" | 236002 | 236013 | 236024 |
| 2.00" | 2.00" | 2.00" | 6.00" | 236003 | 236014 | 236025 |
| 2.25" | 2.25" | 2.25" | 6.00" | 236004 | 236015 | 236026 |
| 2.50" | 2.50" | 2.50" | 6.00" | 236005 | 236016 | 236027 |
| 2.75" | 2.75" | 2.75" | 6.00" | 236006 | 236017 | 236028 |
| 3.00" | 3.00" | 3.00" | 6.00" | 236007 | 236018 | 236029 |
| 3.25" | 3.25" | 3.25" | 6.00" | 236008 | 236019 | 236030 |
| 3.50" | 3.50" | 3.50" | 6.00" | 236009 | 236020 | 236031 |
| 4.00" | 4.00" | 4.00" | 6.00" | 236010 | 236021 | 236032 |
| 4.50" | 4.50" | 4.50" | 6.00" | 236011 | 236022 | 236033 |

HIGH TEMPERATURE

| Size (I.D.) X Length | Rings | Black Part No. |
|----------------------|---------|----------------|
| 2.50" x 6.00" | 3 Rings | 234001 |
| 3.00" x 6.00" | 3 Rings | 234002 |
| 3-1/2" x 6.00" | 3 Rings | 234003 |
| 4.00" x 6.00" | 3 Rings | 234004 |
| 5.00" x 6.00" | 3 Rings | 234005 |



90° REDUCER

| Inlet I.D. | Outlet I.D. | CLR. | Leg Length | Black Part No. | Blue Part No. | Red Part No. |
|------------|-------------|-------|------------|----------------|---------------|--------------|
| 2.00" | 2.50" | 2.50" | 7.50" | 237001 | 237006 | 237011 |
| 2.50" | 2.75" | 2.75" | 8.00" | 237002 | 237007 | 237012 |
| 2.50" | 3.00" | 3.00" | 8.00" | 237003 | 237008 | 237013 |
| 2.75" | 3.00" | 3.00" | 8.00" | 237004 | 237009 | 237014 |
| 2.00" | 4.00" | 4.00" | 8.00" | 237005 | 237010 | 237015 |

ETL SILICONE HOSES

90° ELBOWS

| Inlet I.D. | Outlet I.D. | CLR. | Leg Length | Black Part No. | Blue Part No. | Red Part No. |
|------------|-------------|-------|------------|----------------|---------------|--------------|
| 1.50" | 1.50" | 1.50" | 7.00" | 235001 | 235012 | 235023 |
| 1.75" | 1.75" | 1.75" | 7.00" | 235002 | 235013 | 235024 |
| 2.00" | 2.00" | 2.00" | 7.00" | 235003 | 235014 | 235025 |
| 2.25" | 2.25" | 2.25" | 8.00" | 235004 | 235015 | 235026 |
| 2.50" | 2.50" | 2.50" | 8.00" | 235005 | 235016 | 235027 |
| 2.75" | 2.75" | 2.75" | 8.00" | 235006 | 235017 | 235028 |
| 3.00" | 3.00" | 3.00" | 8.00" | 235007 | 235018 | 235029 |
| 3.25" | 3.25" | 3.25" | 8.00" | 235008 | 235019 | 235030 |
| 3.50" | 3.50" | 3.50" | 8.00" | 235009 | 235020 | 235031 |
| 4.00" | 4.00" | 4.00" | 8.00" | 235010 | 235021 | 235032 |
| 4.50" | 4.50" | 4.50" | 8.00" | 235011 | 235022 | 235033 |

3" HUMP HOSES

| Inlet I.D. | Outlet I.D. | Black Part No. | Blue Part No. | Red Part No. |
|------------|-------------|----------------|---------------|--------------|
| 1.50" | 1.50" | 233001 | 233012 | 233023 |
| 2.00" | 2.00" | 233002 | 233013 | 233024 |
| 2.25" | 2.25" | 233003 | 233014 | 233025 |
| 2.50" | 2.50" | 233004 | 233015 | 233026 |
| 2.75" | 2.75" | 233005 | 233016 | 233027 |
| 3.00" | 3.00" | 233006 | 233017 | 233028 |
| 3.25" | 3.25" | 233007 | 233018 | 233029 |
| 3.50" | 3.50" | 233008 | 233019 | 233030 |
| 4.00" | 4.00" | 233009 | 233020 | 233031 |
| 4.50" | 4.50" | 233010 | 233021 | 233032 |
| 5.00" | 5.00" | 233011 | 233022 | 233033 |
| 1.75" | 1.75" | 233034 | 233035 | 233036 |

3" REDUCER HOSES

| Diameter | Inlet I.D. | Outlet I.D. | Black Part No. | Blue Part No. | Red Part No. |
|---------------|------------|-------------|----------------|---------------|--------------|
| 1.50" x 1.75" | 1.50" | 1.75" | 232001 | 232028 | 232055 |
| 1.50" x 2.00" | 1.50" | 2.00" | 232002 | 232029 | 232056 |
| 1.75" x 2.00" | 1.75" | 2.00" | 232003 | 232030 | 232057 |
| 1.75" x 2.50" | 1.75" | 2.50" | 232004 | 232031 | 232058 |
| 2.00" x 2.25" | 2.00" | 2.25" | 232005 | 232032 | 232059 |
| 2.00" x 2.50" | 2.00" | 2.50" | 232006 | 232033 | 232060 |
| 2.00" x 2.75" | 2.00" | 2.75" | 232007 | 232034 | 232061 |
| 2.00" x 3.00" | 2.00" | 3.00" | 232008 | 232035 | 232062 |
| 2.25" x 2.50" | 2.25" | 2.50" | 232009 | 232036 | 232063 |
| 2.25" x 2.75" | 2.25" | 2.75" | 232010 | 232037 | 232064 |
| 2.25" x 3.00" | 2.25" | 3.00" | 232011 | 232038 | 232065 |
| 2.50" x 2.75" | 2.50" | 2.75" | 232012 | 232039 | 232066 |
| 2.50" x 3.00" | 2.50" | 3.00" | 232013 | 232040 | 232067 |
| 2.50" x 3.25" | 2.50" | 3.25" | 232014 | 232041 | 232068 |
| 2.50" x 3.50" | 2.50" | 3.50" | 232015 | 232042 | 232069 |
| 2.75" x 3.00" | 2.75" | 3.00" | 232016 | 232043 | 232070 |
| 2.75" x 3.25" | 2.75" | 3.25" | 232017 | 232044 | 232071 |
| 3.00" x 3.25" | 3.00" | 3.25" | 232018 | 232045 | 232072 |
| 3.00" x 3.50" | 3.00" | 3.50" | 232019 | 232046 | 232073 |
| 3.00" x 4.00" | 3.00" | 4.00" | 232020 | 232047 | 232074 |
| 3.25" x 3.50" | 3.25" | 3.50" | 232021 | 232048 | 232075 |
| 3.25" x 4.00" | 3.25" | 4.00" | 232022 | 232049 | 232076 |
| 3.50" x 4.00" | 3.50" | 4.00" | 232023 | 232050 | 232077 |
| 3.50" x 4.50" | 3.50" | 4.50" | 232024 | 232051 | 232078 |
| 4.00" x 4.50" | 4.00" | 4.50" | 232025 | 232052 | 232079 |
| 4.00" x 5.00" | 4.00" | 5.00" | 232026 | 232053 | 232080 |
| 5.00" x 6.00" | 5.00" | 6.00" | 232027 | 232054 | 232081 |



WORM GEAR CLAMPS

| Parts No. | Clamping Range | Quantity | Band Width |
|-----------|--------------------------------|------------------|----------------|
| 222001 | 0.25"-0.63" (6.00mm-16.00mm) | 10 clamps / pack | 5/16"(8.000mm) |
| 222002 | 0.44"-0.90"(11.00mm-23.00mm) | 10 clamps / pack | 1/2"(12.70mm) |
| 222003 | 0.75"-1.50"(19.00mm-38.00mm) | 10 clamps / pack | 1/2"(12.70mm) |
| 222004 | 1.30"-2.16"(33.00mm-55.00mm) | 10 clamps / pack | 1/2"(12.70mm) |
| 222005 | 2.04"-3.00"(52.00mm-76.00mm) | 10 clamps / pack | 1/2"(12.70mm) |
| 222006 | 2.79"-3.74"(71.00mm-95.00mm) | 10 clamps / pack | 1/2"(12.70mm) |
| 222007 | 3.54"-4.49"(90.00mm-114.00mm) | 10 clamps / pack | 1/2"(12.70mm) |
| 222008 | 4.05"-5.00"(103.00mm-127.00mm) | 10 clamps / pack | 1/2"(12.70mm) |
| 222009 | 4.56"-5.51"(116.00mm-140.00mm) | 10 clamps / pack | 1/2"(12.70mm) |

V-BAND CLAMPS

| Part No. | Description | Diameter |
|----------|----------------------------------|----------|
| 251101 | 2.00" T304 Stainless Steel Clamp | 2.00" |
| 251102 | 2.25" T304 Stainless Steel Clamp | 2.25" |
| 251103 | 2.50" T304 Stainless Steel Clamp | 2.50" |
| 251104 | 2.75" T304 Stainless Steel Clamp | 2.75" |
| 251105 | 3.00" T304 Stainless Steel Clamp | 3.00" |
| 251106 | 3.50" T304 Stainless Steel Clamp | 3.50" |
| 251107 | 4.00" T304 Stainless Steel Clamp | 4.00" |
| 251108 | 5.00" T304 Stainless Steel Clamp | 5.00" |



T-BOLT CLAMPS

| Parts No. | Clamping Range | Quantity | Band Width |
|-----------|----------------|----------|------------|
| 221001 | 1.25"-1.44" | 2 Clamps | 19.00mm |
| 221002 | 1.50"-1.69" | 2 Clamps | 19.00mm |
| 221003 | 1.75"-2.00" | 2 Clamps | 19.00mm |
| 221004 | 2.00"-2.31" | 2 Clamps | 19.00mm |
| 221005 | 2.25"-2.56" | 2 Clamps | 19.00mm |
| 221006 | 2.50"-2.80" | 2 Clamps | 19.00mm |
| 221007 | 2.75"-3.07" | 2 Clamps | 19.00mm |
| 221008 | 3.00"-3.35" | 2 Clamps | 19.00mm |
| 221009 | 3.25"-3.56" | 2 Clamps | 19.00mm |
| 221010 | 3.50"-3.82" | 2 Clamps | 19.00mm |
| 221011 | 3.75"-4.07" | 2 Clamps | 19.00mm |
| 221012 | 4.25"-4.56" | 2 Clamps | 19.00mm |
| 221013 | 4.75"-5.07" | 2 Clamps | 19.00mm |
| 221014 | 5.30"-5.60" | 2 Clamps | 19.00mm |
| 221015 | 6.28"-6.59" | 2 Clamps | 19.00mm |



LAP & BUTT JOINT CLAMPS

| Part No. | Description | Diameter |
|----------|------------------------------------|--------------|
| 361201 | 2.50"-2.625" Range Lap Joint Clamp | 2.50"-2.625" |
| 361202 | 3.00"-3.125" Range Lap Joint Clamp | 3.00"-3.125" |
| 361203 | 2.50" Diameter Butt Joint Clamp | 2.50" |
| 361204 | 3.00" Diameter Butt Joint Clamp | 3.00" |



WWW.ETLPERFORMANCE.COM
SALES@ETLPERFORMANCE.COM

amazonPrime ebay

ETL V-BAND FLANGE ASSEMBLIES

V-BAND FLANGE (ALUMINUM)

| Parts No. | OD | Description |
|-----------|--------|---|
| 252101 | 2.00" | V-Band Aluminium Flange for 2.00" (Pair) |
| 252102 | 2-1/4" | V-Band Aluminium Flange for 2-1/4" (Pair) |
| 252103 | 2-1/2" | V-Band Aluminium Flange for 2-1/2" (Pair) |
| 252104 | 3.00" | V-Band Aluminium Flange for 3.00" (Pair) |
| 252105 | 3-1/2" | V-Band Aluminium Flange for 3-1/2" (Pair) |
| 252106 | 4.00" | V-Band Aluminium Flange for 4.00" (Pair) |

V-BAND FLANGE ASSEMBLY (ALUMINUM)

| Parts No. | OD | Description |
|-----------|--------|---|
| 252001 | 2.00" | T304SS V-Band Clamp + Aluminium Flanges Assembly for 2.00" OD Tubing |
| 252002 | 2-1/4" | T304SS V-Band Clamp + Aluminium Flanges Assembly for 2-1/4" OD Tubing |
| 252003 | 2-1/2" | T304SS V-Band Clamp + Aluminium Flanges Assembly for 2-1/2" OD Tubing |
| 252004 | 3.00" | T304SS V-Band Clamp + Aluminium Flanges Assembly for 3.00" OD Tubing |
| 252005 | 3-1/2" | T304SS V-Band Clamp + Aluminium Flanges Assembly for 3-1/2" OD Tubing |
| 252006 | 4.00" | T304SS V-Band Clamp + Aluminium Flanges Assembly for 4.00" OD Tubing |

V-BAND FLANGE (PAIR STAINLESS STEEL)

| Part No. | Description | Diameter |
|----------|-------------------------------------|----------|
| 251201 | 2.00" Flanges T304 Stainless (Pair) | 2.00" |
| 251202 | 2.25" Flanges T304 Stainless (Pair) | 2.25" |
| 251203 | 2.50" Flanges T304 Stainless (Pair) | 2.50" |
| 251204 | 2.75" Flanges T304 Stainless (Pair) | 2.75" |
| 251205 | 3.00" Flanges T304 Stainless (Pair) | 3.00" |
| 251206 | 3.50" Flanges T304 Stainless (Pair) | 3.50" |
| 251207 | 4.00" Flanges T304 Stainless (Pair) | 4.00" |
| 251208 | 5.00" Flanges T304 Stainless (Pair) | 5.00" |

V-BAND FLANGE ASSEMBLY (STAINLESS STEEL)

| Part No. | Description | Diameter |
|----------|--------------------------------------|----------|
| 251001 | 2.00" T304 Stainless Clamp & Flanges | 2.00" |
| 251002 | 2.25" T304 Stainless Clamp & Flanges | 2.25" |
| 251003 | 2.50" T304 Stainless Clamp & Flanges | 2.50" |
| 251004 | 2.75" T304 Stainless Clamp & Flanges | 2.75" |
| 251005 | 3.00" T304 Stainless Clamp & Flanges | 3.00" |
| 251006 | 3.50" T304 Stainless Clamp & Flanges | 3.50" |
| 251007 | 4.00" T304 Stainless Clamp & Flanges | 4.00" |
| 251008 | 5.00" T304 Stainless Clamp & Flanges | 5.00" |



WWW.ETLPERFORMANCE.COM

SALES@ETLPERFORMANCE.COM

amazonPrime

ebay





COMING SOON!



ETL FORD POWERSTROKE WATER TO AIR INTERCOOLER & EXHAUST

ETL Performance is proud to announce that we will be adding our own water to air intercooler for the 2011-2016 6.7L Ford PowerStroke. On your 6.7L PowerStroke the largest restriction is the factory water to air intercooler which slows air velocity dramatically. Upgrading to the ETL Performance water to air intercooler will reduce that restriction. In addition, we are pleased to announce our new exhaust for the 6.7L PowerStroke which will boost your airflow causing better fuel economy, EGT's, and eliminating poor performance. If you have any questions please do not hesitate to ask one of our knowledgeable staff.

ETL GMC & DODGE AIR INTAKES

Coming soon to ETL Performance, cold air intakes for the 2011-2015 6.7L Cummins and also for the 1999-2003 6.6L Duramax. Without adequate airflow your diesel truck cannot breathe, resulting in poor performance and fuel economy, as well as high exhaust gas temperatures (EGT's). With the new ETL Performance cold air intake, you can eliminate all of those problems and drastically improve overall airflow. As always we are here to answer all of your questions so please don't hesitate to ask if you have a concern.



ETL **ETL PERFORMANCE**
PRODUCTS, INC
HIGH PERFORMANCE INTERCOOLERS

234.575.7226 / SALES@ETLPERFORMANCE.COM

WWW.ETLPERFORMANCE.COM

1717 PENNSYLVANIA AVE. | SALEM, OH 44460

