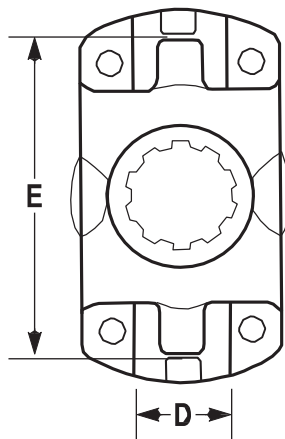


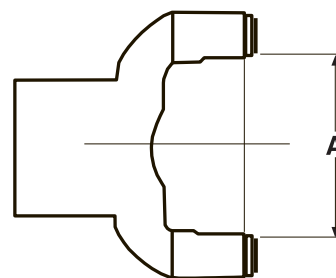
# DRIVESHAFT MEASUREMENTS

\* MEASURE FOR U-JOINT SIZE AT THIRD MEMBER YOKE



- E = 3 - 7/32" D = 1 - 1/16"
- E = 3 - 7/32" D = 1 - 1/8"
- E = 3 - 5/8" D = 1 - 1/16"
- E = 3 - 5/8" D = 1 - 1/8"
- E = 3 - 5/8" D = 1 - 3/16"
- E = 4 - 3/16" D = 1 - 3/16"
- E = 4 - 3/16" D = 1 - 3/8"
- E = 4 - 31/32" D = 1 - 3/8"

IF YOUR MEASUREMENTS DON'T MATCH ONE OF THEM, CHECK FOR YOKE WEAR AT "E" OR "A"



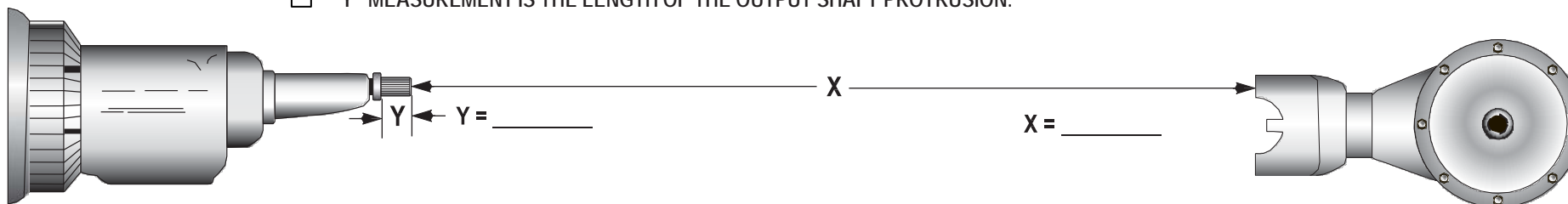
SOME CHRYSLER CORP.

- A = 2 - 1/8"
- A = 2 - 5/8"

SOME GENERAL MOTORS

- A = 2 - 9/16"

- "X" MEASUREMENT IS FROM THE TIP OF THE TRANSMISSION OUTPUT SHAFT TO THE CENTERLINE OF U-JOINT AT THE THIRD MEMBER. THIS WILL BE THE FLAT SURFACE WHERE THE U-BOLT HOLE IS DRILLED.
- "Y" MEASUREMENT IS THE LENGTH OF THE OUTPUT SHAFT PROTRUSION.



OUTPUT SHAFT SPLINE COUNT = \_\_\_\_\_ MAKE & MODEL: \_\_\_\_\_ DIFFERENTIAL MAKE & MODEL: \_\_\_\_\_  
 NOTE: TH400 TRANS OUTPUT SHAFT  DRILLED AND TAPPED  OR UNDRILLED

## HANDY TIPS!

- THE VEHICLE MUST BE MEASURED AS IT IS TO OPERATE. JACKING UP THE VEHICLE WILL CHANGE YOUR DIMENSIONS.
- IF YOUR VEHICLE HAS A BOLT-ON TRANSMISSION YOKE, MEASURE BETWEEN U-JOINT CENTERLINES.
- IF THERE IS A FLANGE MOUNT ON EITHER OR BOTH ENDS, MEASURE TO ITS FACE.
- WHEN YOU INSTALL U-BOLTS DO NOT OVER TIGHTEN THEM. "D" DIMENSION 1 - 1/16" AND 1-1/8": 14-17 ft. lb.; 1-3/16": 20-24 ft. lb.; "D" DIMENSION 1-3/8": 32-37 ft. lb.

## ORDER FORM

### DRIVESHAFTS

Please build  Aluminum  Steel driveshaft(s) as indicated above

NOTE: ALL STEEL & ALUMINUM SHAFTS COME WITH U-JOINTS

**PINION YOKES** • Please send me \_\_\_\_\_ Pinion Yokes

**SOLID CROSS U-JOINTS** • Please send me \_\_\_\_\_ U-Joints

**TRANSMISSION YOKES** • Please send me \_\_\_\_\_ Transmission Yokes

### CENTER BEARING SUPPORTS

Please send me \_\_\_\_\_  Pedestal Style  U Bracket Style Yokes

VEHICLE YEAR \_\_\_\_\_ MAKE \_\_\_\_\_ MODEL \_\_\_\_\_

PART NUMBER	RACER NET

### SHIP TO:

NOTE: SHIPPING ADDRESS MUST BE A PHYSICAL LOCATION - NOT A P.O. BOX  
(Please Print Information)

NAME \_\_\_\_\_

ADDRESS \_\_\_\_\_

Street & Number

City State ZIP

PHONE \_\_\_\_\_

Area Code Number

My Check # \_\_\_\_\_ is enclosed

Please Charge my:  VISA  MasterCard  American Express Card

Card No. \_\_\_\_\_ Expiration Date \_\_\_\_ / \_\_\_\_

X \_\_\_\_\_  
Signature

Ship to me via UPS Ground - 1 - 2 - 3 • My estimated total is \_\_\_\_\_

# INLAND EMPIRE DRIVELINE

"FOR DRIVESHAFTS THAT MAKE A DIFFERENCE"

## HOW TO MEASURE FOR DRIVESHAFTS

## FAST - EASY - CORRECT - RELIABLE

ALUMINUM DRIVESHAFTS \* STEEL DRIVESHAFTS  
 PINION YOKES \* TRANSMISSION YOKES  
 SOLID CROSS U-JOINTS \* CENTER SUPPORT BEARINGS

- ★ 37 YEARS EXPERIENCE
- ★ 3 MEASUREMENTS NEEDED
- ★ 1 PHONE CALL
- ★ SHIPPED IN 48 HOURS
- ★ GUARANTEED TO FIT
- ★ AFFORDABLE PRICING
- ★ MADE IN THE USA



# 800.800.0109

### ONTARIO

4035 E. GUASTI RD., STE 301  
 ONTARIO, CA 91761

### CORONA

1540 COMMERCE ST., STE A  
 CORONA, CA 92880

PHONE: 909-390-3030 FAX: 909-390-3036

E.MAIL: tech@iedls.com WEB: www.iedls.com



facebook.com/InlandEmpireDriveLineService



### STEEL DRIVESHAFTS COMPLETE WITH TRANSMISSION YOKE

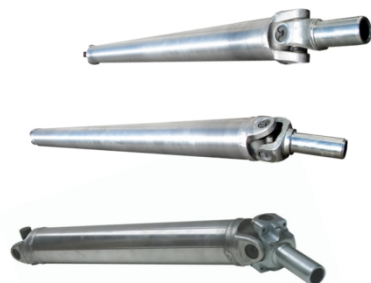
PART NO.	DESCRIPTION	LIST	MSRP
SK-31-31-83C	1310 3"	\$ 482.04	\$ 405.26
SK-31-35-83C	1310 3.5"	\$ 503.46	\$ 439.95
SK-33-35-83C	1330 3.5"	\$ 562.38	\$ 456.19
SK-35-35-83CRC	1350 3.5" Chromoly	\$1,130.48	\$ 731.30
SK-35-30-83C	1350 3"	\$ 530.24	\$ 434.97
SK-35-30-83CRC	1350 3" Chromoly	\$ 956.80	\$ 648.90
SK-35-35-83C	1350 3.5"	\$ 567.74	\$ 464.67



### ALUMINUM DRIVESHAFTS COMPLETE WITH TRANSMISSION YOKE

PART NO.	DESCRIPTION	LIST	MSRP
ALU-1310KP	Pol. Shaft/Chrm. Plate U-Jts & T- Yoke Kit	\$ 1,069.06	\$ 942.08
ALU-1310-C*	1310 3" 125 WALL	\$ 562.38	\$ 445.58
ALU-1310-3.5-C*	1310 3.5" .125 WALL	\$ 612.96	\$ 495.44
ALU-1330-3C	1330 3" .125 WALL"	\$ 623.28	\$ 477.41
ALU-1330-3.5-C*	1330 3.5" .125 WALL	\$ 645.67	\$ 567.58
ALU-1330-C*	1330 4" .125 WALL	\$ 696.28	\$ 604.71
ALU-1350-C*	1350 3.5" .125 WALL	\$ 644.86	\$ 567.58
ALU-1350KP	Pol. Shaft/Chrm. Plate U-Jts & T- Yoke Kit	\$1,203.50	\$1,082.12
ALU-1350-4-C*	1350 4" .125 WALL	\$ 728.59	\$ 578.19

\*POLISHED... PLEASE ADD \$144.20



### CARBON FIBER DRIVESHAFTS ••• CALL FOR QUOTE •••

NOTE: ALL DRIVESHAFT PRICES NOW INCLUDE SPICER® (OR COMPARABLE) U-JOINT AND SPICER STYLE TRANSMISSION SLIP YOKES. FOR AVAILABLE QUICK RELEASE YOKES, ADD \$75.00..

### CHROMOLY FORGED 1350 PINON YOKES

PART NO	DESCRIPTION	LIST	MSRP
PY-8.75-29	29 SPLINE CHRYSLER 8.75"	\$ 181.03	\$ 143.22
PY-8.75	10 SPLINE CHRYSLER 8.75"	\$ 181.03	\$ 143.22
PY-8.8	30 SPLINE FORD 8.8"	\$ 181.03	\$ 143.22
PY-9	28 SPLINE FORD 9"	\$ 181.03	\$ 143.22
PY-9P	35 SPLINE FORD 9"	\$ 181.03	\$ 143.22
PY-10	GM 8.5" 10 BOLT	\$ 181.03	\$ 143.22
PY-12	GM 12 BOLT	\$ 181.03	\$ 143.22
PY-60	DANA 60	\$ 181.03	\$ 143.22



### SOLID CROSS U-JOINTS

PART NO.	DESCRIPTION	LIST	MSRP
5-1310X	1310 SPICER®	\$ 40.95	\$ 28.71
5-1330X	1330 SPICER®	\$ 44.56	\$ 31.23
5-1350X	1350 SPICER®	\$ 52.35	\$ 36.69



ALL PRICES SUBJECT TO CHANGE WITHOUT NOTICE  
ALL PRICES ARE F.O.B. ONTARIO, CALIFORNIA

### TRANSMISSION YOKES

PART NO.	DESCRIPTION	LIST	MSRP
SY-350-1310	1310-TH350-PG-700R4	\$ 130.53	\$ 96.95
SY-400-1310	1310-TH400	\$ 165.49	\$ 134.67
SY-350-1350	1350-TH350-PG-700R	\$ 181.06	\$ 122.00
SY-400-1350	1350-TH400	\$ 189.58	\$ 126.55
SY-727-1350	1350-CHRYSLER 727	\$ 208.50	\$ 183.37
SY-C6-1350	1350-C6 & TREMEC	\$ 261.37	\$ 175.05
SY-C6-1330	1330 FOR C6-TREMEC 500 & 600	\$ 133.90	\$ 89.12
SY-C4-1310	1310 FOR C4-T5-AOD	\$ 124.13	\$ 109.17

YOKES FOR MANY OTHER APPLICATIONS , INCLUDING LIBERTY, BRINN, RICHMOND, DOUG NASH, ETC



### CHROMOLY FORGED TRANSMISSION SLIP YOKES

PART NO.	DESCRIPTION	LIST	MSRP
SY-350-1350Q	1350-TH350, PG, 700R, 4L60E	\$ 248.77	\$ 185.40
SY-400-1350Q	1350-TH400, 4L80E	\$ 248.77	\$ 185.40
SY-727-1350Q	1350-CHRYSLER 727	\$ 248.77	\$ 185.40
SY-904-1350Q	1350-904, SMALL NP833, 4 SPD	\$ 248.77	\$ 185.40
SY-C4-1350Q	C4 & T5	\$ 248.77	\$ 185.40
SY-C6-1350Q	1350-C6 & TREMEC	\$ 248.77	\$ 185.40
SY-AOD-1350Q	Ford AOD, AODe, 4R70W	\$ 248.77	\$ 185.40



### U-BOLT ELIMINATOR - 1350 SERIES

PART NO.	DESCRIPTION	LIST	MSRP
UBE-35	1350 SERIES	\$ 98.80	\$ 46.35
SY-UBE-35	1350 SERIES	\$ 98.80	\$ 46.35



### CENTER BEARING SUPPORTS

HIGH IMPACT POLYURETHANE CUSHION BEARINGS

#### PEDESTAL STYLE

PART NO	DESCRIPTION	LIST	MSRP
IE210527XS	1958-64 Chevrolet Cars 1958-72 Chevrolet & GMC Trucks	\$ 185.49	\$ 144.20



#### U-BRACKET STYLE

PART NO.	DESCRIPTION	LIST	MSRP
210088-1XS	Chevrolet, Dodge, Ford, GMC Bearing I.D. 1.3780"	\$ 166.04	\$ 128.75
210866-1XS	Chevrolet, Dodge, Ford, GMC Bearing I.D. 1.5748"	\$ 166.04	\$ 128.75
211590-1XS	Ranger Bearing I.D. 1.181"	\$ 166.04	\$ 128.75
211431XS	Ranger Bearing I.D. 1.259"	\$ 166.04	\$ 128.75
IE212028XS	Chevrolet HD Bearing I.D. 1.574	\$ 284.09	\$ 226.19



RS

NOTE: SPECIFY MAKE / MODEL AND BEARING I.D. SIZE ON YOUR ORDER FORM