



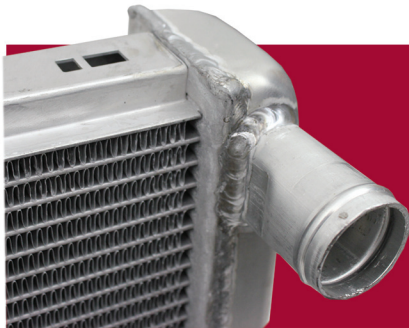
Not all Radiators are created equal!

➤ When determining which brand of aluminum radiator to buy...
Be sure you are comparing apples to apples!



"THE OTHER GUYS"

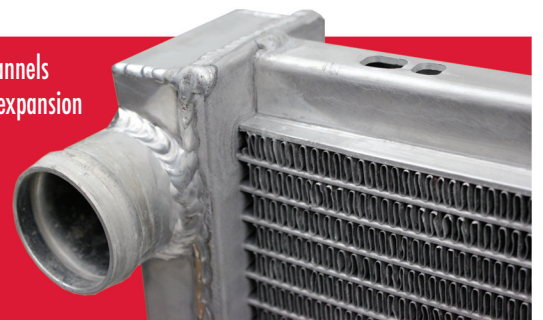
RADIATOR CONSTRUCTION



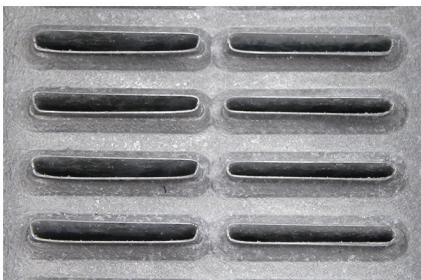
Northern Radiator uses a proven OE inspired inlet/outlet along with a side channel system that allows flex under pressure.

VS

Uses heavy, rigid side channels that do not allow for expansion under pressure, causing undue stress on corner tubes.



TUBE CONFIGURATION



When Northern Radiator says 2 ROWS, *We mean 2 ROWS of 1" tubes ALWAYS!*

VS

When "They" say two rows, it may be 1" or 3/4" or 5/8" or 1/2"... or some combination. Do you really want to leave it to chance?



OIL COOLER



High-capacity, efficient 7 plate oil coolers dissipate more heat. Super flow styles available!

VS

Less efficient old style "barrel" oil coolers dissipate less heat.



Northern®
RADIATOR

"THE OTHER GUYS"

TANKS



Most Northern Radiators are built with a one-piece precision stamped tank for appearance, fit, function and cooling.

VS

Square corners impede flow, more seams increase chance of cracks and leaks, all of which reduces its cooling capabilities.



FILLER NECK



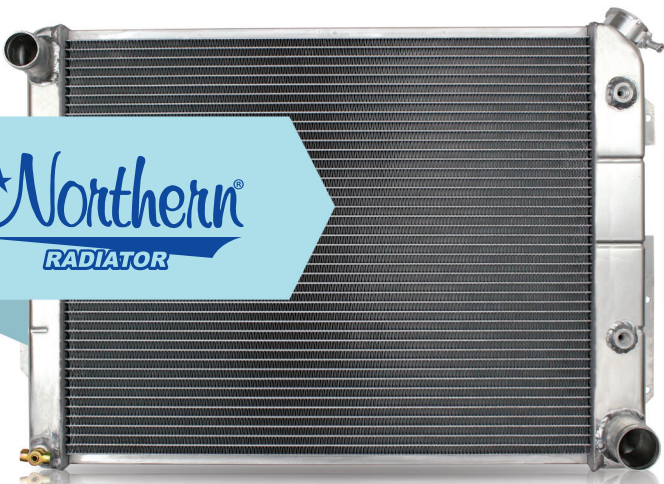
A billet filler neck is manufactured to SAE specification for performance and safety. Includes correct overflow tube on all muscle car applications. Interior weld for professionally finished look.

VS

Foreign design not compliant, has restrictive overflow tube opening.



Northern®
RADIATOR



"THE OTHER GUYS"



»»» When you want quality and dependability, you want Northern Radiator! «««