



***2019 BUYERS GUIDE***



For more than 25 years, both racers and car builders have relied upon QuickCar Racing Products for innovative, high-performance products. From the street to the track, QuickCar has built its reputation on quality, cutting-edge solutions designed to simplify installation, maximize reliability, and provide the winning advantage.



## CONTENTS

<b>SECTION</b>	<b>PAGE NO.</b>
<b><i>New Products</i></b> .....	<b>2-5</b>
<b><i>Redline Gauge Panels</i></b> .....	<b>6-11</b>
<b><i>Digital Gauge Panels</i></b> .....	<b>12-15</b>
<b><i>Extreme Gauge Panels</i></b> .....	<b>16-19</b>
<b><i>Standard Gauge Panels</i></b> .....	<b>20-25</b>
<b><i>Tachometers</i></b> .....	<b>26-27</b>
<b><i>New Gauges</i></b> .....	<b>28</b>
<b><i>Gauge Panel Accessories</i></b> .....	<b>29-32</b>
<b><i>Wraparound Gauge Panels</i></b> .....	<b>33</b>
<b><i>Sprint Car Gauge Panels</i></b> .....	<b>34-37</b>
<b><i>Ignition Control Panels</i></b> .....	<b>38-48</b>
<b><i>Wiring Harnesses</i></b> .....	<b>49</b>
<b><i>Ignition Control Panel Accessories</i></b> .....	<b>50-51</b>
<b><i>Wiring Harnesses</i></b> .....	<b>52-53</b>
<b><i>Ignition System Accessories</i></b> .....	<b>54-55</b>
<b><i>Battery Cable Kits</i></b> .....	<b>56</b>
<b><i>Wiring Accessories</i></b> .....	<b>57-58</b>
<b><i>Electrical System Accessories</i></b> .....	<b>59-63</b>
<b><i>Wiring Kits</i></b> .....	<b>64-67</b>
<b><i>Tire Gauges</i></b> .....	<b>68-69</b>
<b><i>Chassis Components</i></b> .....	<b>70-71</b>
<b><i>Steering Wheels</i></b> .....	<b>72</b>
<b><i>Steering Wheel Accessories</i></b> .....	<b>73</b>
<b><i>Tire Management</i></b> .....	<b>74-75</b>
<b><i>Chassis Set-Up</i></b> .....	<b>76</b>
<b><i>Carburetor Accessories</i></b> .....	<b>77</b>
<b><i>Timing Systems</i></b> .....	<b>78</b>
<b><i>Spark Plug Wires</i></b> .....	<b>79</b>
<b><i>Brake System Accessories</i></b> .....	<b>80</b>
<b><i>Cooling System Accessories</i></b> .....	<b>81</b>
<b><i>Tools</i></b> .....	<b>82-83</b>
<b><i>Safety Equipment</i></b> .....	<b>84</b>
<b><i>QuickCar Extras</i></b> .....	<b>85</b>
<b><i>Product Index</i></b> .....	<b>86-87</b>
<b><i>Part No. Page Index</i></b> .....	<b>88-89</b>



**Redline Tach Panels**

**2-1 Gauge Panel 69-2231**  
**See Page 10**



**3-1 Gauge Panel 69-2241**  
**See Page 10**

**3-1 Gauge Panel 69-3242**  
**See Page 10**



**3-1 Gauge Panel 69-3246**  
**See Page 10**

**3-1 Gauge Panel 69-3247**  
**See Page 11**



**4-1 Gauge Panel 69-4251**  
**See Page 11**

**4-1 Gauge Panel 69-4256**  
**See Page 11**



**4-1 Gauge Panel 69-4257**  
**See Page 11**



**Digital Gauge Panels**

**2-1 Gauge Panel 67-2031**  
**See Page 14**



**3-1 Gauge Panel 67-3041**  
**See Page 14**

**3-1 Gauge Panel 67-3042**  
**See Page 14**



**3-1 Gauge Panel 67-3046**  
**See Page 14**

**3-1 Gauge Panel 67-3047**  
**See Page 15**



**4-1 Gauge Panel 67-4051**  
**See Page 15**

**4-1 Gauge Panel 67-4056**  
**See Page 15**



**4-1 Gauge Panel 67-4057**  
**See Page 15**



**Small Diameter Digital Tachometer 67-001**  
**See Page 26**

**Redline Single-Recall 2-5/8" Tachometer 69-001**  
**See Page 26**



**Quick Timer 67-107**  
**See Page 28**

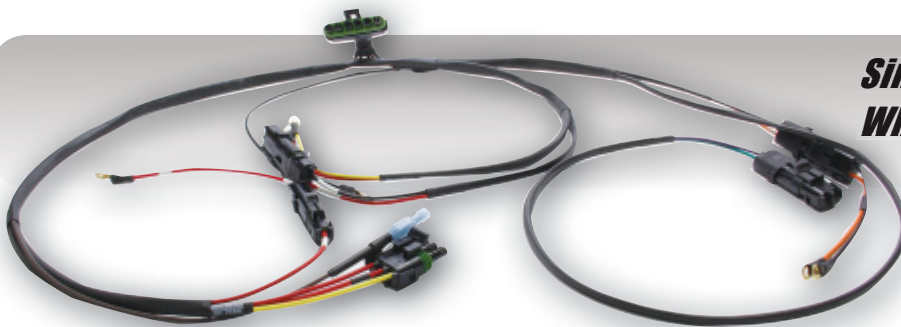
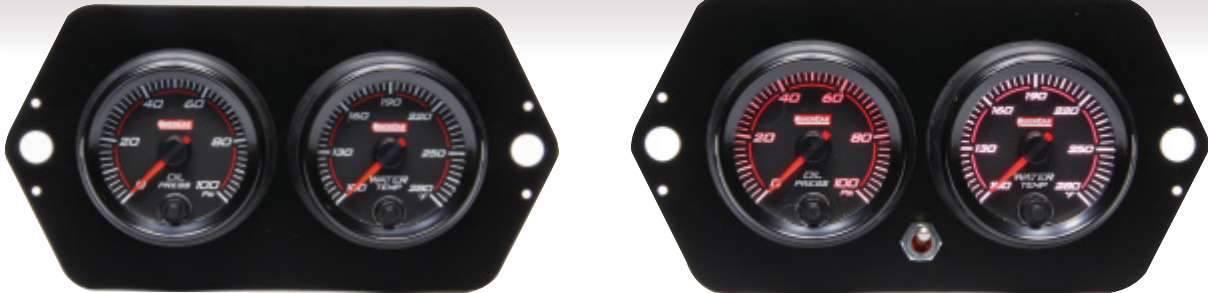
**Multi-Recall Digital Tachometer 611-106**  
**See Page 28**



**Digital Brake Bias Gauge Kit with Senders 67-101**  
**See Page 28**



**Redline Open Wheel Gauge Panels 69-2004, 69-2005 See Page 37**



**Single Ignition Harness with 3  
Wheel Brake Hookup 50-2035  
See Page 53**

**Master Disconnects  
55-030, 55-031  
See Page 61**



**Alternator Wire Kit w/ Quick Disconnect 57-105  
See Page 63**



**Alternator Wire Kit 57-106  
See Page 63**



### Redline Gauge Panels

Redline Gauge Panels are lightweight, accurate, and fitted with reliable electric stepper motor gauges. Precision 2-5/8" diameter gauges feature a programmable warning function to quickly alert the driver in the event of a problem. Panels are sold completely pre-wired for easy installation and include all necessary senders.



#### 2-Gauge Panel 69-2001

Basic panel includes gauges for oil pressure and water temperature. Panel is 7-1/4" wide x 4-1/2" high.



#### 3-Gauge Panel 69-3011

Panel includes gauges for oil pressure, water temperature, and oil temperature. Panel is 10-1/2" wide x 4-1/2" high.

#### 3-Gauge Panel 69-3012

Panel includes gauges for oil pressure, water temperature, and fuel pressure. Panel is 10-1/2" wide x 4-1/2" high.



#### 3-Gauge Panel 69-3016

Panel includes gauges for oil pressure, water temperature, and water pressure. Panel is 10-1/2" wide x 4-1/2" high.



#### 3-Gauge Panel 69-3017

Panel includes gauges for oil pressure, water temperature, and volt meter. Panel is 10-1/2" wide x 4-1/2" high.



### Firewall Sensor Junctions

Sensor junction blocks are the professional method for connecting lines to pressure transducers, a requirement of stepper motor gauges. Typically mounted to the firewall, junction blocks include 1/8" NPT threads to accept pressure transducers on the interior side of firewall, while pressure lines are then connected adjacently on the engine side. Manufactured from black anodized billet aluminum, blocks are offered with or without accessory wiring holes.

Part No.	Description
63-120	Two-Terminal Junction
63-121	Two-Terminal Junction with Single Accessory Hole
63-130	Three-Terminal Junction
63-132	Three-Terminal Junction with Two Accessory Holes



63-120



63-121



63-130



63-132

## 4-Gauge Panel 69-4021

Panel includes gauges for oil pressure, water temperature, oil temperature, and fuel pressure. Panel is 13-5/8" wide x 4-1/2" high.



## 4-Gauge Panel 69-4026

Panel includes gauges for oil pressure, water temperature, fuel pressure, and water pressure. Panel is 13-5/8" wide x 4-1/2" high.

## 4-Gauge Panel 69-4027

Panel includes gauges for oil pressure, water temperature, oil temperature, and volt meter. Panel is 13-5/8" wide x 4-1/2" high.



## 5-Gauge Panel 69-5036

Panel includes gauges for oil pressure, water temperature, oil temperature, fuel pressure, and water pressure. Panel is 17" wide x 4-1/2" high.

## 5-Gauge Panel 69-5037

Panel includes gauges for oil pressure, water temperature, oil temperature, fuel pressure, and volt meter. Panel is 17" wide x 4-1/2" high.



## 2-5/8" Redline Gauges

May also be purchased separately. Senders and pressure lines not included.



**69-000**  
Fuel Pressure  
0-15 PSI



**69-003**  
Oil Pressure  
0-100 PSI



**69-006**  
Water Temperature  
100°-280°F



**69-007**  
Volt Meter  
8-18 Volts



**69-008**  
Water Pressure  
0-60 PSI



**69-009**  
Oil Temperature  
140°-320° F

## Replacement Senders



Part No.	Description
63-225	2-Wire Temp. Sender
63-230	Oil Pressure/ Water Pressure Sender
63-240	Fuel Pressure Sender



**REDLINE Gauge Tach Panels With Multi-Recall Tachometer**

Panels combine advanced, electric stepper motor 2-5/8" diameter gauges with the benefits of a Redline 3" diameter multi-recall tachometer. Multi-recall, 10,000 RPM tachometer allows recalling the four highest (straightaway) and four lower (corner) RPM readings to help determine proper gearing. Panels are sold completely pre-wired for easy installation and include all necessary senders.

**2-1 Gauge Panel 69-2031**

Basic panel includes gauges for oil pressure and water temperature along with a Redline multi-recall tachometer. Panel is 10-3/4" wide x 4-1/2" high.

**3-1 Gauge Panel 69-3041**

Panel combines oil pressure, water temperature, and oil temperature gauges with a Redline multi-recall tachometer. Measures 13-7/8" wide x 4-1/2" high.

**3-1 Gauge Panel 69-3042**

Panel includes oil pressure, water temperature, and fuel pressure gauges, with a Redline multi-recall tachometer. Panel is 13-7/8" wide x 4-1/2" high.

**3-1 Gauge Panel 69-3046**

Panel includes oil pressure, water temperature, and water pressure gauges combined with a Redline multi-recall tachometer. Panel is 13-7/8" wide x 4-1/2" high.







### 3-1 Gauge Panel 69-3047

Panel includes oil pressure, water temperature, and volt meter gauges, with a Redline multi-recall tachometer. Panel is 13-7/8" wide x 4-1/2" high.

### 4-1 Gauge Panel 69-4051

Panel includes oil pressure, water temperature, oil temperature, and fuel pressure gauges along with a Redline multi-recall tachometer. Panel is 17" wide x 4-1/2" high.



### 4-1 Gauge Panel 69-4056

Panel combines oil pressure, water temperature, fuel pressure and water pressure gauges with a Redline multi-recall tachometer. Panel is 17" wide x 4-1/2" high.

### 4-1 Gauge Panel 69-4057

Panel includes oil pressure, water temperature, oil temperature, and volt meter gauges, with a Redline multi-recall tachometer. Panel is 17" wide x 4-1/2" high.



**REDLINE Gauge Tach Panels With Recall Tachometer**

Panels combine advanced, electric stepper motor 2-5/8" diameter gauges with the benefits of a Redline 2-5/8" single recall tachometer. Single recall, 10,000 RPM tachometer allows recalling the highest RPM of any given session to help determine proper gearing. Panels are sold completely pre-wired for easy installation and include all necessary senders.

**2-1 Gauge Panel 69-2231**

Panel is fitted with oil pressure, water temperature, and tachometer gauges. Panel is 10-3/4" wide x 4-1/2" high

**3-1 Gauge Panel 69-2241**

Panel is fitted with oil pressure, water temperature, oil temperature, and tachometer gauges. Panel is 13-7/8" wide x 4-1/2" high.

**3-1 Gauge Panel 69-3242**

Panel is fitted with oil pressure, water temperature, fuel pressure, and tachometer gauges. Panel is 13-7/8" wide x 4-1/2" high.

**3-1 Gauge Panel 69-3246**

Panel is fitted with oil pressure, water temperature, water pressure, and tachometer gauges. Panel is 13-7/8" wide x 4-1/2" high.



**NEW!**



### 3-1 Gauge Panel 69-3247

Panel is fitted with oil pressure, water temperature, volt meter, and tachometer gauges. Panel is 13-7/8" wide x 4-1/2" high.

**NEW!**

### 4-1 Gauge Panel 69-4251

Panel is fitted with oil pressure, water temperature, oil pressure, fuel pressure, and tachometer gauges. Panel is 17" wide x 4-1/2" high.



**NEW!**

### 4-1 Gauge Panel 69-4256

Panel is fitted with oil pressure, water temperature, fuel pressure, water pressure, and tachometer gauges. Panel is 17" wide x 4-1/2" high.



### 4-1 Gauge Panel 69-4257

Panel is fitted with oil pressure, water temperature, oil temperature, volt meter, and tachometer gauges. Panel is 17" wide x 4-1/2" high.





**Digital Gauge Panels**

Ultra-lightweight gauge panels are fit with precise 2-1/16" diameter digital electronic gauges. Gauges include a digital blue LED readout and graduated scale for increased readability. Built-in warning light functions are adjustable with the touch of a finger, causing the lighting to flash in the event of a problem, instantly alerting the driver. Panels are sold completely pre-wired for easy installation, and include all necessary transducers and senders.

**2-Gauge Panel 67-2001**

Basic digital panel includes oil pressure and water temperature gauges. Panel is 6-1/16" wide x 3-5/8" high.

**3-Gauge Panel 67-3011**

Assembled with oil pressure, water temperature, and oil temperature gauges, panel is 8-1/2" wide x 3-5/8" high.

**3-Gauge Panel 67-3012**

Panel includes gauges for oil pressure, water temperature, and fuel pressure. Panel is 8-1/2" wide x 3-5/8" high.

**3-Gauge Panel 67-3016**

Panel is fitted with oil pressure, water temperature, and water pressure gauges. Panel is 8-1/2" wide x 3-5/8" high.

**3-Gauge Panel 67-3017**

Fitted with gauges for oil pressure, water temperature, and volt meter, panel is 8-1/2" wide x 3-5/8" high.

**4-Gauge Panel 67-4021**

Panel includes oil pressure, water temperature, oil temperature, and fuel pressure gauges. Panel is 11" wide x 3-5/8" high.



# DIGITAL GAUGE PANELS



## 4-Gauge Panel 67-4026

Panel is complete with oil pressure, water temperature, fuel pressure, and water pressure gauges. Panel is 11" wide x 3-5/8" high.

## 4-Gauge Panel 67-4027

Panel includes oil pressure, water temperature, oil temperature, and volt meter gauges. Panel is 13-1/2" wide x 3-5/8" high.



## 5-Gauge Panel 67-5036

Complete with gauges for oil pressure, water temperature, oil temperature, fuel pressure, and water pressure. Panel is 13-1/2" wide x 3-5/8" high.

## 5-Gauge Panel 67-5037

Panel includes oil pressure, water temperature, oil temperature, fuel pressure, and volt meter gauges. Panel is 13-1/2" wide x 3-5/8" high.



## 2-1/16" Digital Gauges

May also be purchased separately. Senders, transducers, and pressure lines not included.



**67-000**  
Fuel Pressure  
0-15 PSI



**67-001**  
Tachometer  
10000 RPM



**67-003**  
Oil Pressure  
0-100 PSI



**67-006**  
Water Temperature  
100°F - 280°F



**67-007**  
Volt Meter  
8-18 Volts

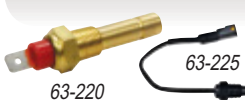


**67-008**  
Water Pressure  
0-100 PSI



**67-009**  
Oil Temperature  
100°F - 320°F

## Replacement Senders



63-220



63-230



63-240

Part No.	Description
63-220	1-Wire Temp Sender
63-225	2-Wire Temp Sender
63-230	Oil Pressure/Water Pressure Sender
63-240	Fuel Pressure Sender



**Digital Tach Panels**

Ultra-lightweight gauge panels are fit with precision, 2-1/16" diameter digital electronic gauges. Gauges include a digital blue LED readout and graduated scale for increased readability. Built-in warning light functions are adjustable with the touch of a finger, causing the lighting to flash in the event of a problem, instantly alerting the driver. Panels are sold completely pre-wired for easy installation, and include all necessary transducers and senders.

**2-1 Gauge Panel 67-2031**

Basic digital panel includes oil pressure, water temperature, and tachometer gauges. Panel is 8-1/2" wide x 3-5/8" high.

**3-1 Gauge Panel 67-3041**

Assembled with oil pressure, water temperature, oil temperature, and tachometer gauges. Panel is 13-1/2" wide x 3-5/8" high.

**3-1 Gauge Panel 67-3042**

Panel includes gauges for oil pressure, water temperature, fuel pressure, and tachometer. Panel is 13-1/2" wide x 3-5/8" high.

**3-1 Gauge Panel 67-3046**

Panel is fitted with oil pressure, water temperature, water pressure, and tachometer gauges. Panel is 13-1/2" wide x 3-5/8" high.





**NEW!**



### 3-1 Gauge Panel 67-3047

Basic digital panel includes oil pressure, water temperature, voltage meter, and tachometer gauges. Panel is 13-1/2" wide x 3-5/8" high.

**NEW!**

### 4-1 Gauge Panel 67-4051

Assembled with oil pressure, water temperature, oil temperature, fuel pressure, and tachometer gauges. Panel is 13-1/2" wide x 3-5/8" high.



**NEW!**

### 4-1 Gauge Panel 67-4056

Panel includes gauges for oil pressure, water temperature, fuel pressure, water pressure, and tachometer. Panel is 13-1/2" wide x 3-5/8" high.



### 4-1 Gauge Panel 67-4057

Panel is fitted with oil pressure, water temperature, oil temperature, voltage meter, and tachometer gauges. Panel is 13-1/2" wide x 3-5/8" high.



**Extreme Gauge Panels**

Extreme Gauge Panels feature lightweight, 2-5/8" diameter white-face mechanical gauges with bright red pointers, mounted in gloss black-finished panels. Panels are pre-wired, ready to install, and include necessary senders. No external warning lights are needed; gauges use LED lights and switch automatically from white to designated color when a problem arises.

**2-Gauge Panel 61-7001**

Basic 7-1/4" wide x 4-1/2" high panel includes gauges for oil pressure and water temperature.

**3-Gauge Panel 61-7011**

Panel is 10-1/2" wide x 4-1/2" high and features oil pressure, water temperature, and oil temperature gauges.

**3-Gauge Panel 61-7012**

Panel is complete with oil pressure, water temperature, and fuel pressure gauges, and is 10-1/2" wide x 4-1/2" high.

**3-Gauge Panel 61-7017**

Panel is complete with oil pressure, water temperature, and volt meter gauges. Panel is 10-1/2" wide x 4-1/2" high.

**4-Gauge Panel 61-7021**

Panel is 13-5/8" wide x 4-1/2" high, and includes oil pressure, water temperature, oil temperature, and fuel pressure gauges.

**4-Gauge Panel 61-7026**

Panel is 13-5/8" wide x 4-1/2" high, and includes oil pressure, water temperature, fuel pressure, and water pressure gauges.



## Extreme Gauge Panels With LED Digital Tachometer

Panels feature the addition of the Extreme LED Digital Tachometer, designed for use as an RPM indicator or shift light. RPM settings are adjusted by simply touching the lens with a finger. Fully assembled and pre-wired, panels include all necessary senders. May be assembled with any combination of gauges; please call with specific requirements.



### 2-1 Gauge Panel 61-7031

2-1 gauge panel includes gauges for oil pressure and water temperature, and the Extreme LED Digital Tachometer. Panel is 10-1/2" wide x 4-1/2" high.

### 3-1 Gauge Panel 61-7041

3-1 gauge panel includes oil pressure, water temperature, and oil temperature gauges, and the Extreme LED Digital Tachometer. Panel is 13-5/8" wide x 4-1/2" high.



### 3-1 Gauge Panel 61-7042

3-1 gauge panel includes oil pressure, water temperature, and fuel pressure gauges, and the Extreme LED Digital Tachometer. Panel is 13-5/8" wide x 4-1/2" high.

### 4-1 Gauge Panel 61-7051

4-1 gauge panel includes oil pressure, water temperature, oil temperature, and fuel pressure gauges, and the Extreme LED Digital Tachometer. Panel is 17" wide x 4-1/2" high.



### 2-5/8" Extreme Gauges

May also be purchased separately. Sold complete with 12-volt lighting. Senders and pressure lines not included.



- |                           |                           |                                      |                          |                             |                                |                             |
|---------------------------|---------------------------|--------------------------------------|--------------------------|-----------------------------|--------------------------------|-----------------------------|
| <b>611-7000</b>           | <b>611-7003</b>           | <b>611-7006</b>                      | <b>611-7007</b>          | <b>611-7008</b>             | <b>611-7009</b>                | <b>611-7010</b>             |
| Fuel Pressure<br>0-15 PSI | Oil Pressure<br>0-100 PSI | Water<br>Temperature<br>100°F-280°F. | Volt Meter<br>8-18 Volts | Water Pressure<br>0-100 PSI | Oil Temperature<br>100°F-320°F | Digital Tach<br>0-18000 RPM |

### Replacement Senders



61-730

61-735

61-740

61-750

Part No.	Description
61-730	Fuel Pressure Sender 4 PSI
61-735	Oil Pressure Sender 20 PSI
61-740	Water Temperature Switch 1/2 NPT
61-750	Oil Temperature Sender 280°F



**Extreme Gauge Panels With 5" Tachometer**

Panels feature the addition of the 5" 10,000 RPM recall Tachometer, Fully assembled and pre-wired, panels include all necessary senders. May be assembled with any combination of gauges; please call with specific requirements.

**2-1 Gauge Panel 61-7731**

Panel includes a 5" QuickCar 10,000 RPM recall tachometer (611-6001), 2-5/8" mechanical oil includes pressure and water temperature gauges along with internal warning lights. Panel measures 11-7/8" wide x 4-1/2" high.

**3-1 Gauge Panel 61-7741**

This panel features a 5" QuickCar 10,000 RPM recall tachometer (611-6001), 2-5/8" mechanical oil pressure, water temperature, and oil temperature gauges, along with internal warning lights. Panel measures 15-1/8" wide x 4-1/2" tall.

**3-1 Gauge Panel 61-7742**

This panel includes a 5" QuickCar 10,000 RPM recall tachometer (611-6001), 2-5/8" mechanical oil pressure, water temperature, and fuel pressure gauges, along with internal warning lights. Panel measures 15-1/8" wide x 4-1/2" tall.

**4-1 Gauge Panel 61-7751**

Panel includes a 5" QuickCar 10,000 RPM recall tachometer (611-6001), 2-5/8" mechanical oil pressure, water temperature, oil temperature, and fuel pressure gauges, along with internal warning lights. Panel measures 18-5/16" wide x 4-1/2" tall.



## Extreme Gauge Panels With 3-3/8" Tachometer

Panels feature the addition of the 3-3/8" 10,000 RPM recall Tachometer, Fully assembled and pre-wired, panels include all necessary senders. May be assembled with any combination of gauges; please call with specific requirements.

### 2-1 Gauge Panel 61-77313

Panel includes a 3-3/8" QuickCar 10,000 RPM recall tachometer (611-6002), 2-5/8" mechanical oil pressure and water temperature gauges, and internal warning lights. Panel measures 11-7/8" wide x 4-1/2" high.



### 3-1 Gauge Panel 61-7413

This panel features a 3-3/8" QuickCar 10,000 RPM recall tachometer (611-6002), 2-5/8" mechanical oil pressure, water temperature, and oil temperature gauges, along with internal warning lights. Panel measures 15-1/8" wide x 4-1/2" tall.

### 3-1 Gauge Panel 61-77423

This panel includes a 3-3/8" QuickCar 10,000 RPM recall tachometer (611-6002), 2-5/8" mechanical oil pressure, water temperature, and fuel pressure gauges, along with internal warning lights. Panel measures 15-1/8" wide x 4-1/2" tall.



### 4-1 Gauge Panel 61-77513

Panel includes a 3-3/8" QuickCar 10,000 RPM recall tachometer (611-6002), 2-5/8" mechanical oil pressure, water temperature, oil temperature, and fuel pressure gauges, along with internal warning lights. Panel measures 18-5/16" wide x 4-1/2" tall.





### Standard Gauge Panels

Standard gauge panels feature quality QuickCar 2-5/8" diameter mechanical gauges and accompanying warning lights. Panels are sold completely pre-wired for easy installation and include all necessary senders. All gauges in standard panels feature LED lighting.

#### 2-Gauge Panel 61-6001

Basic panel includes gauges for oil pressure and water temperature, and accompanying warning lights. Panel is 7-1/4" wide x 4-1/2" high.



#### 3-Gauge Panel 61-6011

Panel includes gauges for oil pressure, water temperature, and oil temperature, and accompanying warning lights. Panel is 10-1/2" wide x 4-1/2" high.

#### 3-Gauge Panel 61-6012

Panel includes gauges for oil pressure, water temperature, and fuel pressure, and accompanying warning lights. Panel is 10-1/2" wide x 4-1/2" high.



#### 4-Gauge Panel 61-6021

Panel features gauges for oil pressure, water temperature, oil temperature, and fuel pressure, and accompanying warning lights. Panel is 13-5/8" wide x 4-1/2" high.

### Replacement Senders



Part No.	Description
61-730	Fuel Pressure Sender 4 PSI
61-735	Oil Pressure Sender 20 PSI
61-740	Water Temperature Switch 1/2 NPT
61-750	Oil Temperature Sender 280°F



# STANDARD GAUGE PANELS



## Standard Gauge Panels Cont. (Black)

### 2-Gauge Panel 61-6701

Basic panel includes gauges for oil pressure and water temperature, and accompanying warning lights. Panel is 7-1/4" wide x 4-1/2" high.



### 3-Gauge Panel 61-6711

Panel includes gauges for oil pressure, water temperature, and oil temperature, and accompanying warning lights. Panel is 10-1/2" wide x 4-1/2" high.

### 3-Gauge Panel 61-6712

Panel includes gauges for oil pressure, water temperature, and fuel pressure, and accompanying warning lights. Panel is 10-1/2" wide x 4-1/2" high.



### 3-Gauge Panel 61-6717

Panel is complete with oil pressure, water temperature, and volt meter gauges, and accompanying warning lights. Panel is 10-1/2" wide x 4-1/2" high.

### 4-Gauge Panel 61-6721

Panel features gauges for oil pressure, water temperature, oil temperature, and fuel pressure, and accompanying warning lights. Panel is 13-5/8" wide x 4-1/2" high.



### Standard 2-5/8" Gauges

May also be purchased separately. Sold complete with 12-volt LED lighting. Senders and pressure lines not included.



- |                           |                           |                                    |                     |                                  |
|---------------------------|---------------------------|------------------------------------|---------------------|----------------------------------|
| <b>611-6000</b>           | <b>611-6003</b>           | <b>611-6006</b>                    | <b>611-6007</b>     | <b>611-6009</b>                  |
| Fuel Pressure<br>0-15 PSI | Oil Pressure<br>0-100 PSI | Water Temperature<br>100°F - 280°F | Volts<br>8-18 Volts | Oil Temperature<br>100°F - 340°F |

**Standard Gauge Panels With 5" Tachometer****2-1 Gauge Panel 61-6031**

Basic 2-1 panel includes a 5" diameter QuickCar 10,000 RPM recall tachometer, 2-5/8" diameter mechanical gauges for oil pressure and water temperature, and accompanying warning lights. Panel is 11-7/8" wide x 4-1/2" high.

**3-1 Gauge Panel 61-6041**

Panel incorporates a 5" diameter QuickCar 10,000 RPM recall tachometer, 2-5/8" diameter mechanical gauges for oil pressure, water temperature, and oil temperature, and accompanying warning lights. Panel is 15-1/8" wide x 4-1/2" high.

**3-1 Gauge Panel 61-6042**

Popular panel uses a 5" diameter QuickCar 10,000 RPM recall tachometer, 2-5/8" diameter mechanical gauges for oil pressure, water temperature, and fuel pressure, and accompanying warning lights. Panel is 15-1/8" wide x 4-1/2" high.

**4-1 Gauge Panel 61-6051**

Panel features QuickCar 5" diameter, 10,000 RPM recall tachometer, 2-5/8" diameter mechanical gauges for oil pressure, water temperature, oil temperature, and fuel pressure, and accompanying warning lights. Panel is 18-3/8" wide x 4-1/2" high.





## Standard Gauge Panels With 5" Tachometer Cont. (Black)



### 2-1 Gauge Panel **61-6731**

Basic 2-1 panel includes a 5" diameter QuickCar 10,000 RPM recall tachometer, 2-5/8" diameter mechanical gauges for oil pressure and water temperature, and accompanying warning lights. Panel is 11-7/8" wide x 4-1/2" high.

### 3-1 Gauge Panel **61-6741**

Panel incorporates a 5" diameter QuickCar 10,000 RPM recall tachometer, 2-5/8" diameter mechanical gauges for oil pressure, water temperature, and oil temperature, and accompanying warning lights. Panel is 15-1/8" wide x 4-1/2" high.



### 3-1 Gauge Panel **61-6742**

Popular panel uses a 5" diameter QuickCar 10,000 RPM recall tachometer, 2-5/8" diameter mechanical gauges for oil pressure, water temperature, and fuel pressure, and accompanying warning lights. Panel is 15-1/8" wide x 4-1/2" high.



### 4-1 Gauge Panel **61-6751**

Panel features QuickCar 5" diameter, 10,000 RPM recall tachometer, 2-5/8" diameter mechanical gauges for oil pressure, water temperature, oil temperature, and fuel pressure, and accompanying warning lights. Panel is 18-3/8" wide x 4-1/2" high.





**Standard Gauge Panels With 3-3/8" Tachometers****2-1 Gauge Panel 61-60313**

Basic panel includes a QuickCar 3-3/8" diameter 10,000 RPM remote recall tachometer, 2-5/8" diameter mechanical gauges for oil pressure and water temperature, and accompanying warning lights. Panel is 11-7/8" wide x 4-1/2" high.

**3-1 Gauge Panel 61-60413**

Panel incorporates a QuickCar 3-3/8" diameter 10,000 RPM remote recall tachometer, 2-5/8" diameter mechanical gauges for oil pressure, water temperature, and oil temperature, and accompanying warning lights. Panel is 15-1/8" wide x 4-1/2" high.

**3-1 Gauge Panel 61-60423**

Panel features a QuickCar 3-3/8" diameter 10,000 RPM remote recall tachometer, 2-5/8" diameter mechanical gauges for oil pressure, water temperature, and fuel pressure, and accompanying warning lights. Panel is 15-1/8" wide x 4-1/2" high.

**4-1 Gauge Panel 61-60513**

Panel combines a QuickCar 3-3/8" diameter 10,000 RPM remote recall tachometer, 2-5/8" diameter mechanical gauges for oil pressure, water temperature, oil temperature, and fuel pressure, and accompanying warning lights. Panel is 18-3/8" wide x 4-1/2" high.



## STANDARD GAUGE PANELS



### Standard Gauge Panels With 3-3/8" Tachometers Cont. (Black)

#### 2-1 Gauge Panel 61-67313

Panel includes a QuickCar 3-3/8" diameter 10,000 RPM remote recall tachometer, 2-5/8" diameter mechanical gauges for oil pressure, and water temperature, and accompanying warning lights. Panel is 11-7/8" wide x 4-1/2" high.



#### 3-1 Gauge Panel 61-67413

Panel incorporates a QuickCar 3-3/8" diameter 10,000 RPM remote recall tachometer, 2-5/8" diameter mechanical gauges for oil pressure, water temperature, and oil temperature, and accompanying warning lights. Panel is 15-1/8" wide x 4-1/2" high.



#### 3-1 Gauge Panel 61-67423

Panel features a QuickCar 3-3/8" diameter 10,000 RPM remote recall tachometer, 2-5/8" diameter mechanical gauges for oil pressure, water temperature, and fuel pressure, and accompanying warning lights. Panel is 15-1/8" wide x 4-1/2" high.



#### 4-1 Gauge Panel 61-67513

Panel combines a QuickCar 3-3/8" diameter 10,000 RPM remote recall tachometer, 2-5/8" diameter mechanical gauges for oil pressure, water temperature, oil temperature, and fuel pressure, and accompanying warning lights. Panel is 18-3/8" wide x 4-1/2" high.





QuickCar tachometers and speedometers are used in the assembly of our quality-built, ready-to-install panels, and are also offered separately.

## Extreme LED Digital Tachometer 611-7010

Digital tachometer's compact, 2-5/8" diameter allows it to be installed into any Extreme gauge panel. Tachometer may be used simply as an RPM indicator, or as a shift light. RPM settings are adjusted by simply touching the lens with a finger. Unit also includes a recall feature, which retrieves the highest RPM attained during the race.



Shift Lights On



## Tachometer With Memory 611-6001

A true American-made, 5" diameter tachometer that is affordable, dependable, and accurate. Tachometer has a silver dial face with bright red pointer, has a 0-10,000 RPM range, and popular memory that recalls the highest RPM attained during the last race. Unit is fully analog, with no microprocessor, making it legal in all sanctioning bodies. Now features bright white LED lighting.

## Tachometer With Remote Recall 611-6002

Made in the USA, 3-3/8" diameter aluminum-cased tachometer includes a 0-10,000 RPM range. Designed for in-dash mounting, tachometer includes a silver dial face with bright red pointer, and includes a remote recall, which displays the highest RPM attained during the last race. Analog rather than microprocessor design allows legality in all sanctioning bodies. Now features bright white LED lighting.



611-096



**NEW!**



## Small Diameter Digital Tachometer 67-001

This lightweight 2-1/16" diameter tachometer features a bright blue, easy-to-read digital display. Designed with a 0-10,000 RPM range, high-RPM recall, tachometer is adaptable to numerous engine/cylinder configurations.

**NEW!**



## Redline Single-Recall 2-5/8" Tachometer 69-001

Compact 2-5/8" tachometer reads up to 10,000 RPM and has a single high-RPM recall. Small diameter makes it easy to install in tight locations. Tachometer also features an adjustable warning/shift light that can be used, if desired, and will work with numerous engine/cylinder combinations.



## Redline Multi-Recall Tachometers

Precise, 3" diameter tachometers combine accuracy and reliability with added multi-recall features. The built-in multi-recall function allows recalling the four highest (straightaway) and four lower (corner) RPM readings to help determine proper gearing, while the programmable shift light aids in performing timely shifts, when desired. Bright, LED-lit 0-10,000 RPM tachs are offered with black or white dial faces.

Part No.	Description
63-001	Multi-Recall Tachometer (White)
63-002	Multi-Recall Tachometer (Black)



63-001



63-002



611-099



611-100

## QuickTach LCD Recall Tachometers

Compact, yet accurate QuickTach features a 1-3/4" wide x 3/4" high LCD digital display of engine RPM, and can recall the highest RPM attained during the last race. RPM recall is automatically displayed for up to 15 minutes once the engine is shut down, and clears when the engine is re-started. A reset button allows for occasions when it is desired to reset the unit during racing. Lightweight, aluminum cased unit is waterproof and is self-powered by a 9-volt battery. Not for use with magneto.

Part No.	Description
611-099	QuickTach, White/Red With Checkered Flag
611-100	QuickTach, Black



## Redline GPS Speedometer 63-300

This 3-3/8" diameter GPS speedometer features a black, easy-to-read 0-120 MPH analog face with digital LCD display odometer and compass.

The GPS receives satellite updates 10 times per second, assuring speed accuracy of +/- 3 MPH. Kit includes GPS receiver with a four-foot cable and all wiring needed for installation.

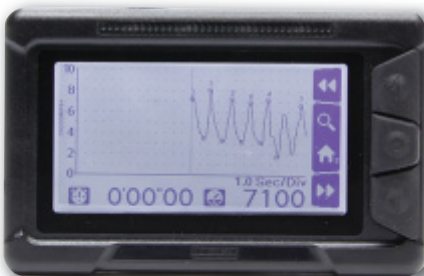


**Quick Timer 67-107**

GPS sensor-equipped 2-1/16" digital gauge measures if a completed lap was faster or slower than the previous lap. Faster? Green light and the time reduction is shown in the LED display. Slower? Red light, and the display shows just how much slower. The driver can experiment with different lines on the track and get immediate feedback on lap times. Great for road courses, circle track, or any kind of racing that crosses the same starting point each lap.

**Multi-Recall Digital Tachometer 611-106 NEW!**

Innovative tachometer combines the benefits of a compact, 4" wide x 2-1/2" high size with an easy-to-read, digital backlit display and a programmable RPM warning/shift light. Once the engine is shut off, the tach displays the (10) highest and (10) lowest RPM readings from the previous race, aiding car set-up. An RPM graph allows scrolling, choosing and replaying all RPM events as desired. Compatible with multiple cylinder engines.



67-015



63-270



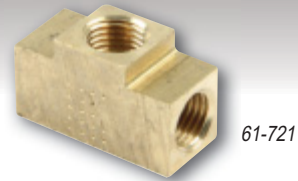
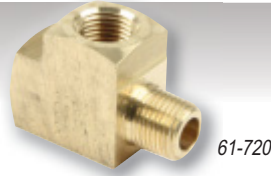
Gauge Pod Not Included

**Digital Brake Bias Gauge Replacement Parts:**  
**Brake Bias Gauge Only 67-015**  
**Replacement 1600 PSI Sender (each) 63-270**

## Brass 1/8" NPT Tee Fittings

Required when wiring in warning lights.

Part No.	Description
61-720	1/8" NPT "T"-Fitting, (2) Female Ports, (1) Male Port
61-721	1/8" NPT "T"-Fitting, (3) Female Ports



## Temperature Adapters

Used to connect mechanical water or oil temperature gauges to engine.

Part No.	Description
611-900	1/2" NPT Brass Adapter
611-901	1/2" NPT Aluminum Adapter
611-902	3/8" NPT Aluminum Adapter
611-903*	3/8" NPT Extended Aluminum Adapter
611-904	1/8" NPT to 1/2" NPT Brass Adapter
611-905	1/8" NPT to 3/8" NPT Brass Adapter

\* Note: For use on applications where the temperature probe contacts the inside of the cylinder head before tightening. Typically required for most aluminum heads.

## LED Red Light Strip 61-790

Red LED 18" long LED strip may be trimmed to length, and is typically mounted to the dashboard and wired to a warning light, quickly alerting the driver in the event of a problem. Sold complete with necessary wiring.



Example of LED Red Light Strip, Gauge Panel Not Included

## Pressure and Temperature Switches

### Fuel Pressure Switch 61-730

Activates warning light when fuel pressure drops below 4 PSI. Switch has 1/8" NPT.



### Oil Pressure Switches

Switches are offered to activate oil pressure warning light at 20 or 30 PSI. Switches have 1/8" NPT.

Part No.	Description
61-733	Oil Pressure Switch, Activates At 30 PSI
61-735	Oil Pressure Switch, Activates At 20 PSI



### Water Temperature Switches

Activates warning light when water temperature rises to 235°F. Offered with 3/8" or 1/2" NPT.

Part No.	Description
61-740	Water Temperature Switch, 1/2" NPT
61-748	Water Temperature Switch, 3/8" NPT



### Oil Temperature Switch 61-750

Activates warning light when oil temperature rises above 280°F. Has a 1/2" NPT thread.

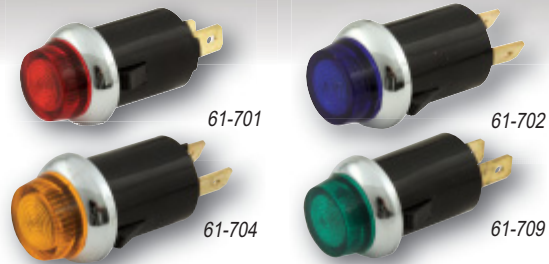




## Replacement Warning Lights

Replacement lights are designed for QuickCar panels and include snap-in design. Lights feature a more durable, non-brittle one-piece body.

Part No.	Description
61-701	Red
61-702	Blue
61-704	Amber
61-709	Green
61-706	4-Pc. Warning Light Kit Includes (1) red, (1) blue, (1) amber and (1) green warning light.



## LED Bulbs

LED bulbs fit into the back lighting of standard QuickCar gauges, offering bright, reliable illumination for improved gauge readability, while using less power. Perfect for 16V applications.

Part No.	Description
61-698	White LED Bulbs, 4-Pack
61-699	White LED Bulb, Each
61-691	Red LED Bulbs, Pair
61-692	Blue LED Bulbs, Pair
61-693	Amber LED Bulbs, Pair
61-694	Green LED Bulbs, Pair



## Fuel Pressure Isolator 61-300

Specialized isolator eliminates the hazards associated with driver's compartment-mounted fuel pressure gauges. Typically mounted to the engine side firewall, isolator is plumbed with the pressure source on the inlet side and an anti-freeze/water mix on the outlet, which connects to the gauge. Compatible with gasoline, alcohol, or methanol fuels, isolator is manufactured from black anodized, billet 6061-T6 aluminum for durability. Capable of monitoring pressures up to 80 PSI, unit is sold complete with -4AN adapter fittings, mounting bracket, and necessary hardware.

## 1" and 1-1/4" Hose Adapters

These adapters are designed to splice into radiator hose and allow a temp sender or bleeder valve to be installed where space is an issue.

Part No.	Description
61-756	1" Hose with 1/8" NPT port.
61-757	1-1/4" Hose with 1/2" NPT port.





611-9015



611-90100

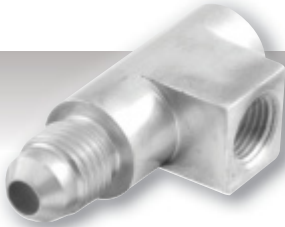
## Mini Fuel Pressure Gauges

Ideally mounted to fuel pressure regulators or fuel logs, mini 1-1/2" diameter fuel pressure gauges are liquid-filled for added durability.

Part No.	Description
611-9015	0-15 PSI
611-90100	0-100 PSI

## Oil Temperature Manifold 61-755

Installed in-line to allow monitoring engine oil temperature, manifold is constructed from rigid billet aluminum and black anodized for corrosion resistance. Manifold includes -10AN O-ring boss inlet and outlet ports, and standard temperature gauge port.



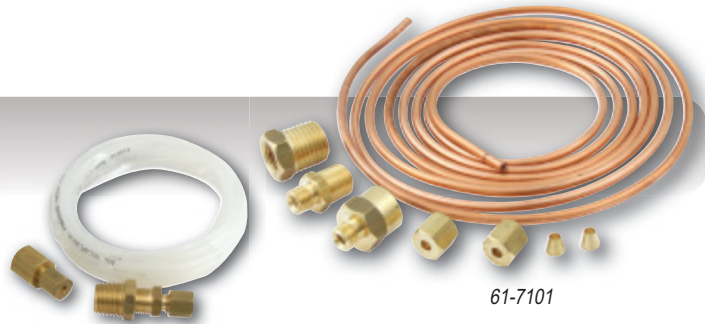
## Aluminum Tee Fitting 61-722

Fitting includes a 1/8" NPT port to -4AN with 1/8" NPT side port for oil pressure sensor.

## 1/8" NPT Pressure Gauge Line Kits

Designed to connect mechanical pressure gauges, kits are offered with copper or nylon tubing. Each kit is complete with required fittings.

Part No.	Description
61-710	Nylon Gauge Line Kit
61-7101	Copper Gauge Line Kit



61-710

61-7101



## Pressure Gauge Line Kits

Each kit includes two 1/8" NPT to -4AN adapter fittings and -4AN stainless steel braided line to hook-up pressure gauges.

Part No.	Description
61-71012	12"
61-71024	24"
61-71036	36"
61-71048	48"
61-71060	60"
61-724	1/8" NPT Female To -4AN Male Gauge Adapter (Each)
61-725	1/8" NPT Male To -4AN Male Gauge Adapter (Each)



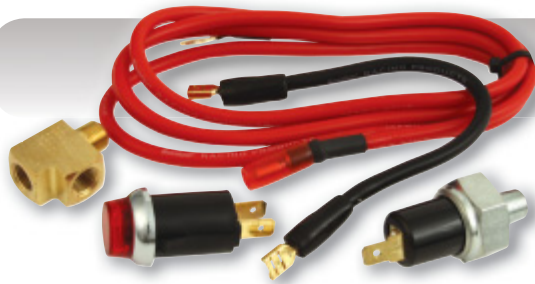
61-724



61-725

## Quick-Lite Warning Light Kits

Warning light kits are designed to immediately alert the driver of any engine problems. Each kit is sold complete with warning light, sending switch, and wiring.



### Oil Pressure Kit 61-711

Kit includes a red warning light, pressure sending unit that activates the warning light if oil pressure drops below 20 PSI, brass in-line tee for oil pressure line, and necessary pre-terminated wiring.



### Water Temperature Kit 61-712

Kit includes a blue warning light, temperature sending unit that activates the warning light if water temperature exceeds 235°F, and necessary pre-terminated wiring.

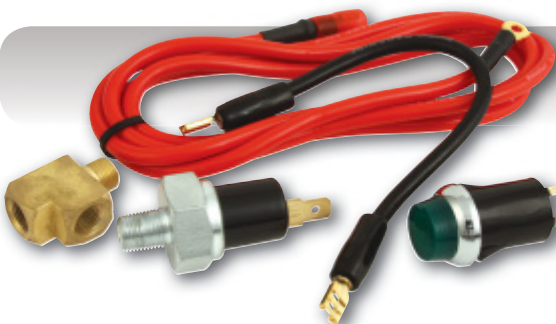


### Water Pressure Kit 61-713

Kit includes a blue warning light, pressure sending unit that activates the warning light if water pressure drops below 4 PSI, and necessary pre-terminated wiring. Kit provides instant notice of coolant pressure loss such as a blown hose, radiator, or head gasket leakage. Sending unit may be installed virtually anywhere in the cooling system.

### Oil Temperature Kit 61-714

Kit includes an amber warning light, temperature sending unit that activates the warning light if oil temperature exceeds 280°F, and necessary pre-terminated wiring.



### Fuel Pressure Kit 61-719

Kit includes a green warning light, pressure sending unit that activates the warning light if fuel pressure drops below 4 PSI, brass in-line tee, and necessary pre-terminated wiring.

### Water Pressure Kit With 2-1/16" Dia. Gauge 61-716

Keep track of spikes or loss of cooling system pressure that can cause catastrophic engine failure, if it goes unnoticed. Kit is similar to 61-713, but with the addition of a QuickCar 2-1/16" diameter mechanical 0-35 PSI water pressure gauge. Also includes blue warning light, pressure sending unit that activates the warning light if water pressure drops below 4 PSI, brass in-line tee, and necessary pre-terminated wiring.

Part No.	Description
61-697	Replacement LED Bulb
611-6008	Replacement Gauge, 0-35 PSI





## Wraparound Gauge Panels

Innovative Wraparound Gauge Panels not only offer a professional appearance, but provide improved gauge placement. Panels, Offered in lightweight fiberglass or genuine carbon fiber, panels are 33" wide x 7" high x 13-1/2" deep, with a 1" lip. White or black gel-coated fiberglass panels include gauges for oil pressure, water temperature, oil temperature, and fuel pressure, and are completely pre-wired and ready for installation. Carbon fiber panel is sold less gauges to allow customization.



61-6724

### Wraparound Fiberglass Gauge Panel With Standard Gauges

**61-6724 and 61-6024**



61-6024



61-7724

### Wraparound Fiberglass Gauge Panel With Extreme Gauges

**61-7724 and 61-7024**



61-7024

### Wraparound Genuine Carbon Fiber Gauge Panel **61-903**



61-903

## Deluxe Sprint Gauge Panels

Innovative two-gauge panels feature a self-contained low oil pressure warning system. Panels are fitted with QuickCar 2-5/8" diameter oil pressure and water temperature gauges, use a 9-volt battery for power, and install with quick fasteners. Choose from lightweight aluminum or ultra-light carbon fiber panels. Sold complete with required fasteners and battery.



61-6005



61-7005

Part No.	Description
61-6005	Aluminum Gauge Panel
61-6005-1	Aluminum Gauge Panel, Includes Magneto Switch
61-7005	Carbon Fiber Gauge Panel

Rear View

## Pro Sprint Gauge Panels

Two-gauge panels weigh less than 1 lb., yet are very durable. Gauge panels are fitted with QuickCar 2-5/8" diameter oil pressure and water temperature gauges, and fasten to dash from engine bay using included quick fasteners. Choose from lightweight aluminum or ultra-light carbon fiber panels.



61-6006



61-7004

Part No.	Description
61-6004	Aluminum Gauge Panel
61-6006	Aluminum Gauge Panel, Vertical Mount
61-7004	Carbon Fiber Gauge Panel

Rear View

## Replacement Gauges

Gauges include mounting grommet.

Part No.	Description
611-6004	Oil Pressure, 0-100 PSI
611-6005	Water Temperature, 100°F - 280°F



611-6004



611-6005



## Digital Open Wheel Gauge Panels

Lightweight aluminum panels have digital, 2-1/16" dia. electronic oil pressure and water temperature gauges with bright blue readout and graduated scale for increased readability. Built-in warning lights can be preset with the touch of a finger to cause the lighting to flash in the event of a problem. Weather-resistant, self-contained panels are powered by an included compact 12-volt rechargeable battery pack, and come with a charger. Also available with for vehicles with existing 12-volt power.

Part No.	Description
67-2004	Open Wheel Gauge Panel, For Cars With 12-Volt Battery, 6-3/4" W. x 3" H.
67-2005	Open Wheel Gauge Panel, Self-Contained, 6-3/4" W. x 4-1/16" H.



67-2004



67-2005

## Digital Open Wheel Gauge Panels Replacement Parts



67-003



67-006



63-220



63-225



63-230



63-605



63-604

Part No.	Description
67-003	Oil Pressure Gauge
67-006	Water Temperature Gauge
63-220	Water Temperature Sender 1-Wire
63-225	Water Temperature Sender 2-Wire
63-230	Oil Pressure Sender
63-604	Replacement Battery Charger for 67-2005 Panel
63-605	Replacement Battery Pack for 67-2005 Panel

## Ultra-Nite Sprint Car Gauge Panels

Compact, lightweight gauge panels are fitted with Auto Meter 2-5/8" diameter Ultra-Nite glow-in-the-dark oil pressure and water temperature gauges. Gauges are mounted in aluminum or carbon fiber panels using shockproof rubber grommets. Available Deluxe gauge panels include 9-volt battery for self-sufficient power supply for low oil pressure warning light and toggle switch. All panels include quick fasteners.



61-0604



61-0605

Rear View



61-0606



61-0704

Rear View



Rear View



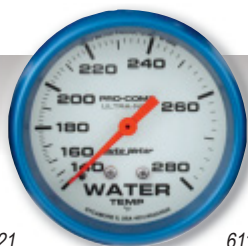
Part No.	Description
61-0604	Ultra-Nite Pro Sprint Panel, Aluminum Panel
61-0605	Ultra-Nite Deluxe Sprint Panel, Aluminum Panel, 9-Volt Powered
61-0606	Ultra-Nite Vertical Mount Panel, Aluminum Panel
61-0704	Ultra-Nite Pro Sprint Panel, Carbon Fiber Panel
61-0705	Ultra-Nite Deluxe Sprint Panel, Carbon Fiber Panel, 9-Volt Powered



61-0705



611-4521



611-4531

## Replacement Gauges

Gauges include mounting grommet. Gauges do NOT include (61-727) mounting grommet

Part No.	Description
611-4521	Oil Pressure, 0-100 PSI
611-4531	Water Temperature, 140°F - 280°F



## Redline Open Wheel Gauge Panels

Lightweight aluminum panels feature 2-5/8" oil pressure and water temperature Redline stepper gauges. Gauges are pre-programmed to change colors and flash when a problem arises. The warning levels are adjustable using the button on the gauge face. Panels are sold completely pre-wired for easy installation and include all necessary senders, and are also available in a self-contained format with 12-volt rechargeable battery and charger.

Part No.	Description
69-2004	Open Wheel Gauge Panel, for Cars with 12-Volt Battery, 8-5/8" W. x 4-1/2" H.
69-2005	Open Wheel Gauge Panel, Self-Contained Battery, 8-5/8" W. x 4-1/2" H.



## Open Wheel Gauge Panels Replacement Parts

Part No.	Description
69-003	Oil Pressure Gauge
69-006	Water Temperature Gauge
63-225	Water Temperature Sender, 2-Wire
63-230	Oil Pressure Sender
63-604	Replacement Battery Charger for 69-2005 Panel
63-605	Replacement Battery Pack for 69-2005 Panel



69-003



69-006



63-605



63-230



63-225



63-604

## Offset Sprint Gauge Grommet 61-727

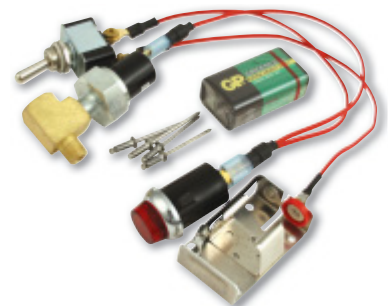
Special rubber grommet secures 2-5/8" diameter gauges into mounting panel, replacing traditional saddle brackets. Offsets gauges toward driver, while reducing gauge vibration for easier reading.



## Oil Pressure Warning Kits

Self-contained kits, powered by a 9-volt battery, provide immediate warning of oil pressure loss. Completely pre-wired and ready to install, kit includes switch, tee fitting, oil pressure sending unit, and battery. Deluxe kit upgrades to an aluminum tee fitting, and a weatherproof switch.

Part No.	Description
61-717	Oil Pressure Warning Kit
61-718	Deluxe Oil Pressure Warning Kit



**Ignition Control Panels**

QuickCar has become the industry leader in ignition control panels. Panels include bridged double-pole switches and large-gauge wiring with heavy-duty connectors for improved conductivity and reliability. Panels are pre-wired to connect directly to our wiring harnesses. Please refer to page 48 for the proper wiring harness.

**Ignition Control Panel 50-020**

Compact ignition panel includes push-to-start button, weatherproof ignition and an accessory switch. Panel is 4-5/8" wide x 2-1/2" high. Direct, plug-installation using the 50-200 or 50-201 wiring harness.



50-102



50-103

**Ignition Control Panels**

Ignition control panels are 3-3/8" wide x 3-5/8" high. Panels have push-to-start button and ignition switch. Available with or without ignition switch flip cover. A direct plug-in installation using 50-200 or 50-201 wiring harness.

Part No.	Description
50-102	Ignition Control Panel
50-103	Ignition Control Panel w/Flip Switch Ignition Cover

**Ignition Control Panels**

Panels, which are 3-3/8" wide x 4-1/4" high, include ignition switch, push-to-start button, and pilot light. Choice of panels with or without ignition switch flip cover. A direct, plug-in installation using 50-200 or 50-201 wiring harness.

Part No.	Description
50-052	Ignition Control Panel
50-053	Ignition Control Panel w/Flip Switch Ignition Cover



50-052



50-053



## Ignition Control Panels Cont. (Black)

### Ignition Control Panel 50-820

Compact ignition panel includes push-to-start button, weatherproof ignition switch, and an accessory switch. Panel is 4-5/8" wide x 2-1/2" high. Direct, plug-installation using the 50-200 or 50-201 wiring harness.



50-802



50-803

### Ignition Control Panels

Ignition control panels are 3-3/8" wide x 3-5/8" high. Panels have push-to-start button and ignition switch. Available with or without ignition switch flip cover. A direct, plug-in installation using 50-200 or 50-201 wiring harness.

Part No.	Description
50-802	Ignition Control Panel
50-803	Ignition Control Panel Ignition Switch Flip Cover

### Ignition Control Panels

Panels are 3-3/8" wide x 4-1/4" high and include ignition switch, push-to-start button and pilot light. Choice of panels with or without ignition switch flip cover. A direct plug-in installation using 50-200 or 50-201 wiring harness.

Part No.	Description
50-852	Ignition Control Panel
50-853	Ignition Control Panel Ignition Switch Flip Cover



50-852



50-853

**Ignition Control Panels With Single Accessory Switch**

Panels include ignition switch, push-to-start button, accessory switch, and two pilot lights. Panels are 4-5/8" wide x 4-3/8" high. Choice of panels with or without Ignition switch flip cover. A direct, plug-in installation using 50-200 or 50-201 wiring harness.



50-022



50-023

Part No.	Description
50-022	Ignition Control Panel
50-023	Ignition Control Panel w/Ignition Switch Flip Cover

**Ignition Control Panel With Two Accessory Switches 50-025**

Panel includes ignition switch, push-to-start button, two accessory switches, and three pilot lights. Panel is 4-5/8" wide x 4-3/8" high. A direct plug-in installation using 50-200 or 50-201 wiring harness.



**Basic Ignition Wiring Harnesses**

Ready-to-install, basic wiring harness eases the car building process. Each harness is 5' long and includes four individually colored wires. Sold complete terminated into the direct plug-in connector.

Part No.	Description
50-200	Basic Wiring Harness
50-201	Basic Wiring Harness, HEI



## Ignition Control Panels With Single Accessory Switch

Panels include ignition switch, push-to-start button, accessory switch, and two pilot lights. Panels are 4-5/8" wide x 4-3/8" high. Choice of panels with or without switch flip cover. A direct plug-in installation using 50-200 or 50-201 wiring harness.



50-822



50-823

Part No.	Description
50-822	Ignition Control Panel
50-823	Ignition Control Panel w/Ignition Switch Flip Cover

## Ignition Control Panel With Two Accessory Switches 50-825

Panel includes ignition switch, push-to-start button, two accessory switches, and three pilot lights. Panel is 4-5/8" wide x 4-3/8" high. A direct plug-in installation using 50-200 or 50-201 wiring harness.



## Toggle Switch Extensions

Push-on switch extensions ease toggle switch activation, particularly when wearing driving gloves. Sold in pairs in choice of red or black.

Part No.	Description
50-524	Red, Two-Pack
50-526	Black, Two-Pack

## Ignition Control Panel 50-165

Compact ignition panel includes ignition switch, momentary start button, and five accessory switches. Panel is 6-7/8" wide x 2" high.



## Fused Ignition Control Panel 50-163

Panel features fused ignition switch, momentary start button, and five fused accessory switches. Panel is 6-7/8" wide x 3-1/4" high.

## Ignition Control Panel 50-166

Similar to the 50-165 ignition panel, but with the addition of six pilot lights. Panel is 6-7/8" wide x 3-1/4" high and , includes ignition switch, momentary starter button, five accessory switches and six pilot lights.



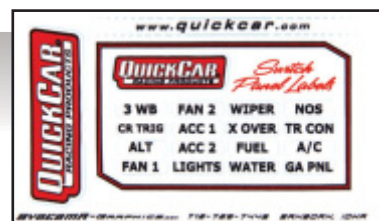
## Fused Ignition Control Panel 50-164

Similar to the 50-163 ignition panel, but slightly larger with the addition of six pilot lights. Includes fused ignition switch, momentary starter button, five fused accessory switches, and six pilot lights. Panel is 6-7/8" wide x 4-1/8" high.

## Switch Panel Sticker Kits

Customize QuickCar ignition control panels quickly and easily, while keeping a professional appearance. Sticker kit includes labels for 16 common functions that may be activated with accessory switches.

Part No.	Description
50-003	Sticker Kit For QuickCar Panels With Six Or More Switches





## Ignition Control Panel 50-865

Compact ignition panel includes ignition switch, momentary start button, and five accessory switches. Panel is 6-7/8" wide x 2" high.



## Fused Ignition Control Panel 50-863

Panel features fused ignition switch, momentary start button, and five fused accessory switches. Panel is 6-7/8" wide x 3-1/4" high.



## Ignition Control Panel 50-866

Similar to the 50-865 ignition panel, but with the addition of six pilot lights. Panel is 6-7/8" wide x 3-1/4" high and includes ignition switch, momentary starter button, five accessory switches, and six pilot lights.



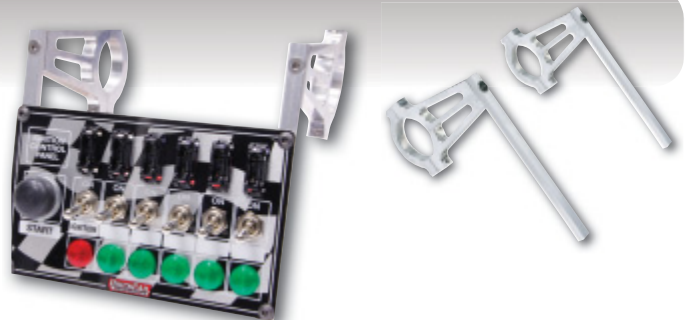
## Fused Ignition Control Panel 50-864

Similar and a bit larger than the 50-863 ignition panel, but with the addition of six pilot lights. Includes fused ignition switch, momentary starter button, five fused accessory switches, and six pilot lights. Panel is 6-7/8" wide x 4-1/8" high. For weatherproof switches, use part no. 50-7164.

## Roll Bar -To -Switch/Gauge Panel Mounting Brackets

Specialized brackets allow quick mounting gauge or switch panels to roll bar. Mounts virtually any height panel. Simply trim off any extra bracket length, if desired. Available to mount to 1-1/2", 1-5/8", or 1-3/4" dia. roll bar. Sold in pairs.

Part No.	Description
66-939	Switch Panel Mounting Bracket, 1-1/2" Roll Bar
66-940	Switch Panel Mounting Bracket, 1-3/4" Roll Bar
66-945	Switch Panel Mounting Bracket, 1-5/8" Roll Bar



## Weatherproof Ignition Control Panels

Weatherproof switch panels are 3-3/8" wide x 3-1/2" high and are a direct plug-in to the 50-200, 50-201, or \*50-2031 wiring harness.

Part No.	Description
50-750	Ignition Control Panel, Use with 50-200 or 50-201 Harness
50-7531	Single Ignition Control Panel, Use with *50-2031 Harness



## Weatherproof Ignition Control Panels with Single Accessory Switch

Weatherproof panels include ignition, momentary starter, and single accessory switches. Panels are 4-5/8" wide x 2-1/2" high and are a direct, plug-in to the 50-200, 50-201, 50-2021 (dual ignition), or \*50-2031 (single ignition) wiring harnesses.

Part No.	Description
50-720	Ignition Control Panel, Use 50-200 Or 50-201 Harness
50-711	Dual Ignition Control Panel, Use 50-2021 Harness
50-731	Single Ignition Control Panel, Use *50-2031 Harness

## Weatherproof Ignition Control Panels with Two Accessory Switches

Weatherproof panels with switches for momentary start, ignition, and two accessories. Panels are 4-1/8" wide x 3" high and are a direct plug-in to the 50-200, 50-201, 50-2021 (dual ignition), or \*50-2031 (single ignition) wiring harnesses.

Part No.	Description
50-740	Ignition Control Panel, Use with 50-200 Or 50-201 Harness
50-7411	Dual Ignition Control Panel, Use 50-2021 Harness
50-7431	Single Ignition Control Panel, Use *50-2031 Harness
50-7414	Single Ignition Control Panel with Dual Pick-Up Distributor, Use with 50-2034 Harness



## Weatherproof Ignition Control Panels With Three Accessory Switches

Weatherproof panels include ignition, momentary starter, and three accessory switches. Panels are 4-1/8" wide x 3" high.



Black Part No.	Checked Part No.	Description
50-7711	50-1711	Dual Ignition Control Panel, Use with 50-2021 Harness
50-7713	50-1713	Single Ignition Control Panel w/3-Wheel Braking, Use with 50-2021 Harness
50-7714	50-1714	Single Ignition Control Panel with Dual Pickup Distributor, Use with 50-2034 Harness
50-7731	50-1731	Single Ignition Control Panel, Use with *50-2031 Harness

\* Single Ignition Switch Panels That Fit Harness 50-2031 Will Also Fit With These Harnesses: 50-2032, 50-2033, 50-2035, 50-2051.



## Weatherproof Fused Ignition Control Panel 50-7164

Ignition panel combines the benefits of weatherproof, precision micro-switches with built-in fuse access and a compact, 6-7/8" wide x 4-1/8" high size. Includes momentary start, ignition, and five accessory switches.



## Weatherproof Ignition Control Panels With Four Accessory Switches

Weatherproof switch panels measure 3-1/4" wide x 4-1/2" high, and are a direct plug-in to the \*50-2031, 50-2021, or 50-2034 wiring harness. Includes ignition, momentary start, and 4 accessory switches.

Part No.	Description
50-7611	Ignition Control Panel, Use with 50-2021 Harness
50-7631	Ignition Control Panel, Use with *50-2031 Harness
50-7614	Ignition Control Panel, Use with 50-2034 Harness

## Weatherproof Ignition Control Panels with Single Accessory Switch

Weatherproof panels include ignition, momentary start, and single accessory switches. Panels are 2-1/2" wide x 4-5/8" high and are a direct, plug-in to the 50-200, 50-201, 50-2021 (dual ignition), or \*50-2031 (single ignition) wiring harnesses.

Part No.	Description
50-790	Ignition Control Panel, Use 50-200 Or 50-201 Harness
50-7911	Dual Ignition Control Panel, Use 50-2021 Harness
50-7931	Single Ignition Control Panel, Use *50-2031 Harness



50-031

## Ignition Control Panels with Single Accessory Switch

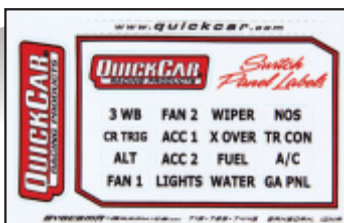
Pre-wired switch panels include ignition switch, push-to-start button, and choice of single accessory or 3-wheel brake switch. Panels are 4-5/8" wide x 2-1/2" high. A direct plug-in installation using the \*50-2031 wiring harness.

Part No.	Description
50-031	Single Ignition Control w/Accessory Switch
50-033	Single Ignition Control w/3-Wheel Brake Switch

## Weatherproof Panels With Four Accessory Switches

Weatherproof black switch panel with four accessory switches. Panels measure 4-1/8" wide x 3" high and are available with and without lights.

Part No.	Description
50-718	Four switch panel, lighted
50-719	Four switch panel, non-lighted



## Switch Panel Sticker Kits

Customize QuickCar ignition control panels quickly and easily, while keeping a professional appearance. Sticker kits includes labels for 16 common functions that may be activated with accessory switches.

Part No.	Description
50-004	Sticker Kit For QuickCar Panels With Five Or Fewer Switches

\* Single Ignition Switch Panels That Fit Harness 50-2031 Will Also Fit With These Harnesses: 50-2032, 50-2033, 50-2035, 50-2051.

**Ignition Control Panels With Accessory Rocker Switches**

Similar in quality and construction to traditional QuickCar ICP's, but with premium rocker switches. Panels feature 25-amp capacity switches that are dust/water-resistant and include screw-on terminal connections. Offered in checkered flag or black, panels are completely pre-wired and ready to install. May be plugged directly into 50-200 or 50-201 wiring harnesses, if desired.

**52-165 (Checkered Flag) 52-865 (Black)**

Includes ignition switch, momentary starter switch, and three accessory switches. Measures 7" wide x 3" high.

**52-166 (Checkered Flag) 52-866 (Black)**

Similar to the above panels, but with rocker switches that illuminate upon activation. Includes illuminated ignition switch, momentary starter switch, and three illuminated accessory switches. Measures 7" wide x 3" high.

**52-163 (Checkered Flag) 52-863 (Black)**

Panel features the addition of fused rocker switches for added electrical system protection. Includes fused ignition switch, momentary starter switch, and three fused accessory switches. Measures 7" wide x 3-1/2" high.





## Ignition Control Panels With Accessory Rocker Switches Cont.

### 52-164 (Checkered Flag) 52-864 (Black)

Top-of-the-line panel incorporates rocker switches that are fused and illuminated. Includes illuminated and fused ignition switch, momentary starter switch, and three illuminated and fused accessory switches. Measures 7" wide x 3-1/2" high.



## Accessory Rocker Panels

Black aluminum panel with four 25-amp capacity rocker switches. Panels measure 7" wide x 3-1/2" high and are available with and without lights.



52-716



52-717

Part No.	Description
52-716	Four Rocker Switch Panel, Non-lighted
52-717	Four Rocker Switch Panel, Lighted

## Replacement/Accessory Rocker Switches

Part No.	Description
52-500	On/Off Rocker Switch
52-510	Momentary Start Rocker Switch
52-512	Momentary On/Off Rocker Switch
52-601	Lighted On/Off Rocker Switch, Red
52-602	Lighted On/Off Rocker Switch, Blue
52-604	Lighted On/Off Rocker Switch, Amber
52-609	Lighted On/Off Rocker Switch, Green
52-615	Lighted On/Off/On Rocker Switch, Red



52-500



52-601

## Circuit Breaker Panels

Attractive, gloss black Ignition Control Panels include premium, 20-amp circuit breakers for the ultimate in electrical system protection. Circuit breakers utilize an easily resettable design. Panels are completely pre-wired and ready to install.

### 50-868

Panel includes push-to-start button, ignition toggle switch, and five accessory toggle switches, complete with circuit breakers. Measures 6-7/8" wide x 4" tall.



### 50-869

Similar to the above panel, but 1" taller to accommodate the addition of six pilot lights. Measures 6-7/8" wide x 5" tall.

## Replacement Resettable Circuit Breakers

Circuit breakers may be reset with the touch of a button. Offered in various amp ratings, heavy-duty design circuit breakers include screw connectors to ensure positive connections.



Part No.	Description
50-9715	15 Amp
50-9720	20 Amp
50-9725	25 Amp
50-9730	30 Amp

## Clear Boot 50-700

Clear protective boot for resettable circuit breakers. Protects circuit breaker from dirt and moisture.



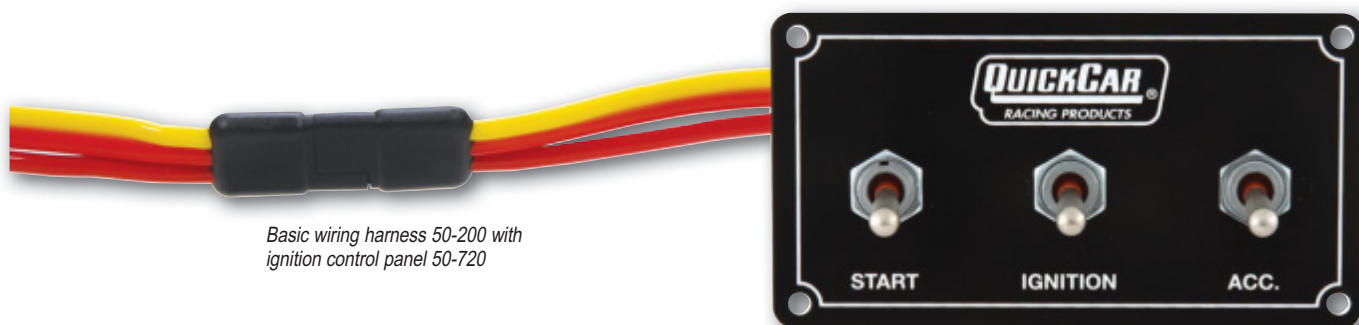


## Wiring Harnesses

QuickCar offers a wide variety of wiring harnesses, each designed exclusively for use with their popular ignition control panels. Each harness includes the necessary terminations and a direct plug-in connector for easy installation. Simply refer to the "Switch Panel To Wiring Harness Chart" to select the proper harness.

### Switch Panel To Wiring Harness Chart

The ignition switch panels listed below are designed as a direct plug-in installation to a specific wiring harness, significantly easing and speeding-up the car building process. The chart identifies the proper wiring harness for each ignition switch panel.



Basic wiring harness 50-200 with ignition control panel 50-720

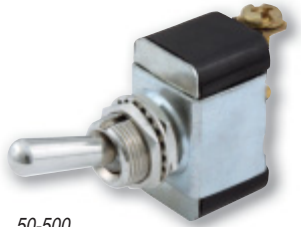
Ignition Switch Panel	Wiring Harness
50-020 / 50-820	50-200 (Basic) or 50-201 (HEI)
50-022 / 50-822	50-200 (Basic) or 50-201 (HEI)
50-023 / 50-823	50-200 (Basic) or 50-201 (HEI)
50-025 / 50-825	50-200 (Basic) or 50-201 (HEI)
50-031	*50-2031 (Single Ignition)
50-033	*50-2031 (Single Ignition)
50-052 / 50-852	50-200 (Basic) or 50-201 (HEI)
50-053 / 50-853	50-200 (Basic) or 50-201 (HEI)
50-102 / 50-802	50-200 (Basic) or 50-201 (HEI)
50-103 / 50-803	50-200 (Basic) or 50-201 (HEI)
50-163 / 50-863	No Harness Needed
50-164 / 50-864	No Harness Needed
50-165 / 50-865	No Harness Needed
50-166 / 50-866	No Harness Needed
50-1711 / 50-7711	50-2021 (Dual Ignition)
50-1713 / 50-7713	50-2021 (Dual Ignition)
50-1714 / 50-7714	50-2034 (Dual Pickup Ignition) or 50-7414
50-711	50-2021 (Dual Ignition)

Ignition Switch Panel	Wiring Harness
50-7164	No Harness Needed
50-720	50-200 (Basic) or 50-201 (HEI)
50-731	*50-2031 (Single Ignition)
50-740	50-200 (Basic)
50-7411	50-2021 (Dual Ignition)
50-7431	*50-2031 (Single Ignition)
50-750	50-200 (Basic) or 50-201 (HEI)
50-7531	*50-2031 (Single Ignition)
50-7611	50-2021 (Dual Ignition)
50-7631	*50-2031 (Single Ignition)
50-7614	50-2034 (Dual Pickup Ignition) or 50-7414
50-7731	*50-2031 (Single Ignition)
50-790	50-200 (Basic) or 50-201 (HEI)
50-7911	50-2021 (Dual Ignition)
50-7931	*50-2031 (Single Ignition)
50-868	No Harness Needed
50-869	No Harness Needed
52 Series Rocker Switch Panels	50-200 (Basic) or 50-201 (HEI)

\* Single Ignition Switch Panels That Fit Harness 50-2031 Will Also Fit With These Harnesses: 50-2032, 50-2033, 50-2035, 50-2051.

## Replacement Components

Designed specifically for QuickCar ignition control panels.



50-500



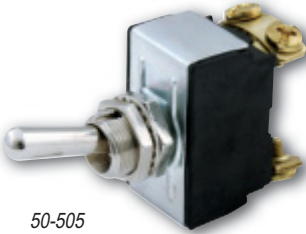
50-501



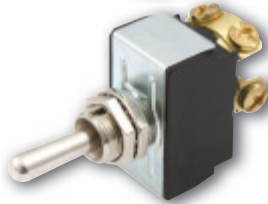
50-503



50-504



50-505



50-506



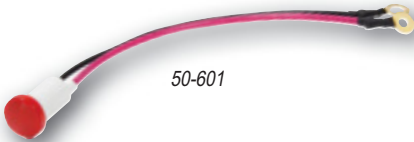
50-510



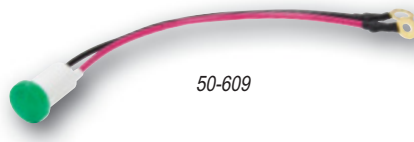
50-512



50-610



50-601



50-609



50-602



50-604

Part No.	Description
50-500	Standard Single-Pole Switch
50-501	Aircraft Flip Switch Cover
50-503	Magneto Switch, 6-Post
50-504	3-Wheel Brake Switch w/Rubber Cover
50-505	Bridged Double-Pole Switch
50-506	Ignition w/Start Switch
50-510	Push-To-Start Momentary Switch
50-512	Momentary Toggle Switch
50-601	Red Pilot Light
50-602	Blue Pilot Light
50-604	Amber Pilot Light
50-609	Green Pilot Light
50-610	Replacement Rubber Boot For Switch

## ATC Fuses

Designed for use in QuickCar Switch Panels, fuses are offered in a variety of amp ratings. Sold in packs of 5.

Part No.	Description
50-905	5 Amp
50-910	10 Amp
50-915	15 Amp
50-920	20 Amp
50-925	25 Amp
50-930	30 Amp
50-960	Fuse Assortment, 5 of each fuse



50-920



50-925



50-930



50-905



50-910



50-915

## Line Clamps

The professional method when securing fuel lines, electrical wiring, etc. to chassis. Rubber-coated clamps are in packs of 10.

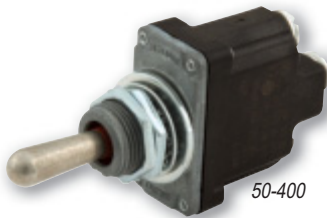
Part No.	Description
66-850	1/4" Clamp
66-852	3/8" Clamp
66-854	1/2" Clamp
66-856	5/8" Clamp
66-858	3/4" Clamp
66-860	1" Clamp



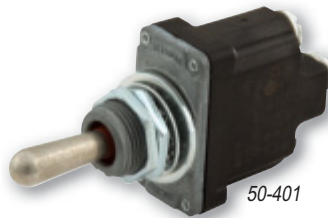


## Weatherproof Micro-Switches

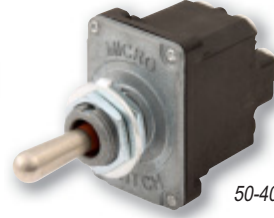
QuickCar offers a wide variety of weatherproof micro-switches and circuit breakers. Well-suited for replacement purposes or when building custom switch panels.



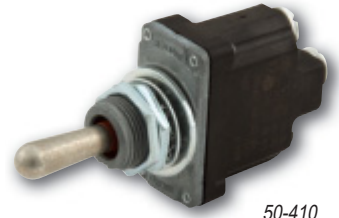
50-400



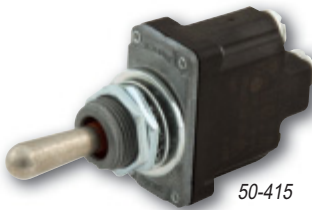
50-401



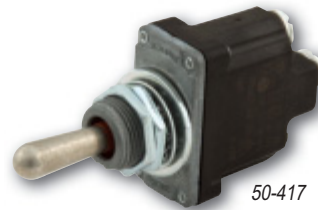
50-402



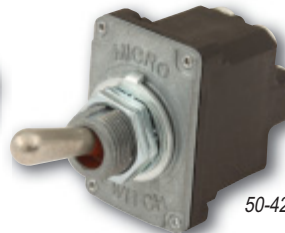
50-410



50-415



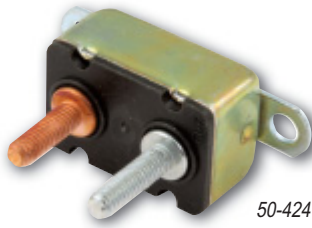
50-417



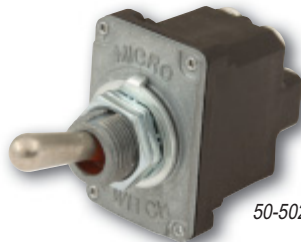
50-420



50-422



50-424



50-502

Part No.	Description
50-400	Momentary Micro-Switch Starter Switch
50-401	Momentary-Off-Momentary Single-Pole Micro-Switch
50-402	Momentary-Off-Momentary Double-Pole Micro-Switch
50-410	On-Off Single Pole Micro-Switch
50-415	On-Off-On Micro-Switch
50-417	On-On Micro-Switch
50-420	On-On Double-Pole Crossover Micro-Switch
50-422	20-Amp Circuit Breaker
50-424	40-Amp Circuit Breaker
50-502	Weatherproof Magneto Micro-Switch

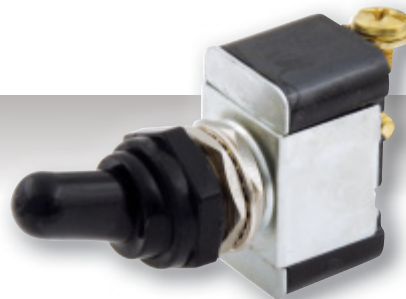


### HD Switch With Flip-Up Switch Cover 50-520

Heavy-duty switch includes an aircraft-type, flip-up switch cover.

### HD Switch With Black Switch Cover 50-522

Heavy-duty switch includes a weatherproof black switch cover.





50-200

## Basic Ignition Wiring Harnesses

Ready-to-install basic wiring harnesses ease the car building process. Each harness is 5' long and includes four individually labeled wires complete with plug-in connector.

Part No.	Description
50-200	Basic Wiring Harness
50-201	Basic Wiring Harness, HEI

## Mod Ignition Wiring Harness Kit

Universal harness for UMP/IMCA modified will connect all ignition components. Includes switch panel with weather-proof switches.

Part No.	Description
50-2030	Wiring Harness Kit With Checkered Panel
50-2033	Wiring Harness Only
50-2037	Wiring Harness Kit with Black Panel



50-2030



## Single Ignition Wiring Harness 50-2031

A universal Weatherpack harness for race cars utilizing a single-box ignition system. Wiring harness hooks the following items together: ignition box, coil, distributor, starter solenoid, tachometer, switch panel.

## Dual Ignition Wiring Harness 50-2021

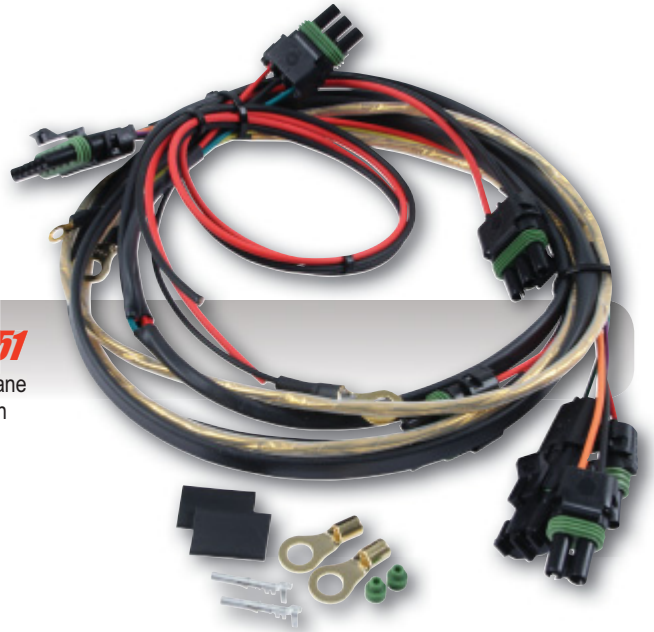
A universal Weatherpack harness for race cars using a dual-box ignition system. Wiring harness hooks the following items together: 2 ignition boxes, 2 coils, 2 distributor pickups, starter solenoid, tachometer, switch panel.





## **HEI Ignition Wiring Harness 50-2032**

Universal wiring harness is designed for applications using an HEI ignition system. Wiring harness hooks the following items together: HEI distributor power and tach, switch panel, starter solenoid, tachometer.



## **Crane/Fast 6700-6701 Ignition System 50-2051**

Specialized wiring harness is designed for asphalt late models using a single Crane 6700-6701 Ignition system. Sold complete with wiring and connectors. For use with any ignition panel that fits the 50-2031. Wiring harness hooks the following items together: ignition box, coil distributor, starter solenoid, tachometer, switch panel.

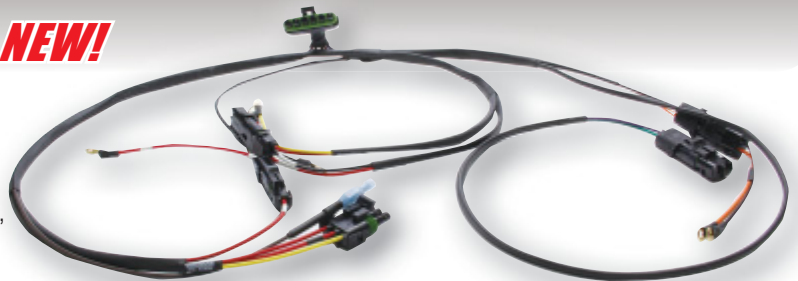


## **Dual Pickup Distributor Ignition Wiring Harness 50-2034**

Universal Weatherpack wiring harness is designed for cars using a single ignition box and dual magnetic pickup distributor, or crank trigger/distributor combination. Wiring harness hooks the following items together: ignition box, coil, 2 distributor pickups, starter solenoid, tachometer, switch panel.

## **Dual Pickup Distributor Ignition *NEW!* Wiring Harness 50-2035**

A Universal Weatherpack harness for dirt cars utilizing a single-box ignition system with a 3-wheel brake solenoid. Wiring harness hooks the following items together: ignition box, coil, distributor, starter solenoid, 3-wheel brake solenoid, tachometer, switch panel.



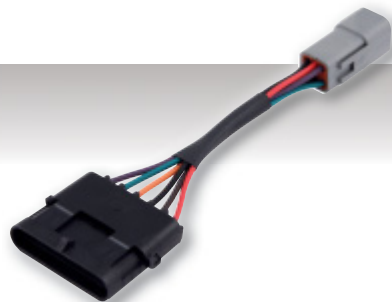


**Ignition System Accessories**

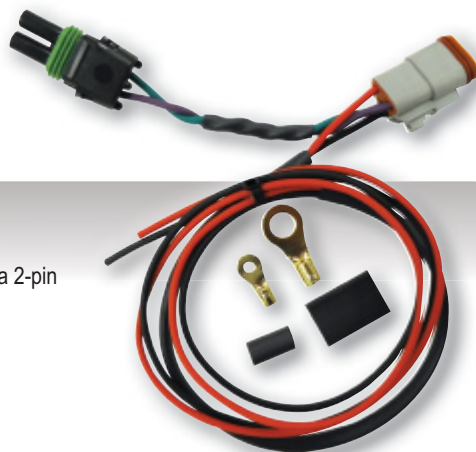
QuickCar ignition wiring systems are used by many chassis builders and comply with specifications set by most sanctioning bodies.

**Deutsch Weatherpack Adapter 50-2007**

Eases the installation of MSD HVC ignitions, adapting the Deutsch square 6-pin connector to a 6-pin flat male Weatherpack connector.

**MSD Magnetic Pickup To Weatherpack Adapter 50-207**

Specialized adapter eliminates the need to cut MSD magnetic pickup wires when converting primary ignition wiring to Weatherpack connectors.

**Crane Ignition Distributor Adapter 50-2008**

Special wiring harness adapts Crane Ignition distributors that use a 3-pin Deutsch connector to a 2-pin Weatherpack connector.

**MSD Box Quick Release 50-442**

Raised platform mounting plate accepts popular MSD 6000-series ignition and may be mounted to any flat surface. Sold complete with quick-fasteners to allow fast ignition unit changes in the event of a failure.

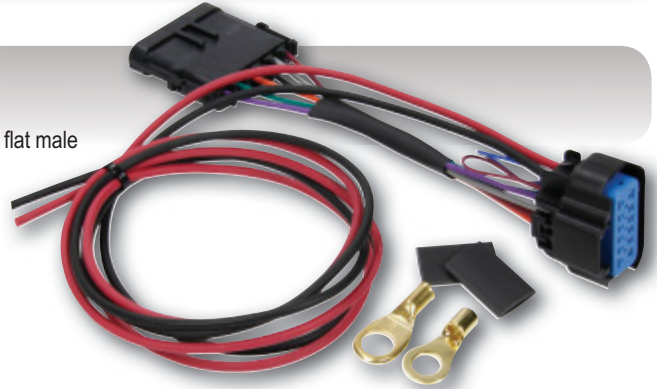
**3-Wheel Brake Harness 50-034**

Wiring harness with Weatherpack connector is used to supply power from the 3-wheel brake switch to the solenoid.



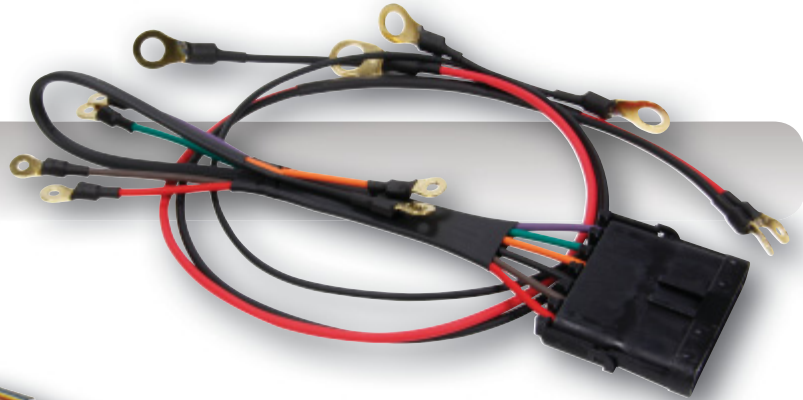
## Digital MSD Adapter 50-2006

Pigtail harness adapts an MSD Digital 6-ignition connector to a standard 6-pin flat male Weatherpack connector.



## Crank Trigger Wiring Harness Extension 50-206

Wiring harness is used to extend the common MSD purple/green wires 2-1/2 ft. for connection to the crank trigger on the front of the engine.



## 7AL-2 Plus Adapter 50-7222

Adapts the wiring connector of the popular MSD 7AL-2 Plus Ignition to a 6-pin Weatherpack connector.



## LED Light Strips

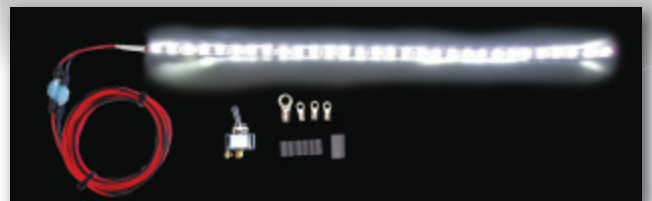
LED Light Strips can be placed virtually anywhere where lighting is desired: inside the driver's compartment, under the hood, etc. Offered in a variety of colors.

Part No.	Description
61-791	Yellow LED Strip
61-792	Blue LED Strip
61-793	Green LED Strip
61-794	Purple LED Strip
61-9790	Red LED Strip
61-9795	White LED Strip

## LED Under-Car Light Kit 61-795

Perfect for dark pit areas when an urgent under-car repair is required. Bright white, 18" long LED light strip. Installs easily under car or in any dark area.

Part No.	Description
61-9795	Replacement LED Strip With Connectors



## Battery Cable Kits

QuickCar Battery Cable Kits include 15 feet of red power cable, 2 feet of black ground cable, one pair of nickel-plated marine-style battery terminals, eight gold-plated power ring terminals, and heat-shrink tubing. All battery cables are made from copper.

Part No.	Description
57-008	4-Gauge, Side Mount
57-009	4-Gauge, Top Post Mount
57-010	2-Gauge, Top Post Mount
57-011	2-Gauge, Side Mount
57-014	4-Gauge, Top Post Mount, Includes Master Disconnect Switch



## Drag Kit 57-012

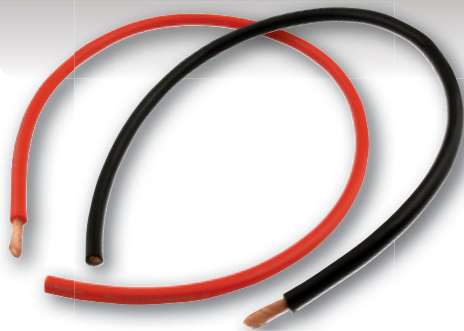
QuickCar Drag Race Kit contains all you need to wire a dual-battery system. The kit includes 25 feet of 2-gauge red power cable, 8 feet of 2-gauge black ground cable, 2 pair of nickel plated brass marine type battery terminals, 14 gold-plated power ring terminals, and heat-shrink tubing.



## Battery Ground Cables

Pre-terminated with gold-plated copper terminals for maximum conductivity, ground cables are 18" in length. Choose from 2- or 4-gauge.

Part No.	Description
57-1809	4-Gauge
57-1810	2-Gauge



## Race Wire

Used by many racing teams and chassis builders. Constructed with very fine stranded rope-lay copper wire for high flexibility and superior power flow with insulation capable of withstanding extreme temperatures.

DESCRIPTION	1'	5'	10'	15'	125' ROLL
<b>2-Gauge</b>					
Red, Per Ft.	57-101	57-321	—	57-1521	57-102
Black, Per Ft.	57-103	57-323	—	57-1523	57-104
<b>4-Gauge</b>					
Red, Per Ft.	57-091	57-341	—	57-1541	57-092
Black, Per Ft.	57-093	57-343	—	57-1543	57-094
<b>8-Gauge</b>					
Red, Per Ft.	57-240	—	57-2401	—	—
Black, Per Ft.	57-250	—	57-2501	—	—
<b>14-Gauge</b>					
Red, Per Ft.	57-201	—	57-2011	—	—
Black, Per Ft.	57-203	—	57-2031	—	—
White, Per Ft.	57-236	—	57-2361	—	—

## Battery Cable Ends

Heavy-duty, gold-plated copper ring terminals are sold in pairs with heat shrink tubing.

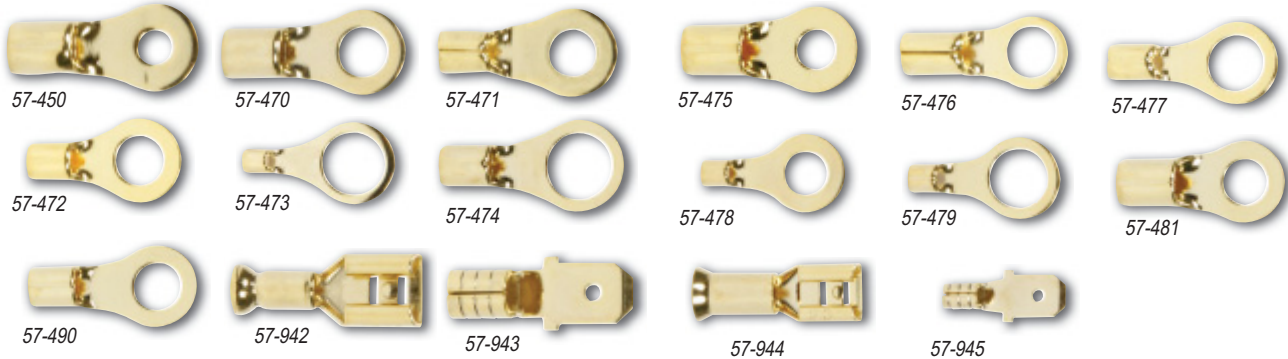
Part No.	Description	Part No.	Description
<b>2-Gauge</b>			
57-540	5/16"	<b>4-Gauge</b>	
57-550	3/8"	57-520	5/16"
57-560 <b>NEW</b>	1/2"	57-525	1/4"
		57-530	3/8"
		57-535 <b>NEW</b>	1/2"





## Ring & Spade Terminals

Ideal for custom wiring tasks, ring, and spade terminals are available in a variety of sizes. Terminals are complete with heat-shrink. Sold in pairs.



Part No.	Description	Wire Range (Gauge)	Stud Size	Tab Width
57-450	Ring Terminal (Pair) with Heat-Shrink	#12-10	#6 (.148")	—
57-470	Ring Terminal (Pair) with Heat-Shrink	#12-10	#10 (.200")	—
57-471	Ring Terminal (Pair) with Heat-Shrink	#16-14	#8 (.174")	—
57-472	Ring Terminal (Pair) with Heat-Shrink	#16-14	#10 (.200")	—
57-473	Ring Terminal (Pair) with Heat-Shrink	#16-14	3/8"	—
57-474	Ring Terminal (Pair) with Heat-Shrink	#10-8	3/8"	—
57-475	Ring Terminal (Pair) with Heat-Shrink	#10-8	#10 (.200")	—
57-476	Ring Terminal (Pair) with Heat-Shrink	#22-16	#6 (.148")	—
57-477	Ring Terminal (Pair) with Heat-Shrink	#22-16	#10 (.200")	—
57-478	Ring Terminal (Pair) with Heat-Shrink	#16-14	1/4"	—
57-479	Ring Terminal (Pair) with Heat-Shrink	#16-14	5/16"	—
57-481	Ring Terminal (Pair) with Heat-Shrink	#8	1/4"	—
57-490	Ring Terminal (Pair) with Heat-Shrink	#8	5/16"	—
57-942	Female Spade (Pair) with Heat-Shrink	#16-14	—	.259"
57-943	Male Spade (Pair) with Heat-Shrink	#12-10	—	.250"
57-944	Female Spade (Pair) with Heat-Shrink	#12-10	—	.259"
57-945	Male Spade (Pair) with Heat-Shrink	#16-14	—	.250"

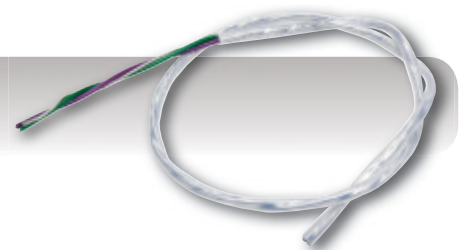


### Impact Crimper 64-020

Excellent for crimping standard power rings onto battery cables for permanent termination.

### Shielded Distributor Wire 57-200

Specially shielded, three-wire harness protects the trigger signal from the distributor from EMI (Electro Magnetic Interference). Sold per foot.

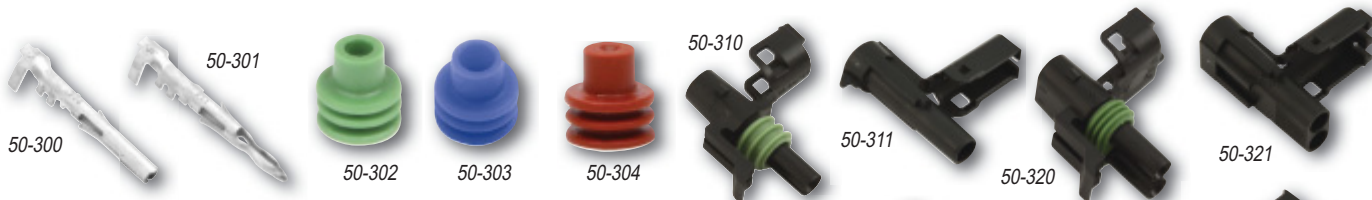


### Gator Clamps 50-435

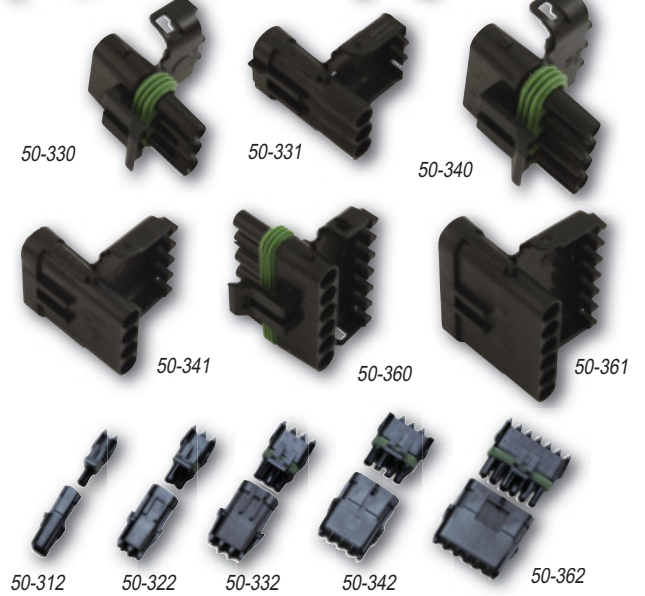
Heavy-duty gator clamps are ideal for repairing or customizing battery charger connectors, remote starters, etc. Sold in pairs, (1) red and (1) black rubber-coated.

**Weatherpack Terminals**

A secure, virtually bulletproof wire termination with a waterproof cable seal for connecting ignition or accessories throughout the race car. One through six male and female connectors are available. Rated up to 20A at 12-volts DC. All connectors include pins and seals. Sold Individually.

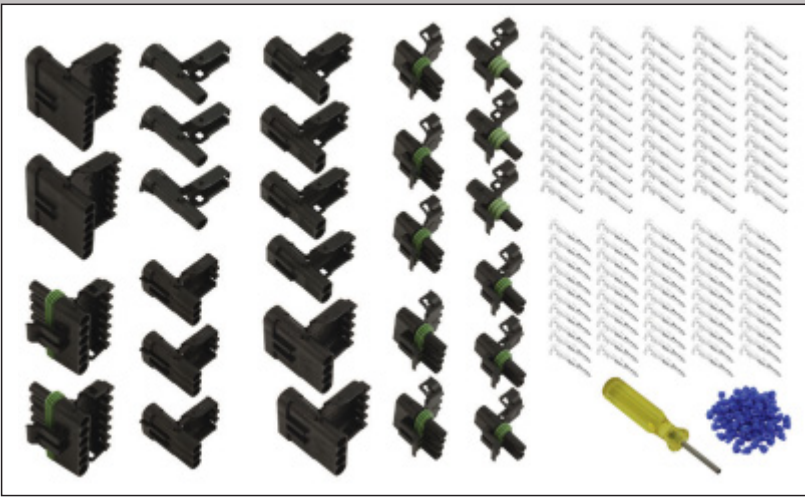


Part No.	Description
50-300	Female Pin
50-301	Male Pin
50-302	Green Cable Seal, 14, 16, 18 AWG Wire
50-303	Blue Cable Seal, 10 AWG Wire
50-304	Red Cable Seal, 20 AWG Wire
50-310	Female Connector, 1-Pin
50-311	Male Connector, 1-Pin
50-312	1-Pin Connector Kit, Male And Female
50-320	Female Connector, 2-Pin
50-321	Male Connector, 2-Pin
50-322	2-Pin Connector Kit, Male And Female
50-330	Female Connector, 3-Pin
50-331	Male Connector, 3-Pin
50-332	3-Pin Connector Kit, Male And Female
50-340	Female Connector, 4-Pin
50-341	Male Connector, 4-Pin
50-342	4-Pin Connector Kit, Male And Female
50-360	Female Connector, 6-Pin
50-361	Male Connector, 6-Pin
50-362	6-Pin Connector Kit, Male And Female



**Weatherpack Kit 50-380**

230-piece Weatherpack kit includes a wide variety of connectors, housing cable seals and contact pins. Sold in plastic carrying case.



**Pin Tool Remover 50-399**

Required to remove contact pins from Weatherpack housing.



## Ignition/Start Switch With Harness 50-507

Includes a 50-506 ignition switch, along with 50-200 basic wiring harness and 50-501 switch flip cover. Kit is pre-wired, and includes the starter switch and ignition switch, all in one.



## Remote Start Button 50-434

Handy when performing valve lash adjustments. Includes heavy-duty leads with gator clamps that connect to the starter solenoid, allowing the engine to be easily turned over.



## Heavy Duty Automatic Wire Stripper Pliers 50-393

Heavy-duty, 6" pliers allow quickly strip 8-18 gauge wires for termination. A bolt-on depth adjustment guide provides consistent, reliable strip length.



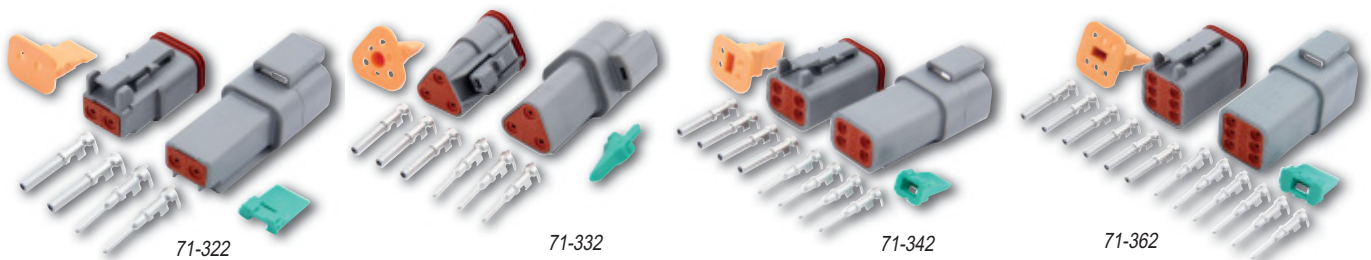
## Ratcheting Crimper Pliers 50-395

Perform consistent, professional quality crimps to a wide variety of electrical terminals including insulated, non-insulated, Weatherpack, small gauge, or spark plug wire. Unique design allows quick jaw changes without the need for tools. Rigid, heavy-duty pliers also have an adjustment for crimping pressure.



## Deutsch Connectors

Durable, precision connectors include plastic male and female housing ends with indexed locks to securely lock, while sealing out dirt and moisture. Kits are sold complete with terminals, silicone rubber seals and strong crimp tabs for 12-18 gauge wires.



Part No.	Description
71-322	Deutsch Connector Kit, 2-Pin
71-332	Deutsch Connector Kit, 3-Pin
71-342	Deutsch Connector Kit, 4-Pin
71-362	Deutsch Connector Kit, 6-Pin



## Top Mount Battery Terminals

Made from solid brass and 24k gold or nickel-plated for optimum conductivity, terminals allow attaching battery cables to top-mount batteries. The 57-620 has two extra ports for accessory wires. Sold in pairs.



57-610



57-607



57-620

Part No.	Description
57-607	Battery Terminal Covers
57-610	Brass/Nickel-Plated Terminals
57-620	Brass/Gold-Plated Terminals



## Remote Jumper Posts

Provides remote access to the battery. Terminals have insulated covers to prevent accidental contact from parts with opposing polarity.

Part No.	Description
57-701	Red
57-702	Black
57-703	Red And Black, Pair

## Charging Post Mounting Brackets

Charging post brackets allow 57-703 remote charging posts to be professionally mounted. Machined aluminum brackets are black anodized and offered either flat, for mounting to a flat surface, or bent, for mounting on firewall or inside of trunk. Brackets have two holes to accept red and black remote charging posts. Brackets may also be purchased complete with charging posts.



57-708



57-718



57-709



57-719

Part No.	Description
57-708	Flat Mounting Bracket
57-709	Bent Mounting Bracket
57-718	Flat Mounting Bracket With Charging Posts
57-719	Bent Mounting Bracket With Charging Posts

## Side-Mount Battery Terminals 57-660

Battery terminals are 24k gold-plated for optimum conductivity. Side-mount terminals allow you to attach cables to GM-style side-mount batteries. Comes with nut and lock washers for 5/16" studs. Long stud allows use of multiple or thick power ring connectors. Sold in pairs.



## Battery Cable Boots 57-604

May be used for covering battery terminals on small terminal batteries or starter solenoid connections. Boots may be used with up to 2-gauge cable. Sold as a pair, (1) red and (1) black.



## Terminal Buss Bar 57-801

Glass-filled red nylon Buss Bar with 12 connection terminals, each able to handle up to 15 amps continuously. 1/4" stainless steel terminal post and (12) #8-32 stainless steel attaching screws.

## 8-Terminal Power Distribution Post

180 amp maximum with 20 amps per connection max. Glass-filled nylon base with nickel-plated copper connection plate. 5/16" stainless steel connection post and (8) #8-32 stainless steel screws. Available in black or red.

Part No.	Description
57-805	Red Eight-Point Power Post
57-806	Black Eight-Point Power Post



57-806

57-805

## Power Distribution Stud 57-807

Connect two or more voltage cables together. Glass-filled nylon base with 3/8" stud. 160 amps maximum.



## Master Disconnects

Most sanctioning bodies require these for an emergency cut-off switch. Our Master Disconnect Switches come complete with a red epoxy-coated handle and mounting plate. Mounting plate is 2-1/2" x 2-1/2".



55-008/55-009/55-012



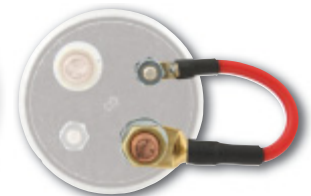
55-010/55-011/55-013



55-021/55-022/55-023



Rear



55-120

Part No.	Description
55-001	Switch Only
55-002	Switch Only, Cars w/Alternator
55-005	Switch Only For Use With High-Current Alternators
55-006	Replacement Red Handle For 55-030
55-008	Switch With Flag Mounting Plate, Cars With High-Current Alternators
55-009	Switch With Flag Mounting Plate
55-010	Switch With Black Mounting Plate
55-011	Switch With Black Mounting Plate, Cars w/Alternator
55-012	Switch With Flag Mounting Plate, Cars w/Alternator
55-013	Switch With Black Mounting Plate, Cars With High-Current Alternators
55-021	Switch With Silver Mounting Plate
55-022	Switch With Silver Mounting Plate, Cars w/Alternator
55-023	Switch With Silver Mounting Plate, Cars With High-Current Alternators
55-030	Weatherproof Switch With Black Plate, Red Handle, 3-Post
55-031	Weatherproof Switch With Black Plate, Silver Handle, 3-Post
55-55	Replacement Red Switch Handle With Screw
55-120	Jumper Wire, 3" Long Wire For Use With 55-011, 55-012, or 55-022
55-121	Jumper Wire, 3" Long Wire For Use With 55-008, 55-013, or 55-023



55-030



55-031

## Battery Disconnect Boots

Protects battery disconnect terminals from being accidentally shorted.

Part No.	Description
57-601	Red, Pair
57-602	Black, Pair

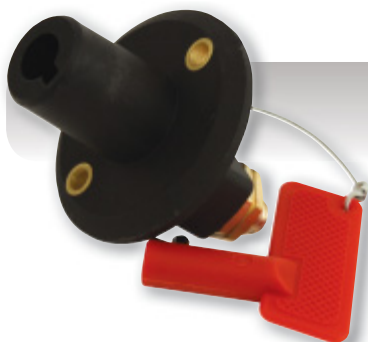


57-602

## Stud Feed-Thru

**57-700**

Designed for use where a 12-volt power source must pass through a panel (i.e. firewall).



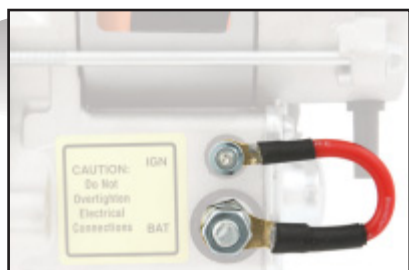
## Plastic Master Disconnect Switch W/Removable Key **55-003**

Removable key adds a measure of safety and security, while limiting switch access.

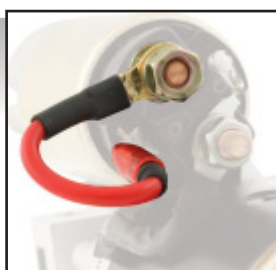
Part No.	Description
55-004	Replacement Key

## Heavy-Duty Starter Solenoid **50-430**

Durable solenoid is impervious to dirt, heat, and vibration. Will still function when others fail.



50-2002



50-2001

## Starter Jumper Wires

Starter jumper wire is used when a remote solenoid is also being used. Wire jumps power from the solenoid to the starter when starter is engaged. Choose from wires with spade or ring-style terminal ends.

Part No.	Description
50-2001	Spade-Type Jumper Wire, Allstar Performance Or Tilton Starters
50-2002	Ring Terminal Jumper Wire, Bert Or Brinn Starters

## Battery Quick Disconnects

The battery cable quick disconnect enables you to change out a battery fast. Also used for battery charging and anywhere a quick disconnect is helpful. Sold individually, complete with required connectors. Three are generally used; (1) for the battery end, (1) for the car end, and (1) for a spare battery or battery charger.

Part No.	Description
57-707	Black Cover for 57-704 Connector
57-705	2 AWG
57-706	4 AWG
57-704	8 AWG
50-513	6-AWG Connector Holster
50-514	6-AWG Connector Pin



57-705



57-706



57-704



57-707



50-513



50-514



## Remote Outlet Kits

Remote outlet attaches to the chassis or runs through a body panel, and provides quick, plug-in access for battery chargers or oil pre-heaters. Kits are sold complete with 5' long wiring harness and necessary terminals. Choose from kits with or without outlet cover.



Part No.	Description
57-711	Remote Outlet For Oil Heater Or Battery Charger
57-723	Remote Outlet For Oil Heater Or Battery Charger, Includes Female Connector And Outlet Cover

## Alternator Wire Kit w/Quick Disconnect 57-105

Universal alternator wire kit includes 9 ft. of 8-gauge wire, ring terminals, boot, and quick disconnects for easy installation/disassembly.

**NEW!**



**NEW!**

## Alternator Wire Kit 57-106

Universal alternator wire kit includes 9 ft. of 8-gauge wire, ring terminals, and boot.

## Alternator Wire Boot

**57-605**

Designed to work with 8-gauge wire.  
Sold Individually



## Male Recessed Outlet

**57-710**

Often used for remote access to battery or oil heater.



57-810

57-820

57-830

## Firewall Grommets

Mounts securely to the firewall and locks onto the wire that passes through the bushing. Provides a waterproof seal and a vibration proof feed-through.

Part No.	Description
57-810	8-12 AWG
57-820	2-4 AWG
57-830	1/0 AWG

QuickCar Racing Products has set the performance racing industry standard for battery cables and wiring. Our fine-stranded, rope-lay copper construction wire offers the absolute best in current carrying capabilities, while the 220°F + insulation can withstand the high temperatures and fluids common to racing. QuickCar offers a complete line of battery cable kits and wiring accessories that are reliable, durable, and affordable.

### **Premium 4-Gauge Wiring Kit 50-232**

Premium 4-gauge wiring kit includes the 50-020 ignition control panel, 4-AWG battery cable, wiring harness, 55-009 master disconnect switch, solenoid, top-mount battery terminals, ring terminals, heat-shrink tubing, and wire clamps.



### **Premium 4-Gauge Wiring Kit 50-832**

With Black Switch Panel/Master Disconnect.



### **4-Gauge Wiring Kit 50-231**

QuickCar's 4-gauge wiring kit is sold with the 50-022 ignition control panel, 4-AWG battery cable, wiring harness, 55-009 master disconnect switch, solenoid, top-mount battery terminals, ring terminals, heat-shrink tubing and wire clamps.



## 4-Gauge Wiring Kit **50-831**

With Black Switch Panel/Master Disconnect.



## 2-Gauge Wiring Kit **50-230**

Heavy-duty, 2-gauge wiring kit includes the 50-053 ignition control panel, 2-AWG battery cable, wiring harness, 55-009 master disconnect switch, solenoid, top-mount battery terminals, ring terminals, heat-shrink tubing and wire clamps.



## 2-Gauge Wiring Kit **50-830**

With Black Switch Panel/Master Disconnect.





**4-Gauge Wiring Kit 50-235**

QuickCar's 4-gauge wiring kit is sold with the 50-102 ignition control panel, 4-AWG battery cable, wiring harness, 55-009 master disconnect switch, solenoid, top-mount battery terminals, ring terminals, heat-shrink tubing, and wire clamps.

**4-Gauge Wiring Kit 50-835**

With Black Switch Panel/Master Disconnect.

**2-Gauge Wiring Kit Less Master Disconnect 50-234**

Heavy-duty, 2-gauge wiring kit includes standard 50-102 switch panel, 50-200 wiring harness, solenoid, top-mount battery terminals, ring terminals, heat-shrink tubing, and wire clamps. Master disconnect sold separately.



## **2-Gauge Wiring Kit 50-834**

With Black Switch Panel/Less Master Disconnect.



## **4-Gauge Wiring Kit Less Master Disconnect 50-236**

Four-gauge wiring kit is sold with standard 50-102 ignition control panel, 4-gauge battery cable, wiring harness, solenoid, top-mount battery terminals, ring terminals, heat-shrink tubing, and wire clamps. Master disconnect sold separately.



## **4-Gauge Wiring Kit 50-836**

With Black Switch Panel/Less Master Disconnect.

## Tire Pressure Gauges

The QuickCar 2-1/2" diameter tire pressure gauge is regarded as the most reliable in the industry. Offered with a choice of Dry, Glow, or Liquid-Filled face. High-quality gauges feature pressure-relief valves, rubber shock rings, 14" long hoses with strain reliefs on each end and a 45° air chuck.

### Dry Gauges

Part No.	Description
56-020	0-20 PSI
56-040	0-40 PSI
56-060	0-60 PSI



### Glow Gauges

Part No.	Description
56-022	0-20 PSI
56-042	0-40 PSI
56-062	0-60 PSI



### Liquid-Filled Gauges

Part No.	Description
56-021	0-20 PSI
56-041	0-40 PSI
56-061	0-60 PSI



### Economy Digital Tire Pressure Gauge 56-070

Economically-priced digital tire pressure gauge, gauge measures 0-100 PSI in 1/2 lb. increments and uses an auto-off feature for extended battery life. More shock-resistant than analog-style gauges, gauge includes a 14" long hose with 45° air chuck and bleeder for quick pressure adjustments.



### Digital Tire Pressure Gauge 56-085

The most accurate tire pressure gauge currently offered by QuickCar is calibrated to .5% accuracy. Gauge reads in PSI, Bar, KG, or KPA, incorporates an easy-to-read backlit screen, auto shut-off for extended battery life, and a premium, 14" long hose with a 45° angled air chuck. 0-60 lb. gauge.



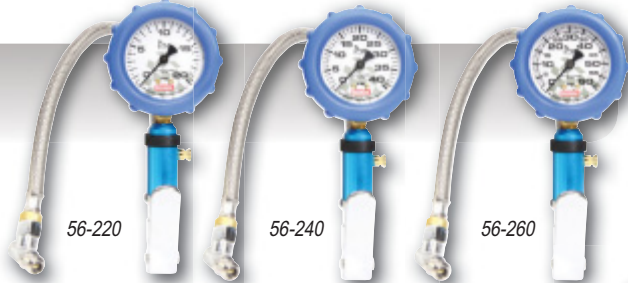


## Tire Inflators

Check tire pressures while inflating or deflating tires. Precision tire inflators include air-release buttons, stainless steel braided air hoses, chrome-plated angle chucks, and choice of Dry, Glow, or Liquid-Filled gauge heads in 0-20 PSI, 0-40 PSI, and 0-60 PSI versions. Digital Tire Inflators are also available, incorporating easy-to-read backlit screens, auto shut-off feature for extended battery life, and accuracy calibrated to .5%.

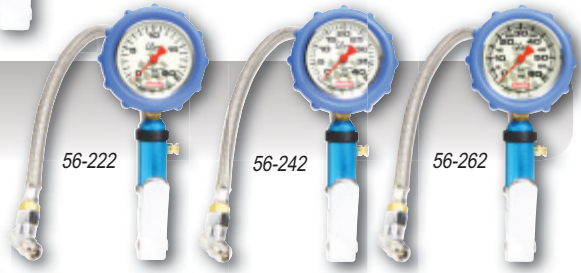
### Dry Heads

Part No.	Description
56-220	0-20 PSI
56-240	0-40 PSI
56-260	0-60 PSI



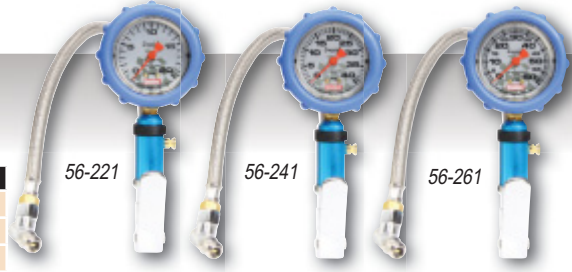
### Glow Heads

Part No.	Description
56-222	0-20 PSI
56-242	0-40 PSI
56-262	0-60 PSI



### Liquid Filled Heads

Part No.	Description
56-221	0-20 PSI
56-241	0-40 PSI
56-261	0-60 PSI



### Digital Heads

Part No.	Description
56-270	0-100 PSI
56-285	0-60 PSI



### Tire Pressure Gauge Replacement Parts

Part No.	Description	Part No.	Description	Part No.	Description
56-001	14" Flex Hose With Pressure Relief	56-0022	Gauge Head, Glow 0-20 PSI	56-0041	Gauge Head, Liquid-Filled 0-40 PSI
56-002	Gauge Head, Dry 0-20 PSI	56-0042	Gauge Head, Glow 0-40 PSI	56-0061	Gauge Head, Liquid-Filled 0-60 PSI
56-004	Gauge Head, Dry 0-40 PSI	56-0062	Gauge Head, Glow 0-60 PSI	56-003	Rubber Shock Ring
56-006	Gauge Head, Dry 0-60 PSI	56-0021	Gauge Head, Liquid-Filled 0-20 PSI		



### Angle Style Air Chuck 56-9001

Angle style 45° air chuck fits into hard-to-reach areas, easing tire pressure adjustments. Air chuck has 1/4" NPT threads.



### Ball Style Air Chuck 56-9002

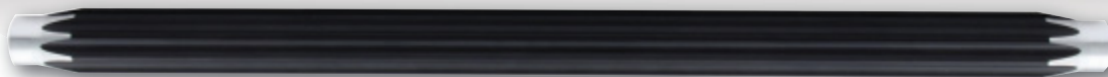
Compact 90° air chuck fits into the tightest, hard-to-reach areas, easing tire pressure adjustments. Air chuck has 1/4" NPT threads.



### Tire Pressure Gauge Holster 56-010

Holster with belt loop keeps your tire gauge conveniently close and safe. May also be mounted in trailer or on tool boxes.

## Aluminum Suspension Tubes



Scan for more information

Manufactured in the USA from rigid 6061 aluminum, QuickCar Suspension Tubes are up to 35% stronger than traditional hex or round units. Suspension tubes include precision-machined ends, corrosion-resistant black anodized finish, and identification on the left-hand threaded end. Unique design allows adjustment by hand or with a wrench. Choose from 21/32" O.D. with 5/16"-24, threads, 8mm-1.25 or 3/8"-24 threads, 1-1/8" O.D. with 5/8"-18 threads, or 1-1/4" O.D. with 3/4"-16 threads.

Length	21/32" O.D.	21/32" O.D.	21/32" O.D.	1-1/8" O.D.	1-1/4" O.D.	Length	21/32" O.D.	21/32" O.D.	21/32" O.D.	1-1/8" O.D.	1-1/4" O.D.
	5/16"-24 Thread	8mm-1.25 Thread	3/8"-24 Thread	5/8"-18 Thread	3/4"-16 Thread		5/16"-24 Thread	8mm-1.25 Thread	3/8"-24 Thread	5/8"-18 Thread	3/4"-16 Thread
6"	31-060	—	—	—	—	23.5"	31-235	—	—	62-235	75-235
6.5"	31-065	—	—	—	—	24"	31-240	—	38-240	62-240	75-240
7"	31-070	—	—	62-070	75-070	24.5"	31-245	—	—	62-245	—
7.5"	31-075	—	—	62-075	75-075	25"	31-250	—	38-250	62-250	75-250
8"	31-080	08-080	38-080	62-080	75-080	25.5"	31-255	—	—	—	—
8.5"	31-085	08-085	38-085	62-085	75-085	26"	31-260	—	38-260	—	75-260
9"	31-090	08-090	38-090	62-090	75-090	27"	—	—	38-270	62-270	75-270
9.5"	31-095	08-095	38-095	62-095	75-095	28"	—	—	38-280	62-280	75-280
10"	31-100	08-100	38-100	62-100	75-100	29"	—	—	—	—	75-290
10.5"	31-105	08-105	38-105	62-105	75-105	30"	—	—	—	—	75-300
11"	31-110	08-110	38-110	62-110	75-110	31"	—	—	—	62-310	75-310
11.5"	31-115	08-115	38-115	62-115	75-115	32"	—	—	—	—	75-320
12"	31-120	08-120	38-120	62-120	75-120	33"	—	—	—	—	75-330
12.5"	31-125	08-125	38-125	62-125	75-125	34"	—	—	—	—	75-340
13"	31-130	08-130	38-130	62-130	75-130	35"	—	—	—	—	75-350
13.5"	31-135	08-135	38-135	62-135	75-135	36"	—	—	—	—	75-360
14"	31-140	08-140	38-140	62-140	75-140	37"	—	—	—	—	75-370
14.5"	31-145	08-145	38-145	62-145	75-145	38"	—	—	—	—	75-380
15"	31-150	08-150	38-150	62-150	75-150	39"	—	—	—	62-390	75-390
15.5"	31-155	08-155	38-155	62-155	75-155	40"	—	—	—	62-400	75-400
16"	31-160	08-160	38-160	62-160	75-160	41"	—	—	—	—	75-410
16.5"	31-165	08-165	38-165	62-165	75-165	42"	—	—	—	—	75-420
17"	31-170	08-170	38-170	62-170	75-170	43"	—	—	—	—	75-430
17.5"	31-175	08-175	38-175	62-175	75-175	44"	—	—	—	—	75-440
18"	31-180	08-180	38-180	62-180	75-180	45.7"	—	—	—	62-457	—
18.5"	31-185	08-185	38-185	62-185	75-185	46.5"	—	—	—	62-465	—
19"	31-190	08-190	38-190	62-190	75-190	47.7"	—	—	—	62-477	—
19.5"	31-195	08-195	38-195	62-195	75-195	48"	—	—	—	62-480	—
20"	31-200	08-200	38-200	62-200	75-200	48.7"	—	—	—	62-487	—
20.5"	31-205	—	—	62-205	75-205	49"	—	—	—	62-490	—
21"	31-210	—	38-210	62-210	75-210	50"	—	—	—	62-500	—
22"	31-220	—	38-220	62-220	75-220	51"	—	—	—	62-510	—
22.5"	31-225	—	—	62-225	75-225	72"	—	—	—	62-600	75-600
23"	31-230	—	38-230	62-230	75-230						

## Double-Ended Suspension Tube Wrench 66-6275

Heavy-duty steel, double-ended wrench allows performing quick adjustments to QuickCar 5/8" or 3/4" threaded suspension tubing.



## Suspension Tube Ruler 66-100

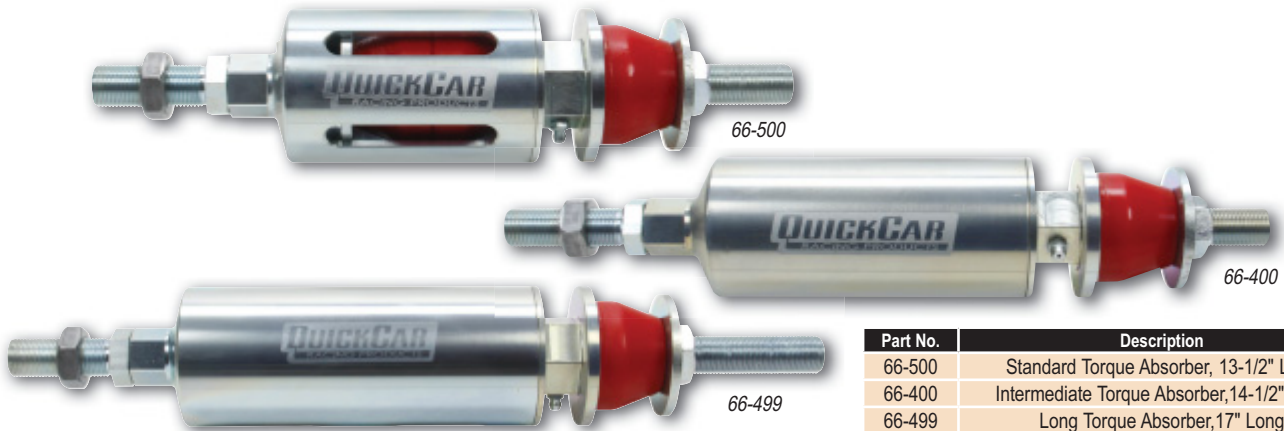
Measure nearly any suspension component fitted with rod ends, including suspension tubes, tie rods, etc., quickly and precisely. Black powder coated ruler includes a locking thumb screw and provides precise measurements up to 36". Sold complete with aluminum adapters to measure components with 1/2", 5/8", or 3/4" rod ends. Optional adapters allow measuring parts with 1/4", 5/16", or 3/8" rod ends.

Part No.	Description
66-105	Ruler Adapters, Allows Measuring Components With 1/4", 5/16", Or 3/8" Rod Ends
66-106	Ruler Adapters, Allows Measuring Components With 1/2", 5/8", Or 3/4" Rod Ends (Included With 66-100)



## Torque Absorbers

Track-proven to increase forward bite out of the turns with sustained traction down the straightaway, QuickCar's torque absorbers are IMCA-legal, and are lighter than spring-style units. CNC-machined units feature internal brass bushing and grease fittings to eliminate any possibility of bind, while the specially-threaded cap allows easy biscuit changes. Offered in three versions: Standard, uses two interior biscuits and is 13-1/2" long; Intermediate, uses three interior biscuits and is 14-1/2" long; and Long, uses four interior biscuits and is 17" long. Softer or harder durometer biscuits may be purchased separately for tuning purposes.



Part No.	Description
66-500	Standard Torque Absorber, 13-1/2" Long
66-400	Intermediate Torque Absorber, 14-1/2" Long
66-499	Long Torque Absorber, 17" Long

## Torque Absorber Biscuits

QuickCar torque absorber biscuits come in a variety of hardnesses to tune for different track conditions. Biscuits are sold individually, or in the kit 66-508 which includes 2 blue, 2 yellow, 2 red, and 2 black.

Part No.	Description
66-501	Extra Soft Blue Biscuit, Each
66-509	Extra Soft/Soft Green Biscuit, Each
66-502	Soft Yellow Biscuit, Each
66-503	Medium/Soft Orange Biscuit, Each
66-504	Medium Red Biscuit, Each
66-506	Hard Black Biscuit, Each
66-508	KIT Includes Blue (2), Yellow (2), Red (2), Black (2)



## Travel Indicator 66-512

Specialized tool fits QuickCar and other small O.D. torque absorbers, and is used to determine travel of the unit during acceleration and braking. Installs easily. Sold complete with indicator rod, two indicator mounting brackets, and required hardware.



## Torque Absorber Covers

Durable nylon covers keep dirt and debris out of QuickCar torque absorbers, while also preventing prying eyes from viewing biscuit colors and combinations. Covers may be easily installed or removed, and secure with Velcro.

Part No.	Description
66-520	Cover For 66-500, Standard 12-1/2" Long Torque Absorber
66-530	Cover For 66-499, Long 14" Long Torque Absorber



## Outlaw Torque Absorber Biscuits

Choose from four different rates. Biscuits are 3" diameter.

Part No.	Description
66-551	Extra-Soft Blue Biscuit (Each)
66-552	Soft Yellow Biscuit (Each)
66-554	Medium Red Biscuit (Each)
66-556	Hard Black Biscuit (Each)





**Steering Wheels**

Quality dished aluminum or steel spoked steering wheels are offered with a choice of smooth red, blue, or black grips. Choose from 15" or 17" diameter.



**Steel**

15"			
Steel		Aluminum	
68-003	Black	68-001	Black
68-0031	Red	68-0011	Red
68-0032	Blue	68-0012	Blue



**Aluminum**

17"			
Steel		Aluminum	
68-004	Black	68-002	Black
68-0041	Red	68-0021	Red
68-0042	Blue	68-0022	Blue

**Lightweight Steering Wheels**

Lightweight, 15" diameter aluminum steering wheels are drilled and shot-peened to reduce weight and increase grip. Steering wheels weigh less than 1 lb. and include a 1-1/2" dish. Choose from natural or black powder coated.

Part No.	Description
68-005	Natural Finish Steering Wheel
68-006	Black Finish Steering Wheel



## Molded Steering Wheel Pad **58-244**

Molded black pad fits flat or dished three-spoke steering wheels. Secures with Velcro.



## Steering Wheel Kill Switch **50-190**

Designed for steering wheel mounting, provides driver the ability to quickly disable ignition system in the event of a crash.



## Steering Wheel Pad **58-245**

Black vinyl-covered foam pad attaches to most three-spoke racing steering wheels and offers added protection to the driver in the event of a crash. Pad is 5-3/4" diameter x 2" thick and attaches directly with three hook/loop straps.

## Steering Wheel Disconnects

Lightweight, anodized aluminum disconnects allow quick removal or replacement of the steering wheel, often required to allow driver entry or exit. Designed for use with popular 3-bolt steering wheels and 3/4" diameter steering shafts, disconnects are sold complete with weld-on steel hub adapter.

## Hex Hub 360 Degree Aluminum Disconnect **68-012**

Comes complete with hardware and fasteners.



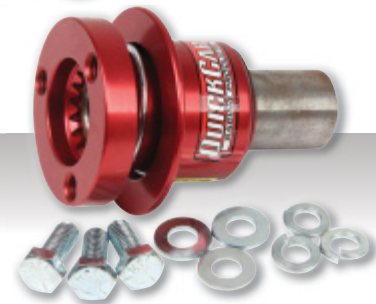
## Hex-Hub Button Style Aluminum Disconnect **68-010**

Hex-hub button-style aluminum disconnect.



## Fine Spline Hub 360 Deg. Aluminum Disconnect **68-015**

Comes complete with hardware and fasteners.



## Weld-On Hub Steel Adapters

Also available separately, adapters are specifically made for QuickCar disconnects. Welds to 3/4" O.D. steering shaft.

Part No.	Description
68-0109	Fits Hex-Hub Button-Style (68-010)
68-0129	Fits Hex-Hub 360° Style (68-012)
68-0159	Fits Fine Spline-Hub 360° Style (68-015)



68-0109



68-0129



68-0159

Tire prep and selection are key to winning races and QuickCar offers a variety of tools to closely monitor them.

## Chrome Valve Stems

Premium chrome valve stems are sold individually or in four packs.



Part No.	Description
56-115	Chrome Valve Stem, Each
56-116	Chrome Valve Stems, Four Pack



## Aluminum Valve Core Tool 56-100

Pocket-sized tool allows quick removal or replacement of valve cores. Tool is manufactured from durable billet aluminum and red anodized finished for corrosion resistance.

## Valve Core Remover 56-119

Compact, convenient tool allows quick valve core replacement and valve stem repair.



## Aluminum Toe Plates 64-704

Simple, yet accurate. Simply lean against each front tire and measure the distance between the two. Includes (2) 12' tape measures.

Part No.	Description
64-703	Replacement Tape Measure

## Tire Marker Kit 64-401

Perfect for marking sizes, circumferences, and locations, kit includes a silver tire pen and white tire marker.



Part No.	Description
64-400	White Tire Marker
64-403	Silver Tire Pen

## Aluminum Tire Caliper 64-706

Lightweight aluminum tire caliper measures circumference quickly and accurately, from 65" to 115".





## Tire Management Kit 56-105

All-in-one kit includes deluxe tire durometer (56-155), tire tread depth gauge (56-104), and tire tape (56-110), all in a foam-lined plastic storage case.



## Tire Tread Depth Gauge 56-104

Monitor tire wear and ensure that your complete tire patch has maximum track contact. Durable, aluminum-housed gauge includes professional scale graphics and allows measuring tread depth in 1/32" increments. Sold complete with carrying pouch.



## Deluxe Tire Durometer 56-155

Determine tire hardness effectively and accurately. Gauge has a range of 0-100 durometer and is sold with carrying pouch.

## Digital Tire Tread Depth Gauge 56-102

Determine tread depth quickly and effectively. Precision gauge includes a digital display in decimals or fractions, while the non-rocking, billet aluminum base helps ensure accurate measurements.



## Tire Tape

Hawk tip tire tape grabs onto the edge of virtually any surface, allowing easy measurements by just one person. Tape has a magnetic back and measures up to 10'.

Part No.	Description
56-110	Hawk Tip Tire Tape
56-111	Hawk Tip Tire Tape, Carded

### Deluxe QuickAngle Tray

A replacement for the Smart Tray, the Deluxe QuickAngle Tray has added features including legs that attach directly to trailing arms, tie rods, or chassis tubing, while the two-step base plate accepts the Smart Tool or other similar digital angle finders. Deluxe QuickAngle Tray offers digital, hands-free accuracy and is a great aid when determining angles, or while bending chassis tubing. Four versions are available to fit 1", 1.25", 1.50", or 1.75" dia. tubing. Legs may be changed to adapt tray to use with different size tubing.



Part No.	Description
56-167	Fits 1.25" O.D. Tubing
56-168	Fits 1.50" O.D. Tubing
56-169	Fits 1.75" O.D. Tubing
56-170	Fits 1.00" O.D. Tubing

#### Replacement Legs

Part No.	Description
56-9141	1.25" Leg, Each
56-9143	1.00" Leg, Each
56-9144	1.50" Leg, Each
56-9145	1.75" Leg, Each



### QuickAngle Kit

Kit includes both the Smart Tool and the Deluxe QuickAngle Tray in a handy foam-lined carrying case. Provides digital, hands free, accuracy when determining the angles of chassis tubing, driveshafts, etc. Available with trays to fit either 1.25" or 1.00" chassis tubing.

Part No.	Description
56-161	Fits 1.25" O.D. Tubing
56-162	Fits 1.00" O.D. Tubing

### Smart Tool Digital Level 56-163

Ensure that chassis tubing, driveshaft angles, and suspension components are level and plumb. Particularly useful during chassis fabrication. Tool emits an audible beep at level and plumb, and shuts off automatically.



### A-Arm Shim Kit 56-124

Kit includes one each of 1/16", 1/8", 1/4", and 1/2" aluminum upper A-arm shims with 6" centers and installation tabs. Shims are also available separately.



#### Kit Includes

Part No.	Description
56-120	1/16" Shim
56-121	1/8" Shim
56-122	1/4" Shim
56-123	1/2" Shim

### Caster/Camber Gauge

Precision-calibrated, Caster/Camber gauge is made from fully CNC-machined billet aluminum. Assembled on a 360° level bench, gauge measures up to 6° of camber and up to -4° to 12° of caster.

#### Caster/Camber Gauge Kits

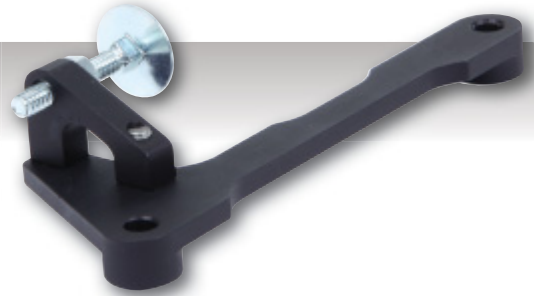
Part No.	Description
56-830	Caster/Camber Gauge with Magnetic Adapter
56-831	Caster/Camber Gauge, No Adapter
56-833	Caster/Camber Gauge with Wide 5 Adapter
56-834	Caster/Camber Gauge with Kart Adapter
56-835	Caster/Camber Gauge with GM Adapter
56-836	Caster/Camber Gauge with Small Ford Adapter
56-837	Magnetic Adapter Only
56-838	GM Adapter Only, 3/4"-20
56-839	Ford Adapter Only, 13/16"-20
56-842	Legends Adapter Only, 19mm-1.5
56-843	Small Ford Adapter Only, 3/4"-16
56-844	Wide 5 Adapter Only, 1.813"-16
56-845	Kart Adapter Only, 5/8"-18



## Throttle Stop Brackets

Offered for popular Holley carburetors, rigid fully CNC-machined black anodized aluminum bracket includes adjustable throttle stop.

Part No.	Description
64-157	For Holley 4bbl.
64-158	For Holley 2bbl.



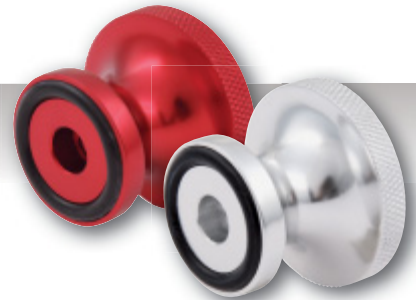
## Throttle Return Spring Kit **65-096**

Includes carb mount bracket, (4) return springs, and required hardware.

## Tall Aluminum Carburetor Nut With O-Ring Seal

Carb nut includes 5/16" threads. Choose from red anodized or natural finish.

Part No.	Description
64-148	Red
64-149	Aluminum

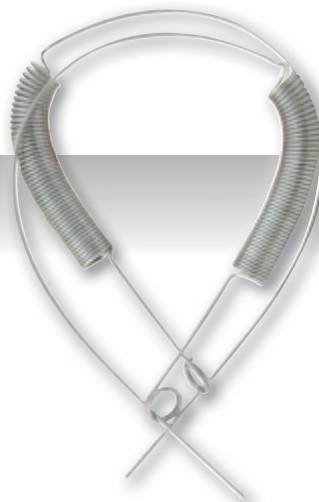


## Aluminum Carburetor Hat **64-146**

Durable machined aluminum carb hat protects engine from dirt and debris when air cleaner has been removed.

## Throttle Return Springs **64-169**

Includes (2) throttle return springs.





### Timing Systems

Timing systems include clipboard, choice of two stop watches, (5) qualifying sheets, and (5) lap chart sheets, and choice of acrylic or aluminum clipboard. QuickCar acrylic or aluminum clipboard timing systems are visually unique, comfortable to hold, and durable.

### Dual Timing Systems

Dual timing systems are complete with (2) Robic SC505 stop watches, acrylic clipboard, (5) qualifying sheets, and (5) lap chart sheets. Choose from systems with red, black, yellow, white, or aluminum clipboards.

Part No.	Description
51-051	Red
51-052	Black
51-053	Yellow
51-054	White
51-070	Aluminum



### Replacement Parts



### Robic SC505 Stop Watches

The SC505 series includes a 12-lap memory and auto lap counter. Choose from red, black, yellow, or blue.

Part No.	Description
51-037	Red
51-038	Black
51-039	Yellow
51-040	Blue

### Clipboards

Our clipboards are so easy to hold, practical, and attractive that everyone at the track will want one. Choose from acrylic units in red, black, yellow, or white, or a satin aluminum model.

Part No.	Description
51-041	Red Acrylic
51-043	Black Acrylic
51-044	Yellow Acrylic
51-046	White Acrylic
51-048	Aluminum



51-041

51-043

51-044

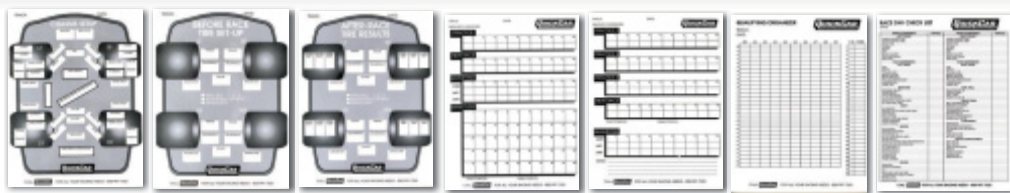
51-046

51-048

### Lap Chart Pads

Lap charts are used to record lap times for practice, heat races, and feature events. Each pad includes 50 sheets.

Part No.	Description
51-201	Chassis Set-Up
51-210	Before Race
51-215	After Race
51-230	50-Lap
51-235	100-Lap
51-236	Qualifying Organizer
51-237	Race Day Check List



51-201

51-210

51-215

51-230

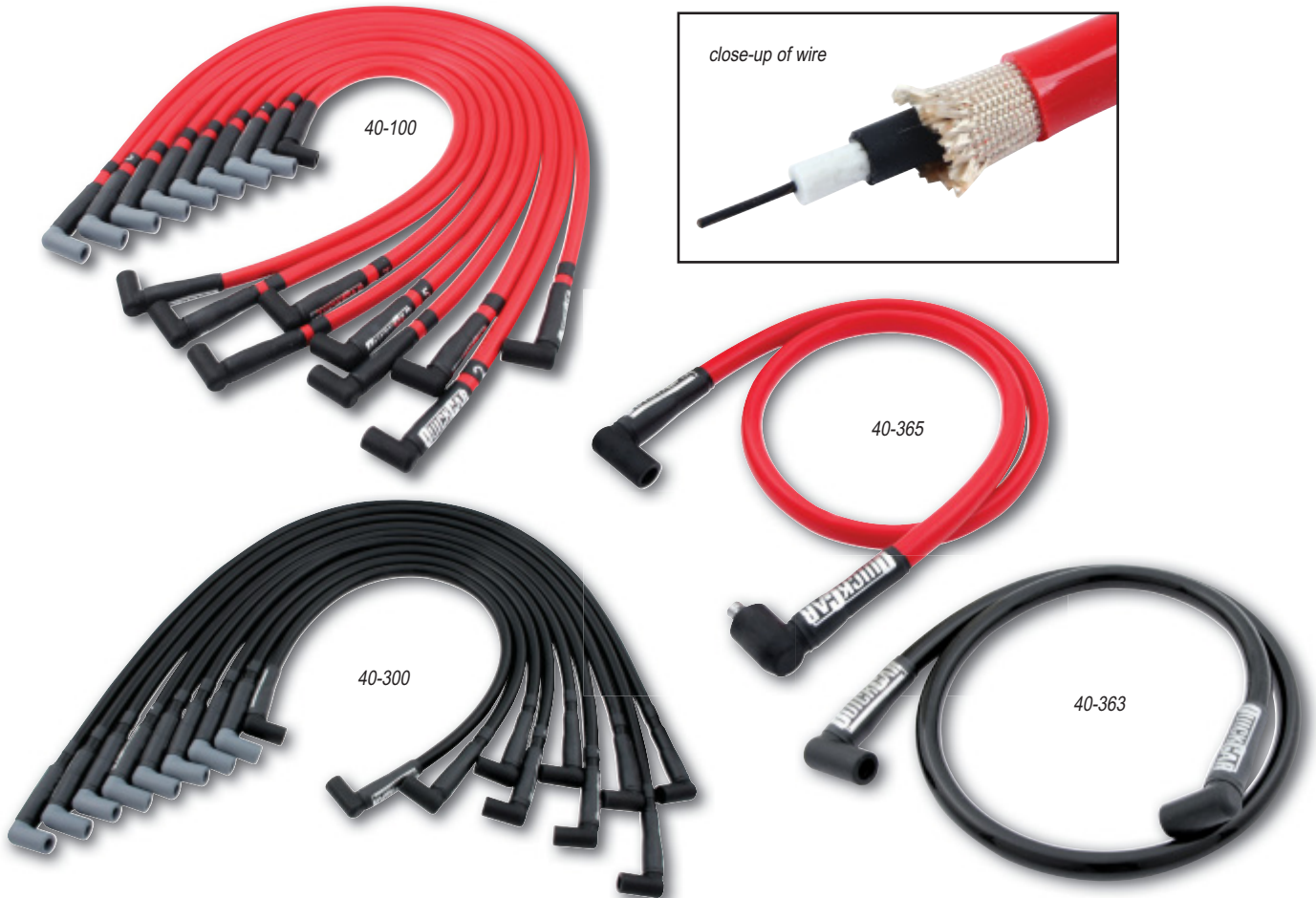
51-235

51-236

51-237

## Sleeved Race Spark Plug Wire

Premium-quality spark plug wire offers quick energy transfer, less than 40 ohms/ft. of resistance, and high EMI (Electro Magnetic Interference) and RFI (Radio Frequency Interference) suppression. Flexible, high-strength wire is constructed using a Kevlar core and nickel-copper alloy-wound conductor that is covered with two full layers of silicone, resulting in a 11.5mm O.D., while the impregnated fiberglass insulation provides up to 1,400°F of heat resistance. High-temperature silicone boots resist temperatures up to 600°F, with posi-snap terminals to provide a secure connection. Cylinder numbers are labeled on both ends. Compatible with most ignition systems.



Part No.	Description
40-100	SB Chevy Wire Set, Red, 24" Coil Wire
40-300	SB Chevy Wire Set, Black, 24" Coil Wire
40-150	SB Chevy Wire Set, Red, Without Coil Wire
40-350	SB Chevy Wire Set, Black, Without Coil Wire
40-121	Red Coil Wire, 12" HEI/HEI
40-123	Black Coil Wire, 12" HEI/HEI
40-125	Red Coil Wire, 12" HEI/Socket
40-127	Black Coil Wire, 12" HEI/Socket
40-181	Red Coil Wire, 18" HEI/HEI
40-183	Black Coil Wire, 18" HEI/HEI
40-185	Red Coil Wire, 18" HEI/Socket
40-187	Black Coil Wire, 18" HEI/Socket
40-241	Red Coil Wire, 24" HEI/HEI
40-243	Black Coil Wire, 24" HEI/HEI
40-245	Red Coil Wire, 24" HEI/Socket
40-247	Black Coil Wire, 24" HEI/Socket

Part No.	Description
40-361	Red Coil Wire, 36" HEI/HEI
40-363	Black Coil Wire, 36" HEI/HEI
40-365	Red Coil Wire, 36" HEI/Socket
40-367	Black Coil Wire, 36" HEI/Socket
40-421	Red Coil Wire, 42" HEI/HEI
40-423	Black Coil Wire, 42" HEI/HEI
40-425	Red Coil Wire, 42" HEI/Socket
40-427	Black Coil Wire, 42" HEI/Socket
40-481	Red Coil Wire, 48" HEI/HEI
40-483	Black Coil Wire, 48" HEI/HEI
40-485	Red Coil Wire, 48" HEI/Socket
40-487	Black Coil Wire, 48" HEI/Socket
40-601	Red Coil Wire, 60" HEI/HEI
40-603	Black Coil Wire, 60" HEI/HEI
40-605	Red Coil Wire, 60" HEI/Socket
40-607	Black Coil Wire, 60" HEI/Socket

## Brake Bias Gauge Panels

Brake bias gauge panels are fitted with two 1-1/2" diameter, liquid-filled pressure gauges that read from 0-1,500 PSI, allowing driver to track pressure at both the front and rear calipers. Panels include bleeders to evacuate air from the system.



### Vertical Mini Brake Bias Gauge 61-101

Vertical design panel is 2-3/4" wide x 4-1/2" high.

### Horizontal Mini Brake Bias Gauge 61-103

Horizontal design panel is 4-1/2" wide x 2-3/4" high.



### Vertical Mini Brake Bias Gauge 61-105

Vertical design panel is 2-3/4" wide x 4-1/2" high. Black.



Replacement Gauge 611-90



### Brake Bleeder Bottle 66-700

Eliminates messy brake bleeding. Bleeder bottle has a high-grade surgical hose for a secure seal on bleeders and includes an extra nipple to put your hose on once bleeding is complete. Steel lanyard allows hanging bottle on chassis during bleeding process.

## Brake Caliper Pressure Test Kits



Brake system troubleshooting tool allows checking brake pressure at the caliper, quickly and accurately. Each kit is packed in a neat, foam-lined case.



Part No.	Description
64-510	1/8" NPT, Most Aftermarket Calipers
64-511	10mm-1.50, GM Metric Calipers



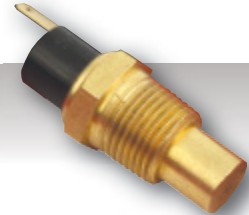


## Electric Fan Relay Kit **60-039**

Kit includes 40-amp relay, water temperature sender switch, and wiring harness.

## 200° Temperature Sender **60-040**

Single-wire water temperature sender switch is preset to turn on at 200°F. Sender has 1/2"NPT threads.



## NACA Ducts

Designed specifically for ducting air into the car, providing air flow to cool the driver, brakes, rear end cooler, etc. Ducts may be mounted to virtually any flat surface and accept a 3" diameter hose.



Part No.	Description
60-000	Single Clear
60-003	Single Black
60-010	Dual Clear

## Bumper Ducts

Bumper ducts direct air flow to brakes, preventing overheating and prolonging brake life. Durable and easy to install.



Part No.	Description
60-008	Single
60-009	Dual
60-005	Headlight Duct

## NACA Duct Hose

Wire reinforced 3" diameter duct hose will not collapse and is used to deliver continuous air flow to high-temperature areas.

Part No.	Description
60-020	Neoprene Hose For Standard Temperatures, 10' Long
60-030	Silicone Hose For Extreme Temperatures, 11' Long



### **Brunnhoezl Aluminum Jack** **64-086**

Deluxe, lightweight billet aluminum 3-pump jack is manufactured in the USA. Hand-assembled and tested prior to shipment. Completely rebuildable.



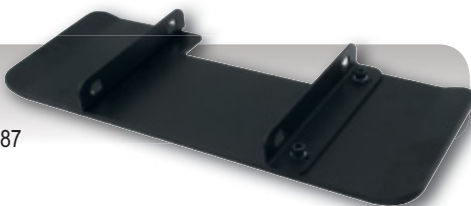
### **Aluminum 6-Pump Pit Jack** **64-087**

Lightweight, high-quality aluminum 6-pump jack features a 3,000 lb. capacity. Low-profile jack rolls under the lowest slung race chassis, with a maximum lifting height of 17-1/2".



### **Dirt Wing** **64-088**

Provides a sturdy platform when using the 64-087 pit jack on soft or uneven surfaces.



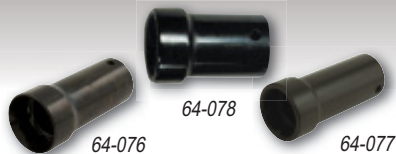
### **Oil Filter Cutter** **64-730**

Quickly open oil filters to check for potential engine problems. Heavy-duty, billet aluminum tool features a razor-sharp, hardened cutter for an extended life.



### **Pit Sockets**

The same steel 1/2" drive sockets used by many top racing teams.



Part No.	Description
64-076	1" Socket, 3-1/4" Long
64-077	Pro 1" Socket, 3-1/4" Long
64-078	Pro 1" Socket, 2-1/4" Long

### **Cleco Fasteners**

Pin-style fasteners provide quick, easy installation of sheet metal during initial fitting. May be used with material up to 1/4" thick.



Part No.	Description
64-175	1/8" Clecos, 25 Pack
64-176	3/16" Clecos, 25 Pack

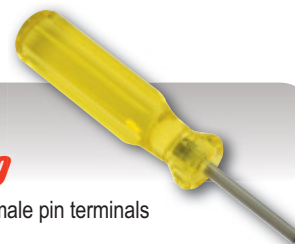
### **Cleco Pliers** **64-180**

Specialized tool is used to install or remove Cleco fasteners.



### **Weatherpack Terminal Tool** **50-399**

Tool is used to remove male and female pin terminals from Weatherpack connectors.



### **Valve Core Tool** **56-100**

Convenient, pocket-sized tool allows quick removal and replacement of valve cores. Tool is manufactured from durable billet aluminum with a red anodized finish for corrosion resistance.



### **Ratcheting Crimper Pliers** **50-395**

Crimps to a wide variety of electrical terminals including insulated, non-insulated, Weatherpack, small gauge, or spark plug wire. Unique design allows quick jaw changes without the need for tools. Rigid, heavy-duty pliers also have an adjustment for crimping pressure.



**Heavy Duty Automatic Wire Stripper Pliers 50-393**



Heavy-duty 6" pliers quickly strip 8-18 gauge wires for termination. A bolt-on depth-adjustment guide provides consistent, reliable strip length.

**Impact Crimper 64-020**

Tool is designed for crimping standard power rings onto battery cables for a permanent termination.



**Tire Tape**

Hawk tip design securely grabs onto virtually any surface and won't pull loose. Includes a magnetic back and measures up to 10'.

Part No.	Description
56-110	Tire Tape
56-111	Tire Tape, Carded



56-110

**Ride Height Gauge Checker 56-108**

Back by popular demand. Place the pocket-sized ride height gauge under the frame and press the button; an etched stem pops out to show the ride height. Measures ride heights from 3-1/2" to 6".



**Safety Wire 64-015**

Includes 1 lb. of .032" diameter safety wire.

**Safety Wire Pliers 64-010**

Rugged pliers include an end bearing for smoother, faster twisting, particularly in tight areas where a second pull is needed.



**AN Aluminum Angle Head Wrench Set 64-709**

Aluminum AN wrenches feature an angle head design for improved fitting access. Five-piece set includes -6AN, -8AN, -10AN, -12AN, and -16AN.



**AN Aluminum Wrench Set 64-708**

Five-piece aluminum wrench set includes -6AN, -8AN, -10AN, -12AN, and -16AN.





## Roll Bar Padding

Closed-cell foam progressively absorbs shock and increases density as it is compressed. Offset inside diameter allows installing thicker padding toward driver for added protection. Sold in 3' lengths.

Part No.	Description
58-231	Red
58-221	Red, Case Of 12
58-232	Blue
58-222	Blue, Case Of 12
58-233	Black
58-223	Black, Case Of 12
58-234	Yellow
58-224	Yellow, Case Of 12
58-235	Orange
58-225	Orange, Case Of 12



## SFI-Approved Roll Bar Padding

Fire-resistant roll bar padding meets SFI 45.1 specifications, won't melt in the event of a fire, and offers 180° coverage to roll bar tubing. Sold in 3' lengths. Offered in black only.

Part No.	Description
58-211	1-5/8" To 2" O.D. Roll Bar Padding
58-212	1-1/4" To 1-3/4" O.D. Roll Bar Padding



## Nylon Wire Ties

Secure roll bar padding, electrical wiring, gauge lines, etc. Heavy-duty, 14" long wire ties are sold in bags of 100.

Part No.	Description
58-237	Black
58-238	Red
58-239	Blue
58-240	Yellow

## Premium Black Cable Ties 58-250

Black 15" long cable ties are made from weather-resistant nylon and include metal locking barbs in head to provide a reliable locking force. Domed-top ties include smooth edges and a high-strength, low-thread force. Sold in packs of 50.



## Fireproof Shifter Boot 60-045

Shifter boot prevents heat or flames from entering the driver's compartment. Sold complete with mounting plate kit.

**Carburetor Box 64-140**

Protect expensive carburetors from dirt and debris. Ideal for storage or transport, container accepts popular Holley 4150/4160 4bbl. carburetors and includes a locking lid.



**Plastic Carburetor Tray 64-150**

Tray sets directly atop carburetor, protecting engine when air cleaner has been removed, while providing a convenient spot for tools or components when servicing engine.



**Radio Boxes**

Aluminum radio box has a padded insert to absorb vibration. Accepts most racing radios and clamps directly to roll bar tubing.

Part No.	Description
66-923	1.75" Tube Mount
66-931	1.50" Tube Mount



**Helmet Hook**

Lightweight anodized aluminum hooks clamp directly to roll bar, and provides an anchor for helmet strap.

Part No.	Description
66-920	1-3/4" Tube Mount
66-936	1-1/2" Tube Mount



66-925

**Aluminum Coil Clamps**

Anodized aluminum bracket allows mounting of ignition coil directly to firewall or chassis tubing.

Part No.	Description
66-925	Firewall Mount
66-927	1-3/4" Tube Mount
66-929	1-1/2" Tube Mount



**Vent Clamps**

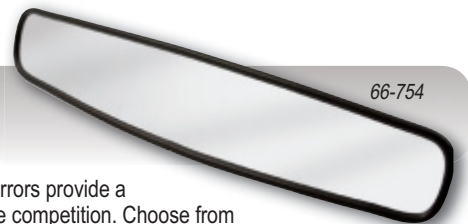
Clamp-on breather, ideal for use with transmissions, rear ends, etc. clamps directly to chassis tubing.

Part No.	Description
66-937	1-3/4"
66-938	1-1/2"
66-9381	Replacement Element

**Convex Mirrors**

Special convex mirrors provide a wide rear view of the competition. Choose from 14" or 17" wide mirrors.

Part No.	Description
66-754	14" Wide Mirror Only
66-757	17" Wide Mirror Only



66-754

**Roll Bar Clamp Reducer 66-908**

Lightweight aluminum reducer is used to adapt existing radio boxes, drink bottle holders, etc. from 1-3/4" to 1-1/2" diameter tubing.



<b>A</b>	<b>E Cont.</b>	<b>M Cont.</b>	<b>T</b>
A-Arm Shim Kit ..... 76	Electrical Wire ..... 56	Mounting Plate, Ignition ..... 54	Tachometers ..... 26, 27
Air Ducts ..... 81	Terminals ..... 56-58	MSD Box Quick Release ..... 54	Tape Measure ..... 74, 75, 83
Alternator Wire Boot ..... 63	Stripper ..... 59, 83	<b>N</b>	Temperature Adapters ..... 29
Aluminum Jack ..... 82	Extreme	NACA Duct ..... 81	Terminals, Electrical ..... 56-58
Dirt Wing ..... 82	Gauge/Panel ..... 16-19, 33	Nylon Ties ..... 84	Throttle Return Springs ..... 77
AN Wrenches ..... 83	LED Digital Tachometer ..... 26	<b>O</b>	Throttle Stop ..... 77
<b>B</b>	<b>F</b>	Oil Filter Cutter ..... 82	Timing Systems ..... 76
Battery Cable ..... 56	Fan Relay Kit ..... 81	Oil Temperature Manifold ..... 31	Tire
Crimper ..... 57, 83	Firewall	<b>P</b>	Caliper ..... 74
Ends ..... 56	Grommet ..... 63	Pilot Light ..... 50	Chucks ..... 69
Ground ..... 56	Sensor Junction ..... 6	Pit Jack ..... 82	Durometer ..... 65
Kits ..... 56	Fittings, AN/NPT ..... 29, 31	Pit Socket ..... 82	Gauges ..... 68-69
Quick Disconnect ..... 62	Fuel Pressure Isolator ..... 30	Power Distribution Post ..... 61	Replacement Parts ..... 69
Stud Feed-Thru ..... 62	Fuses ..... 50	Pressure Line Kit ..... 32	Gauge Holster ..... 69
Terminals ..... 60	<b>G</b>	<b>Q</b>	Inflators ..... 69
Battery Charging Posts ..... 60	Gator Clamp ..... 57	Qualifying Organizer ..... 78	Management Kit ..... 75
Mounting Bracket ..... 60	Gauges	QuickAngle Tray ..... 76	Markers ..... 74
Battery Disconnect ..... 62	Alignment ..... 76	Quick Release, Steering ..... 73	Tape ..... 75, 83
Boots ..... 62	Brake Bias ..... 80	<b>R</b>	Toe Plates ..... 74
Feed-Through Stud ..... 62	Digital Panel ..... 12-15	Race Wire ..... 56	Toggle Switch ..... 50
Jumper Wire ..... 62	Extreme Panel ..... 16-19, 26	Radio Box ..... 85	Aircraft Cover ..... 50
<b>Brake</b>	Mini ..... 31, 80	Rear View Mirror ..... 85	Boot ..... 50
Bias Gauges/Panels ..... 80	Open Wheel Panel ..... 5, 35, 37	Remote Electrical Outlets ..... 63	Extension ..... 41
Bleeder Bottle ..... 80	Redline Panel ..... 6-11	Remote Start Button ..... 59	<b>Tools</b>
Caliper Pressure Kit ..... 80	Replacement ..... 7, 13, 17, 21,	Replacement Gauges	AN Wrenches ..... 83
Harness ..... 54	32, 34, 36, 80	Auto Meter ..... 36	Crimper Pliers ..... 59, 83
Brake/Bumper Duct ..... 81	Standard Panel ..... 20-25	Digital ..... 13	Impact Crimper ..... 57, 83
Hose ..... 81	Sprint ..... 34-37	Extreme ..... 14	Oil Filter Cutter ..... 82
Buss Bar ..... 61	Tire ..... 68, 69	Redline ..... 7	Pit Sockets ..... 82
<b>C</b>	Grommets ..... 37, 63	Sprint ..... 34-37	Safety Wire Pliers ..... 83
Cable Tie ..... 84	Ground Cables ..... 56	Standard ..... 21	Valve Core Tool ..... 74, 82
Carbon Fiber Panel ..... 33, 34, 36	<b>H</b>	Resettable Circuit Breaker ..... 48	Weatherpack ..... 58, 82
Carburetor	Heat-Shrink Tubing ..... 57	Ride Height Gauge ..... 83	Wire Strippers ..... 59, 83
Box ..... 85	Helmet Hook ..... 85	Roll Bar Padding ..... 84	Wrenches, AN ..... 74
Hat ..... 77	Hose Adapter ..... 30	Roll Bar Clamp Reducer ..... 85	Torque Absorbers ..... 71
Nut ..... 77	Hub Adapter ..... 73	<b>S</b>	Biscuits ..... 71
Return Spring ..... 77	Hydraulic Jack ..... 82	Safety Wire ..... 83	Covers ..... 71
Throttle Stop ..... 77	<b>I</b>	Pliers ..... 83	Travel Indicator ..... 71
Tray ..... 85	Ignition Box Mounting Plate ..... 54	Senders, Pressure/Temperature	Tread Depth Gauge ..... 75
Caster/Camber Gauge ..... 76	Ignition Control Panel ..... 38-48	Mechanical ..... 17, 20	<b>U</b>
Adapters ..... 76	Mounting Bracket ..... 43	Electric ..... 7, 13	Under-Car Light Kit ..... 55
Charging Posts ..... 60	Wiring Harness ..... 40, 49, 52, 53	Shifter Boot ..... 84	<b>V</b>
Mounting Bracket ..... 60	Ignition Switch ..... 48	Smart Tool ..... 76	Valve Stems ..... 74
Chassis Height Gauge ..... 83	Start Switch Boot ..... 50	Solenoid, Starter ..... 62	Core Remover ..... 74
Check Lists ..... 76	Start Switch ..... 50	Spark Plug Wire Sets ..... 70	Vent Clamps ..... 85
Circuit Breaker ..... 48, 51	Start Switch w/Harness ..... 59	Starter Solenoid ..... 62	<b>W</b>
Clear Boot ..... 48	Switch Extensions ..... 41	Jumper Wires ..... 62	Warning Lights ..... 30
Clamps, Gator ..... 57	Ignition Wiring Adapter ..... 17	Steering Wheel ..... 72	Kits ..... 30
Clamps, Line ..... 50, 85	Impact Crimper ..... 57, 83	Disconnect ..... 73	Water Pressure Gauge ..... 7, 17, 32
Cleco Fastener ..... 82	<b>J</b>	Kill Switch ..... 73	Weatherpack Connectors ..... 58
Pliers ..... 82	Jack, Hydraulic ..... 82	Pads ..... 73	Crimper ..... 59, 82
Clipboard ..... 78	Dirt Wing ..... 82	Sticker Kits ..... 42, 45	Kit ..... 58
Coil, Ignition	<b>L</b>	Stop Watch ..... 78	Removal Tool ..... 58, 82
Clamp ..... 85	LED Light/Bulb ..... 30	Stud Feed-Through ..... 62	Weatherproof Switch ..... 61
Wire ..... 79	Strips ..... 29, 55	Suspension Tubes ..... 70	Wire, Electrical ..... 56
Control Arm Shim Kit ..... 76	Lights, Warning ..... 30	Ruler ..... 70	Wiring Harnesses ..... 40, 49, 52, 53
<b>D</b>	Line Clamp ..... 50, 85	Wrench ..... 60	Wiring Kits ..... 64-67
Deutsch Connector ..... 54, 59	<b>M</b>	Switches	Wraparound Panels ..... 33
Dirt Wing ..... 82	Manifold, Oil Temperature ..... 31	Pressure ..... 29	Wrenches
Disconnect, Master ..... 5, 61	Master Disconnect ..... 61, 62	Rocker ..... 47	AN ..... 83
Distributor Adapter ..... 54	Boots ..... 60	Temperature ..... 29	Suspension Tube ..... 70
Distributor Wire ..... 53, 57	Jumper Wire ..... 62	Toggle ..... 50	<b>Z</b>
<b>E</b>	Mirror ..... 85	Zip Ties ..... 84	
Electric Fan Relay Kit ..... 81			
Electrical Outlet ..... 63			



# PRODUCT INDEX



08-080.....70	38-105.....70	50-053.....38, 49	50-434.....59	50-915.....50	56-0021.....69	56-9141.....76
08-085.....70	38-110.....70	50-102.....38, 49	50-435.....57	50-920.....50	56-0022.....69	56-9143.....76
08-090.....70	38-115.....70	50-103.....38, 49	50-442.....54	50-925.....50	56-003.....69	56-9144.....76
08-095.....70	38-120.....70	50-163.....42, 49	50-500.....50	50-930.....50	56-004.....69	56-9145.....76
08-100.....70	38-125.....70	50-164.....42, 49	50-501.....50	50-960.....50	56-0041.....69	57-008.....56
08-105.....70	38-130.....70	50-165.....42, 49	50-502.....51	50-9715.....48	56-0042.....69	57-009.....56
08-110.....70	38-135.....70	50-166.....42, 49	50-503.....50	50-9720.....48	56-006.....69	57-010.....56
08-115.....70	38-140.....70	50-1711.....44, 49	50-504.....50	50-9725.....48	56-0061.....69	57-011.....56
08-120.....70	38-145.....70	50-1713.....44, 49	50-505.....50	50-9730.....48	56-0062.....69	57-012.....56
08-125.....70	38-150.....70	50-1714.....44, 49	50-506.....50	51-037.....78	56-010.....69	57-014.....56
08-130.....70	38-155.....70	50-1731.....44	50-507.....59	51-038.....78	56-020.....68	57-091.....56
08-135.....70	38-160.....70	50-190.....73	50-510.....50	51-039.....78	56-021.....68	57-092.....56
08-140.....70	38-165.....70	50-200.....40, 47, 49, 52	50-512.....50	51-040.....78	56-022.....68	57-093.....56
08-145.....70	38-170.....70	50-2001.....62	50-513.....62	51-041.....78	56-040.....68	57-094.....56
08-150.....70	38-175.....70	50-2002.....62	50-514.....62	51-043.....78	56-041.....68	57-101.....56
08-155.....70	38-180.....70	50-2006.....55	50-520.....51	51-044.....78	56-042.....68	57-102.....56
08-160.....70	38-185.....70	50-2007.....54	50-522.....51	51-046.....78	56-060.....68	57-103.....56
08-165.....70	38-190.....70	50-2008.....54	50-524.....41	51-048.....78	56-061.....68	57-104.....56
08-170.....70	38-195.....70	50-201.....40, 49, 52	50-526.....41	51-051.....78	56-062.....68	57-105.....5, 63
08-175.....70	38-200.....70	50-2021.....49, 52	50-601.....50	51-052.....78	56-070.....68	57-106.....5, 63
08-180.....70	38-210.....70	50-2030.....52	50-602.....50	51-053.....78	56-085.....68	57-1521.....56
08-185.....70	38-220.....70	50-2031.....49, 52	50-604.....50	51-054.....78	56-100.....74, 82	57-1523.....56
08-190.....70	38-230.....70	50-2032.....49, 53	50-609.....50	51-070.....78	56-102.....75	57-1541.....56
08-195.....70	38-240.....70	50-2033.....52	50-610.....50	51-201.....78	56-104.....75	57-1543.....56
08-200.....70	38-250.....70	50-2034.....49, 53	50-700.....48	51-210.....78	56-105.....75	57-1809.....56
31-060.....70	38-260.....70	50-2035.....5, 53	50-711.....44, 49	51-215.....78	56-108.....83	57-1810.....56
31-065.....70	38-270.....70	50-2037.....52	50-7164.....45, 49	51-230.....78	56-110.....75, 83	57-200.....57
31-070.....70	38-280.....70	50-205.....53	50-718.....45	51-235.....78	56-111.....75, 83	57-201.....56
31-075.....70	40-100.....79	50-206.....55	50-719.....45	51-236.....78	56-115.....74	57-2011.....56
31-080.....70	40-121.....79	50-207.....54	50-720.....44, 49	51-237.....78	56-116.....74	57-203.....56
31-085.....70	40-123.....79	50-230.....65	50-7222.....55	52-163.....46	56-119.....74	57-2031.....56
31-090.....70	40-125.....79	50-231.....64	50-731.....44, 49	52-164.....47	56-120.....76	57-236.....56
31-095.....70	40-127.....79	50-232.....64	50-740.....44, 49	52-165.....46	56-121.....76	57-2361.....56
31-100.....70	40-150.....79	50-234.....66	50-7411.....44, 49	52-166.....46	56-122.....76	57-240.....56
31-105.....70	40-181.....79	50-235.....66	50-7414.....44	52-500.....47	56-123.....76	57-2401.....56
31-110.....70	40-183.....79	50-236.....67	50-7431.....44, 49	52-510.....47	56-124.....76	57-250.....56
31-115.....70	40-185.....79	50-300.....58	50-750.....44, 49	52-512.....47	56-155.....75	57-2501.....56
31-120.....70	40-187.....79	50-301.....58	50-7531.....44, 49	52-601.....47	56-161.....76	57-321.....56
31-125.....70	40-241.....79	50-302.....58	50-7611.....45, 49	52-602.....47	56-162.....76	57-323.....56
31-130.....70	40-243.....79	50-303.....58	50-7614.....45, 49	52-604.....47	56-163.....76	57-341.....56
31-135.....70	40-245.....79	50-304.....58	50-7631.....45, 49	52-609.....47	56-167.....76	57-343.....56
31-140.....70	40-247.....79	50-310.....58	50-7711.....44, 49	52-615.....47	56-168.....76	57-450.....57
31-145.....70	40-300.....79	50-311.....58	50-7713.....44, 49	52-716.....47	56-169.....76	57-470.....57
31-150.....70	40-350.....79	50-312.....58	50-7714.....44, 49	52-717.....47	56-170.....76	57-471.....57
31-155.....70	40-361.....79	50-320.....58	50-7731.....44, 49	52-863.....46	56-220.....69	57-472.....57
31-160.....70	40-363.....79	50-321.....58	50-790.....45, 49	52-864.....47	56-221.....69	57-473.....57
31-165.....70	40-365.....79	50-322.....58	50-7911.....45, 49	52-865.....46	56-222.....69	57-474.....57
31-170.....70	40-367.....79	50-330.....58	50-7931.....45, 49	52-866.....46	56-240.....69	57-475.....57
31-175.....70	40-421.....79	50-331.....58	50-802.....39, 49	55-001.....61	56-241.....69	57-476.....57
31-180.....70	40-423.....79	50-332.....58	50-803.....39, 49	55-002.....61	56-242.....69	57-477.....57
31-185.....70	40-425.....79	50-340.....58	50-820.....39, 49	55-003.....62	56-260.....69	57-478.....57
31-190.....70	40-427.....79	50-341.....58	50-822.....41, 49	55-004.....62	56-261.....69	57-479.....57
31-195.....70	40-481.....79	50-342.....58	50-823.....41, 49	55-005.....61	56-262.....69	57-481.....57
31-200.....70	40-483.....79	50-360.....58	50-825.....41, 49	55-006.....61	56-270.....69	57-490.....57
31-205.....70	40-485.....79	50-361.....58	50-830.....65	55-008.....61	56-285.....69	57-520.....56
31-210.....70	40-487.....79	50-362.....58	50-831.....65	55-009.....61	56-830.....76	57-525.....56
31-220.....70	40-601.....79	50-380.....58	50-832.....64	55-010.....61	56-831.....76	57-530.....56
31-225.....70	40-603.....79	50-393.....59, 83	50-834.....67	55-011.....61	56-833.....76	57-535.....56
31-230.....70	40-605.....79	50-395.....59, 82	50-835.....66	55-012.....61	56-834.....76	57-540.....56
31-235.....70	40-607.....79	50-399.....58, 82	50-836.....67	55-013.....61	56-835.....76	57-550.....56
31-240.....70	50-003.....42	50-400.....51	50-852.....39, 49	55-021.....61	56-836.....76	57-560.....56
31-245.....70	50-004.....45	50-401.....51	50-853.....39, 49	55-022.....61	56-837.....76	57-601.....62
31-250.....70	50-020.....38, 49	50-402.....51	50-863.....43, 49	55-023.....61	56-838.....76	57-602.....62
31-255.....70	50-022.....40, 49	50-410.....51	50-864.....43, 49	55-030.....5, 61	56-839.....76	57-604.....60
31-260.....70	50-023.....40, 49	50-415.....51	50-865.....43, 49	55-031.....5, 61	56-842.....76	57-605.....63
38-080.....70	50-025.....40, 49	50-417.....51	50-866.....43, 49	55-120.....61	56-843.....76	57-607.....60
38-085.....70	50-031.....45, 49	50-420.....51	50-868.....48, 49	55-121.....61	56-844.....76	57-610.....60
38-090.....70	50-033.....45, 49	50-422.....51	50-869.....48, 49	55-55.....61	56-845.....76	57-620.....60
38-095.....70	50-034.....54	50-424.....51	50-905.....50	56-001.....69	56-9001.....69	57-660.....60
38-100.....70	50-052.....38, 49	50-430.....62	50-910.....50	56-002.....69	56-9002.....69	57-700.....62

57-701.....60	611-6001.....26	61-7017.....16	62-120.....70	64-175.....82	67-2004.....35	69-4251.....2, 11
57-702.....60	611-6002.....19, 26	61-702.....30	62-125.....70	64-176.....82	67-2005.....35	69-4256.....2, 11
57-703.....60	611-6003.....21	61-7021.....16	62-130.....70	64-180.....82	67-2031.....3, 14	69-4257.....2, 11
57-704.....62	611-6004.....34	61-7024.....33	62-135.....70	64-400.....74	67-270.....28	69-5036.....7
57-705.....62	611-6005.....34	61-7026.....16	62-140.....70	64-401.....74	67-3011.....12	69-5037.....7
57-706.....62	611-6006.....21	61-7031.....17	62-145.....70	64-403.....74	67-3012.....12	71-322.....59
57-707.....62	611-6007.....21	61-704.....30	62-150.....70	64-510.....80	67-3016.....12	71-332.....59
57-708.....60	611-6008.....32	61-7041.....17	62-155.....70	64-511.....80	67-3017.....12	71-342.....59
57-709.....60	611-6009.....21	61-7042.....17	62-160.....70	64-703.....74	67-3041.....3, 14	71-362.....59
57-710.....63	611-7000.....17	61-7051.....17	62-165.....70	64-704.....74	67-3042.....3, 14	75-070.....70
57-711.....63	611-7003.....17	61-706.....30	62-170.....70	64-706.....74	67-3046.....3, 14	75-075.....70
57-718.....60	611-7006.....17	61-709.....30	62-175.....70	64-708.....83	67-3047.....3, 15	75-080.....70
57-719.....60	611-7007.....17	61-710.....31	62-180.....70	64-709.....83	67-4021.....12	75-085.....70
57-723.....63	611-7008.....17	61-7101.....31	62-185.....70	64-730.....82	67-4026.....13	75-090.....70
57-801.....61	611-7009.....17	61-71012.....31	62-190.....70	65-096.....77	67-4027.....13	75-095.....70
57-805.....61	611-7010.....17, 26	61-71024.....31	62-195.....70	66-100.....70	67-4051.....3, 15	75-100.....70
57-806.....61	611-90.....80	61-71036.....31	62-200.....70	66-105.....70	67-4056.....3, 15	75-105.....70
57-807.....61	611-900.....29	61-71048.....31	62-205.....70	66-106.....70	67-4057.....3, 15	75-110.....70
57-810.....63	611-901.....29	61-71060.....31	62-210.....70	66-400.....71	67-5036.....13	75-115.....70
57-820.....63	611-902.....29	61-711.....32	62-220.....70	66-499.....71	67-5037.....13	75-120.....70
57-830.....63	611-903.....29	61-712.....32	62-225.....70	66-500.....71	68-001.....72	75-125.....70
57-942.....57	611-904.....29	61-713.....32	62-230.....70	66-501.....71	68-0011.....72	75-130.....70
57-943.....57	611-905.....29	61-714.....32	62-235.....70	66-502.....71	68-0012.....72	75-135.....70
57-944.....57	611-90100.....31	61-716.....32	62-240.....70	66-503.....71	68-002.....72	75-140.....70
57-945.....57	611-9015.....31	61-717.....37	62-245.....70	66-504.....71	68-0021.....72	75-145.....70
58-211.....84	61-300.....30	61-718.....37	62-250.....70	66-506.....71	68-0022.....72	75-150.....70
58-212.....84	61-6001.....20	61-719.....32	62-270.....70	66-508.....71	68-003.....72	75-155.....70
58-221.....84	61-6004.....34	61-720.....29	62-280.....70	66-509.....71	68-0031.....72	75-160.....70
58-222.....84	61-6005.....34	61-721.....29	62-310.....70	66-512.....71	68-0032.....72	75-165.....70
58-223.....84	61-6005-1.....34	61-722.....31	62-390.....70	66-520.....71	68-004.....72	75-170.....70
58-224.....84	61-6006.....34	61-724.....31	62-400.....70	66-530.....71	68-0041.....72	75-175.....70
58-225.....84	61-6011.....20	61-725.....31	62-457.....70	66-551.....71	68-0042.....72	75-180.....70
58-231.....84	61-6012.....20	61-727.....37	62-465.....70	66-552.....71	68-005.....72	75-185.....70
58-232.....84	61-6021.....20	61-730.....17, 20, 29	62-477.....70	66-554.....71	68-006.....72	75-190.....70
58-233.....84	61-6024.....33	61-733.....29	62-480.....70	66-556.....71	68-010.....73	75-195.....70
58-234.....84	61-6031.....22	61-735.....17, 20, 29	62-487.....70	66-6275.....70	68-0109.....73	75-200.....70
58-235.....84	61-60313.....24	61-740.....17, 20, 29	62-490.....70	66-700.....80	68-012.....73	75-205.....70
58-237.....84	61-6041.....22	61-748.....29	62-500.....70	66-754.....85	68-0129.....73	75-210.....70
58-238.....84	61-60413.....24	61-750.....17, 20, 29	62-510.....70	66-757.....85	68-015.....73	75-220.....70
58-239.....84	61-6042.....22	61-755.....31	62-600.....70	66-850.....50, 85	68-0159.....73	75-225.....70
58-240.....84	61-60423.....24	61-756.....30	63-001.....27	66-852.....50, 85	69-000.....7	75-230.....70
58-244.....73	61-6051.....22	61-757.....30	63-002.....27	66-854.....50, 85	69-001.....4, 26	75-235.....70
58-245.....73	61-60513.....24	61-7724.....33	63-120.....6	66-856.....50, 85	69-003.....7, 37	75-240.....70
60-000.....81	61-6701.....21	61-7731.....18	63-121.....6	66-858.....50, 85	69-006.....7, 37	75-250.....70
60-003.....81	61-6711.....21	61-77313.....19	63-130.....6	66-860.....50, 85	69-007.....7	75-260.....70
60-005.....81	61-6712.....21	61-7741.....18	63-132.....6	66-908.....85	69-008.....7	75-270.....70
60-008.....81	61-6717.....21	61-77413.....19	63-220.....13, 35	66-920.....85	69-009.....7	75-280.....70
60-009.....81	61-6721.....21	61-7742.....18	63-225.....7, 13, 35, 37	66-923.....85	69-2001.....6	75-290.....70
60-010.....81	61-6724.....33	61-77423.....19	63-230.....7, 13, 35, 37	66-925.....85	69-2004.....5, 37	75-300.....70
60-020.....81	61-6731.....23	61-7751.....18	63-240.....7, 13	66-927.....85	69-2005.....5, 37	75-310.....70
60-030.....81	61-67313.....25	61-77513.....19	63-300.....27	66-929.....85	69-2031.....8	75-320.....70
60-039.....81	61-6741.....23	61-790.....29	63-604.....35, 37	66-931.....85	69-2231.....2, 10	75-330.....70
60-040.....81	61-67413.....25	61-791.....55	63-605.....35, 37	66-936.....85	69-2241.....10	75-340.....70
60-045.....84	61-6742.....23	61-792.....55	64-010.....83	66-937.....85	69-3011.....6	75-350.....70
61-0604.....36	61-67423.....25	61-793.....55	64-015.....83	66-938.....85	69-3012.....6	75-360.....70
61-0605.....36	61-6751.....23	61-794.....55	64-020.....57, 83	66-9381.....85	69-3016.....6	75-370.....70
61-0606.....36	61-67513.....25	61-795.....55	64-076.....82	66-939.....43	69-3017.....6	75-380.....70
61-0704.....36	61-691.....30	61-903.....33	64-077.....82	66-940.....43	69-3041.....8	75-390.....70
61-0705.....36	61-692.....30	61-9790.....55	64-078.....82	66-945.....43	69-3042.....8	75-400.....70
61-101.....80	61-693.....30	61-9795.....55	64-086.....82	67-000.....13	69-3046.....8	75-410.....70
61-103.....80	61-694.....30	62-070.....70	64-087.....82	67-001.....4, 13, 26	69-3047.....9	75-420.....70
61-105.....80	61-697.....32	62-075.....70	64-088.....82	67-003.....13, 35	69-3242.....2, 10	75-430.....70
611-096.....26	61-698.....30	62-080.....70	64-140.....85	67-006.....13, 35	69-3246.....2, 10	75-440.....70
611-099.....27	61-699.....30	62-085.....70	64-146.....77	67-007.....13	69-3247.....2, 11	75-600.....70
611-100.....27	61-7001.....16	62-090.....70	64-148.....77	67-008.....13	69-4021.....7	
611-106.....4, 28	61-7004.....34	62-095.....70	64-149.....77	67-009.....13	69-4026.....7	
611-4521.....36	61-7005.....34	62-100.....70	64-150.....85	67-015.....28	69-4027.....7	
611-4531.....36	61-701.....30	62-105.....70	64-157.....77	67-101.....4, 28	69-4051.....9	
611-6000.....21	61-7011.....16	62-110.....70	64-158.....77	67-107.....4, 28	69-4056.....9	
	61-7012.....16	62-115.....70	64-169.....77	67-2001.....12	69-4057.....9	

# Terms and Conditions

## Returns

To make sure that the item(s) get quickly processed, please follow these simple steps.

1. Call and request an RMA (Returned Merchandise Authorization) number for the merchandise you wish to return. All products must be returned in an unaltered / unchanged state from its original condition. Products must be no older than one year old, or two years old for scales. New parts returned for credit must be completely unaltered, and in new condition. Warranty parts will be inspected to see if failure was caused by misuse of the part, and possibly deemed not returnable.

2. Include your contact information, and the problem with the part in a note inside the box. Please write RMA number on the outside of the box.

3. Custom parts are not returnable for credit, but can sometimes be repaired.

## Printing Disclaimer...

QuickCar Racing Products reserves the right to update, change or modify any product or policy deemed necessary without notice. Every effort has been made to avoid printing errors, in this catalog and previous versions. We disclaim any responsibility for application or specifications.

## Disclaimer of Warranty

QuickCar Racing Products makes no warranties...

QuickCar Racing Products makes no written, oral, expressed, or implied statement of warranty or guarantee on any product sold, other than for defects in materials or workmanship as stated previously. QuickCar Racing Products will not assume liability for personal or property damage resulting from the use or misuse of any product we manufacture or sell, whether on the street or on the race track. Purchase and/or use of these products implies recognition and acceptance of this entire warranty and disclaimer by customer.

## Warranty

Parts are backed by a full one year warranty against factory defects in workmanship and materials. All warranty parts will be inspected upon arrival for misuse. Scales are backed by a two year warranty against factory defects in workmanship and materials. QuickCar Racing Products reserves the right to decline any warranty items if it appears that the item has failed due to misuse, or lack of care taken while the product was in use.

## ORDERING INFORMATION:

To Order By Phone: Monday Through Friday

8:00 To 5:00 Central Time

800-99-Speed (800-997-7333) Or 615-453-2120

By Fax 24 Hours A Day: 615-453-2130

By E-Mail: Sales@Quickcar.com

Web: [www.quickcar.com](http://www.quickcar.com)

To Locate A Dealer Near You Please Call 800-99-Speed

## SHIPPING OPTIONS:

- UPS Ground (1-6 working Days)
- UPS Blue (2 Working Days)
- UPS Red (1 Working Day)

**Please Note that products cannot be shipped by UPS to a P.O. Box. Freight charges are FOB Lebanon, TN.**



**⚠ WARNING! Cancer and Reproductive Harm. [www.p65warnings.ca.gov/](http://www.p65warnings.ca.gov/)**

Some products in this catalog contain materials listed under California Proposition 65.  
For additional details on specific products, visit the QuickCar website at [www.quickcar.com](http://www.quickcar.com)  
For additional information on Proposition 65, visit [www.p65warnings.ca.gov/](http://www.p65warnings.ca.gov/)





GRP100



170 BUSINESS PARK DRIVE. LEBANON TN 37090

1-800-99-SPEED

[WWW.QUICKCAR.COM](http://WWW.QUICKCAR.COM)