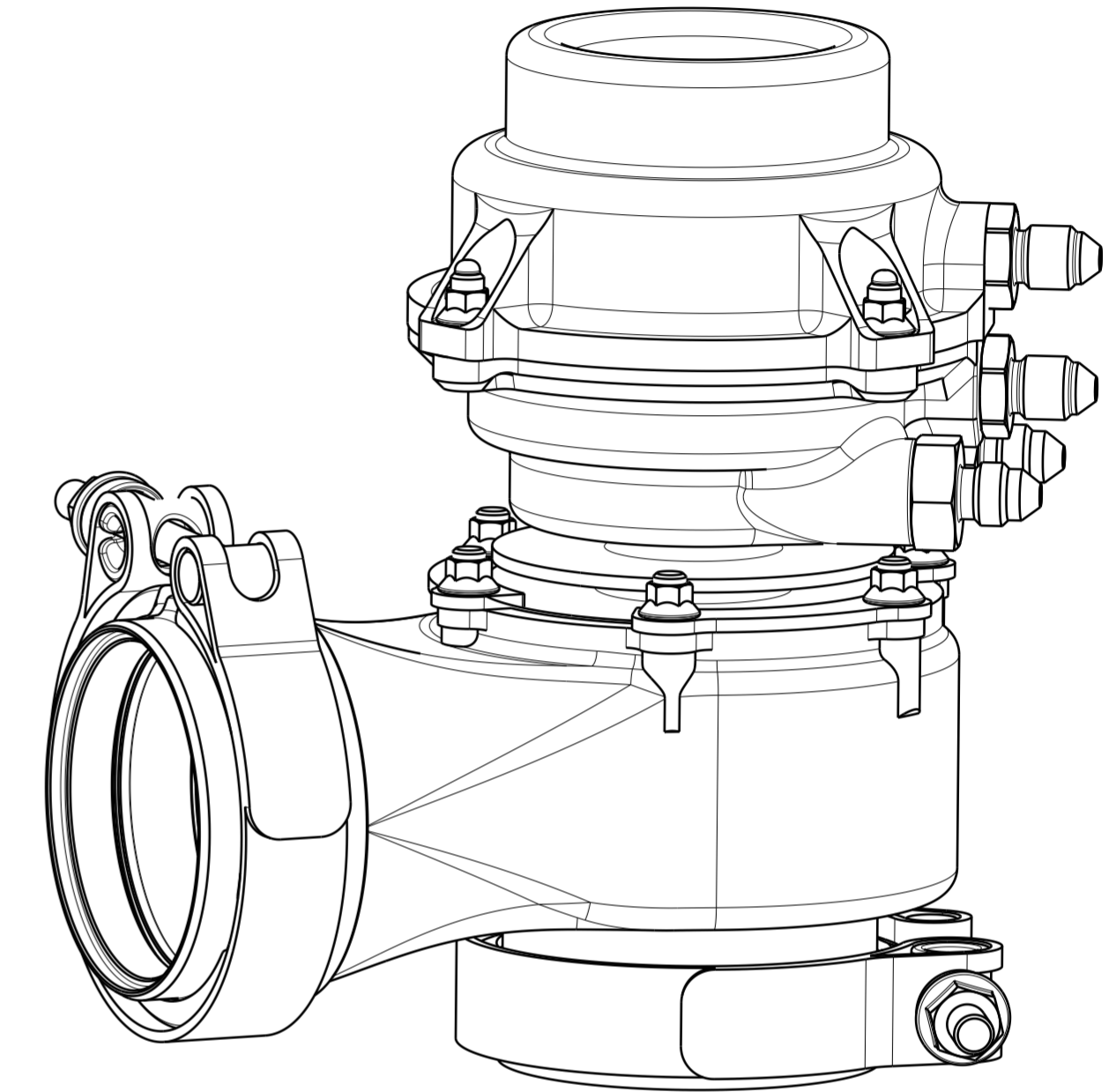
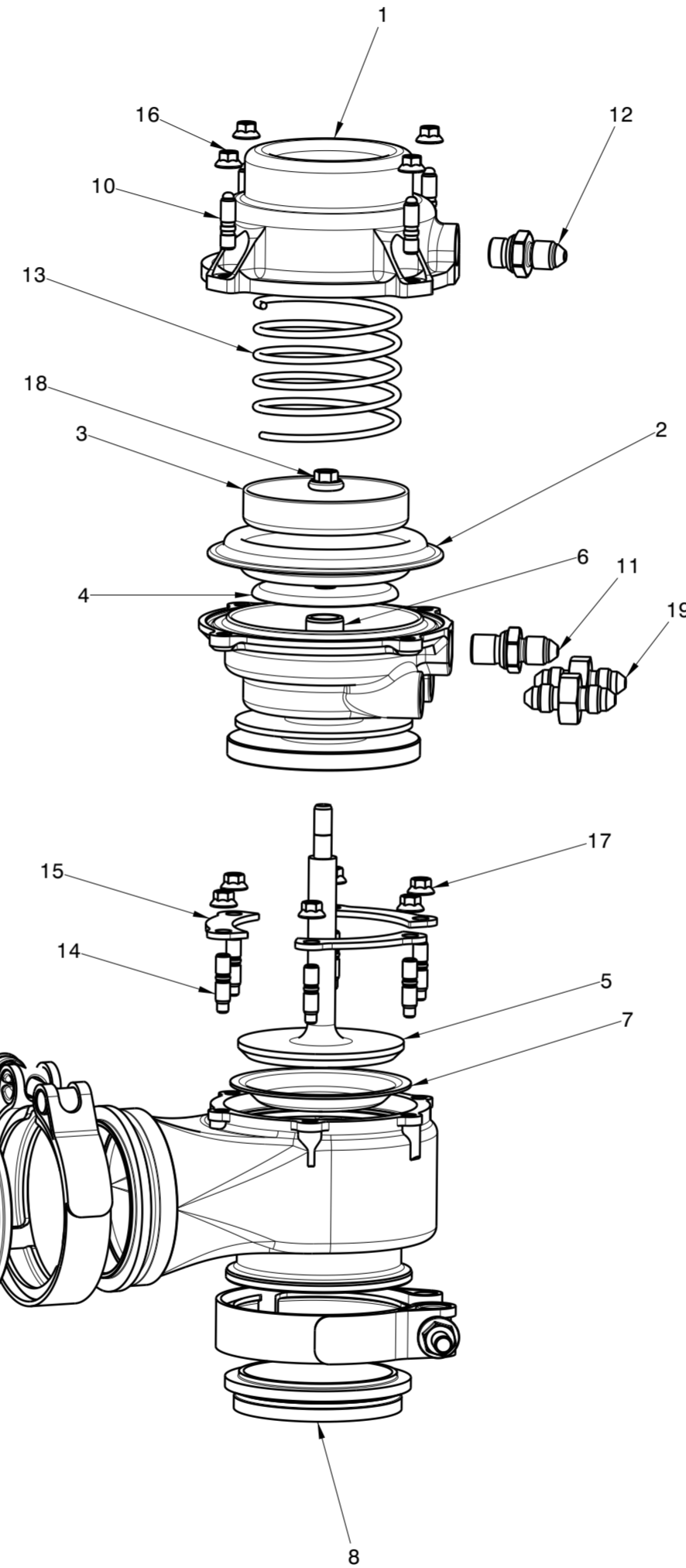
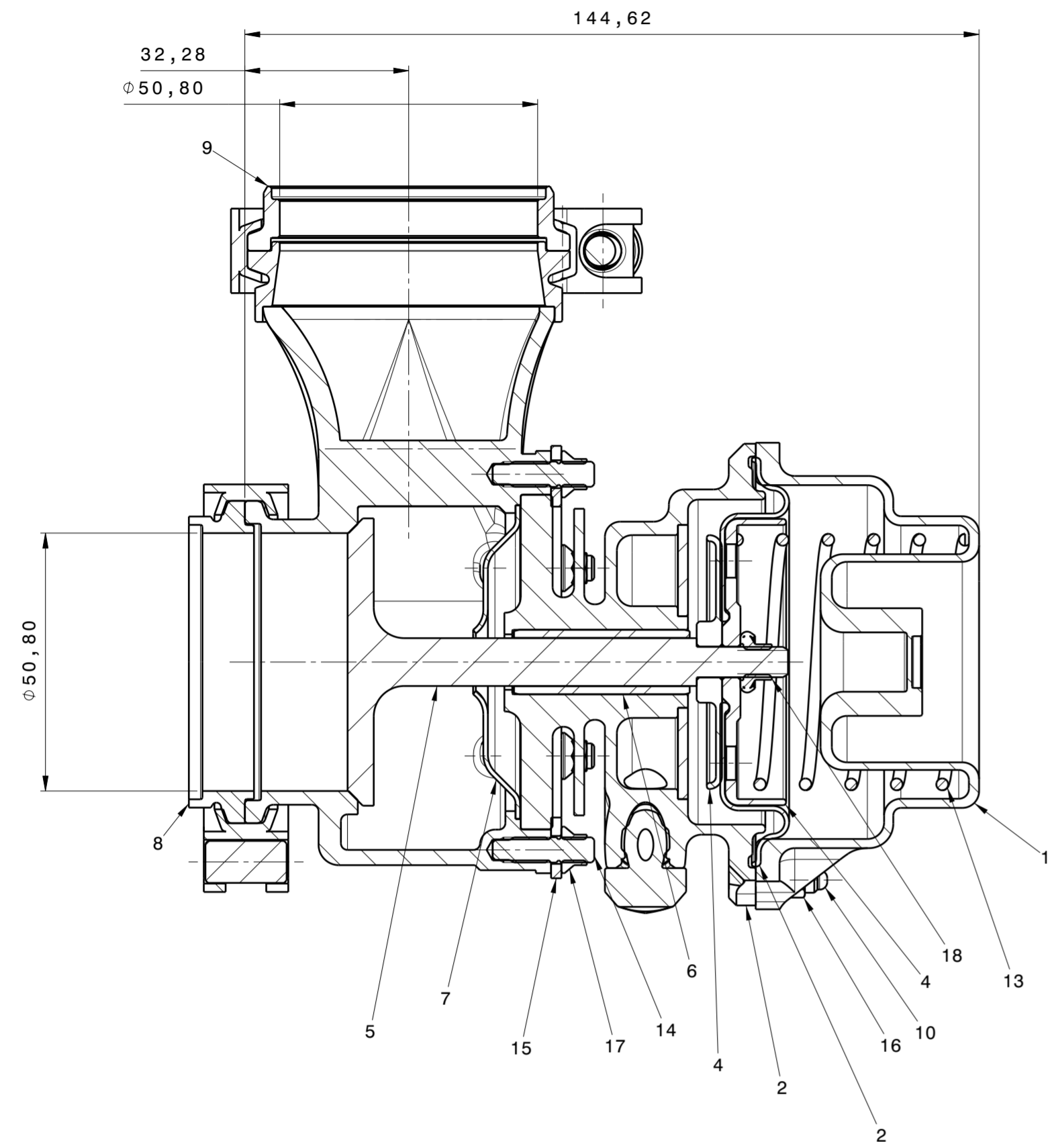


Quantity per assembly:- 1

PROCESS.		
No.	Description.	Done.
1	Manufacture.	
2	Inspect.	
3	Part mark as shown.	
4	Record weight.	



Bill of Material: 4059-020-111

Number	Part Number	Product Description	Quantity
1	194-017-111.	Cap - Centre Port - Spring Top - SGT Wastegate	1
2	125-017-111	Diaphragm - Membrane	1
3	240-017-111-01A	Piston - Diaphragm - Membrane - Stainless Steel	1
4	206-017-111	Clamp Plate - Stainless Steel - Diaphragm - Membrane	1
5	139-017-111	Wastegate Valve	1
6	140-017-111	Valve Guide	1
7	166-017-111	Heat Shield	1
8	199-017-111	Inlet Ring - DW 1 Wastegate	1
9	200-017-111	Outlet Ring - DW1 Wastegate	1
10	113-017-111	Stud - Body To Cap	4
11	131-017-111	Inlet Union -3 Ali Red	1
12	130-017-111	Inlet Union -3 Ali Blue	1
13	154-017-111	Spring - Green Red	1
14	112-017-111	Stud - Casting To Body	6
15	141-017-111	Retaining Plate	3
16	HM14-050	K-Nut - M5	4
17	HM41-050	K-Nut - M5 - Silver	6
18	HWM14-060	Washed K-Nut - M6	1
19	D3 MALE -D3 MALE	-03 JIC Male-Male (Stainless)	2
	DW 0675	Teconnex Clamp Assy	2
	4045-018-111	Wastegate Casting Assy - Coated	1
	4063-020-111	Valve Guide Housing Assy - WCW	1

01.0	Initial Issue	MS	PK	PC	11/11/20
Issue	Issue Change	Drw.	Chk.	Appr.	Date
Drawing Standard	BS 8888	Unit 7, Park Industrial Estate Frogmore St Albans Herts, AL2 2DR UK			
Material Spec.	N/A	DSPE Engineering Ltd			
Heat Treatment Spec.	N/A	This drawing and the copyright herein, are the property of DSPE Engineering Ltd. It is private, confidential and is issued on the express condition that it is not used for any other purpose, copied or communicated to any other party without the written consent of DSPE Engineering Ltd. Inspect to this data, then return the drawing and any electronic data with component to DSPE Engineering Ltd.			
Finish/Protection Spec.	N/A	General Tolerances Unless otherwise stated	Surface Texture EN ISO 1302 Unless otherwise stated	CAD Mass (gm) *** Lifed Y/N	
Description	WATERCOOLED SGT WASTEGATE	ISO 2768 -fH	Unspecified Edges ISO 13715	Thread Tolerances	Service Y/N
Part Number As Drawn	4059-020-111	Metric 6H(int) 6g(ext)	1-0,2 -0,3	Inch 2B(int) 2A(ext)	*
Part Number Sym. Opp.	-	Inch 2B(int) 2A(ext)	+0,3 +0,3	Sheet Size	A2
Drawn	MS	Class	*	Sheet	1 of 1
Email	perry@dps.technology	Class	*	Sheet	1 of 1
Phone Direct	+44 7973 289819	Class	*	Sheet	1 of 1