

Company  
Catalog

2021 Vol. 2



Engineered Adrenaline



PERFECTION™  
SIMPLIFIED





IN 1999  
ADVANCED FLOW ENGINEERING  
WAS BORN



WHAT  
STARTED AS A DREAM

...and a passion for automobiles led us on this exciting journey. In the beginning, we had a vision for what an air filter should be, and what you see today is the result of that vision. From the filter media to the urethane frames to the seal design, no stone was left unturned. Our attention to detail is evident in our filters, and in every product we design and produce. Now in our 22th year, that same approach is carried through all our product lines. Our cold air intake and exhaust systems and other product lines are second to none, all built in our 160,000+ sq. ft. facility in Corona, California, and we continue to grow. Exciting and recent acquisitions have expanded our portfolio into the suspension and tuning markets, allowing us to provide even more solutions and high-quality products for true automotive enthusiasts.

Our growth and continued success would not be possible without the right team of people. We share the same dream, vision, and passion for performance. This united front is what allows us to create such exciting and compelling products. From our design and engineering teams who create the products, to the manufacturing staff who build them, to all our support staff who manage the purchasing, sales, marketing, customer service, and accounting — everyone plays a key role in the success of aFe.

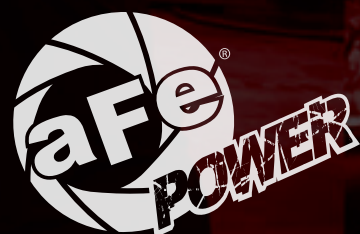
Thank you to our customers for your continued support of aFe and for celebrating with us in our 23rd year in the automotive after-market. This, our 23rd year catalog, shows how far we’ve come and includes our full product line for you to see. This is what we do.

SN<sup>2</sup>

Shahriar “Nick” Niakan  
President & CEO

TABLE OF  
CONTENTS

Who We Are .....	2	Billet Throttle Body .....	22
Research & Development .....	4	Carbon Cabin Air Filters .....	24
Proving Grounds .....	6	2022 New Building .....	26
Performance Air Filters .....	8	American Muscle .....	28
Cold Air Intakes .....	10	Gas Trucks .....	30
Exhaust Products .....	12	Jeep - We Do It .....	32
Suspension & Control .....	14	Takeda Power .....	34
Engineered Products .....	16	It's All About Torque .....	36
Electronic Modules .....	18	Eurotrip .....	38
Diesel Fuel Tank .....	20	Go to the Source .....	40



WE ARE FUELED BY  
HUMAN INGENUITY

REVISIONS				
ZONE	REV.	DESCRIPTION	DATE	APPROVED
	1	FOR QUOTATION ONLY	05/1/18	

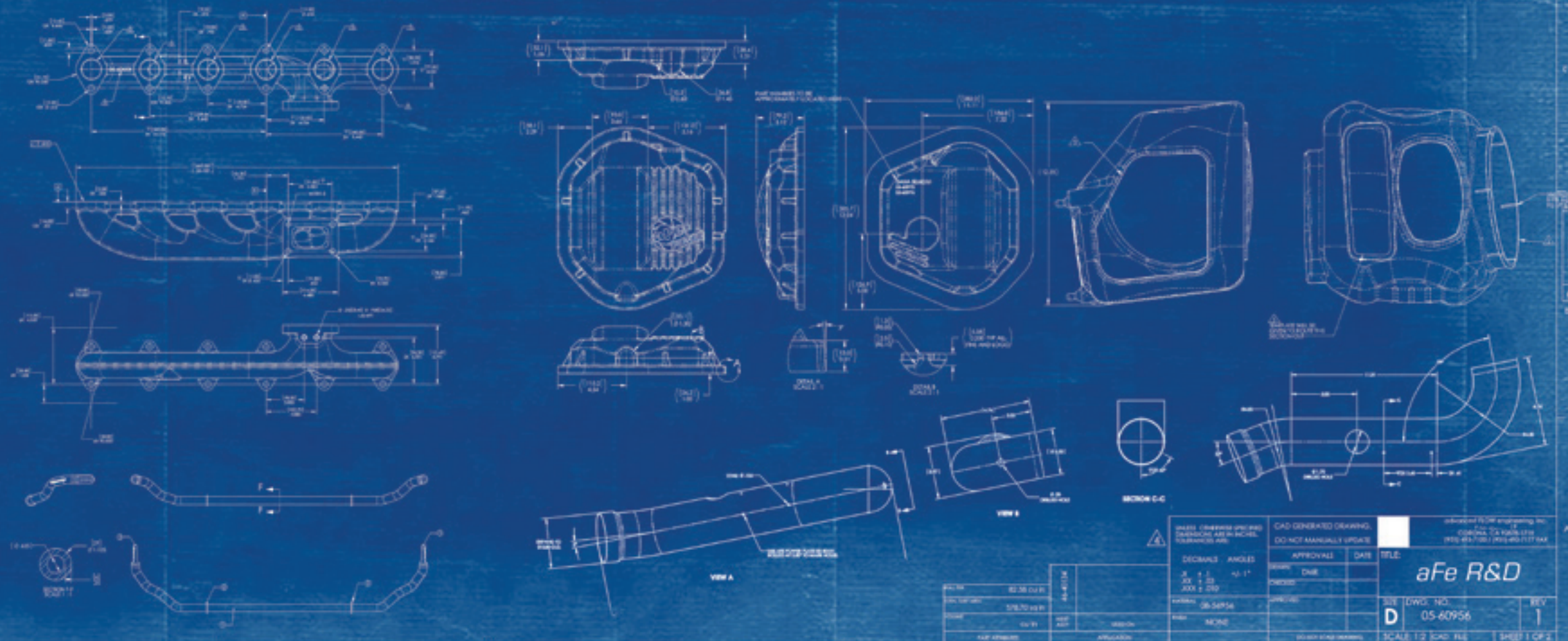


# A FOUNDATION OF RESEARCH & DEVELOPMENT

We are in the business of creating the most exciting, highly engineered products in the world.

Our products excel in every way — the installation, the fit, and the performance are benchmarks in the automotive after-market industry.

When you bolt on an aFe POWER product, you get more than just performance — you get perfection. With full-time teams of engineers dedicated to specific product groups, our products are designed to fit a specific vehicle year, make, and model range. Our extensive research and development programs put products to the test on our in-house dyno as well as on the street, the track, and off-road, to ensure performance improvements over stock.





**PROVING GROUNDS**  
IT DOESN'T LEAVE HERE UNTIL  
IT'S PROVEN TO MAKE POWER.

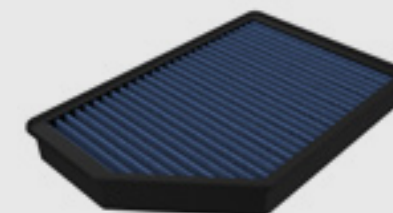


VEHICLE  
**20+**  
PLATFORMS

OVER  
**6.5k**  
PART NUMBERS

**First to Market Is the Target**

aFe POWER has made over 6,500 unique products,  
each one designed to enhance performance and style.



**Strength Through Concept**

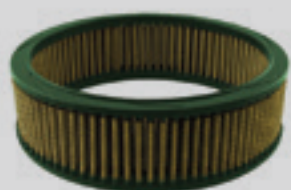
If it's a vehicle in production, you can bet we're working on making it better, faster, more powerful, agile, maneuverable, louder, and meaner. aFe POWER offers multiple options designed to fit your tastes so your personality shines through every time you start the engine.



# FLOW IS OUR MIDDLE NAME PERFORMANCE AIR FILTERS



1999  
FIRST FILTER



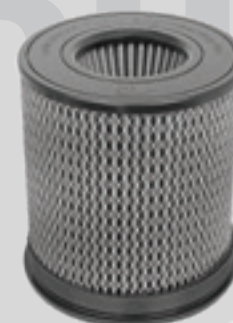
VEHICLE  
20+  
PLATFORMS

## Versatility at The Heart of Airflow

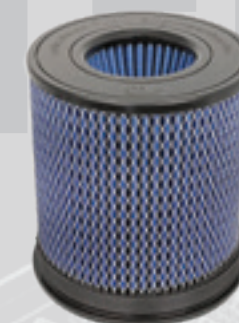
Our filters are the heart and soul of our industry-leading cold air intake systems, and in 1999, we set out to provide the ultimate air filter for OE replacement, racing, off-road, and universal applications. Not only did we focus on creating the best filter on the market, but we also made it work for any application. From the track to the trail to the work horse and back again, aFe meets the high demands we place on our vehicles.

OF STYLES &  
100'S  
APPLICATIONS

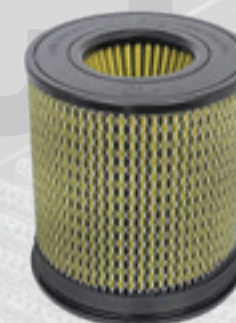
### RECOMMENDED USAGE



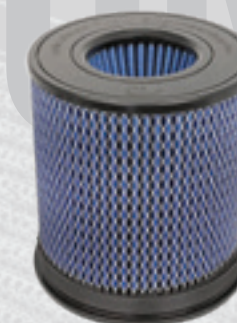
**Pro Dry S**  
Daily Driver  
Convenience



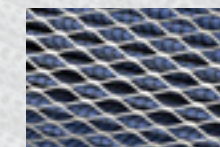
**Pro 5R**  
Street /Track  
Performance



**Pro GUARD 7**  
Off-Road  
Severe Duty



**Pro 10R**  
Diesel  
Industrial Duty



### TECHNICAL DATA

99.2% Efficiency  
3-Layer  
Synthetic  
No Oil Required

99.6% Efficiency  
5-Layer  
Cotton Gauze  
Oiled

99.7% Efficiency  
7-Layer  
Synthetic & Cotton  
Oiled

99.6% Efficiency  
10-Layer  
Cotton Gauze  
Oiled



# FLOW POWER AND STYLE COLD AIR INTAKES

## Industry-Leading Designs That are Second to None

With innovative design processes and dyno-proven performance improvements on all of our systems, we're known for our cold air intakes — and for good reason: we make POWER!



FIRST  
**2001**  
INTAKE



**Humble Beginnings**  
The basic adapter, filter, and bracket that started it all.



FIRST TAKEDA  
**2009**  
SPORT COMPACT

**Takeda**  
**Sport Compact**  
gets its own style and the recognition it deserves.

**MOMENTUM**

**The New Standard**  
in the industry; features a roto-molded structure, patented housing-to-filter interface, and clear sight window.



FIRST  
**2011**  
MOMENTUM



FIRST QUANTUM  
**2018**  
INDUSTRIAL

**QUANTUM**  
AIR FLOW TECHNOLOGY  
**The Workhorse**  
specially engineered for heavy-duty applications with an economical bottom line.



RAPID  
**2020**  
INDUCTION

**RAPID INDUCTION**  
**Factory Integrated**  
Rapid Induction intakes that make the most of your existing equipment.



FIRST  
**2018**  
TRACK SERIES

**TRACK SERIES**  
**Carbon Fiber Tubes,**  
open element, aggressive sound, and high-powered.

FIRST  
**2016**  
BLACK SERIES

**aFePower**  
BLACK SERIES AIR INTAKE SYSTEM  
**High-End Carbon Fiber**  
appearance and top performance engineered specially for show-car quality and power.

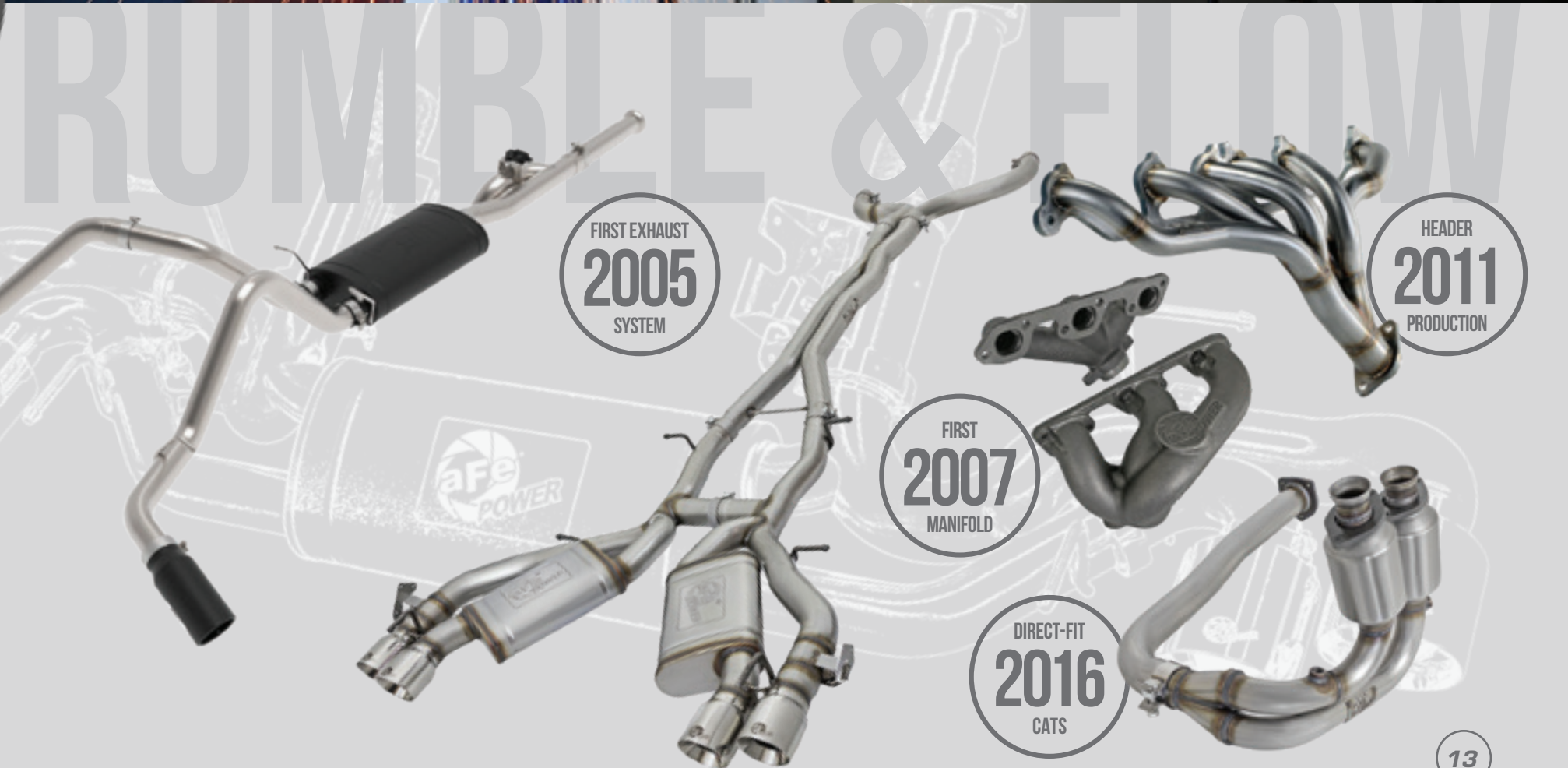


HANDCRAFTED IN THE U.S.A.  
**EXHAUST PRODUCTS**



**It's a Personal Statement**

With performance, sound, and style that demand a presence, our exhaust systems are a direct reflection of our commitment to delivering quality products.



FIRST EXHAUST  
**2005**  
SYSTEM

FIRST  
**2007**  
MANIFOLD

DIRECT-FIT  
**2016**  
CATS

HEADER  
**2011**  
PRODUCTION

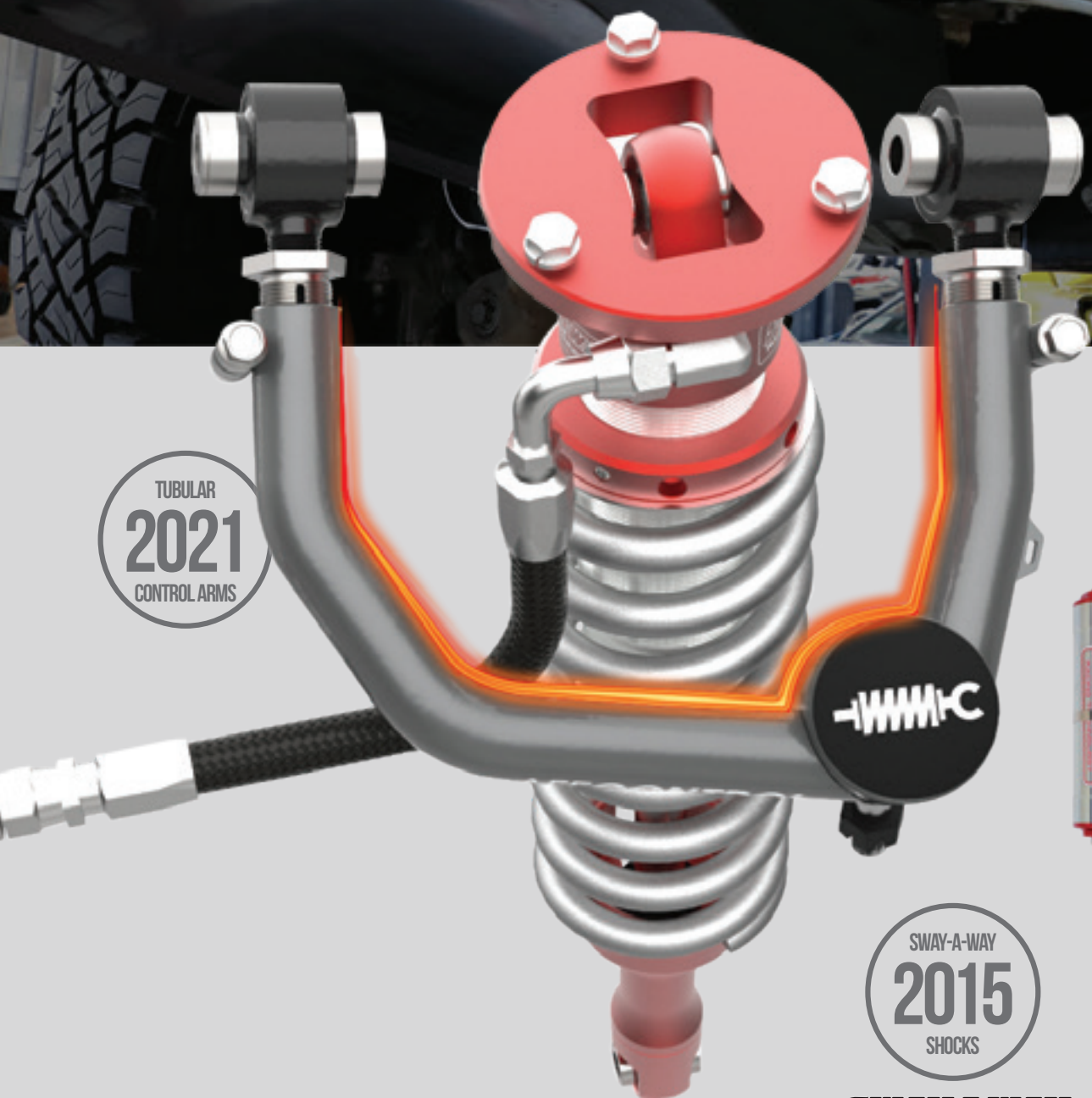


# COMMAND THE DIRT AND ROAD SUSPENSION & CONTROL



## Power Without Control is Useless

It's about how it performs and feels behind the wheel.  
Our suspension products deliver excitement on-road,  
off-road, and on the track.

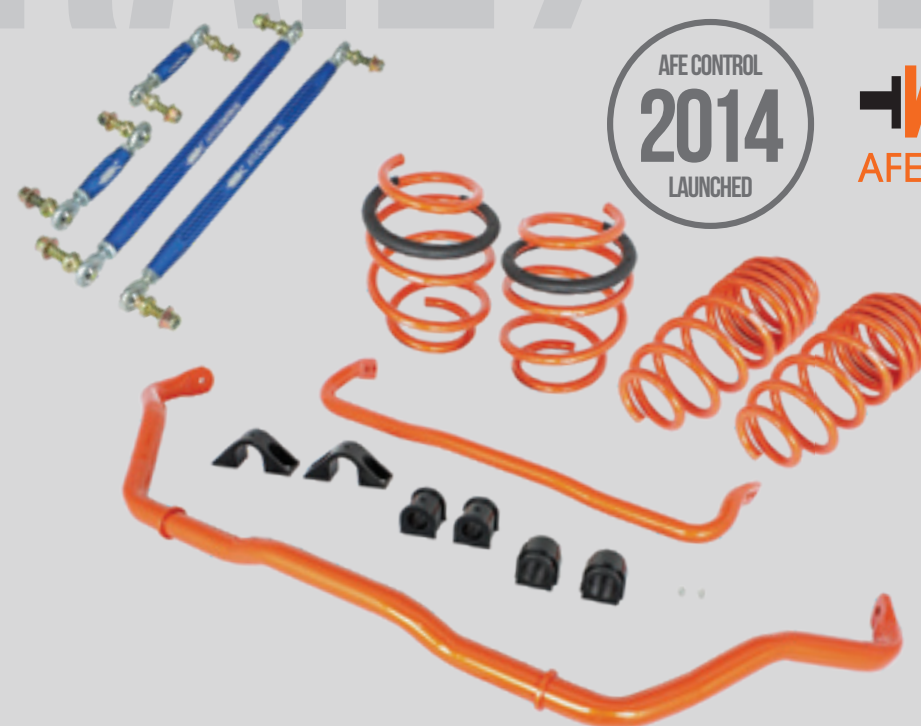


TUBULAR  
**2021**  
CONTROL ARMS



SWAY-A-WAY  
**2015**  
SHOCKS

**SWAY-A-WAY**



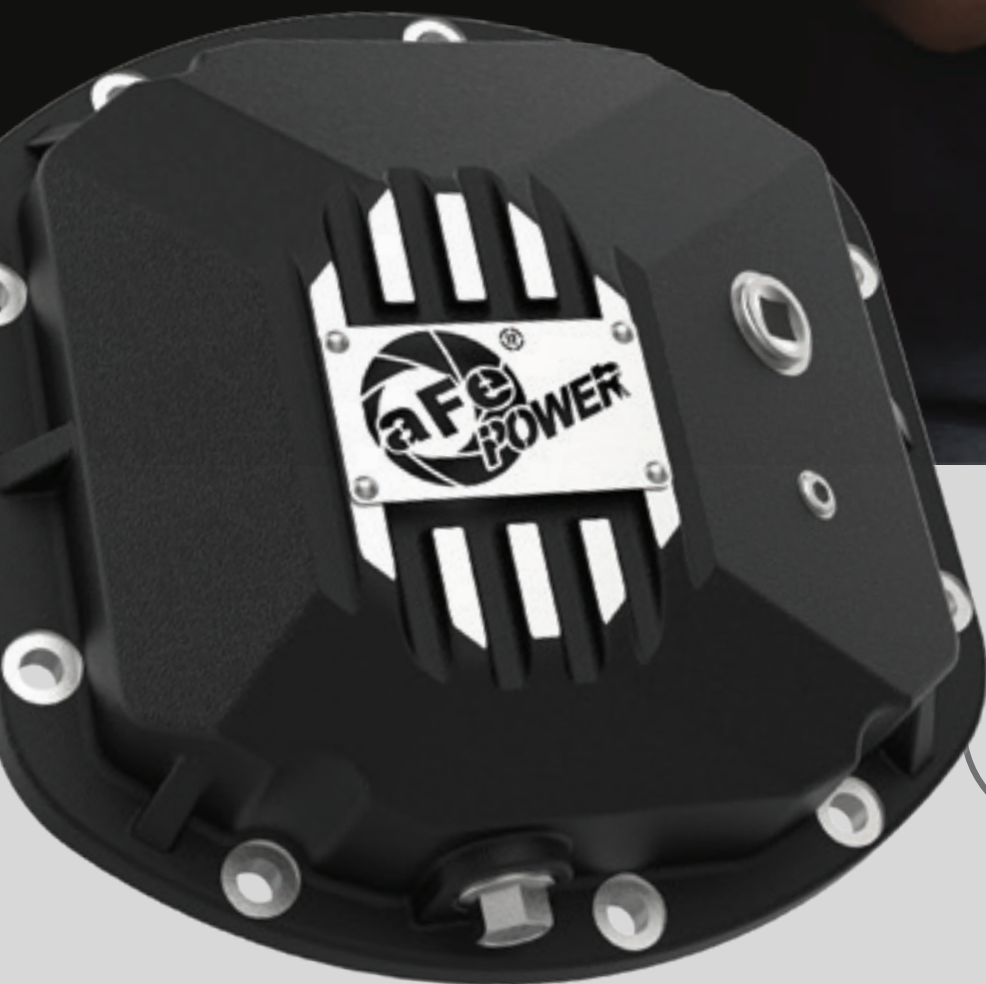
AFC CONTROL  
**2014**  
LAUNCHED

**WMC**  
AFECONTROL®





METICULOUSLY MADE  
ENGINEERED PRODUCTS



FIRST  
2010  
DIFFERENTIAL  
COVER

FIRST  
2009  
INTERCOOLER



DFS FUEL SYSTEM  
2015  
LAUNCHED

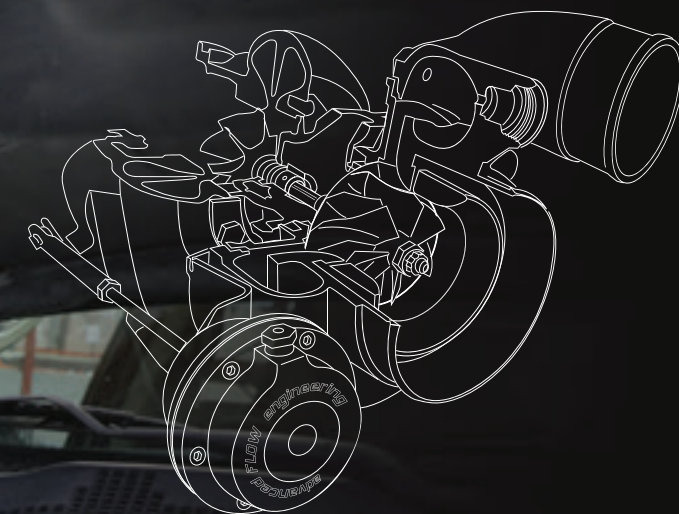
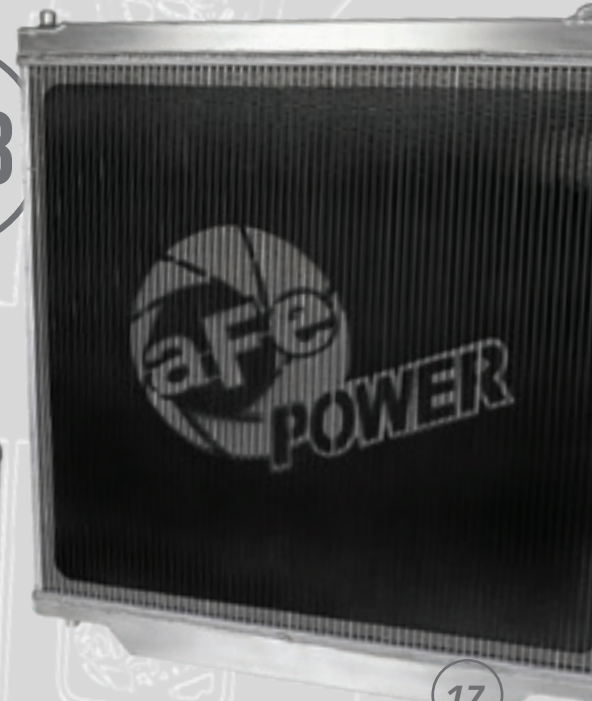


WINNER SEMA 2016  
Best New Street Performance Product

TURBOCHARGERS  
2011  
INTRODUCED



RADIATORS  
2018  
INTRODUCED



#### Power & Protection

From turbochargers and cooling systems to protection products, our engineers are experts in our trade. Our attention to detail far surpasses the industry standard.



# DIGITAL POWER ELECTRONIC MODULES



**AGD®**  
Advanced Gauge Display Monitor



**Sprint Booster®**  
Increases Accelerator Response



**Shift Logic®**  
Reduces Transmission Slippage



**Scorcher® PRO**  
OBD II Programmer



**Brake Logic®**  
Increases Engine Braking



**Scorcher® BLUE**  
Bluetooth® Power Module. Use the App!



**Scorcher® GT/HD**  
Plug & Play Power Module

## Real POWER at Your Fingertips

Up your power and haul heavy loads with custom tunes, plug-and-play power modules, and digital gauge displays. Use our in-depth displays and data loggers to monitor your vehicle's health and keep it operating at optimal performance levels.



INTRODUCING THE 08-10 FORD 6.4L POWERSTROKE

# LARGE CAPACITY FUEL TANK

Eliminate range anxiety by replacing your undersized, factory tank with an aFe POWER 52-gallon tank. Designed to be a direct replacement and roto-molded out of diesel-rated LMDPE for conformability and stiffness. All necessary is included for a hassle-free installation.

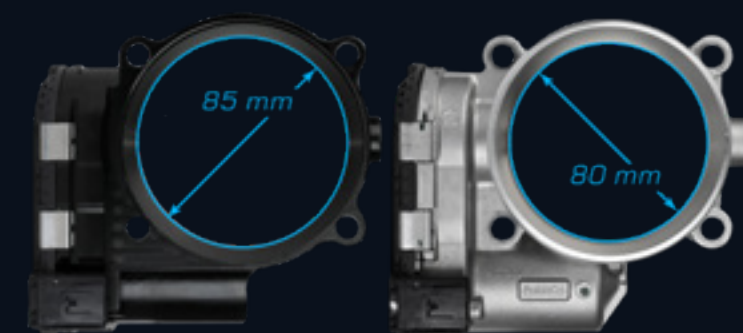




**DYNO PROVEN POWER**



THROTTLE  
**2021**  
BODY RELEASE



**We wouldn't do it if it didn't make POWER.**

Test results on aFe's Dynojet dyno showed power gains across the power band, topping out at +17 HP and +15 lb-ft torque at 6,000 rpm. Testing was conducted on a 2020 Mustang 5.0 comparing stock and the aFe Power BTB (all tests conducted using 91-octane fuel). No other modifications to the vehicle were made, so imagine the potential when you add in other performance enhancing products such as a cold air intake, tuner and cat-back exhaust! By the way, for you truck enthusiasts, this product also fits the F-Series (see application table for exact vehicle fitment).

**The Heart of the Body.**

To address any performance concerns such as rough idling or check engine lights (CEL's), aFe chose to use OEM electronics and gearing mechanism to ensure proper function and connectivity. Again, the 85mm throttle body does not require any custom tuning: it works well right out of the box.

**How did we do it?**

Not only did we increase the bore diameter from the stock 80 mm to 85 mm, we redesigned the throttle body from the ground up, aerodynamically improving the air flow path.



Mold



Pollution



Pollen



advanced FLOW engineering 35-10020C III121DB3 Made in USA



# CLEAR THE AIR CARBON CABIN AIR FILTERS



**aFe POWER Carbon Cabin Air Filters** reduce impurities such as dust, soot, and pollen from entering your car's ventilation system. Activated carbon granules remove odors and fumes so you and your passengers breathe cleaner, fresher air.



23 YEARS ON  
**THIRD EXPANSION**



# 1375 SAMPSON AVENUE

## **aFe POWER's 23rd anniversary is highlighted**

by recently acquiring a new 127,000 square foot building, only a short distance away from our Corona, CA facility. Our taste for pushing the limits kept us going- it's what innovation is all about.

Throughout the years, we've overcome obstacles, from the risks of starting a new business to the 2008 recession. Despite the pandemic and recent years that challenged us all, we persevered with optimism, teamwork, and strategy. Even with all these challenges, we have continued to grow, exceeding the capacity of our existing buildings. Acquiring this greater building enables our operations to match our growth, with the cumulation of our facilities now covering over 300,000 square feet.



# HORSEPOWER THAT RUMBLES AMERICAN MUSCLE



## American muscle is American pride.

With our performance electronics, induction, exhaust, and tuned suspension products, we offer more power and control for your late-model muscle car, all proudly developed and tested in the U.S.A.





## FORM MEETS FUNCTION GAS TRUCKS



### It's not just a pickup.

For work or play, your truck is your life. Whether it's a weekend trip off-roading, hauling, towing on the job, or driving your daily commute, we offer all the performance upgrades for your truck lifestyle.





GO ANYWHERE  
**JEEP-WE DO IT**



**Off-roading is more than just a hobby** — it's a way of life. That's why we develop parts for everything from daily drivers to those made for the most extreme off-road adventures.



## SPORT COMPACT TAKEDA POWER



**It started as an aggressive debut** into the Honda market, but this product has expanded to other sport compact makes. We are dedicated to progressing the legendary performance heritage of the import world.





# DIESEL POWER IT'S ALL ABOUT TORQUE

**Just like you,** we're not just looking for impressive numbers; rather, it's a quest for drivability and peak torque when you need it most. We create top-of-the-line, dyno-proven products to up your diesel's already-impressive performance output.





## POWER REFINED EUROTRIP



**“Power Refined”**  
is a philosophy that drives us to deliver quality engineering blended with innovative power  
and suspension products for the like-minded enthusiast who’s pursuing  
limitless freedom, technology, and style.





GET THE BEST  
GO TO THE SOURCE



Diesel Trucks	Gas Trucks	Jeep	Cars	Powersports	Products	Gear
<b> Dodge / Ram</b> <b> GM</b> <b> Ford</b> <b> Nissan</b> <b> Printable Diesel Application Guide</b>	<b> SILVERADO 1500, SILVERADO HD</b> 2007-2010 Duramax 6.6L, 2.8L 13-16 Duramax 6.6L, 2.8L 07-10 Duramax 6.6L, 2.8L 08-10 Duramax 6.6L, 2.8L 08-10 Duramax 6.6L, 2.8L	<b> SILVERADO 2500, SILVERADO HD</b> 2007-2010 Duramax 6.6L, 2.8L 13-16 Duramax 6.6L, 2.8L 07-10 Duramax 6.6L, 2.8L 08-10 Duramax 6.6L, 2.8L 08-10 Duramax 6.6L, 2.8L	<b> CAMARO, CAMARO</b> 1999-2002 Duramax 6.6L, 2.8L 2003-2006 Duramax 6.6L, 2.8L 2007-2010 Duramax 6.6L, 2.8L 2011-2013 Duramax 6.6L, 2.8L			

Search by Vehicle Platform

WHICH STAGE-2 IS RIGHT FOR YOU?			
STAGE 2	STAGE 2	STAGE 2	STAGE 2
<b> STAGE 2 PART 1</b> 1.5-2.0 Duramax 6.6L, 2.8L 2.0-2.8 Duramax 6.6L, 2.8L 3.0-3.6 Duramax 6.6L, 2.8L 4.0-4.8 Duramax 6.6L, 2.8L 5.0-5.7 Duramax 6.6L, 2.8L	<b> STAGE 2 PART 2</b> 1.5-2.0 Duramax 6.6L, 2.8L 2.0-2.8 Duramax 6.6L, 2.8L 3.0-3.6 Duramax 6.6L, 2.8L 4.0-4.8 Duramax 6.6L, 2.8L 5.0-5.7 Duramax 6.6L, 2.8L	<b> STAGE 2 PART 3</b> 1.5-2.0 Duramax 6.6L, 2.8L 2.0-2.8 Duramax 6.6L, 2.8L 3.0-3.6 Duramax 6.6L, 2.8L 4.0-4.8 Duramax 6.6L, 2.8L 5.0-5.7 Duramax 6.6L, 2.8L	<b> STAGE 2 PART 4</b> 1.5-2.0 Duramax 6.6L, 2.8L 2.0-2.8 Duramax 6.6L, 2.8L 3.0-3.6 Duramax 6.6L, 2.8L 4.0-4.8 Duramax 6.6L, 2.8L 5.0-5.7 Duramax 6.6L, 2.8L

Educational Buyer's Guides



Detailed Product Descriptions



Verified Performance Numbers & Dyno Charts



***aFepower.com***

© 2022 aFe POWER • 1375 Sampson Avenue • Corona, CA 92879 • PN: 40-20131