



# MARWIN SPORTS

PERFORMANCE APPAREL · 2019 CATALOG

A dense forest of evergreen trees covering a hillside, with the text '# BUILT FOR ADVERSITY' overlaid in white.

**# BUILT FOR ADVERSITY**

<b>OUR STORY</b>	4
<b>TECH</b>	5
<b>TOPS</b>	7
<b>BOTTOMS</b>	18
<b>OUTERWEAR</b>	27
<b>ACCESSORIES</b>	36
<b>CUSTOMIZATION</b>	42



# OUR STORY

Founded in Sweden in 1980. Since its inception, our mission has been consistent: to design and build premium apparel that is true and reliable, fit for the rugged demands of all that life throws at us. We are born in Sweden, the precision of every cut, fold and stitch is one that's guided by decades of experience.

In 2019, the company was launched in the US to identify apparel issues and bring tangible solutions to various industries. The U.S. founders have diverse backgrounds in professional sports ranging from basketball to auto-racing. With their passion and

experience, they will bring innovative technology and apparel solutions to countless individuals and organizations. We are a leading technology brand first, and while we design and create apparel, all our products will be unique and special with eco-friendly technology that has yet to be experienced.

To learn more about our story, ambitions and philanthropic goals, please visit [marwinsports.com/ourstory](https://marwinsports.com/ourstory).

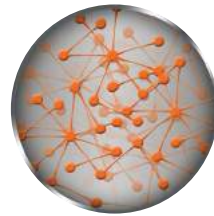


# TECH



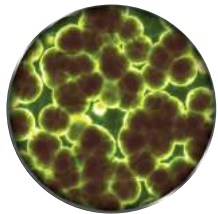
## **Water-Resistance:**

We are able to create an invisible hydrophobic barrier against any liquid without modifying the fabrics appearance, texture or breathability! Our formula creates 121 degree high contact angle surfaces that visibly repel liquid.



## **Non-Toxic Nanotechnology:**

Although we achieve our resistances with nanotechnology and chemistry, our tech is 100% non-toxic silicone based, safe for your skin and our environment.



## **Microbial-Resistance:**

Marwin products not only repel water but also repel 99% of bacteria from external contaminants. This also includes sweat which contributes to the foul odor on garments. To remove any bacteria adhesion, simply rinse fabrics with water.



## **Eco-Friendly:**

With our technology, together we can help reduce our carbon footprint. In the manufacturing phase and for you as a consumer, we can eliminate traditional detergents while cleaning to achieve identical results.

# SNAPGUARD PROTECTION

Marwin Sports has partnered with leading eco-friendly nanotechnology company Snapguard Solutions to offer exclusive performance and technology in all our products direct from our factories.

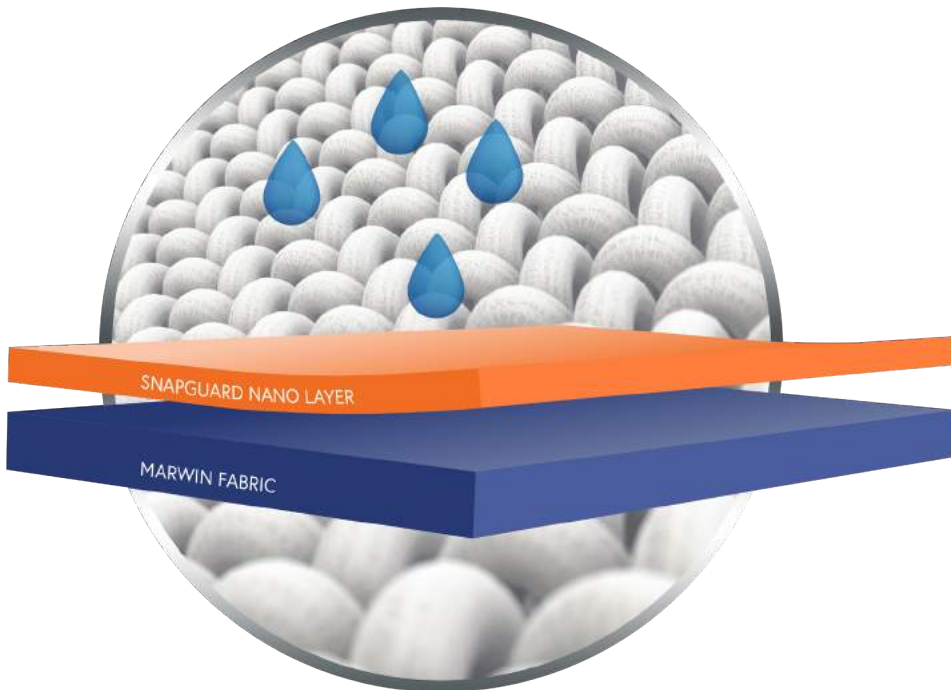
It's very simple. Our 100% non-toxic and eco-safe silicone based solution does not change the feel, smell or look of any of our garments. It is truly invisible but once you see it in action, you will be amazed at the strength and performance of this technology.

Most DWR (durable water repellent) clothing achieve their water resistance with two man-made perfluorochemicals (PFOS or PFOA), read more online at [www.ewg.org](http://www.ewg.org) about these toxic chemicals and what they do to us and the environments around us.

While your garment will come with Snapguard protection, this is not permanent and it will be important to follow our wash instructions to ensure longevity. With proper washing, you can expect an average of 20 washes with hydrophobic effect still lasting. However, don't worry, you can purchase a care kit from us to safely treat and reapply this tech to your Marwin gear.

Snapguard Protection...

Safe for YOU and the ENVIRONMENT!



Marwin Sports 100% jersey cotton  
polo with Snapguard Protection

# TOPS

Versatile and stylish. Whether you need a custom cotton polo or a sublimated t-shirt on performance polyester, we have you covered with high-quality fabrics and non-toxic Snapguard protection.



### TRADITIONAL TEE

SKU #M-20099-20000

Marwin Sports classic cotton tee has been a customer favorite for decades. Made with 100% ring spun American cotton and liquid resistant Snapguard protection. Shirts will have Snapguard protection for liquid, stain and microbial bacteria resistance stemming from sweat inside and out.

Colors:



and over 120 more, see our website for detailed list



### PRODUCT FEATURES

- Classic Fit
- Durable rib-knit crew neck
- Set-in, open hem sleeves
- Marwin Sports signature stripes on the upper back and logomark on left sleeve
- Available in men's sizes XS-4XL and ladies sizes XS-2XL

### FABRIC DETAILS

- 4.5-ounce, 100% ring spun cotton



### CUSTOMIZATION\*

- Color choices above available for any special shirt design order
- MOQ 100 for custom dyed cotton color, any pantone
- Logos can be applied in three ways, embroidery, screen printing and heat-transfer. Please see customization section on page 42 for more info.

\*Please inquire for customization and special group or team pricing



## FULL SUBLIMATION TEE

SKU #M-20099-20001

Using our classic fit t-shirt pattern, we can fully subliminate your design or one we create for you. The highest quality printing on ultra light and breathable polyester. Water, sweat and oil resistant Snappguard protection for those who want to keep their crew and sponsors happy!



Hex-Tex Fabric



Classic Birdseye Fabric

## PRODUCT FEATURES

- Classic Fit
- Durable rib-knit crew neck
- Set-in, open hem sleeves
- Marwin Sports signature stripes on the upper back and logomark on left sleeve
- Available in men's sizes XS-4XL and ladies sizes XS-2XL

## FABRIC DETAILS

- Two 100% Polyester fabric choices: classic birdseye or hex-tex



## CUSTOMIZATION\*

- Go online for template to design your own, or ask us about creating your design!
- MOQ 50 for custom order
- Logos and design can be applied thru sublimation printing only. Please see customization section on page 42 for more info.

\*Please inquire for customization and special group or team pricing

### PERFORMANCE TEE

SKU #M-20099-20002

Our performance tee is for those who want a synthetic fabric with the greatest moisture wicking properties^ and produced with our classic fit t-shirt pattern. Shirts will have Snapguard protection for liquid, stain and microbial bacteria resistance stemming from sweat inside and out.

Colors:



and over 65 more, see our website for detailed list



### PRODUCT FEATURES

- Classic Fit
- Durable rib knit crew neck
- Set-in, open hem sleeves
- Marwin Sports signature stripes on the upper back and logomark on left sleeve
- Available in men's sizes XS-4XL and ladies sizes XS-2XL

### FABRIC DETAILS

- 4.5-ounce, 100% Polyester stay dry moisture wick



### CUSTOMIZATION\*

- Color choices above available for any special shirt design order
- MOQ 100 for custom dyed poly cotton color, any pantone
- Logos can be applied in three ways, embroidery, screen printing and heat-transfer. Please see customization section on page 42 for more info.

^Moisture wicking properties are affected if shirts ordered with Snapguard protection. Garment will be fully breathable but will not absorb moisture. Fabric will still pull body heat and vapors from the skin.

\*Please inquire for customization and special group or team pricing



## CLASSIC POLO

SKU #M-20099-20003 Jersey  
SKU #M-20099-20004 Pique

Made with 100% smooth jersey or textured pique cotton. Traditional in look and style, yet modern in comfort and technology. Shirts will have Snappguard protection for liquid, stain and microbial bacteria resistance stemming from sweat inside and out.

Colors:



and over 25 more, see our website for detailed list



## PRODUCT FEATURES

- Classic Fit
- Flat knit collar
- Set-in, open hem sleeves
- 3-button placket or YKK® zipper
- Marwin Sports signature stripes on the upper back and logomark on left sleeve
- Available in men's sizes XS-4XL and ladies sizes XS-2XL

## FABRIC DETAILS

- 6.5-ounce, 100% Pique or Jersey Cotton



**Snappguard Protected**

## CUSTOMIZATION\*

- Color choices above available for any special shirt design order
- MOQ 100 for custom dyed cotton color, any pantone
- Option to add mesh side vents, 1/4 zipper, chest pocket and/or sleeves.
- Logos can be applied in three ways, embroidery, screen printing and heat-transfer. Please see customization section on page 42 for more info.

\*Please inquire for customization and special group or team pricing

### FULL SUBLIMATION POLO

SKU #M-20099-20005

Using our classic polo pattern, we can fully sublimate your design or one we create for you. The highest quality printing on ultra-light breathable polyester. Water, sweat and oil resistant Snapguard protection for those who want to keep their crew and sponsors happy!



Hex-TEX Fabric



Classic Birdseye Fabric

### PRODUCT FEATURES

- Classic Fit
- Flat collar with button snaps
- Set-in, open hem sleeves
- 3-button placket or 1/4 YKK® zipper
- Marwin Sports signature stripes on the upper back and logomark on left sleeve
- Available in men's sizes XS-4XL and ladies sizes XS-2XL

### FABRIC DETAILS

- Two 100% Polyester fabric choices: classic birdseye or hex-tex



### CUSTOMIZATION\*

- Go online for template to design your own, or ask us about creating your design for you!
- MOQ 50 for custom order
- Option to add mesh side vents, 1/4 zipper, 3-button placket, chest pocket and/or sleeves.
- Logos and design can be applied thru sublimation printing only. Please see customization section on page 42 for more info.

\*Please inquire for customization and special group or team pricing



## PERFORMANCE POLO

SKU #M-20099-20006

A customer favorite! Get the best performance in class with our breathable, moisture-wicking^ and highest quality stretch jersey. Try with our optional mesh side vents. Shirts will have Snapguard protection for liquid, stain and microbial bacteria resistance stemming from sweat inside and out.

Colors:



and over 50 more, see our website for detailed list



## PRODUCT FEATURES

- Classic Fit
- Flat knit collar
- Set-in, open hem sleeves
- 3-button placket or 1/4 YKK® zipper
- Marwin Sports signature stripes on the upper back and logomark on left sleeve
- Available in men's sizes XS-4XL and ladies sizes XS-2XL

^Moisture wicking properties are affected if shirts ordered with Snapguard nano-coating. Garment will still be fully breathable but will not absorb moisture.

\*Please inquire for customization and special group or team pricing

## FABRIC DETAILS

- 5.5-ounce, 94% Polyester, 6% Spandex jersey



**Snapguard Protected**

## CUSTOMIZATION\*

- Color choices above available for any special shirt design order
- MOQ 100 for custom dyed polyester color, any pantone
- Option to add mesh side vents, 1/4 zipper, 3-button placket, chest pocket and/or sleeves.
- Logos can be applied in three ways, embroidery, screen printing and heat-transfer. Please see customization section on page 42 for more info.

### COTTON BUTTON-UP

SKU #M-20099-20007

A traditional look with contemporary technology, our cotton button-up is perfect for you! Ultra soft and durable cotton with infused spandex for just enough stretch. Shirts will have Snapguard protection for liquid, stain and microbial bacteria resistance stemming from sweat inside and out.

Colors:



and over 25 more, see our website for detailed list



### PRODUCT FEATURES

- Classic Fit
- Button-down collar
- Horn-tone buttons
- Set-in, open hem sleeves
- Removable collar stays
- Marwin Sports signature stripes on upper back and logomark on left sleeve
- Available in men's sizes XS-4XL and ladies sizes XS-2XL

### FABRIC DETAILS

- 6-ounce, 95% cotton and 5% spandex



### CUSTOMIZATION\*

- Color choices above available for any special shirt design order
- MOQ 100 for custom dyed cotton color, any pantone
- Option to add chest pocket
- Logos can be applied in three ways, embroidery, screen printing and heat-transfer. Please see customization section on page 42 for more info.

\*Please inquire for customization and special group or team pricing



## COTTON DRESS SHIRT

SKU # M-20099-20008

This American cotton dress shirt is silky smooth with just enough stretch for comfort. Shirts will have Snappguard protection against spills, stains and bacteria stemming from sweat. The perfect dress shirt for management and executives. No more worrying about coffee or wine spills!

Colors:



and over 10 more, see our website for detailed list



### PRODUCT FEATURES

- Classic Fit
- Button-down collar
- Horn-tone buttons
- Regular cuff
- Removable collar stays
- Marwin Sports signature stripes on the upper back and logomark on left sleeve
- Available in men's sizes XS-4XL and ladies sizes XS-2XL

### FABRIC DETAILS

- 5-ounce, 95% cotton and 5% spandex



### CUSTOMIZATION\*

- Color choices above available for any special shirt design order
- MOQ 100 for custom dyed cotton color, any pantone
- Option to add chest pocket
- Logos can be applied in three ways, embroidery, screen printing and heat-transfer. Please see customization section on page 42 for more info.

\*Please inquire for customization and special group or team pricing

### CLASSIC LONG-SLEEVE

SKU #M-20099-20007

Made with 100% smooth jersey or textured pique cotton. Traditional in look and style, yet modern in comfort and technology. Shirts will have Snapguard protection for liquid, stain and microbial bacteria resistance stemming from sweat inside and out.

Colors:



and over 25 more, see our website for detailed list



### PRODUCT FEATURES

- Classic Fit
- Flat knit collar
- Long cuffed sleeves
- 3-button placket or YKK® zipper
- Marwin Sports signature stripes on the upper back and logomark on left sleeve
- Available in men's sizes XS-4XL and ladies sizes XS-2XL

### FABRIC DETAILS

- 6.5-ounce, 100% Pique or Jersey Cotton



Snapguard Protected

### CUSTOMIZATION\*

- Color choices above available for any special shirt design order
- MOQ 100 for custom dyed cotton color, any pantone
- Option to add mesh side vents, 1/4 zipper, chest pocket and/or sleeves.
- Logos can be applied in three ways, embroidery, screen printing and heat-transfer. Please see customization section on page 42

\*Please inquire for customization and special group or team pricing





## HIGH VISIBILITY SHIRT

SKU # M-20099-20008

Our high visibility tee is for those who want a hybrid cotton and synthetic fabric with the greatest moisture wicking properties^\*. Produced with our classic fit t-shirt pattern. Shirts will have Snappguard protection for liquid, stain and microbial bacteria resistance stemming from sweat inside and out.

Colors:



### PRODUCT FEATURES

- Classic fit
- Seamless double needle 7/8" collar
- Taped neck and shoulders
- Double needle sleeve and bottom hems
- Quarter-turned to eliminate center crease
- Safety Green: Compliant with ANSI / ISEA 107

### FABRIC DETAILS

- 50% Cotton/ 50% Polyester



### CUSTOMIZATION\*

- Color choices above available for any special shirt design order
- MOQ 100 for custom dyed cotton color, any pantone
- Logos can be applied in three ways, embroidery, screen printing and heat-transfer. Please see customization section on page 42 for more info.

\*Please inquire for customization and special group or team pricing



# BOTTOMS

While outerwear is our history and foundation, our pants are what will have you convinced. Whether you're wearing our cargo crew, dress performance, or everyday denim, you will never look elsewhere in the pants department again. Not only are our pants made with stretchable and durable fabrics, add in the Snapguard protection making them water and oil resistant to help keep out stains and dirt!



**COTTON CARGO PANTS**

SKU #M-30099-30000

Lightweight and durable, our cotton cargo pants are ultra soft with enough stretch to improve comfort and mobility. Built to last with special magnetic cargo pocket covers so you never worry about velcro wearing out. Pants will have Snapguard protection for liquid, microbial and stain resistance inside and out.

Colors:



**PRODUCT FEATURES**

- Traditional Fit
- Hip-mounted D-ring
- YKK® zippers
- Magnetic pocket covers
- 8 total pockets
- Hidden zipper in left pocket
- Gussets for flexibility
- Marwin Sports signature logomark on right hip and back pocket
- Available in men's and ladies standard sizes

**FABRIC DETAILS**

- 5.5-ounce, 97% cotton, 3% spandex



**CUSTOMIZATION**

- Color choices above available for any special pant design order
- MOQ 500 for custom dyed cotton color, any pantone
- Logos can be applied in three ways, embroidery, screen printing and heat-transfer. Please see customization section on page 42 for more info.

\*Please inquire for customization and special group or team pricing

**HI-TECH CARGO PANTS**

SKU #M-30099-30001

Lightweight and comfortable, yet rugged and durable. Our hi-tech cargo is made stretchable poly cotton that is true rip-stop. Built to last with special magnetic cargo pocket covers so you never worry about velcro wearing out. Pants will have Snapguard protection for liquid, microbial and stain resistance inside and out.

Colors:



**PRODUCT FEATURES**

- Traditional Fit
- Hip-mounted D-ring
- YKK® zippers
- Magnetic pocket covers
- 8 total pockets
- Hidden zipper in left pocket
- Gussets for flexibility
- Marwin Sports signature logomark on right hip and back pocket
- Available in men's and ladies standard sizes

**FABRIC DETAILS**

- 6.3-ounce, 65% Polyester, 35% cotton ultra-durable rip-stop



**CUSTOMIZATION**

- Color choices above available for any special pant design order
- MOQ 500 for custom dyed poly cotton color, any pantone
- Logos can be applied in three ways, embroidery, screen printing and heat-transfer. Please see customization section on page 42 for more info.

\*Please inquire for customization and special group or team pricing



**COTTON CARGO SHORTS**

SKU #M-30099-30002

Ultra soft cargo shorts with enough stretch to provide comfort and mobility. Built to last with special magnetic cargo pocket covers so you never worry about velcro wearing out. Perfect for hot days on the racetrack. Shorts will have Snapguard protection for liquid, microbial and stain resistance inside and out.

Colors:



**PRODUCT FEATURES**

- Traditional Fit
- Hip-mounted D-ring
- YKK® zippers
- Magnetic pocket covers
- 8 total pockets
- Hidden zipper in left pocket
- Gussets for flexibility
- Marwin Sports signature logomark on right hip and back pocket
- Available in men's and ladies standard sizes

**FABRIC DETAILS**

- 5.5-ounce, 97% cotton, 3% spandex



**CUSTOMIZATION**

- Color choices above available for any special short design order
- MOQ 500 for custom dyed cotton color, any pantone
- If you are in between standard sizes, on custom orders we can make shorts specific to your dimensions.

\*Please inquire for customization and special group or team pricing

**HI-TECH CARGO SHORTS**

SKU #M-30099-30003

Lightweight, comfortable, rugged and durable. Our hi-tech cargo shorts are made with the stretchy poly cotton that is true rip-stop. Built to last with magnetic cargo pocket covers. Perfect for hot days on the racetrack. Shorts will have Snapguard protection for liquid, microbial and stain resistance inside and out.

Colors:



**PRODUCT FEATURES**

- Traditional Fit
- YKK® zippers
- Hip-mounted D-ring
- Magnetic pocket covers
- 8 total pockets
- Hidden zipper in left pocket
- Gussets for flexibility
- Marwin Sports signature logomark on right hip and back pocket
- Available in men's and ladies standard sizes

**FABRIC DETAILS**

- 6.3-ounce, 65% Polyester, 35% Cotton ultra-durable rip-stop



**CUSTOMIZATION**

- Color choices above available for any special short design order
- MOQ 500 for custom dyed poly cotton color, any pantone
- If you are in between standard sizes, on custom orders we can make shorts specific to your dimensions.

\*Please inquire for customization and special group or team pricing



**PERFORMANCE DRESS PANTS**

SKU #M-30099-30004

A dress pant that is ideal for the boardroom or the racetrack. Any executive or working professional will love the comfort and versatility of this pant. With Snapguard protection, this ultimate dress pant is soft and breathable, yet liquid, microbial and stain resistant inside and out.

Colors:



**PRODUCT FEATURES**

- Contemporary Fit
- YKK® zippers
- 5 total pockets
- Hidden zipper in left pocket
- Marwin Sports signature logomark on right back pocket
- Available in mens and ladies standard sizes

**FABRIC DETAILS**

- 85% Polyester, 15% Rayon



**CUSTOMIZATION**

- Color choices above available for any special pant order
- MOQ 500 for custom dyed pant color, any pantone
- Optional hip-mounted D-ring
- If you are in between standard sizes, on custom orders we can make pants specific to your dimensions.

\*Please inquire for customization and special group or team pricing

**PERFORMANCE SHORTS**

SKU # M-30099-30005

These shorts were designed with the highest comfort and performance in mind. They are amazingly soft and breathable yet durable for anything you have in mind. The perfect short for the golf-course and will have Snapguard protection for liquid, microbial and stain resistance inside and out.

Colors:



**PRODUCT FEATURES**

- Contemporary Fit
- YKK® zippers
- 5 total pockets
- Hidden zipper in left pocket
- Marwin Sports signature logomark on right back pocket
- Available in mens and ladies standard sizes

**FABRIC DETAILS**

- 85% Polyester, 15% Rayon



**CUSTOMIZATION**

- Color choices above available for any special short design order
- MOQ 500 for custom dyed poly cotton color, any pantone
- If you are in between standard sizes, on custom orders we can make shorts specific to your dimensions.

\*Please inquire for customization and special group or team pricing





**DENIM JEANS**

SKU #M-30099-30006

Marwin Sports will offer 4 styles of denim and we are confident they will be the most comfortable jeans you've ever owned. Made with American cotton, our denim moves with you and is embedded with Snapguard protection for liquid, microbial and stain resistance inside and out.

Colors:



**PRODUCT FEATURES**

- Fit depending on jeans style: Slim, Straight, Loose, Bootcut
- Ultra comfortable stretch fabric
- YKK® zipper fly with button closure
- Marwin Sports signature logomark and patch

**FABRIC DETAILS**

- 98% Cotton, 2% Spandex



**CUSTOMIZATION**

- Color choices above available for any special pant order
- MOQ 500 for custom dyed cotton color, any pantone
- If you are in between standard sizes, on custom orders we can make pants specific to your dimensions.

\*Please inquire for customization and special group or team pricing

**COLD-WEATHER PANTS**

SKU # M-30099-30007

These pants were designed with the highest comfort and performance in cold weather. They are windproof, wear-resistant, warm yet they breathe freely and will have Snapguard protection for liquid, microbial and stain resistance inside and out.

Colors:



**PRODUCT FEATURES**

- Contemporary Fit
- YKK® zippers
- 5 total pockets
- Hidden zipper in left pocket
- Marwin Sports signature logomark on right back pocket
- Available in mens and ladies standard sizes

**FABRIC DETAILS**

- 100% polyester with fleece Lining



**CUSTOMIZATION**

- Color choices above available for any special short design order
- MOQ 500 for custom dyed poly cotton color, any pantone
- If you are in between standard sizes, on custom orders we can make pants specific to your dimensions.

\*Please inquire for customization and special group or team pricing

# OUTERWEAR

Our story began with outerwear and after nearly 40 years of designing and producing, we still have your back...

Wright Motorsports in their Marwin  
custom 3-1 Heavy Jacket



### CLASSIC HOODIE

SKU #M-40099-40000

A customer favorite! Get the best performance in class with our breathable stretch hoodie made with the highest quality cotton poly. Try it with our optional two-tone ribbed side for a unique style. Hoodie will have Snagguard protection for liquid, microbial and stain resistance inside and out.

Colors:



and over 25 more, see our website for detailed list



### PRODUCT FEATURES

- Classic Fit
- Rib knit cuffs and hem
- Lined 3-panel hood
- Wide drawstrings
- Marwin Sports signature logomark on left sleeve
- Available in men's sizes XS-4XL and ladies sizes XS-2XL

### FABRIC DETAILS

- 8-ounce,75/25 cotton/poly French terry



### CUSTOMIZATION

- Color choices above available for any special design order
- MOQ 500 for custom dyed color, any pantone
- Option to add ribbed side panels
- Logos can be applied in three ways, embroidery, screen printing and heat-transfer. Please see customization section on page 42 for more info.

\*Please inquire for customization and special group or team pricing

## LIGHTWEIGHT PERFORMANCE

SKU #M-40099-40001

This sleek and modern styled jacket is extremely lightweight yet wind-resistant and fully waterproof. Jacket will have Snapguard protection for liquid, microbial and stain resistance inside and out.



Colors:



and over 30 more, see our website for detailed list

## PRODUCT FEATURES

- Classic Fit
- Wind resistant
- YKK® zippers
- Set-in sleeves with adjustable self-fabric tab cuffs
- Adjustable hood with drawstring toggles
- Marwin Sports signature logomark on left sleeve
- Available in men's sizes XS-4XL and ladies sizes XS-2XL

## FABRIC DETAILS

- 100% poly laminated shell with stretch tricot lining



**Snapguard Protected**

## CUSTOMIZATION

- Color choices above available for any special design order
- MOQ 500 for custom dyed polyester color, any pantone
- Logos can be applied in three ways, embroidery, screen printing and heat-transfer. Please see customization section on page 42 for more info.

\*Please inquire for customization and special group or team pricing

**LIGHTWEIGHT PUFFY**

SKU #M-40099-40007

Our lightest jacket yet engineered with layering to keep you warm and dry. This is the inner jacket on our 3-1 style heavy jacket and will have Snapguard protection for liquid, microbial and stain resistance inside and out.

Colors:



**PRODUCT FEATURES**

- Classic Fit
- YKK® zippers
- Elastic cuffs
- Secure fleece lined zip hand pockets
- Interior left chest zipper pocket
- Fleece lined collar
- Marwin Sports signature logomark on left sleeve
- Available in men's sizes XS-4XL and ladies sizes XS-2XL

**FABRIC DETAILS**

- 100% nylon



**CUSTOMIZATION**

- Color choices above available for any special design order
- MOQ 500 for custom dyed polyester color, any pantone
- Logos can be applied in three ways, embroidery, screen printing and heat-transfer. Please see customization section on page 42 for more info.

\*Please inquire for customization and special group or team pricing



**V-NECK SWEATER**

SKU #M-40099-40002

A timeless classic. Perfect over our polos for a professional and fashionable look that increases warmth with minimal weight and thickness. Sweater will have Snapguard protection for liquid, microbial and stain resistance inside and out.

Colors:

**PRODUCT FEATURES**

- Classic Fit
- Rib-knit v-neck
- Rib-knit elastic cuffs
- Marwin Sports signature logomark on left sleeve
- Available in men's sizes XS-4XL and ladies sizes XS-2XL

**FABRIC DETAILS**

- 60% Cotton and 40% Nylon

**Snapguard Protected****CUSTOMIZATION**

- Color choices above available for any special design order
- MOQ 500 for custom dyed color, any pantone
- Logos can be applied in three ways, embroidery, screen printing and heat-transfer. Please see customization section on page 42 for more info.

\*Please inquire for customization and special group or team pricing

### ZIP VEST WITH HOOD

SKU #M-40099-40003

Multi-layer hooded jacket yet sleeveless to increase comfort and mobility. Perfect for those days it's too hot for a full jacket yet too cold for only a shirt. Jacket will have Snapguard protection for liquid, microbial and stain resistance inside and out.



Colors:



and over 30 more, see our website for detailed list

### PRODUCT FEATURES

- Classic Fit
- YKK® zippers
- Magnetic pocket covers
- Drawstrings with collared hood
- Warm and abrasion-resistant soft shell vest
- Wind resistant
- Marwin Sports signature logomark on left sleeve
- Available in men's sizes XS-4XL and ladies sizes XS-2XL

### FABRIC DETAILS

- 100% Polyester



### CUSTOMIZATION

- Color choices above available for any special design order
- MOQ 500 for custom dyed polyester color, any pantone
- Logos can be applied in three ways, embroidery, screen printing and heat-transfer. Please see customization section on page 42 for more info.

\*Please inquire for customization and special group or team pricing





## CLASSIC SOFTSHELL

SKU #M-40099-40004

The softshell jacket is a staple with any team or organization. Stylish, versatile and down-right comfortable with its fleece lining. Softshell will have Snapguard protection for liquid, microbial and stain resistance inside and out.



Colors:



and over 5 more, see our website for detailed list

## PRODUCT FEATURES

- Classic Fit
- Wind resistant
- Side pockets and chest pocket with inner lining, inside-out zippers and cord pulls
- Full zip with inner storm flap and zip neck protector at collar
- Marwin Sports signature logomark on left sleeve
- Available in men's sizes XS-4XL and ladies sizes XS-2XL

## FABRIC DETAILS

- 90% Polyester, 10% Elastane (3 layer Softshell fabric)



**Snapguard Protected**

## CUSTOMIZATION

- Color choices above available for any special design order
- MOQ 500 for custom dyed polyester color, any pantone
- Logos can be applied in three ways, embroidery, screen printing and heat-transfer. Please see customization section on page 42 for more info.

\*Please inquire for customization and special group or team pricing

**HOODED BOMBER STYLE**

SKU #M-40099-40005

The bomber style, otherwise known as flight jacket is a classic hooded zip with elastic cuffs and waist. Practical yet stylish cotton exterior and nylon lined jacket. Jacket will have Snapguard protection for liquid, microbial and stain resistance inside and out.

Colors:



and over 25 more, see our website for detailed list



**PRODUCT FEATURES**

- Classic Fit
- Side pockets and YKK® chest pocket with inner lining
- Lined; Straight hem
- Drawstrings with collared hood
- Warm and abrasion-resistant soft shell vest
- Marwin Sports signature logomark on left sleeve
- Available in men's sizes XS-4XL and ladies sizes XS-2XL

**FABRIC DETAILS**

- 80% Cotton, 20% Nylon interior



**CUSTOMIZATION**

- Color choices above available for any special design order
- MOQ 500 for custom dyed cotton color, any pantone
- Logos can be applied in three ways, embroidery, screen printing and heat-transfer. Please see customization section on page 42 for more info.

\*Please inquire for customization and special group or team pricing



## 3 IN 1 HEAVY JACKET

SKU #M-40099-40006

The ultimate multi-purpose jacket Marwin Sports has to offer. This jacket can be 3 styles of versatile jackets and is highly recommended by our team to give your organization multiple options. Jacket will have Snapguard protection for liquid, microbial and stain resistance inside and out.

Colors:



and over 20 more, see our website for detailed list



### PRODUCT FEATURES

- Classic Fit
- Wind resistant
- YKK® zippers
- Set-in sleeves with adjustable self-fabric tab cuffs
- Adjustable hood that can be zipped away
- Marwin Sports signature logomark on left sleeve
- Available in men's sizes XS-4XL and ladies sizes XS-2XL

### FABRIC DETAILS

- 100% poly laminated shell with stretch tricot lining



**Snapguard Protected**

### CUSTOMIZATION

- Color choices above available for any special design order
- MOQ 500 for custom dyed cotton color, any pantone
- Logos can be applied in three ways, embroidery, screen printing and heat-transfer. Please see customization section on page 42 for more info.

\*Please inquire for customization and special group or team pricing

# ACCESSORIES

Marwin Sports offers our customers diverse customizable headwear options, all treated with SnapGuard Solutions nanotechnology.



**STRUCTURED STRETCH FIT**

SKU #M-10099-10000

Classic Flex Fit hat with two stretch style sizes. Hats will have Snapguard protection for liquid, microbial and stain resistance inside and out.



Colors:

**PRODUCT FEATURES**

- 6 panel
- Mid-profile fitted cap
- Fused hard buckram
- 3 1/2" crown
- 8 rows of stitching on Perma-curv visor
- Silver Under-visor
- Taped seams
- Available in size S/M (6 3/4" - 7 1/4") or L/XL (7 1/8" - 7 5/8")

**FABRIC DETAILS**

- 98% Cotton, 2% Spandex

**CUSTOMIZATION**

- Color choices above available for any special design order
- MOQ 500 for custom dyed color, any pantone
- Logos can be applied by screen printing or embroidery. Please see customization section on page 42 for more info.

\*Please inquire for customization and special group or team pricing

## CLASSIC ADJUSTABLE

SKU #M-10099-10001

Classic adjustable style hat with snapback or velcro for one size fits most. Hats will have Snappguard protection for liquid, microbial and stain resistance inside and out.



Colors:



### PRODUCT FEATURES

- Adjustable matching hook & loop closure or snapback Technology
- Moisture wicking & quick drying
- Performance sweatband
- Matching undervisor
- One-size-fits-most

### FABRIC DETAILS

- 97% Polyester, 3% Spandex



### CUSTOMIZATION

- Color choices above available for any special design order
- MOQ 500 for custom dyed cotton color, any pantone
- Logos can be applied by screen printing or embroidery. Please see customization section on page 42 for more info.

\*Please inquire for customization and special group or team pricing

## 5-PANEL TRUCKER SNAP

SKU #M-10099-10002

Trucker style hat with snapback for one size fits most. Option for flat bill or Permacurv visor. Hats will have Snapguard protection for liquid, microbial and stain resistance inside and out.



Colors:



### PRODUCT FEATURES

- 5 panel cap with buckram front lining, classic mesh back, quilted comfort sweatband
- Flat visor, 4" crown, 8 rows of stitching
- Matching plastic adjustable strap
- One-size-fits-most

### FABRIC DETAILS

- 47% cotton, 25% polyester, 28% nylon



**Snapguard Protected**

### CUSTOMIZATION

- Color choices above available for any special design order
- MOQ 500 for custom dyed cotton color, any pantone
- Logos can be applied by screen printing or embroidery. Please see customization section on page 42 for more info.

\*Please inquire for customization and special group or team pricing

**KNIT BEANIE**

SKU #M-10099-10003 Classic  
SKU #M-10099-10004 Cuffed

Three styles of beanies pictured left to right, Classic Knit, Cuffed Knit or Cuffed Pom Pom style. Beanies will have Snappguard protection for liquid, microbial and stain resistance inside and out.



Colors:



and over 15 more, see our website for detailed list

**PRODUCT FEATURES**

- Super dense knit for easy embroidery. Hand washable.
- Option to order in Classic Knit, Cuffed Knit or Cuffed Pom Pom style
- One-size-fits-most

**FABRIC DETAILS**

- 100% Hypoallergenic Acrylic



**CUSTOMIZATION**

- Color choices above available for any special design order
- MOQ 500 for custom dyed cotton color, any pantone
- Logos can be applied by embroidery. Please see customization section on page 42 for more info.

\*Please inquire for customization and special group or team pricing



## RATCHET BELT IC BUCKLE

SKU #M-10099-10002

No Hole Belt provides 38 unique adjustments for an extremely comfortable fit. Easy removable buckle allows you to use a simple scissor to cut the ratchet belt to your ideal size to give a trimmer and custom-tailored appearance!

Colors:



## PRODUCT FEATURES

- 38 way adjustable fit
- Simple, smooth and sleek
- Stainless Steel Pieces
- One-size-fits-most

## FABRIC DETAILS

- 1 and an 1/8" Thickness
- Genuine Leather, Genuine Leather with carbon fiber inlay



## CUSTOMIZATION

- Color choices above available for any special design order
- MOQ 500 for custom dyed cotton color, any pantone
- Logos can be applied by screen printing or embroidery. Please see customization section on page 42 for more info.

\*Please inquire for customization and special group or team pricing



# CUSTOMIZATION

## **MOQ:**

Please reference each product page for minimum order quantity to customize fabric colors on each specific product. For each product, we have MOQ of 25 pieces if you are only customizing the logos. To customize the design with color choices available our MOQ is 50 pieces. For information on pricing breakdown on larger volume orders over 100 pieces, please email to [info@marwinusa.com](mailto:info@marwinusa.com)

## **LOGO OPTIONS:**

**Embroidery:** High-density decorative stitching. Pros are durability and classic appearance while cons are higher cost, longer lead-time and added weight.

**Sublimation:** High detail printing directly onto polyester fabric. Pros are easy to print exact colors and intricate design/logos with lower cost while cons are a limited choice in material and products.

**Screen Print:** a Print technique using woven mesh to support ink stopping stencil. Pros are a high durability and quality of logos while cons are a higher cost on low volume and longer lead-time.

**Heat-Transfer Print:** Highest detail print transferring logos to any product material. Pros are durability and perfect for our waterproof fabrics while cons are a higher cost on low volume orders and longer lead-time.

Sublimation



Embroidery



Embroidery



Sublimation



## SAMPLES OF OUR CUSTOM CREATIONS



Screen Rubber Print



Heat-Transfer Print



Sublimation



Heat-Transfer Print



**PERFORMANCE APPAREL · 2019 CATALOG**

READY TO INQUIRE?

323.926.9152

[info@marwinusa.com](mailto:info@marwinusa.com)

Marwin USA

3364 Garfield Avenue  
Los Angeles, CA 90040

[www.marwinusa.com](http://www.marwinusa.com)