



Intercomp[®]
advanced weighing technology . . . by any measure



40
YEARS



Since 1978, Intercomp has produced the highest quality weighing and measurement solutions across multiple industries. For the majority of that time, we have served the racing industry, and have continued to provide the exact same measure of expertise and determination to be the best in support of our world-wide motorsport customer base that we have displayed in the other global industries we serve. Throughout that time, we have had the opportunity to meet many great people who share our passion and drive toward excellence. We look forward to providing for the motorsports industry with the same level of service and performance for the next 40 years, and beyond.



OUR FIRM

At Intercomp, we design and manufacture weighing and measurement solutions, serving many different industries and leveraging innovations from each to improve all of our products. Scales and measurement equipment are what we do, what we know, what we're good at. So when deciding what set-up equipment to buy, choose the company with more than 40 years of experience, the company headquartered in the USA with a full ISO 9001:2008 registered manufacturing facility, the company chosen by teams and champions in all forms of motorsports, worldwide, as their preferred scale and chassis set-up partner.



JOE GIBBS RACING | NASCAR
Toyota trademarks used with permission. © 2017 Joe Gibbs Racing, Inc.

INDUSTRY INNOVATIONS

- **PULL BAR RATER**
- **DIGITAL BUMP STOP RATER**
- **iRACEWEIGH™ SCALE APP**
- **MICROFLEX™ SCALE SYSTEM**
- **PRECISION HUB PLATE SCALE SYSTEM**
- **RFX™ WIRELESS WEIGHING TECHNOLOGY**
- **PC WIRELESS SCALE SYSTEM**
- **PERCENTWEIGH™** Weight Percentages Displayed in Hundredths
- **DIGITAL ADJUSTABLE VALVE SEAT FORCE TESTER**
- **BILLET FOUR PAD 20K SCALE SYSTEM**
- **LOW-PROFILE BILLET SCALE PAD**
- **BASELINE SETUP RECALL** of Weights & Percentages
- **2.5" (64MM) - 1,500LB (700KG) CAPACITY SCALE PAD**
- **INTEGRATED SCALE SYSTEM** with C/G Calculation & Printout
- **HIGH ACCURACY**
± 0.1% of Applied Load, or ±1 Graduation, Whichever is Greater
- **DIGITAL TURN PLATE**
- **DIGITAL CASTER/CAMBER GAUGE**
- **DIGITAL BUMP STEER GAUGE**
- **DIGITAL SHOCK PRESSURE GAUGE**
- **TIRE DRYING/PURGING SYSTEM**

CONTENTS

Scale System Technology	4
Billet Scale Systems	5-9
Microflex™ Scale Systems	10
Precision Hub Plate Scale Systems	11
Specialty Scale Systems	12
Billet Kart Scale Systems & Accessories	13,14
Alignment Equipment	15-17
Scale Racks, Levelers & Accessories	18,19
Engine Tools	20
Shock, Spring & Torque Testers	21
Pyrometers & Infrared Guns	22
Gauges & Durometers	23
Air Pressure Gauges	24, 25
Variable Speed Shock Dynamometers	26, 27
Test Equipment, Scale Accessories & Apparel	28-30
Terms & Conditions	31

Intercomp Company

3839 County Road 116
Medina, Minnesota 55340 USA

Toll Free: 800-328-3336 USA

Phone: +1 763-476-2531 Worldwide

Fax: +1 763-476-2613 Worldwide

E-mail: highperf@intercompcompany.com

Customer Service: 800-651-3174

customerservice@intercompcompany.com

SCALE SYSTEM TECHNOLOGY

YOUR ONLY CHOICE FOR ALL OF YOUR WIRELESS WEIGHING NEEDS!

**WORLD'S
STRONGEST
BILLET PADS:**

**6061-T6 AIRCRAFT-
GRADE ALUMINUM**



**2X
STRONGER**

than Liquid Metal Cast Pads!



Intercomp's industry-leading, field-proven, RFX™ Wireless Weighing Technology is the most advanced wireless weighing technology of its kind and has been used by champions in all forms of motorsport.

Intercomp manufactures the industry's first billet 2.5" (64mm) low-profile scale pad with 1,500lb (700kg) pad capacity. All Intercomp scale pads are manufactured from billet aluminum, on high-precision CNC machining and turning centers, to maintain the tightest tolerances and finest product finish available.

All Intercomp load cells and scale systems are tested and calibrated to the regulations set forth by the National Institute of Standards and Technology. These regulations include: temperature range, accuracy, repeatability, humidity, R.F.I./E.M.I. interference and permanence. Accuracy is $\pm 0.1\%$ of applied load, or ± 1 graduation, whichever is greater on every scale system.

TECHNICAL SPECIFICATIONS:

Accuracy: $\pm 0.1\%$ of Applied Load
OR ± 1 Graduation,
Whichever is Greater

Calibration: Keypad

Units: lb (kg)

Ambient:

Humidity: 10 to 95% Non-condensing
Temperature:

Operating 14°F to 130° F
(-10°C to 54°C)



100%

of teams in the NASCAR Monster Energy Cup Series,
Xfinity Series & Camping World Truck Series are
inspected with an INTERCOMP Scale System



OFFICIAL TECH SCALES FOR: Advantage RV's Modified Tour, All Star Circuit of Champions, ARCA, ARCA Midwest Tour, ARCA Truck Series, Corn Belt Clash, Dakota Classic Modified Tour, DIRTcar, IMCA, Mid-American Stock Car Series, Ultimate Street Car Association, US Legend Cars International, US Touring Car Championship, USMTS, Pirelli World Challenge, WISSOTA, World of Outlaws Late Models, World of Outlaws Sprint Cars, World Karting Association, World Racing League and Team USA Bobsled & Skeleton Team (USABS).

SW777RFX™ PROFESSIONAL WIRELESS SCALE SYSTEM



YOUR COMPLETE, ALL-IN-ONE, SCALE SYSTEM



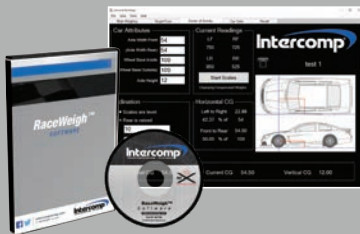
JOE GIBBS RACING | NASCAR
Toyota trademarks used with permission.
© 2017 Joe Gibbs Racing, Inc.

SYSTEM INCLUDES:

- 15" x 15" x 2.5" (381 x 381 x 64mm) Wireless RFX™ Billet Pads
- One-Touch Wireless Indicator with Rechargeable Batteries, Battery Charger & Case
- RaceWeigh™ Software & Wireless Node
- Pad Storage Case
- USB Cable for PC
- Two AA Alkaline Batteries Per Scale Pad
- 2-Year Warranty

INCLUDES:

RACEWEIGH™ SOFTWARE & WIRELESS NODE!



Please see page 8 for software details.

COMPLETE SCALE SYSTEM

- Fully-Integrated RFX™ Wireless Weighing Technology
- Encryption Ensures Secure Wireless Communication
- **USB & RS232 Output**
- Certified Accuracy of $\pm 0.1\%$ of Applied Load, or ± 1 Graduation, Whichever is Greater
- 1,500lb (700kg) Pad Capacity
- 6,000lb (2,800kg) System Capacity
- Weights Displayed on RFX™ Indicator & in RaceWeigh™ Software Simultaneously
- PERCENTWEIGH™ Weight Percentages Displayed in Hundredths
- **Stores 100 Chassis Setups**
- Baseline Setup Recall
- **Center of Gravity Calculation**
- User-Selectable Display Modes
- **Target Tune Feature**
- Giant 0.5", Backlit, Display Characters
- View ANY Combination of Scale Pad Weight & Percentage
- 400hr Average Battery Life in Pads

Part # 170127-WPC

CUSTOM SCREENS

<p>Oval Track</p>	<p>Monster Cup/Xfinity</p>	<p>Road Racing</p>	<p>Dirt Track w/REAR BITE</p>
<p>Drag/Rally</p>	<p>All Weights & Percentages Displayed On One Screen!</p>	<p>Total Display</p>	<p>Total Weight</p>



SW650RFX™ QUIK WEIGH™ WIRELESS SCALE SYSTEM

**TOP-SELLING
WIRELESS
SCALE SYSTEM**



SYSTEM INCLUDES:

- 15" x 15" x 2.5" (381 x 381 x 64mm) Wireless RFX™ Billet Pads
- One-Touch Wireless Indicator with Rechargeable Batteries, Battery Charger & Case
- Two AA Alkaline Batteries Per Scale Pad
- 2-Year Warranty

UPGRADE TO PC

Part # 170179-PC

**RACEWEIGH™ SOFTWARE
& WIRELESS NODE!**



Please see page 8 for software details.

COMPLETE SCALE SYSTEM

- Fully-Integrated RFX™ Wireless Weighing Technology
- Encryption Ensures Secure Wireless Communication
- **USB & RS232 Output**
- Certified Accuracy of $\pm 0.1\%$ of Applied Load, or ± 1 Graduation, Whichever is Greater
- 1,500lb (700kg) Pad Capacity
- 6,000lb (2,800kg) System Capacity
- **PERCENTWEIGH™** Weight Percentages Displayed in Hundredths
- **Stores 100 Chassis Setups**
- Baseline Setup Recall
- **Center of Gravity Calculation**
- User-Selectable Display Modes
- **Target Tune Feature**
- Giant 0.5", Backlit, Display Characters
- View ANY Combination of Scale Pad Weight & Percentage
- 400hr Average Battery Life in Pads

Part # 170126-W

CUSTOM SCREENS

<p>750 725 16 950 525 A LEFT 57.63% C 56.78% REAR 50.00% 2950</p> <p>Oval Track</p>	<p>750 725 16 950 525 A RIGHT 1250 CR 56.78% FRONT 50.00% 2950</p> <p>Monster Cup/Xfinity</p>	<p>750 725 950 ← 525 A SELECT: 1675 56.78% TOTAL: 2950 lbs</p> <p>Road Racing</p>	<p>LEFT 1700 57.63% REAR 1475 50.00% CROSS 1675 56.78% REAR BITE 425 A</p> <p>Dirt Track w/REAR BITE</p>
<p>750 725 16 950 525 A FRONT 50.00% REAR 50.00% 2950</p> <p>Drag/Rally</p>	<p>LF 750F 50.00F 725 LS 57.64 56.88S 42.4 LR 950R 50.00R 525 TOTAL: 2950 lbs</p> <p>All Weights & Percentages Displayed On One Screen!</p>	<p>750 725 TOTAL: 2950 lbs 950 525</p> <p>Total Display</p>	<p>TOTAL: 2950 lbs</p> <p>Total Weight</p>



MIKE STEARNS

SW500™ E-Z WEIGH™ CABLED SCALE SYSTEM



USB/RS232 Output

**HIGH QUALITY,
AMERICAN MADE,
CABLED SYSTEM**



JOE GIBBS RACING | NASCAR
Toyota trademarks used with permission.
© 2017 Joe Gibbs Racing, Inc.

SYSTEM INCLUDES:

- 15" x 15" x 2.5" (381 x 381 x 64mm) Billet Scale Pads
- Cabled Indicator with Case
- Standard 9-Volt Battery
- 2-Year Warranty



COMPLETE SCALE SYSTEM

- 1,500lb (700kg) Pad Capacity
- 6,000lb (2,800kg) System Capacity
- **USB & RS232 Output**
- Certified Accuracy of $\pm 0.1\%$ of Applied Load, or ± 1 Graduation, Whichever is Greater
- PERCENTWEIGH™ Weight Percentages Displayed in Hundredths
- **Stores 100 Chassis Setups**
- Baseline Setup Recall
- **Center of Gravity Calculation**
- User-Selectable Display Modes
- **Target Tune Feature**

Part # 170125

SW500™ E-Z WEIGH DELUXE™ CABLED SCALE SYSTEM

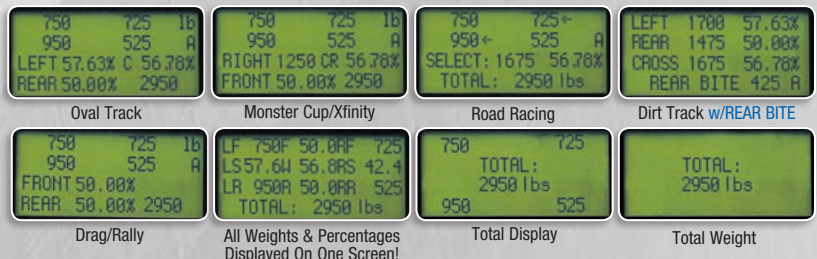
DELUXE SYSTEM INCLUDES:

- Cabled Indicator with Case
- 15" x 15" x 2.5" (381 x 381 x 64mm) Billet Scale Pads
- Interface Cable
- Pad Case
- Standard 9-Volt Battery
- 2-Year Warranty



Part # 170124

CUSTOM SCREENS



BILLET SCALE SYSTEMS

SW787RFX™ PC WIRELESS SCALE SYSTEM

**WIRELESSLY
VIEW & RECORD
SCALE DATA
ON YOUR PC!**



Main View Screen (shown) (PC not Included)

Intercomp's PC Wireless Scale Systems combine our ultra-accurate Billet Scale Pads with Intercomp's tested & proven advanced RFX™ Wireless Weighing Technology. Systems use Intercomp's RaceWeigh™ Software & four Billet Scale Pads with integrated RFX™ Wireless Weighing Technology to transmit data from the scale pads to a PC. Software compatible with: Windows® 7, Windows® 8 & Windows® 10.

SYSTEM INCLUDES:

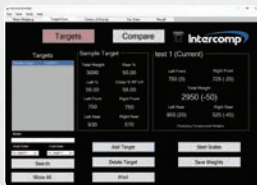
- 15" x 15" x 2.5" (381 x 381 x 64mm) Wireless RFX™ Billet Pads
- RaceWeigh™ Software & Wireless Node
- Two AA Alkaline Batteries Per Scale Pad
- 2-Year Warranty

COMPLETE SCALE SYSTEM

- Fully-Integrated RFX™ Wireless Weighing Technology
- Encryption Ensures Secure Wireless Communication
- Certified Accuracy of ± 0.1% of Applied Load, or ±1 Graduation, Whichever is Greater
- 1,500lb (700kg) Pad Capacity
- 6,000lb (2,800kg) System Capacity
- PERCENTWEIGH™ Weight Percentages Displayed in Hundredths
- Updated RaceWeigh Software includes Space to Save Chassis Setup Notes
- [Store & Recall Chassis Setups, Export to Excel®](#)
- Baseline Setup Recall
- [Center of Gravity Calculation](#)
- User-Selectable Display Modes
- [Target Tune Feature](#)
- View ANY Combination of Scale Pad Weight & Percentage
- 400hr Average Battery Life in Pads

Part # 170154-PC

**MORE PC SCALE SYSTEMS AVAILABLE
ONLINE AT INTERCOMPRACING.COM**



Target Tune Screen



Center of Gravity Screen

MAIN SCREEN SHOWS:

- Oval Track
- Monster Energy/Xfinity
- Kart
- Road Racing
- Dirt Track w/REAR BITE
- Drag/Rally
- 4 Corners

SW656™ iRACEWEIGH™ WIRELESS SCALE SYSTEM



**VIEW & RECORD
SETUPS ON
YOUR PHONE
OR TABLET!**

Smartphone, Tablet or Other Com-
patible Device Not Included



The iRaceWeigh™ Wireless Scale System is the most convenient way for scaling your car using an iPhone®, iPad®, iPod® touch or any smartphone or tablet for Android™.

The iRaceWeigh™ Module communicates with your Intercomp scales through Fully-Integrated RFX™ Wireless Weighing Technology, providing you with complete control over your scales, including the ability to zero them, change units, save weights and send reports via email for future analysis.

SYSTEM INCLUDES:

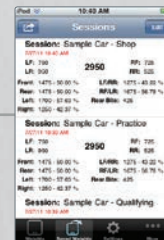
- 15" x 15" x 2.5" (381 x 381 x 64mm) Wireless RFX™ Billet Pads
- iRaceWeigh™ Module
- Two AA Alkaline Batteries Per Scale Pad
- 2-Year Warranty

COMPLETE SCALE SYSTEM

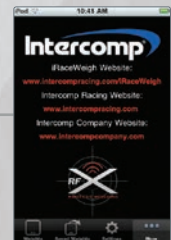
- Fully-Integrated RFX™ Wireless Weighing Technology
- **FREE iRaceWeigh™ App Available on the App Store & Google Play™**
- Encryption Ensures Secure Wireless Communication
- Certified Accuracy of $\pm 0.1\%$ of Applied Load, or ± 1 Graduation, Whichever is Greater
- View & Save Live Weights
- **Email Saved Reports**
- **Zero Scales & Change Units Right from Your Device**
- 1,500lb (700kg) Pad Capacity
- 6,000lb (2,800kg) System Capacity
- 400hr Average Battery Life in Pads

Part # 170306

- View & Save Weights
- Export All Data to a Spreadsheet for Future Analysis
- Send Saved Reports via Email



Saved Weights



Information

MAIN SCREEN SHOWS:

- Front Total & Percent
- Rear Total & Percent
- Left Total & Percent
- Right Total & Percent
- Cross LF/RR Total & Percent
- Cross RF/LR Total & Percent
- Rear Bite



iRACEWEIGH™ MODULE

CABLED SCALE SYSTEM

Part# 170250



Can be Ordered Separately.
Compatible with All
Intercomp RFX™ Wireless
& Cabled Scales with
RS232 Output.

MICROFLEX™ PRECISION FOUR LOAD CELL SCALE SYSTEMS

**GET EXTREME
PRECISION & ULTRA-
LOW DEFLECTION
WITH FOUR LOAD CELLS
PER PAD!**



- Four Load Cells per Scale Pad
- Ultra-Low Deflection Scale Pads
- Highest Level Accuracy, Repeatability & Stability for Consistent Chassis Setup
- Fully-Integrated RFX™ Wireless Weighing Technology
- Encryption Ensures Secure Wireless Communication
- USB & RS232 Output
- Weights Displayed on RFX™ Indicator & in RaceWeigh™ Software Simultaneously
- PERCENTWEIGH™ Weight Percentages Displayed in Hundredths
- Stores 100 Chassis Setups
- Baseline Setup Recall
- Center of Gravity Calculation
- User-Selectable Display Modes
- Target Tune Feature
- View Any Combination of Scale Pad Weight & Percentage
- 400hr Average Battery Life in Pads

COMPLETE SCALE SYSTEM

- 2,200lb & 4,000lb (1,000kg & 1,800kg) Pad Capacities
- 8,800lb & 16,000lb (4,000kg & 7,300kg) System Capacities

SYSTEM INCLUDES:

- 15" x 15" x 2.5" (381 x 381 x 64mm) Microflex™ Billet Pads
- One-Touch Wireless Indicator with Rechargeable Batteries, Battery Charger & Case
- RaceWeigh™ Software & Wireless Node
- Two AA Alkaline Batteries Per Scale Pad
- 2-Year Warranty

Part # 170201 8,800lb (4,000kg) System Capacity

Part # 170252 16,000lb (7,300kg) System Capacity



Target Tune Screen



Center of Gravity Screen



Main View Screen (shown)
(PC not included)

CUSTOM SCREENS:

- Oval Track
- Monster Energy/Xfinity
- Kart
- Road Racing
- Dirt Track w/REAR BITE
- Drag/Rally
- 4 Corners



JOE GIBBS RACING WINS ON INTERCOMP MICROFLEX™ SCALES!

JOE GIBBS RACING | NASCAR
Toyota trademarks used with permission. © 2017 Joe Gibbs Racing, Inc.

PRECISION HUB PLATE SCALE SYSTEM



NOW
BALL TRANSFER BEARING TECHNOLOGY FOR 360° ROTATION

RaceWeigh™ Software Included

- 1,500lb (700kg) Corner Capacity
- 6,000lb (2,800kg) System Capacity
- Fully-Integrated RFX™ Wireless Weighing Technology
- Encryption Ensures Secure Wireless Communication
- USB & RS232 Output
- Weights Displayed on RFX™ Indicator & in RaceWeigh™ Software Simultaneously
- PERCENTWEIGH™ Weight Percentages Displayed in Hundredths
- RaceWeigh™ Software includes Hub Compensation Calculations
- Stores 100 Chassis Setups
- Baseline Setup Recall
- Center of Gravity Calculation
- User-Selectable Display Modes
- Target Tune Feature
- View ANY Combination of Scale Weight & Percentage

OPTIONS & ACCESSORIES:

- Part # 170229 System Case (Set of Two)
- Part # 170231 Hardened Base/Stops
- Part # 171006 Triangle Leveler
- Part # 170209 Rulers
- Part # 100005 Digital Caster Camber Gauge w/Magnetic Adapter

COMPLETE SCALE SYSTEM (SET OF 4) PATENT PENDING

- Industry's First Vehicle Alignment System with Self-Contained Wireless Scale System
- Simulates Loaded Tire Weight & Diameter with a 2.88" (73mm) Adjustment Range in 1/24" or 1mm Increments
- Eliminates Tire Pressure, Weight & Size Variations
- Provides Easy Access to Suspension Adjustments
- Ball Transfer Bearings Increase Durability & Allows the Hub Plate System to Move up to 360° to Settle without Binding
- Adjustable Toe Stance from 18" to 26" (460 to 610mm)
- Adjustable Toe Rulers Measure Relative to Hub Face in 1/16" or 1mm Increments
- Vertical Adjustable Rulers Allow Measurement of Camber (inches/mm)
- Steel Insert Accommodates Intercomp's Magnetic Caster/Camber Gauge Adapter
- Reflective Stickers Increase Laser Visibility

Optional Adaptors: (Set of Four)

HUB ADAPTERS

- Part # 170214 Porsche 5 x 130mm (Porsche Cup)
- Part # 170215 Riley Center Lock
- Part # 170216 RSR Center Lock
- Part # 170217 5 x 5
- Part # 179001 Ferrari
- Part # 170218 Viper 6 x 4.5
- Part # 170300 Blank 6 Piston Caliper
- Part # 170219 Blank

Part # 170310 RFX™ Low-Profile Precision Hub Plate Scale System
 Tire Diameter 21" to 26" (533 to 660mm)

Part # 170311 RFX™ Precision Hub Plate Scale System
 Tire Diameter 23" to 30" (584 to 762mm)

PRECISION HUB PLATE SYSTEM (SET OF 4) PATENT PENDING

Part # 170212 RFX™ Low-Profile Precision Hub Plate System
 Tire Diameter 21" to 26" (533 to 660mm)

Part # 170213 RFX™ Precision Hub Plate System
 Tire Diameter 23" to 30" (584 to 762mm)



Includes: Wireless Handheld Weighing Indicator & RaceWeigh™ Software with Hub Compensation Calculations for PC (PC not included). See page 8 for details.

SPECIALTY SCALE SYSTEMS

SW888™ WIRELESS SCALE SYSTEM

SCALE SYSTEMS THAT FIT YOUR NEEDS



Upgrade to PC
 Part # 170179-PC
 RaceWeigh™ Software & Wireless Node!

Please see page 8 for software details.

SYSTEM INCLUDES:

- 15" x 15" x 2.5" (381 x 381 x 64mm) Heavy Duty Aircraft-Style Wireless RFX™ Limited Edition Pads
- One-Touch Wireless Indicator with Rechargeable Batteries, Battery Charger & Case
- Two AA Alkaline Batteries Per Scale Pad
- 2-Year Warranty



COMPLETE SCALE SYSTEM

- Fully-Integrated RFX™ Wireless Weighing Technology
- Encryption Ensures Secure Wireless Communication
- **USB & RS232 Output**
- Certified Accuracy of ± 0.1% of Applied Load, or ± 1 Graduation, Whichever is Greater
- 1,500lb (700kg) Pad Capacity
- 6,000lb (2,800kg) System Capacity
- Heavy-duty Pad results in Low Deflection
- PERCENTWEIGH™ Weight Percentages Displayed in Hundredths
- **Store & Recall Chassis Setups**
- Baseline Setup Recall
- **Center of Gravity Calculation**
- User-Selectable Display Modes
- **Target Tune Feature**
- Giant 0.5", Backlit, Display Characters
- View ANY Combination of Scale Pad Weight & Percentage
- 400hr Average Battery Life in Pads

More High Capacity Specialty Scale Systems available online at intercompracing.com

Part # 170182

SW™ MOTORCYCLE CABLED SCALE SYSTEM

SYSTEM INCLUDES:

- 15" x 15" x 2.5" (381 x 381 x 64mm) Billet Pads
- Cabled Indicator with Case
- Standard 9-Volt Battery
- 2-Year Warranty



COMPLETE SCALE SYSTEM

- 500lb (250kg) Pad Capacity
- 1,000lb (500kg) System Capacity
- **USB & RS232 Output**
- Certified Accuracy of ± 0.1% of Applied Load, or ± 1 Graduation, Whichever is Greater
- Dual Pad System
- Giant 0.5", Backlit, Display Characters
- Used by Most Professional Race Organizations
- **Displays Front & Rear Weights, Total Weight & Percentages**
- Readout in 0.5lb (0.2kg) Increments
- Heavy-Duty Cabling



Part # 100328

SW787RFX™ PC WIRELESS KART SCALE SYSTEM



Main View Screen (shown)
(PC not Included)



10" x 10" x 2"
Billet Pads are
Ideal for Karts,
Bandoleros
& Vehicles
under 1,600lbs

**SCALES MADE
WITH THE KART
RACER IN MIND**



SYSTEM INCLUDES:

- 10" x 10" x 2" (254 x 254 x 51mm) Wireless RFX™ Billet Pads
- RaceWeigh™ Software & Wireless Node
- Two AA Alkaline Batteries Per Scale Pad
- 2-Year Warranty



COMPLETE SCALE SYSTEM

- 1,500lb (700kg) Pad Capacity
- 6,000lb (2,800kg) System Capacity
- **USB & RS232 Output**
- Certified Accuracy of $\pm 0.1\%$ of Applied Load, or ± 1 Graduation, Whichever is Greater
- PERCENTWEIGH™ Weight Percentages Displayed in Hundredths
- **Stores 100 Chassis Setups**
- Baseline Setup Recall
- **Center of Gravity Calculation**
- User-Selectable Display Modes
- **Target Tune Feature**

Part # 170302

SW777RFX™ PROFESSIONAL KART WIRELESS SCALE SYSTEM

SYSTEM INCLUDES:

- 10" x 10" x 2" (254 x 254 x 51mm) Wireless RFX™ Billet Pads
- One-Touch Wireless Indicator with Rechargeable Batteries, Battery Charger & Case
- Two AA Alkaline Batteries Per Scale Pad
- 2-Year Warranty



COMPLETE SCALE SYSTEM

- Fully-Integrated RFX™ Wireless Weighing Technology
- Encryption Ensures Secure Wireless Communication
- **USB & RS232 Output**
- Certified Accuracy of $\pm 0.1\%$ of Applied Load, or ± 1 Graduation, Whichever is Greater
- 400lb (200kg) Pad Capacity
- 1,600lb (800kg) System Capacity
- **Stores 100 Chassis Setups**
- Baseline Setup Recall
- User-Selectable Display Modes
- **Target Tune Feature**
- View ANY Combination of Scale Pad Weight & Percentage
- 400hr Average Battery Life in Pads



Part # 170183



SW500™ E-Z WEIGH KART CABLED SCALE SYSTEM

Part # 170130

KART ACCESSORIES

BILLET KART BUBBLE CAMBER-ONLY GAUGE

- CNC-Machined Billet Aluminum Construction
- Easy-to-Read Bubble Display
- Measures $\pm 6^\circ$ of Camber

Part # 102136 w/Case & Magnetic Adapter

Part # 102137 w/Case & 5/8" Kart Adapter

Part # 102138 w/Case (No Adapter)



1/8° Increments

BILLET KART BUBBLE CASTER/CAMBER GAUGE

- CNC-Machined Billet Aluminum Construction
- Easy-to-Read Bubble Display
- Measures $\pm 6^\circ$ of Camber & $\pm 8^\circ$ of Caster

Part # 102040 w/Case & 5/8" Adapter

Part # 102041 w/Case & 14/17mm Adapter

BOLT-ON KART CHASSIS ALIGNMENT SYSTEM

- Complete, Four-Plate, Bolt-On Alignment System
- Compatible with Standard Hubs:
U.S. - 3 on 2.5" bolt circle (1/4 & 5/16 stud)
International - 3 on 58mm & 3 on 67mm bolt circle

Part # 100677



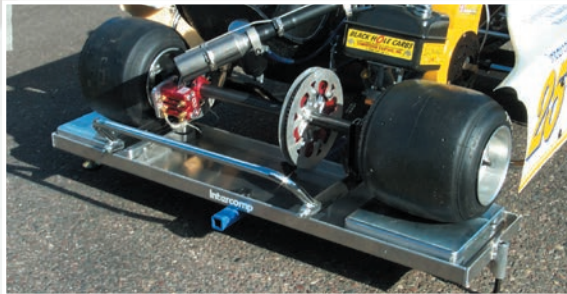
KART TIRE TESTER

- Dial in Tire Spring Rates to Optimize Handling
- Digital Travel & Force Indication
- Force Capacity: 250lb (125kg)
- Backlit for Night Use

Part # 100452

Part # 100345 (Auto)

- 2,500lb (1134kg) Capacity
- Platform: 12.5" x 12.5" (318 x 318mm)



Competition Karting

KART SET-UP RACK

- 400lb (200kg) Capacity
- Establishes a Level Set-Up Area on Virtually any Surface
- Accommodates all 8" (203mm) & 10" (254mm) Scale Pads
- Handles Most Any Wheel Base & Track Width
- Constructed of High-Strength Aluminum
- Assembles Quickly
- Compact for Easy Storage

Part # 102035 Oval Kart Set-Up Rack

Dimensions: 54.75" x 45" (1,390 x 1,145mm)

Part # 102002 Shifter Kart Set-Up Rack

Double Bar Support

Dimensions: 54.75" x 57" (1,390 x 1,450mm)

MORE KARTING TOOLS & ACCESSORIES AVAILABLE ONLINE AT INTERCOMPRACING.COM



0.1° Increments, 2,000lb (1,000kg) Capacity

**TURN PLATES
— ULTRA-LOW
DEFLECTION
DO NOT
IMPAIR
CASTER OR
CAMBER**



0.5° Increments, 2,000lb (1,000kg) Capacity

DIGITAL TURN PLATE

PATENT PENDING

- Measure Wheel Angle with the Industry's First Digital Turn Plate
- Multiple Direction X & Y Movement
- High-Strength Bearings
- Large, Easy-to-Read, Electronic Display
- 0.1° Graduation
- Range of $\pm 30^\circ$ (60° Total)
- Lightweight Aluminum Construction
- Take Several Easy Measurements to be Used for Alignment Including Caster/Camber & Ackerman
- Can be Placed on Top of Scale Pads
- Standard 9-Volt Battery Operation

Dimensions: 13" x 15" x 1.625" (330 x 380 x 41mm)

Part # 102191 (Set of Two)

MECHANICAL TURN PLATE

PATENT PENDING

- Same Construction as Intercomp's Premier Digital Turn Plate
- Multiple Direction X & Y Movement
- Utilizes Precise CNC Machined Numbers
- Range of $\pm 35^\circ$ (70° Total)
- Can be Zeroed with Car in Place

Dimensions: 13" x 15" x 1.625" (330 x 380 x 41mm)

Part # 102007 (Set of Two)

REAR WHEEL SPACER

- Maintain Proper Weight Distribution by Keeping the Rear Level with the Front Plates
- Constructed from Lightweight, Aerospace-Grade Aluminum

Dimensions: 13" x 15" x 1.625" (330 x 380 x 41mm)

Part # 100339-09 (Set of Two)

JOE GIBBS RACING | NASCAR



Toyota trademarks used with permission. © 2017 Joe Gibbs Racing, Inc.

ALIGNMENT EQUIPMENT

**INDUSTRY'S ONLY FULLY-DIGITAL
CASTER/CAMBER GAUGE**

Features Selectable 15° or 20° Caster/Camber Reading



Shown with magnetic adapter

- Indicates to 1/10° & has a ±20° Caster/Camber Reading
- Selectable 15° or 20° Caster/Camber Reading
- Up To 10 Times Greater Accuracy than Traditional Bubble Gauges
- Standard 9-Volt Battery Gives up to 100 Hours of Operation
- Lightweight, Aluminum Design, with Auto Shut-Off & Backlight
- Inclinator Mode for Pinion & Strut Angles
- Built-in Diagnostic Mode for Resetting Camber Zero

Part # 100005 w/Case & Magnetic Adapter

Part # 100008 w/Case (No Adapter)

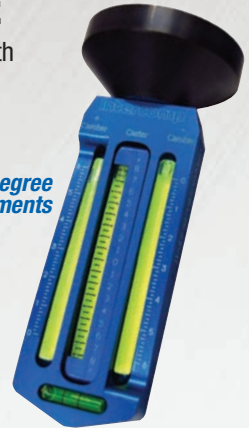
Part # 102046 w/Case & Wide-5 Adapter

Part # 100793 w/Case & NASCAR Adapter

**INDUSTRY'S HIGHEST ACCURACY
BILLET BUBBLE
CASTER/CAMBER GAUGE**

Billet CNC-machined aluminum housing with easy-to-read bubble display. Measures ±6° of camber & ±8° of caster.

Shown with magnetic adapter



1/8 Degree
Camber Increments

Part # 102010 w/Case & Magnetic Adapter

Part # 102011 w/Case (No Adapter)

Part # 102042 w/Case & Wide-5 Adapter

Part # 102043 w/Case & GM Adapter

RIM CLAMP

- Commercial-Grade Clamp
- Fits Most Any Size Wheel
- Rugged Design Guarantees a Secure Fit
- Use with our Digital or Bubble Caster/Camber Gauge with Magnetic Adapter
- Perfect for Repair Shops & Sports Cars with Expensive Aluminum Wheels



CC Gauge
Not Included

Part # 100007 For Wheels 13"(330mm) / 18"(457mm)

Part # 100009 For Wheels 16"(406mm) / 25"(535mm)

CASTER/CAMBER GAUGE ADAPTERS*



Spindle Adapter

* Can be used with most brands of C/C Gauges.

Part # 100006	Magnetic	3.5"OD - 1.55"ID
Part # 100000	GM	.750 - 20 UNEF
Part # 100001	Big Ford	.813 - 20 UNEF
Part # 100002	Wide-5	1.813 - 16 UN
Part # 102055	Wide-5 for Digital C/C Gauge	
Part # 100003	SCP	.844 - 20 UNF
Part # 100020	Small Ford	.750 - 16 UNF
Part # 100013	Toyota/Legends	19 mm - 1.5
Part # 100014	Kart - U.S.	.625 - 18 UNF
Part # 100189	Magnetic/NASCAR	2.25"OD - 1.55"ID
Part # 100794	Sprint Car	1.188 - 16 UNF
Part # 100456	Kart	.50 - 13 UNC
Part # 100457	Kart - Metric	14/17 mm - 1.5
Part # 100458	Blank	
Part # 179005	Anglia Spindle	11/16 - 24mm
Part # 100783	Kart Spindle Adapter	17mm/ 5/8"
Part # 100788	Kart Spindle Adapter	.625 - 18 UNF
Part # 100789	Kart Spindle Adapter	14/17 mm - 1.5
Part # 100869	Kart Spindle Adapter	16mm - 1.5
Part # 102074	Bandolero/Small Ford Spindle Adapter	.750 - 16 UNF

DIGITAL ANGLE GAUGE W/MAGNETIC BASE & SIDES



- Locate Angles Digitally
- Large LCD Display
- Magnetic Base & Sides
- Reads from 0° to 90° in 0.05° Increments
- Display Rotates 180°
- Backlit Display
- Internal Battery w/USB Charging Cable

Dimensions: 2.25" x 2.25" (57 x 57mm)

Part # 102144

DIGITAL BUMP STEER GAUGE

- Fully Digital Bump Steer Gauge
- Standard Hub Plate Works with Most 5-Bolt Patterns from 4.5" to 5" & Wide-5
- Anti-Slip "T" Base with Leveling Feet & Bubble Allows Use with a Car on a Jack
- Dual Digital Indicators for Improved Accuracy
- Can be Used with a Standard Floor Jack or Bottle Jack



Part # 102008 Digital Travel w/Standard Hub Plate

Part # 102014 Ruler Travel

OPTIONS:

Wide-5 Ruler Hub Plate (for Snap In-Style hubs) Part # 102087

Wide-5 Digital Hub Plate (for Snap In-Style hubs) Part # 102088

Blank Hub Plate Part # 102019

LEGENDS CAR Hub Plate Part # 102029

Viper Hub Plate Part # 102032

"DUNLOP STYLE" WHEEL ADAPTER

- Heavy-Duty Construction
- Fits Most Any Size Wheels from 5" to 24" (127 to 610mm) diameters
- Perfect to use with Intercomp's Digital or Bubble Caster/Camber Gauges or Digital Angle Finder
- Ideal Tool for Any Competitive Motorsport Setup Process
- Great Tool for Repair Shops or Expensive Aluminum Wheel Applications



Part # 360202 w/Angle Gauge

Part # 360201 Wheel Adapter Only

TOE PLATES

- Quickly & Accurately Measure Toe
- High-Strength, Lightweight Aluminum Plates
- Includes Two Measuring Tapes

Dimensions: 27.5" x 11" (698 x 279mm)

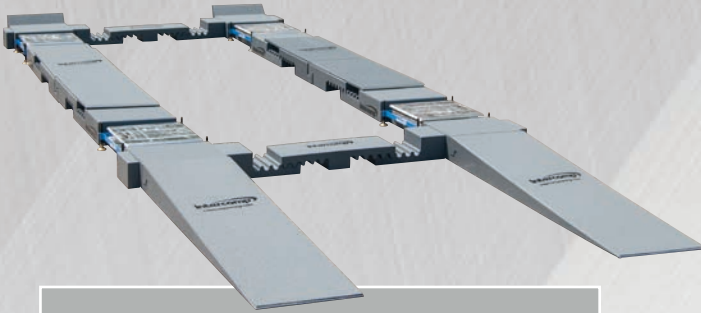


Part # 102009 (Set of Two)



SCALE RACKS

**LIGHTWEIGHT, MODULAR, ADJUSTABLE
QUIK RACK SCALE RACK**



Precision machined out of super-dense foam, this lightweight, easy-to-transport, rack system includes ramps, adjustable pontoons and bridges, and front roll-offs.

Part # 171000 Rack Only, (Levelers not Included)

Part # 171001 Includes Levelers

- 6,000lb (2,800kg) System Capacity
- Up/Down Ramps Measure: 57" x 16" x 5" (1,448 x 406 x 127mm)
- Bridges Measure: 16" W x 5" H (406 x 127mm)
- Made to Work with 2.5" (64mm)-Profile Scales
- Lightweight Construction Means Easy Transport for a Full Rack Setup Anywhere
- Lower-cost Alternative to Metal Racks
- Textured Exoskeleton Provides Extra Strength, Won't Slip or Slide & Won't Scratch or Mark up Floors
- Movable Ramps Create Flexible Loading & Unloading of Vehicles
- Wheelbase Adjustable from 84" to 110" (2,133 to 2,794mm)
- Track Width Adjustable from 49.5" to 64" (1,257 to 1,625mm)
- Roll-off Area Measures: 16" W x 12" L (406 x 305mm)
- Approach Angle: 4.6°
- Assembled Weight: 171000 - 144lbs (65kg)
171001 - 182lbs (83kg)
- Optional Additional Down Ramps Enable "Drive-Over" Capability

Part # 171004 (Set of Two)



**BILLET, ADJUSTABLE, DRIVE-ON
PROFESSIONAL SCALE RACK**

- 4,000lb (2,000kg) System Capacity
- 8" (203mm) Ramps & Bridges
- Ultra-Low Deflection Scale Pad Pockets at Max Capacity
- Honeycomb Filled Center for a Lightweight Pontoon Cover
- Billet Track Width Mounts Adjustable in 2.5" (64mm) Increments
- Solid 6' (1,828mm) Design that Sets Up Fast & Easy
- 26 Adjustable Steel Feet Standard for Increased Stability
- Wheelbase Adjustable from 90" to 120" (2,286 to 3,048mm)
- Track Width Adjustable from 52" to 66" (1,321 to 1,676mm)
- Roll-Off Length: 18" (457mm)
- Pocket Dimensions: 22" x 15.25" (559 x 387mm)
- Assembled weight: 101024 - 354lbs (160 kg)
- Also available with Integrated Microflex™ Scales, with Four Load Cell Design

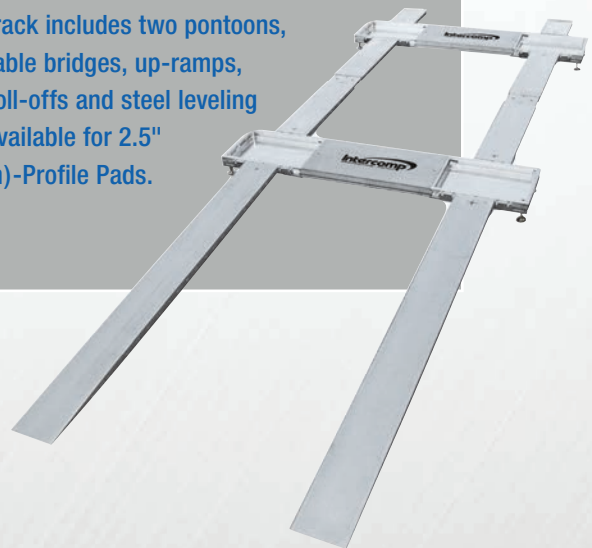
Part # 102017

Part # 102024 15" x 2.5" (381 x 64mm) Pads

Part # 102027 Down Ramps for Scale Rack (Set of Two)

PROFESSIONAL GRADE SCALE RACK MANUFACTURED FROM 6061-T6 BILLET ALUMINUM

Basic rack includes two pontoons, adjustable bridges, up-ramps, front roll-offs and steel leveling feet. Available for 2.5" (64mm)-Profile Pads.



BILLET LEVELER WITH ROLL-OFF PAD

- For any 15" x 15" (381 x 381mm) Scale Pad with a 2.5" (64mm) or 4" (100mm) Profile
- 6061-T6 Billet Aluminum Construction
- Leveling Feet Provide up to 2" (50mm) of Vertical Adjustability
- Enables Car to be Rolled On & Off the Scale Pad with Little Effort
- Rigid Design for Ultra-Low Deflection

Dimensions: 32" x 16" (813 x 406mm)

Part # 170178 (Set of Four) for 2.5" profile pads

Part # 170173 (Set of Four) for 4" profile pads



See Page 10 for Microflex™ Scale Options

SCALE PAD LEVELER WITH ROLL-OFF PAD (ONE-PIECE)

- Designed to Fit Any 15" (381mm) Scale Pad with 2.5" (64mm) or 4" (100mm) Pad Thickness
- Leveling Feet Provide up to 2" (50mm) of Vertical Adjustability
- Enables Car to be Rolled On & Off the Scale Pad with Little Effort
- Aluminum Construction

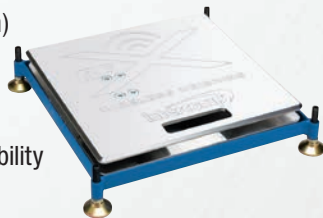
Dimensions: 31" x 15.5" (787 x 395mm)

Part # 170133 (Set of Four) for 2.5" profile pads



SCALE PAD LEVELER

- For any 15" x 15" (381 x 381mm) Scale Pad with a 2.5" (64mm) or 4" (100mm) Profile
- Leveling Feet Provide up to 2" (50mm) of Vertical Adjustability
- High-Quality Steel Construction with a Powder Coat Finish



Dimensions: 15.5" x 15.5" (395 x 395 mm)

Part # 100344 (Set of Four)

SCALE RAMPS

- 14" L x 2.5" H x 12" W (360 x 64 x 305mm)
- 7.8° Incline
- Solid Construction, Supports up to a 6,000lb (2,800kg) Vehicle
- Textured Exoskeleton Provides Extra Strength & Prevents Slipping



Part # 171002 (Set of Four) for 2.5" profile pads

LASER LEVELING SYSTEM FOR SCALE PADS



- Level Pads, Roll-Offs or Setup Racks
- Laser Sighting with a Virtually Unlimited Range
- Use with All Scale Systems, Roll-Offs & Racks
- Includes Case & Laser-Enhancing Glasses



Part # 171007

CLASS 1 LASER PRODUCT
THIS PRODUCT COMPLIES WITH IEC 60825-1:2015-05 Ed.3.0
THIS PRODUCT COMPLIES WITH 21CFR SUBCHAPTER J PARTS 1040.10 AND 1040.00 EXCEPT FOR DEVIATIONS PURSUANT TO LASER NO. 50 DATED JUNE 24, 2007.

SCALE RAMPS W/ROLL-OFF

- 30" L x 2.5" H x 12" W (762 x 64 x 305mm)
- 7.8° Incline
- 12" (305mm) Roll-Off Area
- Solid Construction, Supports up to a 6,000lb (2,800kg) Vehicle
- Textured Exoskeleton Provides Extra Strength & Prevents Slipping



Part # 171005 (Set of Four) for 2.5" profile pads

ENGINE TOOLS

ADJUSTABLE VALVE SEAT FORCE TESTER

- First Fully-Adjustable Digital VSFT for Rocker Length & Offset
- Infinite Adjustment & Peak Hold for Hard-to-Read Areas
- Reads in Precision 5.0lb/kg Increments
- Brass Contact to Prevent Rocker Damage
- Fully-Anodized Billet Aluminum Components
- Comfort Grip T-Handle for Improved Accuracy & Ease of Use
- Extremely Lightweight
- Backlit for Night Use
- Standard 9-Volt Battery Operation

Accuracy: ± 0.25% of Reading

Capacity: 600lb (300kg)

Adjustable Length: 2.6" to 3.4" (66 to 86mm)



Part # 100760 Standard

Part # 100760-SH Semi Hemi

VALVE SPRING TESTER

- Portable Digital Force & Travel Indication
- Peak Hold Feature Saves Maximum Reading
- Excellent for Testing Valve & Clutch Spring Pressure
- Measures Relief Springs up to 2" (50mm) in Diameter
- Readout in 0.2lb (kg) Increments
- Backlit for Night Use
- Standard 9-Volt Battery Operation

Accuracy: ± 0.25% of Reading

Capacity: 1,000lb (500kg)

Travel: 4" (100mm)



Part # 100058

VALVE SEAT FORCE TESTER

- Precision 5.0lb/kg Increments
- Brass Contact to Prevent Rocker Damage
- Can be Used on Most Wedge Engines with Rocker Shafts & Aluminum Rockers
- Comfort Grip T-Handle for Improved Accuracy & Ease of Use
- Four Position Adjustment & Peak Hold for Hard to Read Areas
- Backlit for Night Use
- Standard 9-Volt Battery Operation

Accuracy: ±0.25% of Reading

Capacity: 500lb (250kg)

Length (Claw to Brass Contact): 2.6" (66mm)



Part # 100450

GREAT FOR CHECKING BUMP STOPS
ARBOR VALVE SPRING TESTER

- 1.0lb Increments from 0 to 1,500lbs (750kgs)
- Billet 6061-T6 Aluminum Construction
- Digital Travel & Force Readout
- 5" Travel Capacity
- 2" Diameter Spring Capacity
- Backlit for Night Use
- Two Adjustable Test Stops
- Peak Hold Feature Saves Maximum Reading
- Standard 9-Volt Battery Operation

Accuracy: ± 0.25% of Reading

Capacity: 1,500lb (750kg)



Bump Stop Adapters

Part # 110065 .500"

Part # 110066 .625"

Part # 110067 14mm

Part # 110068 15mm

Part # 110069 16mm

AIR DENSITY GAUGE

- Measures Air Density, Air Temperature & Barometric Pressure
- Allows Proper Engine Tuning to Ensure Optimum Performance
- Includes Case



Part # 360093

DIGITAL COMBINATION LEAK DOWN/COMPRESSION TESTER

- Repeatable Accuracy for Engine Cylinder & Fuel Injector/Barrel Valve Leak Percentages
- Reads to 400PSI
- Locking Regulator Allows Incoming Air Pressure Adjustment
- Intake Air Pressure & Hose Length will Not Affect Readings (Must have 90PSI Input Pressure)
- Meets FAA Standards for Leak Down Testing Engines up to 5.00-Inch Bore
- Optional Hoses Available
- Includes Case

System Includes:

- 14mm Leak Down Hose
- 14mm Compression Hose

Part # 170134



Compression Mode



Leak Down Mode



RECOMMENDED BY LEADING SPRING MANUFACTURERS

DIGITAL COIL SPRING TESTER

- Portable, Digital Force with Travel Indication
- Large 0.5" (13mm) Display
- Knurled Pressure Relief Knob
- Peak Hold Feature
- Quick, Single-Pin Vertical Adjustment
- Handles Flat/Coil-Over Springs up to 6" (150mm) in Diameter & 18" (457mm) High
- Standard 9-Volt Battery Operation

Accuracy ±0.25% of Applied Load
Travel: 4" (100mm)

Part # 100061 2,000lb (1,000kg) Capacity

Part # 100059 5,000lb (2,500kg) Capacity



DESIGNED TO WORK WITH INTERCOMP'S
DIGITAL COIL SPRING TESTER

FORK SPRING TESTER RETROFIT KIT

- Quick & Easy Retrofit from Coil Spring to Fork Tester
- Handles Up to 2" (48mm) Diameter & 36" (914mm) Long Fork Springs
- Readout in 0.1lb (0.05kg) Increments
- Standard 9-Volt Battery Operation

Accuracy: ± 0.25%
Capacity: 200lb (100kg)



Part # 100062

DIGITAL TORQUE WRENCH TESTER

- Peak Hold Feature Saves Maximum Reading
- Push-Button Conversion from lb-ft to lb-in & Nm
- Accommodates 0.5" Drive Torque Wrenches
- Standard 9-Volt Battery Operation

Accuracy: ± 0.25% of Reading
Range: 0 to 200lb-ft/ 0 to 2,400lb-in/ 0 to 271Nm

Part # 102028



RECOMMENDED BY LEADING SPRING MANUFACTURERS

DIGITAL COIL-OVER SPRING TESTER & COMPRESSOR

- Rates Standard Coil Springs 2.5" (64mm) to 6" (152mm) Diameter
- Rates Coil-Over Setups
- Compress Coil-Over Assemblies for Easy Adjustments
- Adjust Coil-Overs without Disassembling Shock & Spring
- Includes Spring Cup Removal Plate
- 31" (787mm) Eye-to-Eye
- 10 5/8" (270mm) Jack Travel with 12" (305mm) Digital Travel Indicator
- Rate Bump Stops & Determine Coil Bind & Rod Pressures
- Easy-to-Use Handles Make Adjustments without Tools
- 0.5" Diameter, 2.5" Long Shock Mounting Pins Shock Mounting Collar 0.676" Wide, 1.5" Deep
- Compact Design Maximizes Available Work Space
- Includes Mounts for .75" (19mm) Rod Ends

Accuracy: ± 0.25% of Applied Load
Capacity: 5,000lb (2,500kg)

Part # 110060



SHOCK MOUNT SPACERS

Part # 110062 (Set of Four)

PULL BAR RATER ADAPTER

- Determines the Rates of Pull Bars - **ANOTHER INDUSTRY FIRST**
- Works with Intercomp's Coil-Over Spring Tester & Compressor
- Allows Pull Bars to be Loaded in Tension
- Rate Compression-Type Traction Links
- 36" (914mm) Center-to-Center Length Capacity
- Maximum Travel of 6" (152mm)
- Easy-to-Use Adjustable Handles for Fast Changes
- Includes Mounts for .75" (19mm) Rod Ends

Part # 110064



Coil-Over Spring Tester & Compressor Not Included

PYROMETERS & INFRARED GUNS

TIRE & BRAKE TEMPERATURES TELL THE STORY!
MEMORY PYROMETER

Standard Features:

- Temperature Range of 0° to 1,500°F (-17° to 816°C)
- Displays All Four Tire Averages
- **DISPLAYS 14 TIRE TEMPERATURES SIMULTANEOUSLY**
- Stores 10 Sets of Tire &/or Brake Temperatures
- Displays 4 Brake Temperatures & Calculates Front/Rear Bias
- Measures Tire & Brake Temperature in any Sequence
- Enter Tire Temperatures Automatically via the Tire Probe, or Manually via the Keypad
- Backlit Display
- Standard RS232 Output to Computer or Printer
- Selectable in Fahrenheit or Celsius
- Standard 9-Volt Battery Operation
- Includes Type K Tire Probe & Case

Part # 102034

Memory Tire/Brake Pyrometer Accessories page 29



Averages Display

TIRE TEMPS IN DEG F			
INSIDE	CENTER	OUTSIDE	
LF: 211	213	213	
LR: 213	213	202	
RF: 161	170	150	
RR: 182	185	180	
LF AVG: 212	DEG F		
LR AVG: 209			
RF AVG: 160			
RR AVG: 182			
FRONT AVG: 185			
REAR AVG: 196 (+ 10)			
LEFT AVG: 211 (+ 40)			
RIGHT AVG: 171			
CROSS LR+RF: 185			
AVGS: RR+LF: 197 (+ 12)			

BRAKE TEMPS IN DEG F			
BRAKE/TIRE TEMPS IN DEG F			
LF:	1020		
LR:	1114		
RF:	1080		
RR:	1273		
FRONT AVG:	1050	47%	478
REAR AVG:	1194 (+144)	53%	538
LEFT AVG:	1067		
RIGHT AVG:	1177 (+110)		
CROSS LR+RF:	1097		
AVGS: RR+LF:	1147 (+ 50)		

CUSTOM DISPLAYS



Tire Temperature



Brake Temperature

OPTIONS & ACCESSORIES

Part # 360025 TYPE K Tire Probe – 1,500°F (815°C)

Part # 360022 TYPE K Brake Probe – 2,000°F (1,093°C)

Part # 170136 Serial Cable, Pyrometer to Computer

Part # 920176 USB Converter for Pyrometer
(For Use with Serial Cable 170136)



DELUXE PYROMETER

- Temperature Range of 0° to 1,500°F (-18° to 815°C)
- Indication to 2,000°F (1,093°C) with Optional Brake Probe
- Coiled Probe Cord
- Hold Feature
- Indication in 1° or 0.1° Increments
- Displays in °F or °C

Part # 360012



INFRARED LASER TEMPERATURE GUN

- -58° to 1,022°F (-50° to 550°C)
- Accuracy ± 2% of Reading
- Resolution 0.1°
- Backlit LCD Display
- Standard 9-Volt Battery
- Includes Pouch

Part # 360018-E



THERMAL IMAGER

- -4° to 575°F (-20° to 300°C)
- Accuracy ± 2% of Reading
- .25°F (.15°C) Sensitivity
- 2.4" High-Resolution Viewing Screen
- Save Images onto MicroSD Card
- 4 AA Batteries
- Includes Pouch

Part # 175000

GREAT FOR RACE CARS, MOTORCYCLES,
SNOWMOBILES & ATVS

DIGITAL SHOCK INFLATION & PRESSURE GAUGE

- Allows Quick & Easy Pressure Settings to 400 PSI (27 BAR)
- 0.5 Increments
- Displays in PSI, BAR, kg/cm²
- Compatible with Most Shocks
- Thumb-Operated Bleeder Eliminates the Need to "Crack the Seal" to Achieve Desired Pressure
- Comes Standard with "Schrader" Valve Adapter for the Penske-Style Valve
- Needle Adapter for Ohlins-Style Valve is Available



Part # 100675 with Case

Part # 100678 Adapter for Needle Valve

ANALOG SHOCK INFLATION & PRESSURE GAUGE

- Measures Pressure in PSI & BAR
- Pressure Range of 0 to 300 PSI & 0 to 20 BAR
- Liquid-Filled
- Measured in 10lb PSI Increments & 1lb BAR



Part #100675-A

TIRE DUROMETER

- Adjustable Zero
- Type A Removable Tip
- Reads from 0 to 100
- Includes Case



Part # 360092

TIRE DUROMETER/TIRE TREAD DEPTH GAUGE SET



Part # 360110

TIRE TREAD DEPTH GAUGE

- Measures Tire Wear in 1mm & 1/32" Increments
- Aluminum Construction
- Includes Pouch



Part # 360109

DIGITAL TIRE DUROMETER

- Reads from 0 to 99.5
- Push-Button Zero
- Peak Hold Feature
- Large 0.5" Digital Display with Backlight
- Includes Case



Part # 102091

SOUND LEVEL METER W/CASE

- Compact Meter with Digital Display
- Self-Calibrating
- Type 2 Range (35 to 130db)
- Peak Hold Feature
- Variable Response Time
- Monitor Noise Levels to Comply with Regulations
- Standard 9-Volt Battery Operation



Part # 360015

DIGITAL DEPTH GAUGE

- Measures Depth in 0.0005" & 0.0127mm Increments
- Depth Range of 0 to 0.25" (0-6.35mm)
- Accuracy of ± 0.001
- Billet Aluminum Base
- Four Point Design Improves Repeatability
- Large 0.5" Digital Display with Backlight
- Includes Case



Part # 102081

AIR PRESSURE GAUGES

DELUXE AIR PRESSURE GAUGES

All Analog Air Pressure Gauges Include:

- Swivel at Air Chuck
- 17" (431mm) Swivel Hose
- Heavy Duty Rubber Protective Boot Around Dial Gauge
- Thumb-Operated Bleeder

Analog Pressure Gauges

Deluxe
Air Gauge

PART NUMBER	SPECIFICATIONS
360062	2" 0 to 15 x 1/5 PSI
360063	2" 0 to 30 x 1/2 PSI
360064	2" 0 to 60 x 1 PSI
360065	2.5" liquid-filled, 0 to 15 x 1/5 PSI
360066	2.5" liquid-filled, 0 to 30 x 1/2 PSI
360067	2.5" liquid-filled, 0 to 60 x 1 PSI
360068	2.5" Glow-in-the-Dark, 0 to 15 x 1/5 PSI
360069	2.5" Glow-in-the-Dark, 0 to 30 x 1/2 PSI
360070	2.5" Glow-in-the-Dark, 0 to 60 x 1 PSI

Ultra
Deluxe
Air Gauge

PART NUMBER	SPECIFICATIONS
360058	4" Glow-in-the-Dark, 0 to 15 x 1/2 PSI
360059	4" Glow-in-the-Dark, 0 to 30 x 1 PSI
360060	4" Glow-in-the-Dark, 0 to 60 x 1 PSI
360078	4" Glow-in-the-Dark, 0 to 100 x 1 PSI
360071	4" Glow-in-the-Dark, 0 to 1 x .02 BAR
360072	4" Glow-in-the-Dark, 0 to 2 x .05 BAR
360073	4" Glow-in-the-Dark, 0 to 4 x .10 BAR



DIGITAL FILL, BLEED & READ AIR PRESSURE GAUGE

- 0 to 150 PSI (0 to 10 BAR)
- Readout in 0.1 Increments
- Delivers Unsurpassed Accuracy via the Digital Gauge
- Displays in PSI, BAR & kg/cm2
- Available with Ball or Angle Chuck
- Standard 9-Volt Battery Operation
- Includes Case



Part # 360094 with Angle Chuck

Part # 360094-BC with Ball Chuck

ANALOG FILL, BLEED & READ AIR PRESSURE GAUGE

- Attaches Directly to your Air or Nitrogen Hose
- Includes High-Quality 4" (100mm) Pressure Gauge with Rubber Protective Boot
- 22" (559mm) Hose with Swivel Nozzle
- Industrial-Grade Bleeder Valve

PART NUMBER	SPECIFICATIONS
360086	4" 0 to 30 x 1 PSI
360087	4" 0 to 60 x 1 PSI
360088	4" 0 to 100 x 1 PSI
360089	4" 0 to 2 x .05 BAR
360090	4" 0 to 4 x .10 BAR



The air chuck never leaves the valve stem

#1 DIGITAL GAUGE USED BY TOP RACING TEAMS FACTORY-CALIBRATED DIGITAL AIR PRESSURE GAUGES

- Accuracy of 0.1%
- Giant 0.5", Backlit Display Characters
- Thumb Operated Bleed Off
- Dual Bleeder Allows for Faster Bleeding
- 22" (559mm) Hose
- Displays in PSI, BAR & kg/cm2
- Standard 9-Volt Battery Operation
- Includes Case



Ball Chuck



6" (153mm)
Dual Chuck



Reads to
99.99 PSI

Selectable from
.1 to .01 PSI

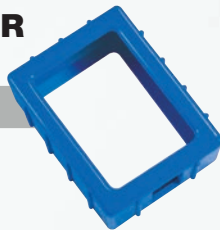
Angle Chuck



Reads to
150 x .1 PSI

Angle Chuck

DIGITAL AIR GAUGE COVER



Part 179009

Part # 360045 with Angle Chuck

Part # 360045-BC with Ball Chuck

Part # 360045-150 with Angle chuck

Part # 360045-150-BC with Ball Chuck

Part # 360045-150-D with Dual Chuck



DUAL DISPLAY FOR EASY VIEWING OF ALL PRESSURES MEMORY TIRE PRESSURE GAUGE

- Reads to 0.1 PSI
- Compensates for Barometric Pressure Changes
- Stores pressure OUT/COLD, IN/HOT & Calculates GAIN
- Stores 10 Complete Sets of Pressures IN/HOT, OUT/COLD & GAINS
- Standard RS232 Output to Computer or Printer
- Displays in PSI, BAR & kg/cm2
- Maximum Pressure 100 PSI
- Backlit Display
- Standard 9-Volt Battery Operation

MEMORY AIR PRINTOUT

INTERCOMP, U.S.A.
TEL: 763-476-2531

	COLD	HOT	DIFF.
LF	22.2	24.6	+2.4
LR	22.2	24.6	+2.2
RF	31.1	33.3	+2.2
RR	31.0	33.3	+2.3

Part 102058

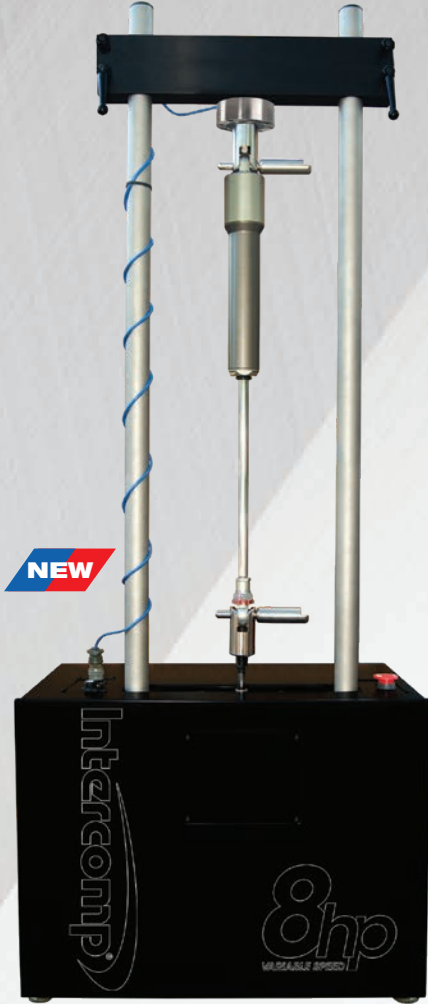
JOE GIBBS RACING | NASCAR



Toyota trademarks used with permission. © 2017 Joe Gibbs Racing, Inc.

VARIABLE SPEED SHOCK DYNAMOMETER

INTERCOMP VARIABLE SPEED SHOCK DYNAMOMETERS



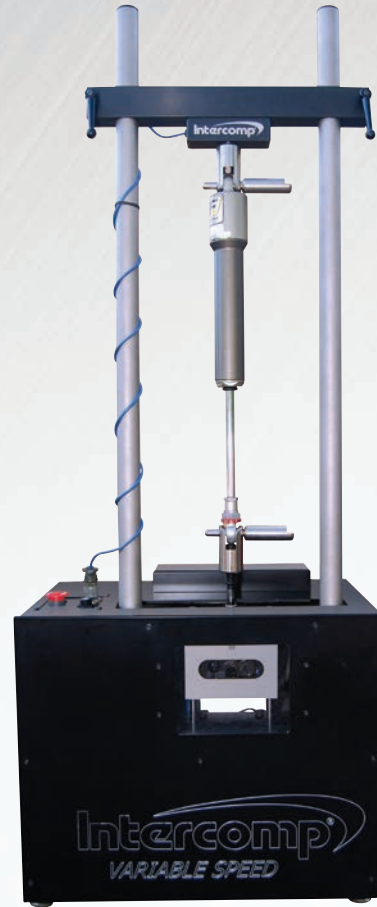
8hp VARIABLE SPEED SHOCK DYNAMOMETER

- 8hp Motor
- 40" Eye-to-Eye Masts
- 8hp Variable Speed: 0.5 to 40 in/sec
- Adjustable Stroke: 0.5", 1.0", 1.5" or 2"
- Type K Infrared Thermocouple Sensor
- Three-Phase 220V Power
- Low-Profile Load Cell
- Scotch Yoke System
- USB Connection



Dedicated Laptop Included!

Part # 177004 8hp Shock Dyno



3hp VARIABLE SPEED SHOCK DYNAMOMETER

Dynamometer Specs:

- 3hp Motor
- 3hp Variable Speed: 0.5 to 19 in/sec
- 3hp HIGH SPEED DYNO SPEED: 0.5 to 55 in/sec
- Adjustable Stroke: 1.0", 1.5", 2.0" or 2.25"
- Type K Thermocouple Sensor
- Runs on 220V Power
- Scotch Yoke System
- 2,000lb Load Cell
- USB Connection



Dedicated Laptop Included!

Part # 102093 3hp Shock Dyno, 28" Masts

Part # 102093-40 3hp Shock Dyno, 40" Masts

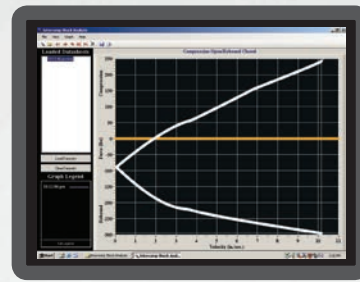
Part # 102092 3hp High Speed Shock Dyno, 28" Masts

Part # 102092-40 3hp High Speed Shock Dyno, 40" Masts

SHOCK ANALYSIS SOFTWARE



Laptop Included with Dyno

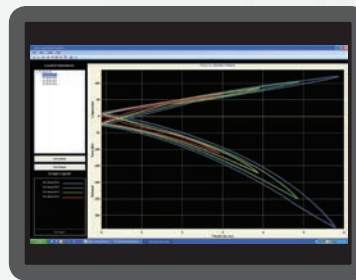


Compression Open/
Rebound Closed

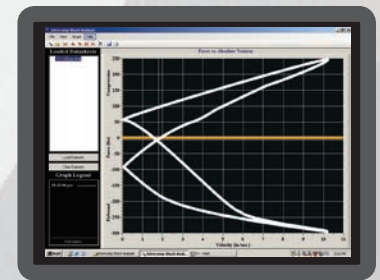
INTERCOMP SHOCK ANALYSIS SOFTWARE

Software Features:

- User-Friendly, Easy-to-Operate
- Load & View Previous Shock Tests
- Overlay 20 graphs
- Display All Measurement Units Independently
 - Force: lb/kg/N
 - Distance: in/cm
 - Temp: °F/°C
 - Pressure: PSI, Bar, kg/cm²
- Seal Drag & Rod Pressures
- Warm Up for Time or Temp
- Live Data Display/Live Graphing Option
- Real-Time PVP Graphing with CVP Graphs for Each Velocity Interval
- Peak Velocity Pick Off Testing/Graphing (PVP)
- Constant Velocity Testing/Graphing (CVP)
- View Data Points in 0.1", 0.5", 1.0" or 2.0" Intervals
- Software Compatible with Windows®7, Windows® 8 & Windows® 10



Compare Shocks

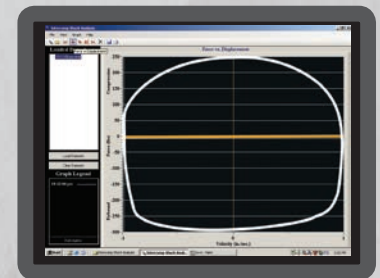


Force vs Absolute Velocity

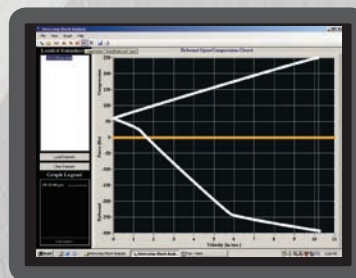
Issue: 11 Data Points @ Standard (Using Ethanol) Shock

Velocity	CO	RO	BC	OO	OR	RA
0.0	4	4	-36	-34	-15	-15
0.1	3	3	-37	-31	-13	-13
0.2	2	3	-41	-27	-11	-11
0.3	1	1	-44	-24	-8	-8
0.4	0	-1	-48	-20	-3	-3
0.5	0	-4	-52	-17	-5	-5
0.6	0	-7	-56	-14	-2	-2
0.7	0	-11	-61	-11	-1	-1
0.8	0	-15	-65	-8	1	-4
0.9	0	-19	-69	-5	2	-4
1.0	0	-23	-72	-3	4	-4
1.1	0	-27	-75	-1	5	-1
1.2	0	-31	-77	1	7	-4
1.3	0	-34	-79	2	8	-7
1.4	0	-36	-81	4	9	-9
1.5	0	-41	-82	5	10	-12
1.6	0	-45	-83	6	11	-12

Data Points



Force vs Displacement



Compression Closed/
Rebound Open



Live CVP

TEST EQUIPMENT

WIRELESS BILLET GAS SCALE

- 400lb (200kg) Capacity
- 10" x 10" x 2" (254 x 254 x 51mm) Wireless RFX™ Billet Scale Pad
- Displays in 0.1lb (.05kg) Increments
- USB & RS232 Output
- Ultra-Lightweight Platform Scale
- Designed to Weigh Dump Cans
- Digital Display
- Push-Button Zero
- Standard AA Battery Operation

Part 170193



BILLET GAS SCALE

- 400lb (200kg) Capacity
- 10" x 10" x 2" (254 x 254 x 51mm) Billet Scale Pad
- Displays in 0.1lb (.05kg [up to 100kg, then 0.1kg]) Increments
- Designed to Weigh Dump Cans
- Digital Display
- Push-Button Zero
- Standard 9-Volt Battery Operation

Part 170255



TIRE HUMIDITY/TEMPERATURE METER

- Measures Relative Humidity (%RH) & Temperature in °F or °C within a Tire
- Includes Valve Stem Adapter
- Standard 9-Volt Battery Operation



Part 360036

TIRE DRYING/PURGING SYSTEM

PATENT # 7,137,417

- No Electrical Source Necessary
- Easy-to-Use Tire Drying & Purging System
- Vacuum & Fill Four Tires Simultaneously in Minutes
- Vacuum Gauge Included
- Compact, Easily Transported System
- Transport on Supplied Cart or Mount in Trailer
- Uses Compressed Air or Nitrogen
- Controls Stagger Growth
- Reduces Tire Wear & Limits Pressure Gain
- Eliminates Tire Glazing
- Tire Chucks Included

Part # 102064



SCALE CART

- High-Quality Scale Cart with Wheels
- Strong & Lightweight
- Can Accommodate any Combination of Six Scale Pads or Turn Plates in both 2.5" (64mm) & 4" (100mm) Profiles, Carries Cables & Controller

Dimensions: 20.6" x 21" x 41.5"
(524 x 533 x 1,054mm)

Part 100346



SCALE SYSTEM ACCESSORIES

Replacement Cables

(Set of Four) for SW500/520/650R1/777 Cabled Scale Systems **Part # 170135**

- Cable-RED **Part # 560036**
- Cable-GREEN **Part # 560038**
- Cable-BLACK **Part # 560035**
- Cable-WHITE **Part # 560037**

Case, Foam-Lined for Equipment

Dimensions: 13.5" x 10" x 3.75" (340 x 250 x 95mm) **Part # 100958**

Case, Foam-Lined for Equipment

Dimensions: 19" x 14" x 5.5" (482 x 355 x 140mm) **Part # 490146**

120V/220V Transformer FOR ALL SCALE SYSTEMS

Part # 260108

Thermal Printer for Wireless Scales (Operates 120/220 volt)

Part # 340105

Cable, Thermal Printer to Scale (Stereo to 9-pin)

Part # 179002

Cable, Scale to Computer (9-pin) 6' (2m)

Part # 170136

NiMH Rechargeable Battery, (9V) FOR CABLED SCALE SYSTEMS

Part # 330101

Battery Pack, AA NiMH (Set of Four) FOR WIRELESS SCALE SYSTEMS

Part # 330142-4

Cable, USB FOR WIRELESS SCALE SYSTEMS

Part # 920146

USB Converter FOR CABLED SCALE SYSTEMS

Part # 920176

(For Use with Serial Cable 170136)

Memory Tire/Brake Pyrometer Accessories

Cable, Tire Pyrometer to Printer

Part # 179002

USB Converter for Pyrometer (For Use with Serial Cable 170136)

Part # 920176

Serial Cable, Tire Pyrometer to Computer (9-pin)

Part # 170136

SYSTEM CARRYING CASE

- ATA300-Approved Case with 12-Gauge Corners, Mil-Spec Latches & Handles
- Carries all Four Pads, Cabling & Controller

Dimensions:

Case for 2.5" (64mm) Profile Pads

21" x 17.5" x 21" (530 x 445 x 530mm)

Case for 4" (100mm) Profile Pads

30.7" x 17.7" x 21" (780 x 450 x 530mm)

Part # 100055-R for 2.5" (64mm) Pad System

Part # 100056-R for 4" (100mm) Pad



SCALE PAD STORAGE CASE FOR 2.5" (64MM) SCALE PADS

- Carries Four 2.5" (64mm) Scale Pads
- Includes Scale Pad Dividers

Dimensions: 17.7" x 17.7" x 13.5"
(450 x 450 x 343mm)

Part 490197



SOCIAL MEDIA & APPAREL

IT'S EASIER THAN EVER TO CONNECT WITH US.

STAY CURRENT ON ALL OF THE LATEST PRODUCT & RACING NEWS FROM INTERCOMP



@intercompracing



facebook.com/intercompracing



@intercompracing1



www.intercompracing.com



OFFICIAL TEAM INTERCOMP RACING MERCHANDISE



- Part # 710060 9.25" x 3" Decal
- Part # 710018 Embroidered Cotton Golf Shirt
- Part # 710055 Team Intercomp Banner (36" x 72" Vinyl with Brass Eyelets)

Order Information

New dealer/distributor accounts must submit a credit application signed & dated by a manager. Please contact us to learn more.

Order hours: Monday thru Friday 8:00 am - 5:00 pm Central Time
Toll Free: (800) 328-3336 USA
Phone: (763) 476-2531 Worldwide
Fax: (763) 476-2613 Worldwide
Mail: Intercomp Company
 3839 County Road 116
 Medina, Minnesota 55340 USA



Shipping Options: UPS, FedEx, Motor Freight & USPS

- Please note that products cannot be shipped by UPS, Motor Freight or FedEx to a PO Box or APO
- Freight charges are F.O.B. Medina, Minnesota USA
- Method of Payment: Visa, Mastercard, Discover, American Express, Money Order & Bank Wire

Terms, Warranty & Return Policy

Terms

All products listed herein are F.O.B. Medina, Minnesota 55340 USA. Terms are such as the company may extend to the purchaser not to exceed Net in 30 days from the date of invoice. Past due accounts will be charged 1.5% of total order value per month &/or may be subject to re-stocking or cancellation fees. UPS is the standard mode of shipping. Shipping & handling charges are not included in the net prices. Insurance will be added to all orders shipped via UPS unless instructed otherwise. Intercomp shall not be liable for loss, damage, detention, or delay resulting from causes beyond its reasonable control or caused by fire, strike, civil, or military authority.

Warranty

Subject to the terms & conditions as stated herein, Intercomp Company, (hereafter referred to as "Intercomp"), warrants its scales to be free from defects in material & factory workmanship for a period of twenty-four months, analog gauges for a period of three months, all other equipment twelve months from the date of shipment from Medina, MN USA.

Terms & Conditions of Limited Warranty

This obligation is limited exclusively to defective original equipment manufactured or supplied by Intercomp & is subject to the inspection & analysis by Intercomp as to conclusively identify or confirm the nature & cause of failure. Intercomp's responsibility is confined to repair, replace or credit & does not extend coverage to labor, material or service charges involved in removal or installation of equipment.

Defective components mechanical or electrical, will be repaired or replaced at Medina, Minnesota, provided the user ships the equipment freight prepaid to Medina, Minnesota, in accordance with the Intercomp return to manufacturer authorization procedure. Intercomp is not responsible & will not be held liable for losses, injury or damage caused to persons or property by reason of the installation of Intercomp products or their mechanical failure.

This warranty is not applicable for expenses either direct or consequential that may arise for the use of or inability to use these products.

Statement of Limited Warranty

This warranty shall not apply to equipment which:

- Has had repairs or modifications not authorized by Intercomp which, in Intercomp's judgement, has affected the performance or reliability.
- Has been subject to misuse, negligent handling, improper installation, accident, damage by fire, water or act of God.
- Has had serial numbers altered, defaced or removed.

Freight Carrier Damage

Claims for equipment damaged in transit must be referred to the freight carrier. Visible damage should be reported immediately, concealed damage as soon as possible, or in any case, within ten (10) days of receipt of shipment, in accordance with freight carrier regulations.

Return of Standard Equipment

At Intercomp, we want you to be completely satisfied with any product purchased from us. If it does not work, or is not correct, return it freight prepaid for full credit or replacement less shipping, within 30 days of delivery from Intercomp. We may, at our option, assess a restocking charge if the equipment was:

- Not correctly specified for the application intended.
- Damaged beyond reasonable recovery.

The restocking charge is directly proportional to the amount of time & material expense required by us to return the item to resale condition. If an item was held in excess of 30 days, a minimum restocking charge of 15% will be assessed.

Return Procedure

When returning equipment for repairs these simple steps will help to expedite your request:

- Call 800-328-3336 or 763-476-2531 & ask for the Customer Service Department. A Service Team Member will issue you an (RMA) Return to Manufacturer Authorization Number. Goods received without an RMA# may be refused.
- Provide a written description of the problem you are experiencing & enclose it with the shipment.
- Please write the RMA# on the outside of the package to help us speed your package through our receiving process.
- Provide Proof of Receipt sending original dated receipt with product return.

We will make every effort to repair any Intercomp product, regardless of age or condition. Please be aware that a minimum repair charge is subject to all items not covered by warranty.

PRODUCT DIRECTORY

Product Description	Page
Air Density Gauge	20
Air Pressure Gauges	24,25
Alignment Equipment	15-17
Angle Gauge	17
Apparel	30
Arbor Valve Spring Pressure Tester	20
Batteries	29
Brake Probes	22
Bump Steer Gauge	17
Bump Stop Rater	20
Cables	29
Caster Camber Gauges & Accessories	14,16
Coil Spring Testers	21
Combination Leak Down/Compression Tester	20
Digital Tire Durometer	23
Drive-On Set Up Racks	18
Dunlop Wheel Adapter	17
Durometers	23
Dynamometers	26,27
Engine Tools	20
Fill, Bleed & Read Gauges	24
Fork Spring Tester	21
Gas Scales	28
Gauges & Durometers	23
iRaceWeigh™ App	9
Kart Scale Systems & Accessories	13,14
Kart Setup Racks	14
Lap Timers & Accessories	22,29
Laser Levels	19
Levelers	19
Microflex™ Scale Systems	10
Precision Hub Plate Scale System	11
Printers	29
Pull Bar Rater	21
Pyrometers & Infrared Guns	22
Racks	14,18
Ramps	19
Rim Clamps	16
Scale Accessories	29
Scale Carts	29
Scale Cases	29
Scale Levelers, Ramps & Racks	14,18,19
Scale Pad Levelers	19
Scales	5-13,28
Shock Inflation Gauges	23
Shock, Spring & Torque Testers	21
Sound Level Meters	23
Specialty Scale Systems	12
Temperature Guns	22
Thermal Imager	22
Tire Drying/Purging System	28
Tire Humidity/Temp Meter	28
Tire Pressure Gauges	24,25
Tire Probes	22
Toe Plates	17
Torque Wrench Tester	21
Transformers	29
Tread Depth Gauges	23
Turn Plates	15
Valve Seat Pressure Tester	20
Valve Spring Tester	20
Variable Speed Shock Dynamometers	26,27
Wireless Scale Systems	4-8,10-13,28



CHAMPIONSHIP WINNING | SCALES & CHASSIS SET-UP EQUIPMENT



JOE GIBBS RACING | NASCAR
Toyota trademarks used with permission. © 2017 Joe Gibbs Racing, Inc.

[facebook.com/intercompracing](https://www.facebook.com/intercompracing)
[@intercompracing](https://twitter.com/intercompracing)
[@intercompracing1](https://www.instagram.com/intercompracing1)
highperf@intercompcompany.com
 Worldwide: +1 763-476-2531
 Toll Free: 800-328-3336



intercompracing.com

Specifications subject to change without notice.

CE ISO 9001:2008 Registered

