

EDGE

W E L D I N G S U P P L Y

Connecting with people, building relationships,
providing premium products to help others succeed!

WHO IS EDGE?

EDGE Welding Supply and its employees have a mission statement that we try to serve every customer with. "Connecting with people, while building relationships, and providing superior products to help people succeed." We try to hold ourselves and our employees to this standard, with every order that is sent out. We know that without people, and relationships there is no way to truly succeed, not only in business, but in life.

EDGE Welding Supply is a small, family run business, that started in Cornelius, North Carolina. We originally started as a one man facility and have been growing year to year since. We originally thought our business would remain family but as we meet more people and establish relationships, we have discovered that just because you aren't related, doesn't mean you can't have people that are close enough to be family. We have discovered, over the years, how important feedback and constructive

criticism is for our customers and ourselves, so we decided to make our own EDGE Army. We have put together an amazing variety and array of talented and skilled brand ambassadors in the industry that are truly a part of the EDGE Family, and provide product testing, offer feedback, ideas, and constructive criticism.

We started our product line with 6 original Pyrex cups and now offer over 200 different TIG cups and MIG nozzles. This includes Pyrex and Quartz cups and nozzles, plus our custom shop for product solutions that are out of the ordinary. Our products serve customers worldwide, and provide solutions to common and difficult situations, for a wide variety of individuals including hobbyist, racing, fabricators, pipeline, orbital, nuclear, aerospace, aviation and military. We help people discover their true talent without the hinderance of faulty, and ill-tested products.

The logo for EDGE ARMY is displayed in a large, bold, sans-serif font. The word 'EDGE' is on the top line and 'ARMY' is on the bottom line. The letters are filled with a gradient from purple on the left to yellow on the right. The background is a grey and white diagonal striped pattern.

GET CONNECTED WITH US
FACEBOOK / INSTAGRAM / TWITTER / LINKEDIN / YOUTUBE / TIKTOK



EDGE PRODUCTS

EDGE Welding Supply has brought a distinctive difference to the welding landscape, through product diversity and innovation. We have over 50 combined years of scientific and industrial glass blowing experience, which translates to diversity for the customer. The EDGE Welding Supply team knows that we don't have experience in all situations and we don't let pride get in the way for the customer. We have established one of the greatest teams of men and women in the industry, by partnering with amazing talent through our 'EDGE Army'. They give feedback, bring experience and ideas for the market to the forefront through on the job situations, which allows EDGE to bring solutions to our customers.

KEY FEATURES

- High grade, laboratory Pyrex and Quartz glass
- Double o-ring for a gas tight seal
- Adapters that fit your existing gas lens
- Made, designed, and patented in the USA
- Laminar flow — saves up to 30% on gas over standard gas lens
- Customizable for hard to reach places and unusual circumstances at fraction of the cost of ceramic

PYREX VS. QUARTZ

WHICH IS BETTER FOR MY APPLICATION?

PYREX

- Same material as laboratory and cooking dishes.
- Good physical properties
- Good for stainless steel, carbon steel, alloy, Inconel, titanium, copper
- Tough glass
- High melting temperature (1500°F, 820°C)
- Less expensive option
- Customizable
- High amperage

QUARTZ

- High purity fused quartz glass
- Specifically designed for aluminum welding, but can be used on all materials
- High melting temperature, (2800°F, 1550°C)
- Customizable
- High amperage

TABLE OF CONTENTS

IDENTIFY	4-5
EDGE Laminar Flow Series	6-7
EDGE Gas Lens Series EDGE Gas Lens Series Conversion	8-9
EDGE Q Series (ALLY)	10
EDGE Shorty Series	12-13
EDGE XL and XXL Series	14-15
EDGE Narrow Series	16
EDGE Large Diameter Series	18-19
EDGE Gas Lens Cases	20-21
EDGE Collet Body 920 Series	22-23
EDGE Collet Body Conversion	24
EDGE Collet Body 1718 Series	25
EDGE MIG Series	28-29
EDGE Custom	30



IDENTIFY What I Need?

1 What is the number on the side of your torch?



2 Do you use a gas lens or collet body?



3 Which gas lens do you have?
2 series gas lens, 3 series gas lens, 4 series short gas lens, 3 series large diameter gas lens, or 2 series large diameter gas lens



3

Which collet body do you have?

2 series collet body, 3 series collet body, 4 series short collet body,



2 Series

Collet Body

*2CB332 (13N28)



3 Series

Collet Body

*3CB332 (10N32)

4 Series Stubby
Collet Body

*4CB332



Solution

WP9, WP20, WP25, A-125, W-200 Pencil Flex, W-225 Pencil, W-250, W-280, W-310, W-375, and A-200 Modular TIG Torches with 2 Series Gas Lens pages 6-17, 20-21

WP9, WP20, WP25, A-125, W-200 Pencil Flex, W-225 Pencil, W-250, W-280, W-310, W-375, and A-200 Modular TIG Torches with 2 Series Collet Body pages 22-23

WP9, WP20, WP25, A-125, W-200 Pencil Flex, W-225 Pencil, W-250, W-280, W-310, W-375, and A-200 Modular TIG Torches with Large Diameter 2 Series Gas Lens pages 18-19

WP17, WP18, WP26, W350, A-150, A-200, A-250, W-350, W-410, W-225 Modular, and W-500 Pencil Auto TIG with 3 Series Gas Lens (Long) with EDGE Conversion (4 Series Shorty Gas Lens) pages 6-17, 20-21

WP17, WP18, WP26, W350, A-150, A-200, A-250, W-350, W-410, W-225 Modular, and W-500 Pencil Auto TIG with 3 Series Collet Body (Long) page 25

WP17, WP18, WP26, W350, A-150, A-200, A-250, W-350, W-410, W-225 Modular, and W-500 Pencil Auto TIG with Large Diameter 3 Series Gas Lens pages 18-19

WP17, WP18, WP26, W350, A-150, A-200, A-250, W-350, W-410, W-225 Modular, and W-500 Pencil Auto TIG Torch with 4 Series (Shorty) Gas Lens pages 6-17, 20-21

WP17, WP18, WP26, W350, A-150, A-200, A-250, W-350, W-410, W-225 Modular, and W-500 Pencil Auto TIG with 4 Series (Shorty) Collet Body pages 22-24

EDGE Laminar Flow Series™



The EDGE Laminar Flow Series™ is the most advanced and premium welding cup on the market. EDGE Welding Supply has created laminar flow through fluid dynamics, design, and scientific testing. Your standard pink ceramic cup does not optimize the flow of gas, even with a gas lens. Through testing, we discovered, as gas exits out of the cup it produces turbulence, and when it tumbles it collects oxygen. The oxygen is then deposited on your weld that you have meticulously prepared, only to discolor, or worse. We have discovered how to take that turbulent gas and create laminar flow. Compare it to taking an aerator off of a common faucet and running the water. It swirls and tumbles as it comes out, but then put the aerator back on and the water is a perfect cylindrical shape. That's what we have done through fluid dynamics with our EDGE Laminar Flow Series.

EDGE Laminar Flow Complete Kit

Includes EDGE Adapter with o-rings, Thermal Spacer, 6 (4,5,6,7,8,10) EDGE Laminar Flow Cups with EDGE Diffusers (available in sizes 1/16, 3/32, 1/8 or 5/32)
Torch and gas lens not included



EDGE Laminar Flow Starter Kits

Includes EDGE Adapter with orings, Thermal Spacer, 2 EDGE Laminar Flow Cups, you select 2 cups of the same size, with EDGE Diffusers (available in sizes 1/16, 3/32, 1/8 or 5/32) available in 4, 5, 6, 7, 8, 10



EDGE Laminar Flow Individual Cups

Available in 4,5,6,7,8,10 with Diffusers (1/16, 3/32, 1/8 or 5/32)



EDGE Conversion

The EDGE Conversion allows you to put your own kit together, purchase a complete kit or you can select a case (on pages 20–21), being sure to select the 17, 18, 26 option, includes the EDGE Conversion in the Case.

DO I NEED IT?

If you have a WP17, WP18, WP26, W350, A-150, A-200, A-250, W-350, W-410, W-225 Modular, and W-500 Pencil Auto TIG torch, or similar that uses a 3 Series Gas Lens (pages 4–5). If you do, then you can take advantage of the EDGE conversion in order to use the short cups meant for the lower amperage torches.

WHAT IS IT?

Included: GL adapter, GL o-rings, 4 series (stubby gas lens and collet)

WHAT NOW?

After you purchase the EDGE conversion, you can then purchase any cup from the GL series cups, Pyrex and Quartz. (All cups on pages 6-17, 20–21.)



EDGE GAS LENS ORIGINAL SERIES

Our Gas Lens series is our most popular and most versatile product line. We have taken your favorite ceramic cups that fit onto your gas lens and converted them to glass. Each cup is hand made to exacting standards, is size marked, receives a heat treatment, and is checked for flaws with our inhouse quality control system. This all happens before they are packaged and shipped to you. We want to ensure that you are maximizing your time and energy towards your success and project. This Series is available in sizes 4, 5, 6, 7, 8, 10, 12, 15, 18 and 21! Each item can be purchased individually, in Starter Kits as well as Complete Kits and in EDGE Cases (page 20–21). If you have a 9, 20, 25 torch and those that have a 17, 18, 26 torch with the EDGE Conversion (page number 7), you can use all of this Gas Lens Series directly on your torch with the EDGE GL Adapter!



EDGE Individual Cups

Available in 4, 5, 6, 7, 8, 10

EDGE COMPLETE KIT

Includes EDGE Adapter with o-rings, Thermal Spacer, 6 (4, 5, 6, 7, 8, 10) EDGE Cups



EDGE GL Adapter

Fits on 9, 20, 25 torches as well as 17, 18, 26 with the EDGE Conversion



EDGE O-Rings

For the GL Adapter



EDGE Thermal Spacer

For the 9, 20, 25 torches both Collet Body and Gas Lens Series

EDGE Starter Kits

Includes EDGE Adapter with o-rings, Thermal Spacer, 2 EDGE Cups, you select size



EDGE 12, 15, 18, AND 21

If you are looking for superior gas coverage with a long tungsten stick out as an option, the EDGE 12, 15, 18 and 21 are available in the standard length and they are also available in the EDGE Shorty Series. These diffuser style cups offer complete coverage over the full diameter of the cup for a superior weld.



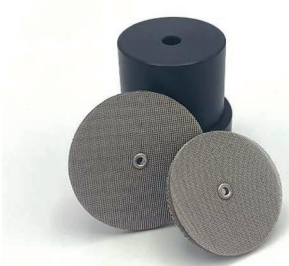
EDGE 21 Ti Cup

The EDGE 21 cup was created because there was a call for a larger cup with the superior EDGE gas coverage, so we stepped up and introduced the 21. We created it for the titanium community, but we're not done yet. The titanium community has spoken and EDGE listened.



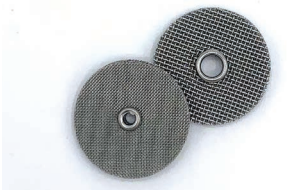
EDGE Diffuser Install Tools

Make your diffuser installation quick and easy with the EDGE Diffuser Installation Tool. They are specifically designed to make installation fast and flawless. Available for 4-12 cups, 15, 18 and 21 EDGE Diffusers.



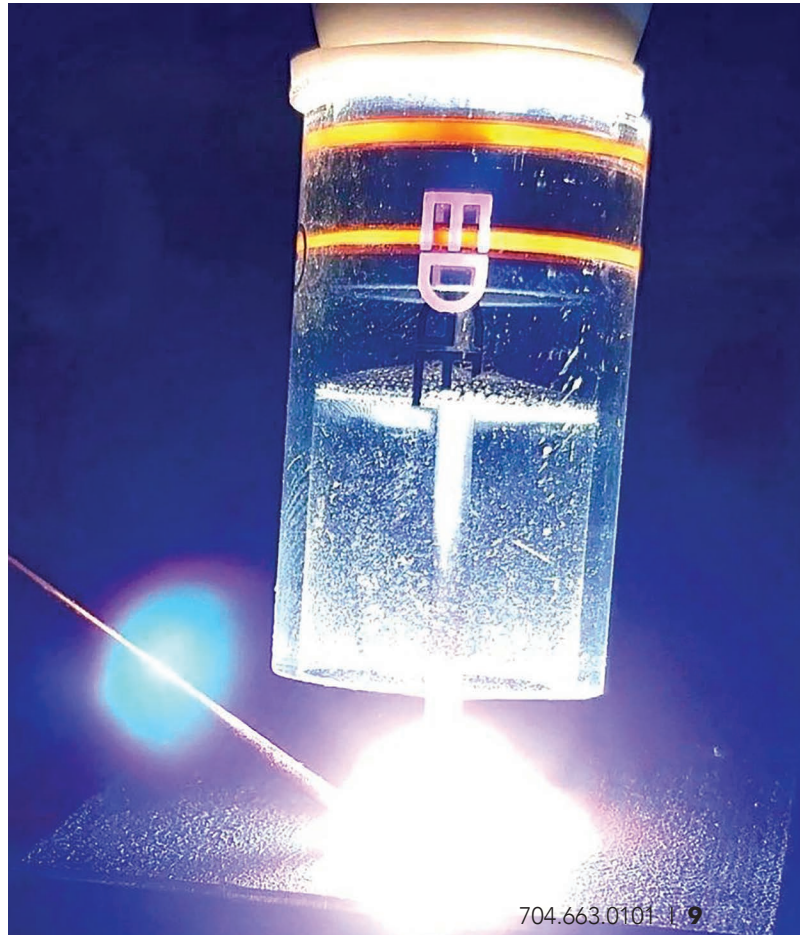
EDGE Diffuser Tool Kits

Select EDGE Diffuser size 1/16, 3/32, 1/8 and 5/32
Includes Diffuser Install Tool, and 2 Diffusers



EDGE Replacement Diffusers

Available cups 4-12, 15, 18 and 21 in sizes 1/16, 3/32, 1/8 and 5/32





EDGE Q Series

ALLY CUPS

EDGE Welding Supply discovered early on that there was a need for a clear, customizable cup that could be made from an advanced material that would be able to withstand the rigors of aluminum (ALLY) welding. The Q series was born with all the favorite sizes available for higher temperature welding while continuing to give superior clarity, cleanliness and superior gas coverage.



EDGE Q Series COMPLETE KIT

Includes EDGE Adapter with o-rings, 6 Thermal Spacer, (6, 7, 8, 10, 12S 12SS, and 12) EDGE Q Series Cups some with EDGE Diffusers, available in sizes 1/16, 3/32, 1/8, and 5/32



EDGE Q Series Individual Cups

Available in 4,5,6,7 and 8. 10, 12SS, 12S and 12 with Diffusers (1/16, 3/32, 1/8 or 5/32)



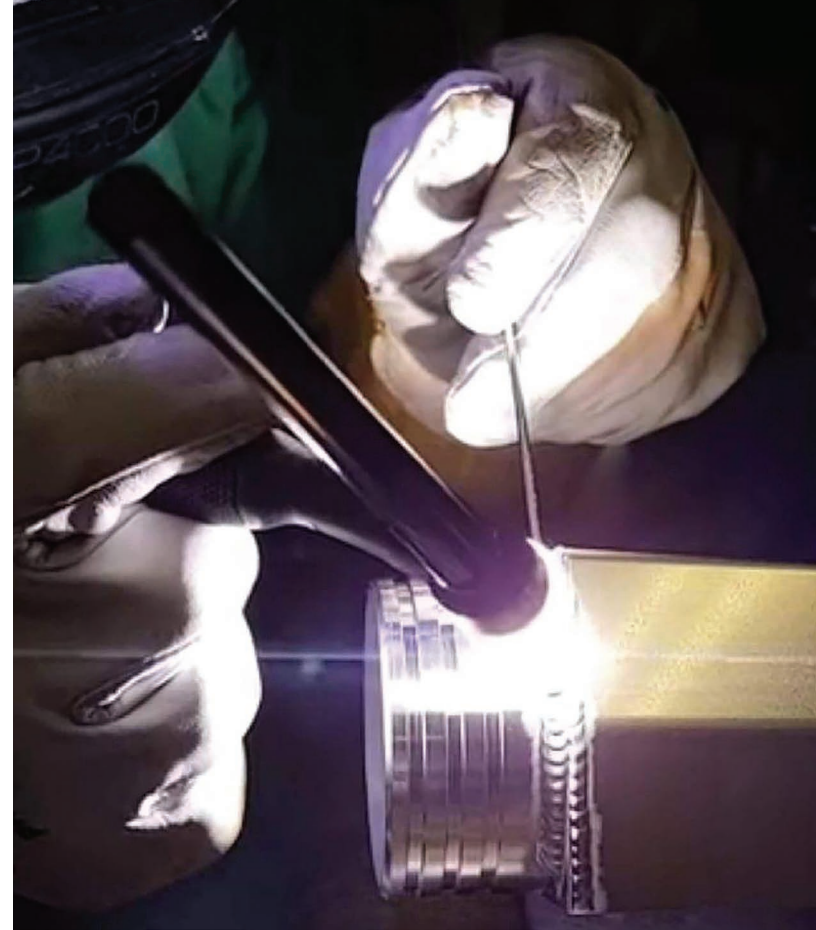
EDGE Q Series Starter Kits

Includes EDGE Adapter with orings, Thermal Spacer, 2 EDGE Q Series Cups, select 2 cups of the same size, some with EDGE Diffusers (available in sizes 1/16, 3/32, 1/8, or 5/32) available in 4, 5, 6, 7, 8, 10, 12 Super Shorty, 12 Shorty, and 12



EDGE GL Adapter

Fits on 9, 20, 25 torches as well as 17, 18, 26 with the EDGE Conversion



EDGE O-Rings

For the GL Adapter, 2-pack

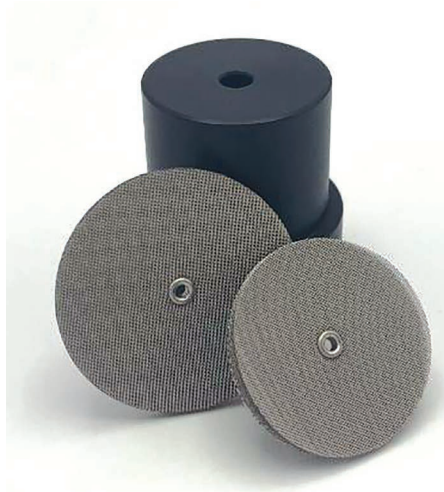


EDGE Thermal Spacer

For the 9, 20, 25 torches both Collet Body and Gas Lens Series

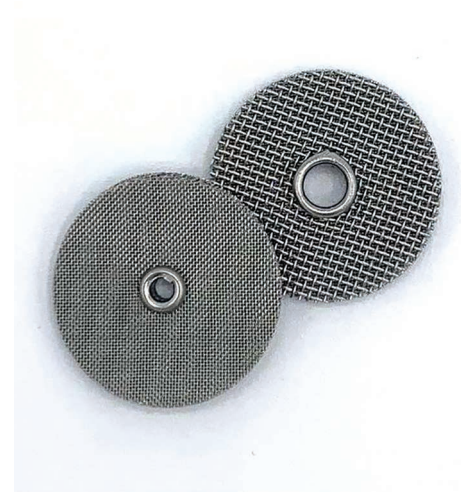
EDGE Diffuser Install Tools

Make your diffuser installation quick and easy with the EDGE Diffuser Installation Tool. They are specifically designed to make installation fast and flawless. Available for 4-12 cups, 15, 18 and 21 EDGE Diffusers. Each one offers 2 sizes of your choice.



EDGE Diffuser Tool Kits

Select EDGE Diffuser size 1/16, 3/32, 1/8 and 5/32 Includes Diffuser Install Tool, and 2 Diffusers



EDGE Replacement Diffusers

Available cups 4-12, 15, 18 and 21 in sizes 1/16, 3/32, 1/8 and 5/32, 2-pack

EDGE Shorty Series

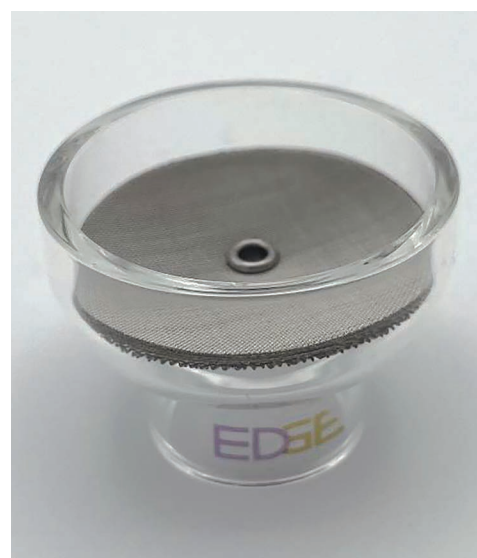


The EDGE shorty series is a premium line of Pyrex cups that are available in a 10 shorty, 12 shorty, 12 super shorty, 15 shorty, and 18 shorty, and a 21 shorty. They are designed to ensure the same quality gas flow as the Laminar Flow Series, but instead of the same length, we gave it a shorter hair cut by taking a little off the top.



EDGE SHORTY COMPLETE KIT

Includes EDGE Adapter with orings, Thermal Spacer, 6 (10, 12SS, 12S, 15, 18 and 21) EDGE Shorty Cups with EDGE Diffusers (available in sizes 1/16, 3/32, 1/8 or 5/32)



EDGE Shorty Starter Kits

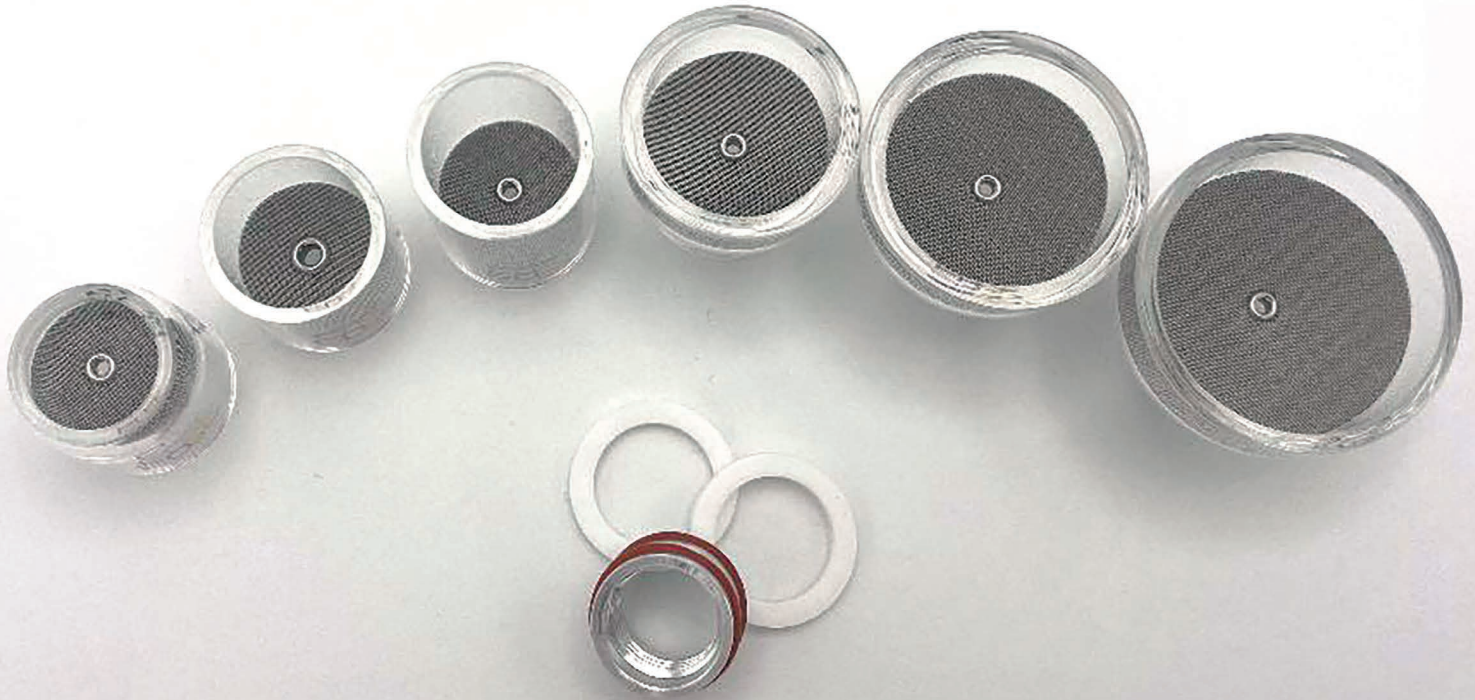
Includes EDGE Adapter with o-rings, Thermal Spacer, 2 EDGE Shorty Cups, 2 cups of the same size, with EDGE Diffusers (available in sizes 1/16, 3/32, 1/8, or 5/32)

EDGE Shorty Individual Cups

Available in 10, 12SS, 12S, 15, 18 and 21 with Diffusers (1/16, 3/32, 1/8 or 5/32)

EDGE 21 Ti Cup

The EDGE 21 cup was created because there was a call for a larger cup with the superior EDGE gas coverage, so we stepped up and introduced the 21. We created it for the titanium community, but we're not done yet. The titanium community has spoken and EDGE listened.



XL AND XXL Laminar Flow Series

The XL and XXL series cups utilize the elite design characteristics of the Laminar Flow series cups by giving optimum gas coverage, and giving you the diversity to extend your tungsten into a tight space without the concern for arc wander or flashing off the side of your part. The XL cup is 2 inches overall length and the XXL is 3 inches overall length but can be customized to your specifications.





EDGE XL Laminar Flow COMPLETE KIT

Includes EDGE Adapter with o-rings, 2 Thermal Spacers, 6 (4XL, 5XL, 6XL, 7XL, 8XL) EDGE Laminar Flow Cups with EDGE Diffusers (1/16, 3/32, 1/8, 5/32)



EDGE XXL Laminar Flow COMPLETE KIT

Includes EDGE Adapter with o-rings, 2 Thermal Spacers, 6 (4XXL, 5XXL, 6XXL, 7XXL, 8XXL) EDGE Laminar Flow Cups with EDGE Diffusers (1/16, 3/32, 1/8, 5/32)



EDGE Individual XL Cups

Available in 4XL, 5XL, 6XL, 7XL, 8XL with EDGE Diffusers (1/16, 3/32, 1/8, 5/32), 2" overall length



EDGE Individual XXL Cups

Available in 4XXL, 5XXL, 6XXL, 7XXL, 8XXL with EDGE Diffusers (1/16, 3/32, 1/8, 5/32), 3" overall length

EDGE Conversion Used for XL and XXL Series

The EDGE Conversion allows you to put your own kit together, purchase a complete kit or you can select a case on pages 20 and 2, being sure to select the 17, 18, 26 option, includes the EDGE Conversion in the Case.

DO I NEED IT?

If you have a WP17, WP18, WP26, W350, A-150, A-200, A-250, W-350, W-410, W-225 Modular, and W-500 Pencil Auto TIG torch, or similar that uses a 3 Series Gas Lens, pages 4-5. If you do, then you can take advantage of the EDGE conversion in order to use the short cups meant for the lower amperage torches.



WHAT IS IT?

Included: GL adapter, GL o-rings, 4 series (stubby gas lens and collet)

WHAT NOW?

After you purchase the EDGE conversion, you can then purchase any cup from the GL series cups, Pyrex and Quartz. All cups on pages 6-17, 20-21.



EDGE Narrow Series™

The EDGE Welding Cups, Narrow Series™ is essentially a #4 or #6 welding cup that we form into an oval. We also offer this in the XL and XXL sizes. The benefit of the narrow line is, its ability to reach into narrow passages or between tubes that are bent or fabricated at extremely tight angles to one another, and deliver the welding gas in a narrow path where it's needed.

The #12 Narrow with EDGE Diffuser for a great gas coverage tight spot application. It is a #6 on one side and a #12 on the other side. It started out as a custom, and we found it to be helpful time and time again in the industry, we then decided it needed to be a part of the edge inventory.



1 There isn't a need to use a monster cup to deliver mass amounts of gas for gas coverage because the Narrow Line cup reaches to the weld puddle.

2 The Narrow Line saves gas because the welder can focus the gas where it's needed, and not just flood of gas for overall coverage.

3 The surrounding metal stays cooler because the gas is focused where you need it. This will save you time, money, frustration and help give you a better reputation for quality over your competition.



EDGE 12 Narrow
With EDGE Diffuser (1/16, 3/32, 1/8, 5/32)



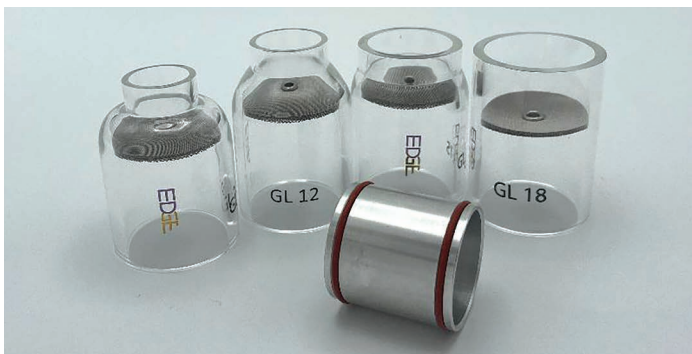
EDGE Large Diameter Series



Take the massive gas lens of a Large Diameter and couple it with the superior gas technology from EDGE and you've got a winner. The Large diameter series will go above and beyond your expectations to give you unbeatable coverage for your next job.

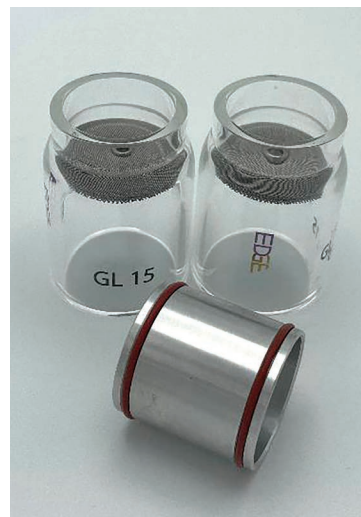
We give you the winning EDGE.

Available in EDGE Large Diameter #10LD, #12LD, #15LD, #18LD. Can be used on 9, 20 and 17, 18 torches



EDGE COMPLETE KIT

Includes EDGE Adapter with o-rings, Thermal Spacer, 4 (10,12,15,18) EDGE Large Diameter Cups with the EDGE Diffusers (1/16, 3/32, 1/8, 5/32)



EDGE Large Diameter Starter Kits

(available 10LD, 12D, 15D and 18D) Includes EDGE Adapter with o-rings, 2 Thermal Spacers, 2 EDGE Cups of same size



EDGE





EDGE Small Rectangle Case



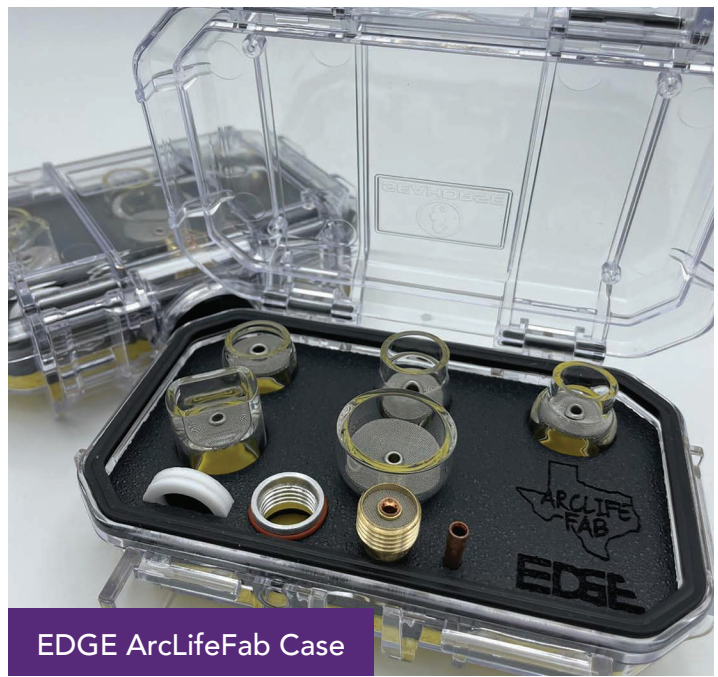
EDGE Zombie Case

EDGE GAS LENS CASES

A variety of sizes and styles of EDGE Cases. You can choose from cases that are unloaded to hold your existing EDGE Cups or cases that will hold anywhere from 5–35 cups with your gas lens, collets, adapters and thermal spacers. We offer them in black and clear and the EDGE Zombie MIG Nozzles is available in green.



EDGE ELITE & 35 Cup Case



EDGE ArcLifeFab Case



EDGE Square Case



EDGE Extra Large Rectangle Case



EDGE Elite Case

EDGE Tungsten Holders

The exclusive EDGE Clear Tungsten Holder keeps your material clean and organized, protects your meticulous sharpened tips, and lets you see immediately how many pieces you have left. They are made of thick wall, high quality, Pyrex glass and American machined components. The long comes with two 35lb magnet holders that can be attached to any steel work bench top, bottom, leg or toolbox, and will accommodate full length pieces. (7") The short holder will come with one 35lb magnetic clip and will hold half length. (3.5")



*tungsten not included



EDGE COLLET BODY 920 SERIES

EDGE Collet Body 920 Series fits the WP9, WP20, WP25 tig torch with collet body.

EDGE 920 welding cups are hand-made in the USA. Each cup is made out of laboratory-grade borosilicate glass, most commonly known as Pyrex.

EDGE Welding Cups are made to exacting standards and put through our quality-control system to ensure that every cup is made to fit right. Each cup is size labeled to ensure that the welder isn't wasting time trying to find the correct size cup. Every cup is oven heat treated to ensure that the life of the cup is maximized.

COLLET BODY QUARTZ "Q" SERIES

EDGE Welding Supply has developed a series of cups that are specifically designed for working aluminum, while using a collet body on your torch. The Q series for a collet body can handle whatever heat you throw at it. Take the EDGE advantage and use it for success.



EDGE Collet Body Q Series Cups

Available in 4, 5, 6, 7, and 8. Each with EDGE Diffusers available in (1/16, 3/32, 1/8 and 5/32. CB-Q6, 7, 8D).

EDGE Diffusers Install Tools

Make your diffuser installation quick and easy with the EDGE Diffuser Installation Tool. They are specifically designed to make installation fast and flawless. Available for Collet Body Cups 4, 5, 6, 7 and 8, in 4 tungsten sizes (1/16, 3/32, 1/8 and 5/32)



EDGE Collet Body Diffusers

Available in 1/16, 3/32, 1/8, and 5/32

EDGE Diffuser Install Tool Kit



COLLET BODY EDGE CONVERSION

The Collet Body EDGE Conversion is specifically for the WP17, WP18 or WP26 style torches, to replace the long bulky ceramic cups. The shorty (stubby) collet body utilizes the threads that adapt to the 17, 18, or 26 style torch, and the cup thread for the low amperage torches (9, 20, 25). The advantage to the shorty collet body is the utilization of shorter cups with the same amperage rating as the long cups. This allows you to fit your torch into smaller spaces and avoiding awkward angles as with the long cups. Once you purchase the Collet Body EDGE Conversion, you simply choose the CB920 cups (page 22–23) that work for your application.

EDGE Collet Body Conversion

Includes CB Adapter, o-rings and stubby collet body





EDGE COLLET BODY 1718 SERIES

EDGE Collet Body 1718 Series fits the WP17, WP18, WP26 tig torch with collet body.

EDGE Collet Body 1718 Series welding cups are hand-made in the USA. Each cup is made out of laboratory-grade borosilicate glass, most commonly known as Pyrex.

EDGE Welding Cups are made to exacting standards and put through our quality-control system to ensure that every cup is made to fit right. Each cup is size labeled to ensure that the welder isn't wasting time trying to find the correct size cup, and every cup is heat treated to ensure that the life of the cup is maximized.

EDGE





EDGE



QUARTZ MIG NOZZLES

EDGE Welding Supply Quartz MIG Nozzles are made with the purest of materials that are eco-friendly. We use the highest quality Quartz material available on the market from major manufacturers to ensure the highest quality welds. We have discovered that most weld spatter will not stick to Quartz making it user friendly and unnecessary to use anti spatter welding gel. Each nozzle is hand made with precision tolerances to ensure high quality fit for a precise weld.

Edge Mig Nozzles Offered for the Following Mig Diffusers and Nozzles, 4 Styles Available in 2 or 3 Sizes



EDGE MIG 15 Series Diffuser & Nozzle

Must be used with Diffuser 13002-DLT

For HTP and Everlast Machines using the 13002-DLT Diffusers, replacement nozzles 15105B and 15108B

Lincoln/Tweco 200A-250A
Used with Lincoln® Magnum
Or Tweco® No. 2 MIG gun

Use with 52 or
52-23 diffuser

EDGE Welding Supply©
High temperature Quartz
3 1/16" long (77.79mm)



.070 DIA
7/8"
1/2-13 THD



Original nozzle for
Reference only

32 series insulator

Available parts
22-37 Q 3/8"
22-50 Q 1/2"
22-62 Q 5/8"

EDGE MIG 22 Series Insulator & Nozzle

Must be used with nozzle insulator 32

If you use Nozzle Insulator 32 for Lincoln® Tweco® MIG
Welding Gun 200A – 250A

*34 insulator not available at this time

Available in 3 sizes: **M22-37 Q 3/8"**, **M22-50 Q 1/2"**,
M22-62 Q 5/8"

Lincoln Electric® Magnum 100L
Tweco® Mini-MIG-Gun
Up to 200A

EDGE Welding Supply©
High temperature Quartz
Nozzle 2 1/4" long



Gas diffuser
35-50, 51, 51-23



Original nozzle
For reference only

EDGE Welding Supply©
Brass adapter with
High temperature silicone
O-rings
(Part no. M21-A, M21-OR)

Available parts
21-37 Q 3/8"
21-50 Q 1/2"
21-62 Q 5/8"

EDGE MIG 21 Series Diffuser & Nozzle

Must be used with EDGE MIG 21 Series Adapter and 2
o-rings (M21-A, M21-OR)

If you use Tweco style Diffuser: 35-50, 51, 51-23

Premium quality Tweco® style: 35-50, 51, 51-23 gas diffuser.

- Accommodates MIG welding wire 0.023" (0.6mm).
- For use with thread-on nozzle assemblies with Tweco® No.1 series MIG welding gun in light to medium duty welding application up to 180 Amp.
- Also fits Lincoln® Magnum light-medium duty MIG guns; replacement for gas diffuser P/N: KP51.
- Works with 11 series contact tip.

Available in 3 sizes: **M21-37 Q 3/8"**, **M21-50 Q 1/2"**,
M21-62 Q 5/8"

Tweco® Spraymaster® 450A
Tweco® Spitfire 450A
with modified HD54-16 diffuser

Modified HD54-16 diffuser
With 2 O-ring grooves
To ensure a gas tight seal



EDGE Welding Supply©
High temperature Quartz
nozzle 3 1/4" long



Original nozzle
For reference only

Replacement high
Temperature silicone
O-rings

Available parts
24AH-50 Q 1/2"
24AH-62 Q 5/8"
24AH-75 Q 3/4"

EDGE MIG Zombie (Series 24) Diffuser & Nozzle

Must be used with the EDGE modified HD 54-16 Diffuser
and 2 o-rings

If you use this Diffuser
HD 54-16 (OEM HD54-16)

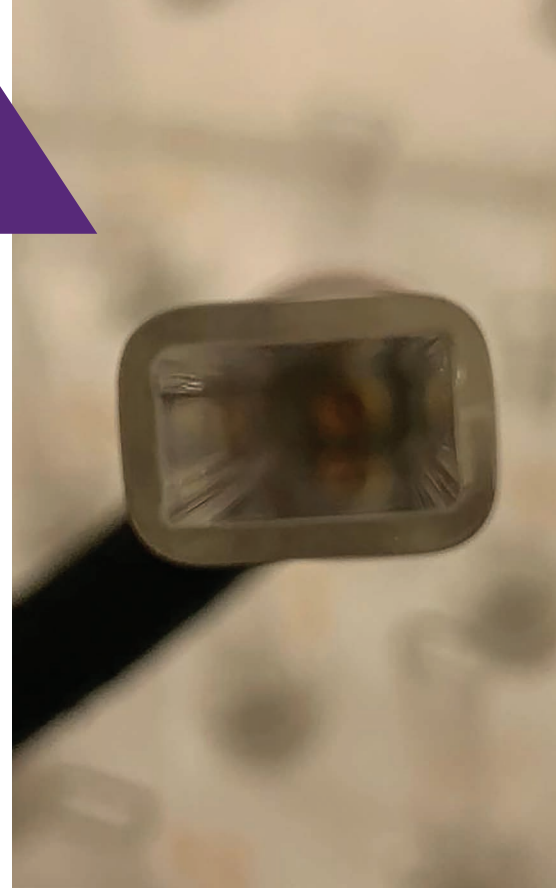
Alternate Part Numbers
RAD64002732,
PRSHD54-16, PXHD54-16,
1540-113

and you use this Nozzle
TWECO Style Welding 5/8
NOZZLE SLIP ON 24A62
Superior Consumables,
Brand Name Tweco,

Superior Part # TW24A62,
OEM 24A62, Alternate Part
Numbers – 1240-1120,
1240-1556, KP24A62,
RAD64002712, PRS24A-62,
BLU-MIGTW24A62, 24A-62,
PX24A62, C24A-62
available in 3 sizes
M24-AH50 Q 1/2"
M24AH-62 Q 5/8"
M24AH-75 Q 3/4"

EDGE CUSTOM CUPS

EDGE Welding Supply offers a full array of opportunities with our custom manufacturing shop. We have a over 50 years of scientific glass blowing experience available to our customers, and we can custom design and manufacture a cup at a fraction of the cost to have something manufactured in ceramic in our North Carolina facility to your specifications. We manufacture custom cups for numerous industries including Orbital, Nuclear, Aerospace, Military and a vast array of others. We can make cups longer, shorter, rectangle, square, and beveled. We're here to give you the performance EDGE for your customer.







Edge Welding Cups & Edge Welding Supply

706-C Performance Rd. • Mooresville, NC 28115

P: 704.663.0101 | F: 704.663.0004

Sales@EdgeWeldingSupply.com • EdgeWeldingSupply.com



Proudly Made in the USA



GET CONNECTED WITH US
FACEBOOK / INSTAGRAM / TWITTER / LINKEDIN / YOUTUBE / TIKTOK

