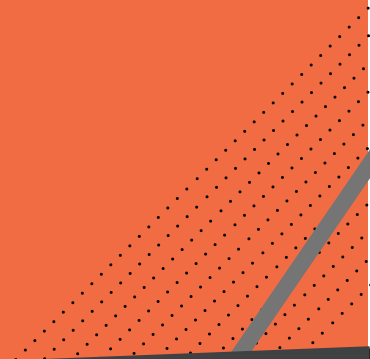




*PRI 2018 REFERENCE GUIDE*



# TABLE OF CONTENTS

*#ISpyMPI* 3, 5

*#MPIFamily* 4, 69

*Testimonials* 6

*2018 Highlights* 7

*About MPI* 8

*Steering Wheels* 10 - 55

*Anatomy of a Steering Wheel* 11

*#MPIDifference* 12 - 13

*Asphalt Circle Track* 14 - 23

*Dirt Track Racing* 24 - 31

*Off Road / Road Course* 32 - 45

*Formula / Off Road / UTV* 46 - 49

*Drag Racing* 50 - 51

*Steering Wheel Chart* 52 - 53

*Boat / Golf Cart Steering Wheel* 54 - 55

*Accessories* 56 - 63

*Hub Chart* 64 - 65

*Project U* 66 - 67

*Pricing Chart* 68

*Forever Our Champions* 70 - 71

*Contact Info* 72

# #ISPYMPI

## PROJECT U



#MPIFAMILY



**MPI**

### *NASCAR CUP SERIES*

2018 Joey Logano  
2017 Martin Truex Jr  
2016 Jimmie Johnson  
2015 Kyle Busch  
2014 Kevin Harvick

### *DAYTONA 500*

2018 Austin Dillon  
2017 Kurt Busch  
2016 Denny Hamlin  
2015 Joey Logano

### *XFINITY SERIES*

2018 Tyler Reddick  
2017 William Byron  
2016 Daniel Suarez  
2014 Chase Elliott

### *NASCAR TRUCKS*

2018 Brett Moffitt  
2017 Christopher Bell  
2016 Johnny Sauter  
2015 Erik Jones

### *NHRA*

2018 Tanner Gray

### *K&N PRO SERIES*

2018 Tyler Ankrum  
2017 Harrison Burton  
2017 Todd Gilliland  
2016 Justin Haley  
2015 William Byron

### *CARS TOUR*

2018 Bobby McCarty  
2018 Jared Fryar  
2017 Cole Rouse  
2017 Josh Berry  
2016 Raphael Lessard  
2016 Deac McCaskill  
2015 Cole Timm  
2015 Brayton Haws

### *WOD SPRINT CARS*

2015, 2016, 2017, 2018 Donny Schatz

### *KNOXVILLE NATIONALS*

2017 & 2015 Donny Schatz  
2016 Jason Johnson

### *LUCAS OIL LATE MODELS*

2018 Jonathan Davenport

### *SNOWBALL DERBY*

2017 Kyle Busch  
2016 Christian Eckes  
2015 Chase Elliott  
2014 John Hunter Nemechek

### *NASCAR REGIONAL SERIES*

2018 Justin Bonsignore  
2017 & 2016 Doug Coby

### *WORLD SHORT TRACK*

2018 Nick Hoffman  
2017 Kyle Strickler

### *WHELEN ALL-AMERICAN*

2018 Philip Morris  
2017 & 2015 Lee Pulliam  
2016 Matt Bowling

### *LUCAS OIL OFF ROAD*

2018 RJ Anderson  
2017 Jeremy McGrath

### *LUCAS OIL OFF ROAD PRO 1000 UTV*

2018 & 2017 Brock Heger

# #ISPYMPI

## *MPI Champions List*

### *F4 UNITED STATES*

2018 Dakota Dickerson  
2017 Kyle Kirkwood

### *MAZDA GLOBAL MX-5 CUP*

2018 Nikko Reger  
2017 Patrick Gallagher

### *USAC SPRINT CAR*

2018 Tyler Courtney  
2017 Chris Windom

### *USAC MIDGET*

2018 Logan Seavey  
2017 Spencer Bayston

### *GHILLI BOWL*

2018 Christopher Bell

### *POWRI MIDGET*

2018 Tucker Klaasmeyer  
2017 Logan Seavey



 **JIMMIE JOHNSON** *7-Time Monster Energy NASCAR Cup Series Champion*

“The quality, attention to details, light weight, comfort and time spent on the safety R&D have been the qualities that I admired in the MPI steering wheel and the reason why I trust them for my racing.”

 **JOHN HUNTER NEMECHECK** *NASCAR Xfinity Series Winner*

“I trust MPI steering wheels because of their quality, comfort, and dedication of time to make a safe, yet light weight steering wheel.”

 **RYAN PREECE** *2013 Whelen Modified Tour Champion*

“For years I’ve been looking for a steering wheel that fits my needs, and MPI wheels do that and so much more. It’s great to have them be a huge part in getting to victory lane.”

 **DANIEL HEMRIC** *Legends Million Winner, NASCAR Xfinity Series Driver*

“As a driver, holding a steering wheel is your way of life. That’s why I only choose the best to hold, MPI.”



# 2018 MPI HIGHLIGHTS



**DONNY SCHATZ**  
*WoD Sprint Car Champion*



**CHRISTOPHER BELL**  
*Chili Bowl Champion*



**JONATHAN DAVENPORT**  
*Lucas Oil Late Model Champion*



**TANNER GRAY**  
*NHRA Pro Stock Champion*

# ABOUT MPI

MPI stands for Max Papis Innovations and was founded in 2009 by Max Papis and Tatiana Fittipaldi Papis in Mooresville, NC.

Max is currently the European driver with the most NASCAR starts and has driven and worked in almost all forms of the motor racing world; Karting, F1, CART, Indycar, NASCAR, Sports-Car, amongst others. He is regarded as being one of the pioneers in the sport in improving overall ergonomic characteristics of the interior of any car he's driven, focusing his attention on stock cars since being involved in the COT development with Hendrick Motorsports in 2005.



Tati was born into racing with parents Emerson and Maria Helena Fittipaldi. She has a bachelor's degree in Advertising and Psychology and a minor in Marketing from the University of Miami. She is a proud member of the North Carolina Motorsports Advisory Council. Max, Tatiana, and their two sons, Marco and Matteo, live in Mooresville, NC.

All MPI wheels are designed and engineered in the USA and are built in Italy using the latest steering wheel technology and state of the art materials. MPI prides itself on several wins in NASCAR Cup, Xfinity & Truck Series, Late Models, Legends, and local races. In 2014, MPI won its first NASCAR Sprint Cup Series Championship with Kevin Harvick and Stewart Haas Racing, as well as its first Xfinity Series Championship with Chase Elliott and JR Motorsports.



# *SHAPED BY A RACER, FOR THE BEST RACERS*

Max's attention to detail and safety, his passion for motorsports, and never forgetting his "grass root" career start has translated into a unique **state of the art** concept that is in all MPI products at feasible price points, targeted towards the budgets of racers around the globe.

At MPI, we take every aspect of construction and safety to our hearts, in the most accurate and dedicated way possible. To be **innovative**, we push the technology of our steering wheels to the limits, while still maintaining the highest level of safety.

Before becoming an MPI product, our structures need to pass our internal quality controls tests. Amongst the many test is a "torque structural steering wheel test" that is considered one of the most severe on the "road car" market. Another is a "stress test" to see what our steering wheel does when load is applied to it, simulating what happens when a driver's hands are kept on the steering wheel during a severe impact.

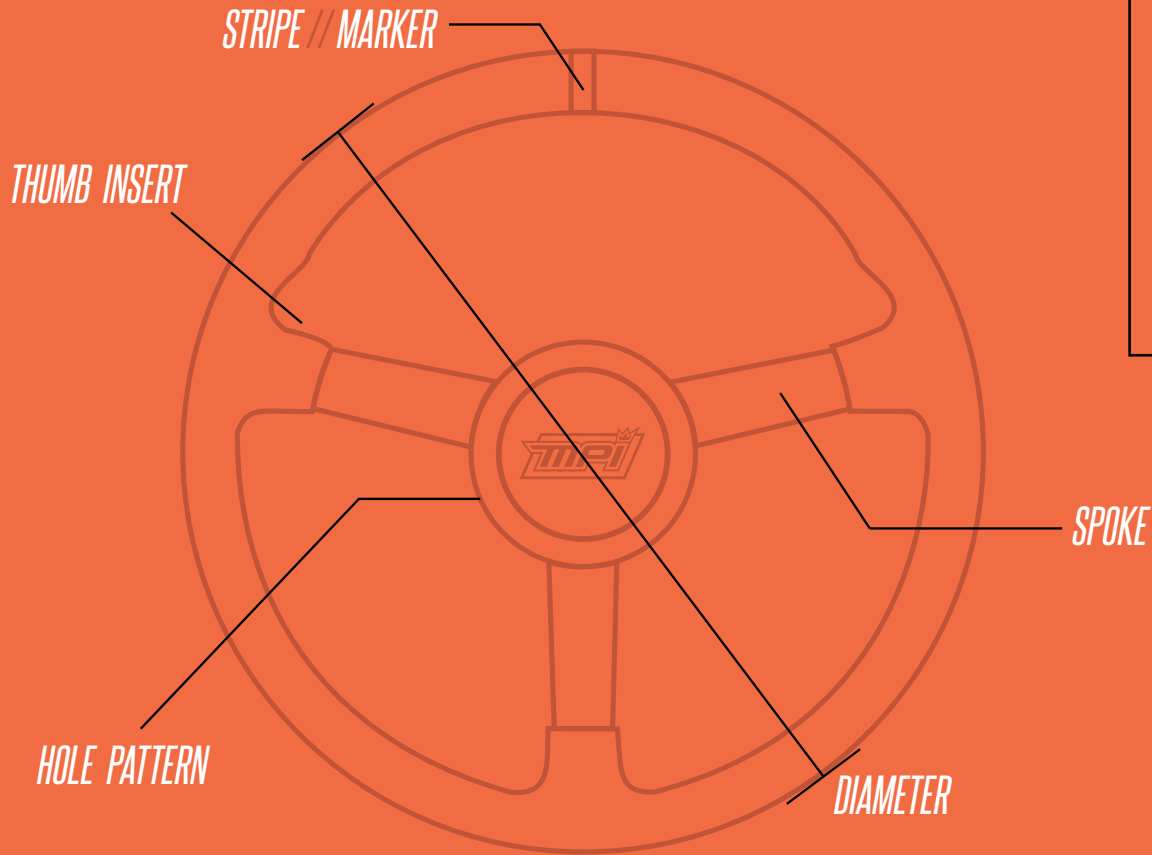
We know that to produce the **best product** on the market and be **innovative**, we can not cut any corners. Like our founder **Max Papis**, we are true to our values and pride ourselves in selling **excellence** and not just another story.

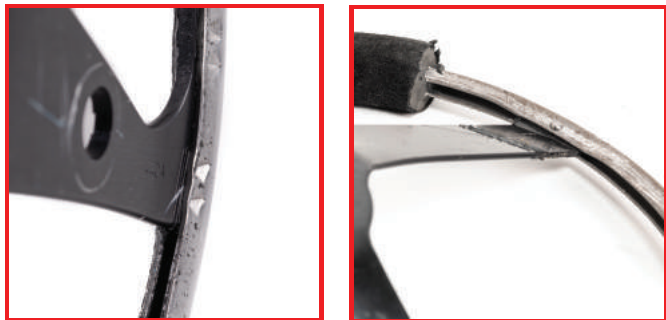


# *STEERING WHEELS*



# *ANATOMY — OF A — STEERING WHEEL*





*THE OTHER BRANDS*

 ***2 Rivets***

 ***U-Channel***

 ***Winged Spoke***

 ***Technology developed to increase **safety*****

 ***Hand applied rivets***

 ***No welding point between spoke and U-Channel***

# *#MPIIDIFFERENCE*

## *STEERING WHEEL STRUCTURE*





**OLD STYLE ROUND GRIP**



**MPI U-CHANNEL**

# #MPIIDIFFERENCE

## GRIP AND COMFORT

 **AMST** =  **-Vibration**  
Advanced Mold Shaping Technology =  **+Feeling**



**SUEDE**



**POLYURETHANE**



**HIGH GRIP**

 **All suede & grip applied by hand in Italy**

 **Best quality of suede**

 **Grip tested & approved by the best racers**





"I've had the opportunity to use MPI steering wheels this season and the quality is one of a kind. The time and effort that goes into their wheels are second to none along with the continued effort to make things even better."

**-CHASE ELLIOTT**

2016 NASCAR Cup Series Rookie Of The Year  
2014 Xfinity Series Champion

# ***-KEVIN HARVICK***

*2014 NASCAR Cup Series Champion  
2018 NASCAR All-Star Race Winner*



**“MPI has gone out of their way to create a wheel that feels comfortable to me. Along with comfort, it looks great, is extremely light, and most importantly safe!”**



# MPI-MP-14/15/16-0E

👑 4x NASCAR Cup Series Champions

👑 3x Daytona 500 Champions

*Stock Car Concept Specific*

**\$399**

- Steel structure
- Industry's lightest & most used stock car steering wheel
- Diameter: 14" / 15" / 16"
- Oval / Ergonomic grip with thumb insert
- Bright orange stripe/marker embedded in steering wheel body
- CNC machined spokes
- Double rivets & U-Channel for increased safety
- Hole pattern: 3 holes
- Lightweight centerpiece included





# MPI-MP-14/15/16-0

*Stock Car Concept Specific*

**\$399**

- Steel structure
- Industry's lightest & most used stock car steering wheel
- Diameter: 14" / 15" / 16"
- Round grip
- Bright orange stripe/marker embedded in steering wheel body
- CNC machined spokes
- Double rivets & U-Channel for increased safety
- Hole pattern: 3 holes
- Lightweight centerpiece included



# MPI-DP-13

*Lightest 13" steel stock car steering wheel*

*Stock Car Concept Specific*

**\$399**

- Steel structure  
(only 13" available on market)
- Industry's lightest steel stock car steering wheel
- Oval grip
- Bright orange stripe/marker embedded in steering wheel body
- CNC machined spokes
- Double rivets & U-Channel for increased safety
- Hole pattern: 3 holes
- Lightweight centerpiece included



# MPI-MP2-14/15

*Stock Car Concept Specific*

**\$499**

- Steel structure
- Diameter: 14" & 15"
- Oval grip
- Bright orange stripe/marker embedded in steering wheel body
- Unique shape for increased leg room & dash visibility
- Double rivets & U-Channel for increased safety
- Hole pattern: 3 holes
- Lightweight centerpiece included

- 👑 *D-shaped to increase leg room & dashboard visibility*
- 👑 *Unique stock car steering wheel*



# MPI-LM-15-A

 *2x Snowball Derby Champion*

*Stock Car Concept Specific*

**\$299**

- Aluminum structure
- Diameter: 15"
- Oval grip
- Bright orange stripe/marker embedded in steering wheel body
- Double rivets & U-Channel for increased safety
- Hole pattern: 3 holes
- Slotted spoke for maximum weight reduction
- Lightweight centerpiece included



# MPI-LM-15/16

 3x NASCAR Whelen All American Champion

*Stock Car Concept Specific*

**\$299**

- Steel structure
- Diameter: 15" & 16"
- Oval grip
- Bright orange stripe/marker embedded in steering wheel body
- Double rivets & U-Channel for increase safety
- Hole pattern: 3 holes
- Lightweight centerpiece included



# MPI-BL-14-A/PA

*Bandolero / Legends Concept Specific*

👑 *Snowball Derby Champion*  
👑 *Legends Car Nationals Champion*

• Aluminum structure

**\$199 / \$139**

• Diameter: 14"

• Bright orange stripe/marker embedded in steering wheel body

• MPI-BL-14-A: Highest quality suede with parallel orange stitching

• MPI-BL-14-PA: Polyurethane only grip, dirt-friendly/washable

• Double rivets & U-Channel for increased safety

• Slotted spoke for maximum weight reduction

• Hole pattern: 3 holes

• Centerpiece sold separately - \$40\*

\*If bought with steering wheel: MPI-BL-14-A: \$239 MPI-BL-14-PA: \$179



**MPI-BL-14-A**  
**\$199**



**MPI-BL-14-PA**  
**\$139**

*SUEDE*



*POLY GRIP*



# MPI-KQS/KQR-11

Quarter Midget Concept Specific

• Aluminum structure

**\$189 / \$159**

• Diameter: 11"

• Dirt-friendly/washable

• MPI-KQS-11: Square structure, flat top for improved visibility, flat bottom for easy entry

• MPI-KQR-11: Round structure

• Covered in 3 different materials: Lederfylon high-grip, orange synthetic, carbon synthetic

• Slotted spoke for maximum weight reduction

• Hole pattern: 3 holes

• Centerpiece included



**MPI-KQS-11**  
**\$189**



**MPI-KQR-11**  
**\$159**





“MPI has revolutionized the dirt racing world with its new D-15 wheel. It has great feel, awesome looks, and is definitely the safest wheel on the market. It has given me front end feel like never before!”

***-DONNY SCHATZ***

*10-Time World of Outlaws Champion  
10-Time Knoxville Nationals Champion*





“Driver comfort and driver safety are the two most important aspects of a winning race car. MPI steering wheels deliver both of those key elements along with the added advantages of being light weight and durable. That’s why it’s a no-brainer for me to use the MPI-DM-15 wheel in every car I race.”



***-KYLE STRICKLER***

*2015 IMCA Boone Supernationals Champion*

# MPI-DM2-15

👑 DIRTcar UMP Modifieds Champion  
👑 UMP ONEDIRT World Short Track Champion

*Sprint Car / Dirt Late Model Concept Specific*

**\$249**

- Aluminum structure
- Diameter: 15"
- Dirt-friendly/washable
- Dirt-style finger bumps/indentations on entire steering wheel back
- Double rivets & U-Channel for increased safety
- Extended padding on spokes for increased protection
- Black anodized slotted spokes for maximum weight reduction
- Hole pattern: 3 holes
- Centerpiece included



# MPI-D2-15

👑 3x Knoxville Nationals Champion

👑 4x World of Outlaws Sprint Car Champion

*Sprint Car / Dirt Late Model Concept Specific*

**\$249**

- Aluminum structure
- Diameter: 15"
- Dirt-friendly/washable with zero dish
- Dirt-style finger bumps/indentations on entire steering wheel back
- Double rivets & U-Channel for increased safety
- Extended padding on spokes for increased protection
- Black anodized slotted spokes with Secondary Post Machining
- Hole pattern: 3 holes
- New light weight centerpiece included



# MPI-DMR-15/16/17

*Sprint Car / Dirt Late Model Concept Specific*

**\$129**

- Aluminum structure
- Diameter: 15" / 16" / 17"
- Dirt-friendly/washable
- Dirt-style finger bumps/indentations on entire steering wheel back
- Extended padding on spokes for increased protection
- Double rivets & U-Channel for increased safety
- Hole pattern: 3+3 holes  
(fits all US 3 bolts quick release)

*👑 2018 Lucas Oil Late Model Champions with Jonathan Davenport*

*👑 Same safety, R&D developed for Outlaws Champion*



# MPI-DR-15/16/17

*Sprint Car / Dirt Late Model Concept Specific*

**\$129**

- Aluminum structure
- Diameter: 15" / 16" / 17"
- Dirt-friendly/washable
- Dirt-style finger bumps/indentations on entire steering wheel back
- Extended padding on spokes for increased protection
- Double rivets & U-Channel for increased safety
- Hole pattern: 3+3 holes  
(fits all US 3 bolts quick release)



# MPI-KD-13/14

*Dirt Karting Concept Specific*

**\$199**

- Aluminum structure
- Diameter: 13" & 14"
- Dirt-friendly/washable
- Covered in 3 different synthetic materials:  
Lederfylon high-grip, orange synthetic,  
carbon synthetic
- Flat top for improved visibility
- Proprietary vibration absorbing foam
- Hole pattern: 3 holes



# MPI-KMD-15

*Micro Sprint Concept Specific*

**\$189**

- Aluminum structure
- Hole pattern: 3 Hole (NASCAR style)
- Dirt-friendly/washable
- Covered in 3 different synthetic materials:  
Lederfylon high-grip, orange synthetic,  
carbon synthetic
- Hand sewn crossed orange stitching for unique  
look/durability
- Proprietary vibration absorbing foam
- Slotted spoke for max weight reduction
- Steering wheel for Micro Sprint, Dirt GoKart usage
- Centerpad not included



# ***-HARLEY LETNER***

*Parker 400, Mint 400, Baja 500 Champion*

“Best steering wheel I’ve ever wrapped my hands around. It feels like it was made for my hands! Not only is it the most comfortable and safest wheel I’ve ever used, it’s also the coolest looking...it’s orange!”







**ANDY MCMILLIN**  
MPI-F-14-2B

**JEREMY MCGROPH**  
MPI-F-14-A



**BROCK HEGER**  
MPI-F-13-A



**JEFF PROCTOR**  
MPI-F-14-A

# MPI-DO-14-C/B

Off Road / SxS / Drifting / Track Days Concept Specific

- Aluminum structure
- Diameter: 14"
- Double rivets & U-Channel for increased safety
- Highest quality suede
- MPI-DO-14-C: orange stitching and marker
- MPI-DO-14-C-B: black stitching and marker
- Slotted spoke for maximum weight reduction
- Hole pattern: 6 holes
- Center hole cover included

**\$219**



**MPI-DO-14-C**  
**\$219**

**MPI-DO-14-C**



**MPI-DO-14-C-B**  
**\$219**



# MPI-DO-14-C-HG/HG-B

Off Road / SXS / Drifiting / Track Days Concept Specific

- Aluminum structure
- Diameter: 14"
- Double rivets & U-Channel for increased safety
- Black high grip material
- MPI-DO-14-C-HG: orange stitching and marker
- MPI-DO-14-C-HG-B: black stitching and marker
- Slotted spoke for maximum weight reduction
- Hole pattern: 6 holes
- Center hole cover included

**\$219**



**MPI-DO-14-C-HG**  
**\$219**

**MPI-DO-14-C-HG**



**MPI-DO-14-C-HG-B**  
**\$219**



# MPI-DO-H60-A

*Off Road / SXS / Drifting / Track Days Concept Specific*

**\$219**

- Aluminum structure
- Diameter: 14"
- Double rivets & U-Channel for increased safety
- Highest quality suede
- Parallel orange stitching & orange marker
- Hole pattern: 6 holes
- Center hole cover included



# MPI-DO-H60-HG

*Off Road / SXS / Drifting / Track Days Concept Specific*

**\$219**

- Aluminum structure
- Diameter: 14"
- Double rivets & U-Channel for increased safety
- Black high grip material
- Crossed orange stitching & orange marker
- Hole pattern: 6 holes
- Center hole cover included



# MPI-F-14-C/B

Touring Car / GT / Off Road / SKS / Drifting / Track Days Concept Specific

- Aluminum structure
- Diameter: 14"
- Oval/extreme ergonomic grip
- Double rivets & U-Channel for increased safety
- MPI-F-14-C: orange parallel stitching & orange marker
- MPI-F-14-C-B: black parallel stitching & black marker
- Highest quality suede
- Hole pattern: 6 holes
- Center hole cover included

**\$199**



**MPI-F-14-C**  
**\$199**



**MPI-F-14-C-B**  
**\$199**

MPI-F-14-C



# MPI-F-14-C-HG/HG-B

Off Road / SXS / Tuning / After Market Concept Specific

**\$199**

- Aluminum structure
- Diameter: 14"
- MPI-F-14-C-HG: Off Road/SXS concept specific, crossed orange stitching & orange marker
- MPI-F-14-C-HG-B: Off Road/SXS/Tuning/After Market concept specific, crossed black stitching & black marker
- Oval/extreme ergonomic grip
- Double rivets & U-Channel for increased safety
- Hole pattern: 6 holes
- Center hole cover included



**MPI-F-14-C-HG**  
**\$199**



**MPI-F-14-C-HG-B**  
**\$199**

**MPI-F-14-C-HG**



**MPI-F-14-C-HG-B**



# MPI-F-14-2B

*Off Road / SXS / Track Days Concept Specific*

**\$299**

- Aluminum structure
- Diameter: 14"
- Off Road/SXS/Track Days concept specific
- 2 fully wired APEM IP67 spec switches
- Oval/extreme ergonomic grip
- Double rivets & reinforced U-Channel for increased safety
- Highest quality suede
- Parallel orange stitching and orange marker
- Hole pattern: 6 holes





# MPI-F-14-2B-HG

Off Road / SXS / Track Days Concept Specific

**\$299**

- Aluminum structure
- Diameter: 14"
- 2 fully wired APEM IP67 spec switches
- Oval/extreme ergonomic grip
- Double rivets & reinforced U-Channel for increased safety
- Black high grip material
- Crossed orange stitching and orange marker
- Hole pattern: 6 holes



# MPI-F-13-C/HG

Touring Car / GT / Off Road / SXS / Drifting / Track Days Concept Specific

**\$199**

- Aluminum structure
- Diameter: 13"
- MPI-F-13-C: Touring Car/GT/Off Road/SXS/Drifting/Track Days concept specific, black suede, parallel orange stitching and orange marker
- MPI-F-13-C-HG: Off Road/SXS concept specific, black high grip material, crossed orange stitching and orange marker
- Oval/extreme ergonomic grip
- Double rivets & U-Channel for increased safety
- Hole pattern: 6 holes
- Center hole cover included



**MPI-F-13-C**  
**\$199**



**MPI-F-13-C-HG**  
**\$199**

**MPI-F-13-C**



**MPI-F-13-C-HG**



# MPI-F-13-CUT

*Touring Car / GT / Track Days Concept Specific*

**\$229**

- Aluminum structure
- Diameter: 13"
- Oval/xtreme ergonomic grip
- Steering wheel cut on top for improved dashboard visibility
- Double rivets & U-Channel for increased safety
- Parallel orange stitching
- Highest quality suede
- Hole pattern: 6 holes
- Center hole cover included



# MPI-LM-15-6BLT

*Off Road Concept Specific*

**\$299**

- Steel structure
- Diameter: 15"
- Oval/Ergonomic grip
- Bright orange stripe/marker embedded in steering wheel body
- Highest quality suede
- European 6 bolt hole pattern
- Dish depth: 3.25 inches
- Weight: 3.4 lbs



# MPI-KP-12/13

*Karting / Quarter Midget / Mini Outlaw Concept Specific*

**\$199**

- Aluminum structure
- Diameter: 12" & 13"
- Dirt-friendly/washable
- Slotted spoke for reduced weight
- Covered in 3 different synthetic materials: Lederfylon high-grip, orange synthetic, carbon synthetic
- Flat top for improved visibility
- Flat bottom for easy entry
- Hole pattern: 3 holes





2018 IndyCar

Champion

SCOTT   
DIXON



Official  
Steering Wheel

Supercars Australia  
DJR Team Penske



# MPI-GT-13-C/HG

*GT / Touring Concept Specific*

**\$219**

- Aluminum structure
- Diameter: 13"
- Oval/extreme ergonomic grip
- Double rivets & U-Channel for increased safety
- D-shaped steering wheel
- MPI-GT-13-C: Black suede, crossed orange stitching and orange marker
- MPI-GT-13-C-HG: Black high grip material, crossed orange stitching and orange marker
- Hole pattern: 6 holes
- Center hole cover included



**MPI-GT-13-C-HG**  
**\$219**

**MPI-GT-13-C**  
**\$219**



**MPI-GT-13-C**



**MPI-GT-13-C-HG**





# MPI-GT-11/CUT

Formula / Track Days Concept Specific

- Aluminum structure **\$199 / \$219**
- Highest quality suede
- Oval/extreme ergonomic grip
- Full face steering wheel
- Double rivets & U-Channel for increased safety
- Flat bottom for easy entry/exit of the car
- MPI-GT-11: D-shaped steering wheel, 3 hole pattern
- MPI-GT-11-Cut: Cut top for improved dashboard visibility



**MPI-GT-11**  
**\$199**



**MPI-GT-11-CUT**  
**\$219**

**MPI-GT-11**



**MPI-GT-11-Cut**

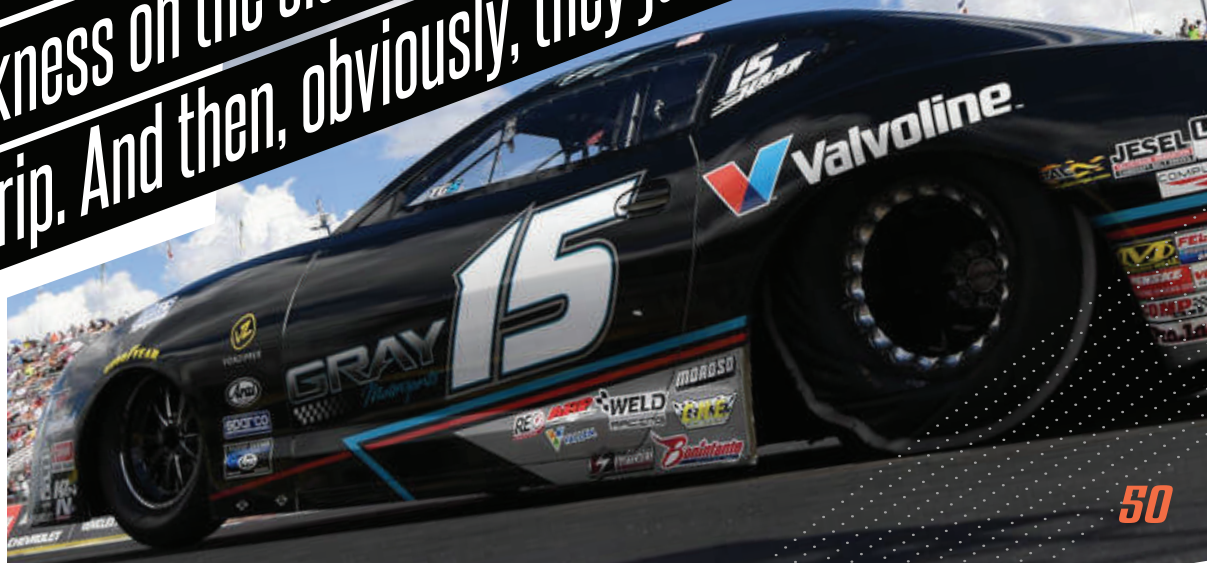




“The MPI wheel makes me more comfortable in the car with how it’s set up. I love the fact that you can move the buttons pretty much anywhere you want on it. The thickness on the sides gives me a smoother feel and more comfortable grip. And then, obviously, they just look good.”

***-TANNER GRAY***

*Youngest National Event Winner in NHRA History  
2017 Auto Club Road to the Future Award Winner*



# MPI-DRG-12/13

*Pro Stock / Drag Racing Concept Specific*

**\$249**

- Aluminum structure
- Diameter: 12" & 13"
- Special ergonomic polyurethane grip
- Multiple pre-drilled switch holes
- Highest quality suede
- Crossed orange stitching & orange marker
- Hole pattern: 5 holes



# MPI STEERING WHEEL SIZE CHART

<i>Steering Wheel</i>	<i>Diameter</i>	<i>Avg. Weight</i>	<i>Dish Depth</i>	<i>Hole Pattern</i>	<i>Includes</i>
<i>MPI-MP-14-0E</i>	<i>14"</i>	<i>2.4 lbs</i>	<i>3"</i>	<i>3 (USA type)</i>	<i>Centerpad</i>
<i>MPI-MP-15-0E</i>	<i>15"</i>	<i>2.5 lbs</i>	<i>3.25"</i>	<i>3 (USA type)</i>	<i>Centerpad</i>
<i>MPI-MP-16-0E</i>	<i>16"</i>	<i>2.8 lbs</i>	<i>3.5"</i>	<i>3 (USA type)</i>	<i>Centerpad</i>
<i>MPI-MP-14-0</i>	<i>14"</i>	<i>2.4 lbs</i>	<i>3"</i>	<i>3 (USA type)</i>	<i>Centerpad</i>
<i>MPI-MP-15-0</i>	<i>15"</i>	<i>2.5 lbs</i>	<i>3.25"</i>	<i>3 (USA type)</i>	<i>Centerpad</i>
<i>MPI-MP-16-0</i>	<i>16"</i>	<i>2.8 lbs</i>	<i>3.5"</i>	<i>3 (USA type)</i>	<i>Centerpad</i>
<i>MPI-DP-13</i>	<i>13"</i>	<i>2.2 lbs</i>	<i>3"</i>	<i>3 (USA type)</i>	<i>Centerpad</i>
<i>MPI-MP2-14</i>	<i>14"</i>	<i>2.2 lbs</i>	<i>3"</i>	<i>3 (USA type)</i>	<i>Centerpad</i>
<i>MPI-MP2-15</i>	<i>15"</i>	<i>2.4 lbs</i>	<i>3"</i>	<i>3 (USA type)</i>	<i>Centerpad</i>
<i>MPI-LM-15-A</i>	<i>15"</i>	<i>2.0 lbs</i>	<i>3.25"</i>	<i>3 (USA type)</i>	<i>Centerpad</i>
<i>MPI-LM-15</i>	<i>15"</i>	<i>3.4 lbs</i>	<i>3.25"</i>	<i>3 (USA type)</i>	<i>Centerpad</i>
<i>MPI-BL-14 (ALL)</i>	<i>14"</i>	<i>2.2 lbs</i>	<i>3.5"</i>	<i>3 (USA type)</i>	<i>-</i>
<i>MPI-KQS-11</i>	<i>11"</i>	<i>0.92 lbs</i>	<i>1.25"</i>	<i>3 (1/4 Midget)</i>	<i>Centerpad</i>
<i>MPI-KQR-11</i>	<i>11"</i>	<i>0.92 lbs</i>	<i>1.25"</i>	<i>3 (1/4 Midget)</i>	<i>Centerpad</i>
<i>MPI-DM2-15</i>	<i>15"</i>	<i>2.0 lbs</i>	<i>2.25"</i>	<i>3 (USA type)</i>	<i>Centerpad</i>
<i>MPI-D2-15</i>	<i>15"</i>	<i>2.0 lbs</i>	<i>-</i>	<i>3 (USA type)</i>	<i>Centerpad</i>
<i>MPI-DMR-15</i>	<i>15"</i>	<i>2.5 lbs</i>	<i>2.16"</i>	<i>3+3 (USA type)</i>	<i>-</i>
<i>MPI-DMR-16</i>	<i>16"</i>	<i>2.8 lbs</i>	<i>2.16"</i>	<i>3+3 (USA type)</i>	<i>-</i>

<i>Steering Wheel</i>	<i>Diameter</i>	<i>Avg. Weight</i>	<i>Dish Depth</i>	<i>Hole Pattern</i>	<i>Includes</i>
<i>MPI-DMR-17</i>	<i>17"</i>	<i>3.0 lbs</i>	<i>1.96"</i>	<i>3+3 (USA type)</i>	<i>-</i>
<i>MPI-DR-15</i>	<i>15"</i>	<i>2.6 lbs</i>	<i>-</i>	<i>3+3 (USA type)</i>	<i>-</i>
<i>MPI-DR-16</i>	<i>16"</i>	<i>2.9 lbs</i>	<i>-</i>	<i>3+3 (USA type)</i>	<i>-</i>
<i>MPI-DR-17</i>	<i>17"</i>	<i>3.1 lbs</i>	<i>-</i>	<i>3+3 (USA type)</i>	<i>-</i>
<i>MPI-KD-13</i>	<i>13"</i>	<i>1.0 lb</i>	<i>2"</i>	<i>3 (USA type)</i>	<i>Centerpad</i>
<i>MPI-KD-14</i>	<i>14"</i>	<i>1.0 lb</i>	<i>2"</i>	<i>3 (USA type)</i>	<i>Centerpad</i>
<i>MPI-KMD-15</i>	<i>15"</i>	<i>1.2 lbs</i>	<i>2.25"</i>	<i>3 (USA type)</i>	<i>-</i>
<i>MPI-KP-12</i>	<i>12"</i>	<i>1.0 lb</i>	<i>2"</i>	<i>3 (GoKart type)</i>	<i>-</i>
<i>MPI-KP-13</i>	<i>13"</i>	<i>1.0 lb</i>	<i>2"</i>	<i>3 (GoKart type)</i>	<i>-</i>
<i>MPI-DO-14 (ALL)</i>	<i>14"</i>	<i>2.2 lbs</i>	<i>3.25"</i>	<i>6 (European)</i>	<i>Center Hole Cover</i>
<i>MPI-DO-H60 (ALL)</i>	<i>14"</i>	<i>2.5 lbs</i>	<i>1.25"</i>	<i>6 (European)</i>	<i>Center Hole Cover</i>
<i>MPI-F-14 (ALL)</i>	<i>14"</i>	<i>1.25 lbs</i>	<i>1.25"</i>	<i>6 (European)</i>	<i>Center Hole Cover</i>
<i>MPI-F-14-2B (ALL)</i>	<i>14"</i>	<i>2.5 lbs</i>	<i>1.25"</i>	<i>6 (European)</i>	<i>-</i>
<i>MPI-F-13 (ALL)</i>	<i>13"</i>	<i>1.15 lbs</i>	<i>1.25"</i>	<i>6 (European)</i>	<i>Center Hole Cover</i>
<i>MPI-F-13-CUT</i>	<i>13"</i>	<i>1.5 lbs</i>	<i>-</i>	<i>6 (European)</i>	<i>Center Hole Cover</i>
<i>MPI-GT-13 (ALL)</i>	<i>13"</i>	<i>2.0 lbs</i>	<i>-</i>	<i>6 (European)</i>	<i>Center Hole Cover</i>
<i>MPI-GT-11-A</i>	<i>11"</i>	<i>1.25 lbs // 567 g</i>	<i>-</i>	<i>3 (European)</i>	<i>-</i>
<i>MPI-GT-11-CUT</i>	<i>11"</i>	<i>0.87 lbs // 395 g</i>	<i>-</i>	<i>3 (1/4 Midget)</i>	<i>-</i>
<i>MPI-DRG-12</i>	<i>12"</i>	<i>1.0 lb</i>	<i>-</i>	<i>5</i>	<i>-</i>
<i>MPI-DRG-13</i>	<i>13"</i>	<i>1.16 lbs</i>	<i>-</i>	<i>5</i>	<i>-</i>

# MPI OVALE

*Boat & Golf Cart Steering Wheel*

**\$129**

- Diameter: 13.75"
- 2.7 lbs
- Available in white or black
- Silver anodized spokes
- Polyurethane grip
- European 6 bolt hole pattern
- Made in Italy
- MPI polyurethane center cap included



# MPI CORSA

*Boat & Golf Cart Steering Wheel*

**\$179**

- Diameter: 13.5"
- 2.85 lbs
- Available in 8 different colors
- Silver anodized spokes
- Polyurethane grip
- European 6 bolt hole pattern
- Made in Italy
- Comes with chrome MPI billet center cap



# ACCESSORIES





**MPI-A-CP-MPLM** **\$40**

Suede centerpiece for  
"MPI-MP" and  
"MPI-LM" models



**\$40** **MPI-A-CP-BLDO**

Suede centerpiece for  
"MPI-BL" and  
"MPI-DO" models



**MPI-A-CP-D/DM** **\$20**

Polyurethane centerpiece for  
"MPI-D" and  
"MPI-DM" models



## ***MPI-A-SBH***

***\$25***

### Single Button Holder



- Made from aircraft aluminum
- Anodized with MPI logo
- Made in the USA

***\$35***

## ***MPI-A-DBH***

### Double Button Holder



## ***MPI-HB-SXS-1***

***\$49***

### 6 Bolt Steering Wheel Hub

- Fits all MPI 6 bolt steering wheels
- Works for Polaris, Textron Off Road, Can-Am



***\$29***

## ***MPI-A-CP-F***

### Centerpad for MPI-F Steering



## ***MPI-A-HB***

***\$10***

### MPI Horn Button

- Fits most MPI 6 bolt steering wheels



**MPI-A-SH**

**\$60**

Carbon Fiber Switch Holder

- Avoid making holes in spoke for use with radio push-to-talk button, kill switch, track bar adjuster
- Snaps onto the steering wheel spoke



**MPI-A-SB**

**\$8**

Steel Brush

- Steel brush to maintain steering wheel suede
- Preserves texture and removes dirt



**MPI-A-SWC**

**\$30**

Steering Wheel Cover

- Protects steering wheel during transportation at the track and the race shop



***MPI-A-CHC***

***\$20***

Center Hole Cover

- Made from aircraft aluminum
- Fits 6 bolt hole pattern MPI Steering Wheels
- Made in the USA
- Anodized black with orange MPI logo



***MPI-A-SWH***

***\$15***

Steering Wheel Hook

- Steering wheel hook to hank your steering wheel inside the car
- Made in the USA, from aircraft aluminum
- Anodized black with MPI logo



***MPI-A-3/6BLT***

***\$30***

Steering Wheel Adapter for MPI 6 Bolt Steering Wheel

- 3 to 6 bolt adapter
- Fits all 6 bolt hole pattern MPI steering wheels
- Made in the USA, from aircraft aluminum



**MPI-A-SWS**

**\$175**

### Steering Wheel Stand

- Steering wheel stand to mount/showcase a MPI steering wheel
- Makes a great sponsor gift
- Made from aircraft aluminum
- Made in the USA



**MPI-A-TW**

**\$99**

### Transportation Wheel

- Steel Frame with a diameter of 18 inches
- Perfect to move your car in the pits
- Available in anti-slip black and glossy orange



**MPI Hat/Shirt**

**\$20**

### Hat or T-Shirt

- Hat: Curve bill shape, snap back, MPI 3D logo embroidered
- Shirt: Grey MPI T-Shirt, 80% Cotton, 20% polyester



***MPI-RS-LG***

***\$45***

Logitech G27 & G25 Steering Wheel Adapter

- Made from aircraft aluminum
- Fits all MPI Steering Wheels
- Recommended for iRacing
- Increase precision and feeling
- Bolts for 6 & 3 holes pattern
- Made in the USA



***MPI-RS-PS***

***\$25***

Racing Simulator Paddle Shifters

- Made from aircraft aluminum
- Fits all G27 & G25
- Recommended for iRacing
- Made in the USA

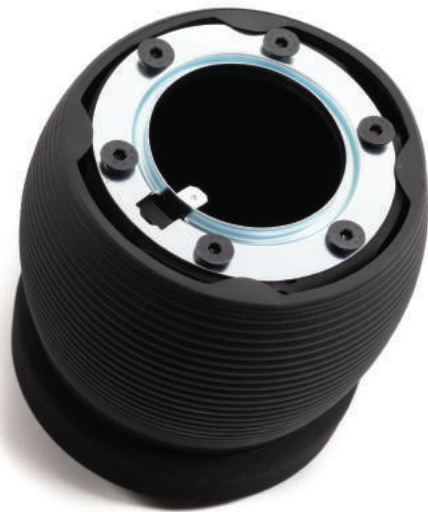


# MPI-H

*Steering Wheel Collapsible Hub Adapter*

**\$79**

- 6 bolt steering wheel collapsible hub adapter for road car
- Absorbs outstanding impact
- Increased safety level in case of collision
- Fits 6 bolts hole pattern MPI steering wheels
- Includes 6 cap screw
- Includes hub adapter cover
- Includes hub adapter washer for horn button



# MPI HUB CHART

<i>Model</i>	<i>Year</i>	<i>MPI Part #</i>
<b>AUDI</b>		
<i>80</i>	<i>1979 - 2007 - 1986</i>	<i>MPI-H-V02-10</i>
<i>90</i>	<i>&gt;09 - 1987</i>	<i>MPI-H-V02-10</i>
<i>Coupe</i>	<i>&gt;1989</i>	<i>MPI-H-V02-10</i>
<i>Fox</i>	<i>1979&lt;</i>	<i>MPI-H-V02-10</i>
<i>A3</i>		<i>MPI-H-V02-17</i>
<i>A4</i>	<i>1998&gt;</i>	<i>MPI-H-V02-17</i>
<b>BMW</b>		
<i>Serie 3</i>	<i>&gt;1983 - 1990&lt;</i>	<i>MPI-H-V03-01</i>
<i>Serie 5</i>	<i>1986&gt;</i>	<i>MPI-H-V03-01</i>
<i>Serie 6</i>	<i>1987&gt;</i>	<i>MPI-H-V03-01</i>
<i>Serie 7</i>	<i>1987&gt;</i>	<i>MPI-H-V03-01</i>
<i>850i</i>		<i>MPI-H-V03-02</i>
<i>Serie 3</i>	<i>1991&gt;</i>	<i>MPI-H-V03-02</i>
<i>1502</i>		<i>MPI-H-V03-03</i>
<i>1602</i>		<i>MPI-H-V03-03</i>
<i>1802</i>		<i>MPI-H-V03-03</i>
<i>2002</i>		<i>MPI-H-V03-03</i>

<i>Model</i>	<i>Year</i>	<i>MPI Part #</i>
<b>FORD</b>		
<i>Laser</i>		<i>MPI-H-V04-01</i>
<b>KIA</b>		
<i>Capital</i>		<i>MPI-H-V04-01</i>
<i>Concord</i>		<i>MPI-H-V04-01</i>
<i>Pride</i>		<i>MPI-H-V04-01</i>
<i>Sportage</i>		<i>MPI-H-V04-01</i>
<b>MAZDA</b>		
<i>121</i>	<i>&gt;1995</i>	<i>MPI-H-V04-01</i>
<i>323</i>	<i>1981&gt;</i>	<i>MPI-H-V04-01</i>
<i>626 - MX6 - EUNOS 500</i>	<i>&gt;1983 - 1991&lt;</i>	<i>MPI-H-V04-01</i>
<i>929/RX4 - COSMO</i>	<i>1983&gt;</i>	<i>MPI-H-V04-01</i>
<i>MX3</i>		<i>MPI-H-V04-01</i>
<i>MX5 - MIATA</i>		<i>MPI-H-V04-01</i>
<i>RX7</i>	<i>&gt;1981 - 1985&lt;</i>	<i>MPI-H-V04-01</i>



<i>Model</i>	<i>Year</i>	<i>MPI Part #</i>
<b><i>PORSCHE</i></b>		
<i>911</i>	<i>&gt; 07 - 1974</i>	<i>MPI-H-V01-03</i>
<i>911</i>	<i>08 - 1974&gt;</i>	<i>MPI-H-V01-01</i>
<i>911 Carrera 2 - 4 - RS</i>		<i>MPI-H-V01-02</i>
<i>912 S</i>		<i>MPI-H-V01-01</i>
<i>912 T</i>		<i>MPI-H-V01-03</i>
<i>914</i>		<i>MPI-H-V01-03</i>
<i>914/4</i>	<i>1972&gt;</i>	<i>MPI-H-V02-02</i>
<i>916</i>		<i>MPI-H-V01-03</i>
<i>924</i>		<i>MPI-H-V02-10</i>
<i>928</i>	<i>&gt;1988</i>	<i>MPI-H-V01-01</i>
<i>944</i>	<i>&gt;1984</i>	<i>MPI-H-V02-10</i>
<i>944</i>	<i>1985&gt;</i>	<i>MPI-H-V01-02</i>
<i>1600</i>		<i>MPI-H-V01-03</i>
<b><i>SEAT</i></b>		
<i>Cordoba</i>	<i>2003&gt;</i>	<i>MPI-H-V02-17</i>
<i>Ibiza</i>	<i>2001&gt;</i>	<i>MPI-H-V02-17</i>
<i>Leon</i>		<i>MPI-H-V02-17</i>
<i>Marbella</i>	<i>1997&gt;</i>	<i>MPI-H-V02-10</i>

<i>Model</i>	<i>Year</i>	<i>MPI Part #</i>
<b><i>SEAT</i></b>		
<i>Toledo</i>	<i>1999&gt;</i>	<i>MPI-H-V02-17</i>
<i>Toledo</i>		<i>MPI-H-V02-10</i>
<b><i>SKODA</i></b>		
<i>Octavia</i>		<i>MPI-H-V02-17</i>
<b><i>VOLKSWAGEN</i></b>		
<i>1303</i>	<i>1974&gt;</i>	<i>MPI-H-V02-10</i>
<i>Beetle</i>		<i>MPI-H-V02-17</i>
<i>Bora</i>		<i>MPI-H-V02-17</i>
<i>Corrado</i>	<i>&gt;1988</i>	<i>MPI-H-V02-10</i>
<i>Eos</i>		<i>MPI-H-V02-17</i>
<i>Golf</i>	<i>&gt;1988</i>	<i>MPI-H-V02-10</i>
<i>Golf IV</i>		<i>MPI-H-V02-17</i>
<i>Golf V</i>		<i>MPI-H-V02-17</i>
<i>Golf VI</i>		<i>MPI-H-V02-17</i>
<i>Jetta</i>	<i>&gt;1988</i>	<i>MPI-H-V02-10</i>
<i>Passat</i>	<i>&gt;1978 - 1988&lt;</i>	<i>MPI-H-V02-10</i>
<i>Rabbit</i>		<i>MPI-H-V02-10</i>
<i>Scirocco</i>	<i>&gt;1988</i>	<i>MPI-H-V02-10</i>

# MPI PROJECT U

PROJECT U CUSTOM STEERING WHEEL OPTIONS

**OPTION 1**



**OPTION 3**



**OPTION 4**



**OPTION 5**



**OPTION 2**



# MPI PROJECT U

## PROJECT U CUSTOM STEERING WHEEL PRICING

	<i>1 Embroidery + Stitching</i>	<i>Suede Color</i>	<i>Laser</i>	<i>Spoke Color</i>	<i>PRICE</i>
<b>OPTION 1</b>	X				\$129
<b>OPTION 2</b>	X	X	X		\$199
<b>OPTION 3</b>	X	X	X	X	\$299
<b>OPTION 4</b>	<i>1 Embroidery on Center Pad only</i>				\$100
<b>OPTION 5</b>	<i>1 Logo Laser on Aluminum Spoke only</i>				\$50

## ORDER PROCESS

**STEP 1** Client to choose base steering wheel model and PU option - specific pantone colors are recommended + any custom artwork in: .eps, .pdf, or .ai format.

**STEP 2** MPI to present a rendering based on info received

**STEP 3** Client to approve rendering in writing. At rendering approval and once MPI has confirmed the receipt of all artwork in the required format, MPI will collect a 50% deposit and move to production.

 ETA delivery 6-8 weeks from Step 2 of the order process

 Rush production (2-3 weeks) available for \$250

## STEERING WHEELS

MPI-MP-14/15/16 OE	\$399	MPI-KP-12/13	\$199
MPI-MP-14/15/16 O	\$399	MPI-DO-14-C/SB/HG/HG-B	\$219
MPI-DP-13	\$399	MPI-DO-H60/HG	\$219
MPI-MP2-14/15	\$499	MPI-F-14-C/SB/HG/HG-B	\$199
MPI-LM-15-A	\$299	MPI-F-14-2B/HG	\$299
MPI-LM-15	\$299	MPI-F-13-C/HG	\$199
MPI-BL-14-A	\$199	MPI-F-13-CUT	\$229
MPI-BL-14-PA	\$139	MPI-GT-13-C/HG	\$219
MPI-KQS-11	\$189	MPI-GT-11	\$199
MPI-KQR-11	\$159	MPI-GT-11-CUT	\$219
MPI-DM2-15	\$249	MPI-DRG-12/13	\$249
MPI-D2-15	\$249		
MPI-DMR-15/16/17	\$129		
MPI-DR-15/16/17	\$129		
MPI-KD-13/14	\$199		
MPI-KMD-15	\$189		

## MPI PRICING

### ACCESSORIES

MPI-A-CHC	\$20	MPI-A-SH	\$60
MPI-A-CP-D	\$20	MPI-RS-LG	\$45
MPI-A-CP-D2	\$22	MPI-A-PS	\$25
MPI-A-CP-DM2	\$22	MPI-H	\$79
MPI-A-CP-BLDO	\$40	MPI-HB-SXS-1	\$49
MPI-A-CP-MPLM	\$40	MPI-A-3/6BLT	\$30
MPI-A-CP-F	\$29	MPI-A-SB	\$8
MPI-A-HB	\$10	MPI-A-SWC	\$30
MPI-A-SBH	\$25	MPI-A-SWH	\$15
MPI-A-DBH	\$35	MPI-A-SWS	\$175



#MPIFAMILY



# FOREVER OUR CHAMPIONS





**#FOREVER41**  
**#BCFOREVER**

Photos by DB3 Imaging & TeeJay Crawford



**Max Papis Innovations**  
**224 Rolling Hill Road - Suite 9a**  
 **Mooresville, NC 28117**  
**mpi@maxpapis.com**  
**+1-704-208-4344**  
**www.maxpapisinc.com**



**@mpi\_innovations**



**@mpi.innovations**



**facebook.com/mpi.innovations**